

Converting Colors

Hex(B4838D)

Have a look what the booklet for
Hex(B4838D) contains.

Hex(B4838D)	3
<i>Conversions</i>	4
<i>Details</i>	6
<i>Harmonies</i>	11
<i>Previews</i>	23
<i>Color Blindness Simulation</i>	26
<i>CSS Examples</i>	29

Color

Hex(B4838D)

Conversions

Conversions Part 1

Format	Color
Hex	B4838D
RGB	180, 131, 141
RGB Percent	71%, 51%, 55%
CMY	0.2941, 0.4863, 0.4471
CMYK	0.00, 0.27, 0.22, 0.29
HSL	348°, 25%, 61%
HSV	348°, 27%, 71%
XYZ	31.7464, 27.8590, 28.9034
YIQ	146.7910, 25.9940, 13.4980

Conversions

Conversions Part 2

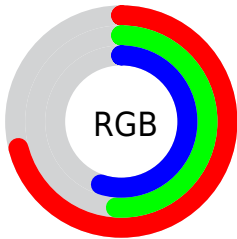
Format	Color
RYB	180, 131, 141
Decimal	11830157
CIELab	59.76, 20.36, 2.09
CIElCh	60, 20.464, 5.851
Yxy	27.8590, 0.3587, 0.3148
Android (android.graphics.Color)	4290020237 (0xFFB4838D)
YUV	146.7910, -2.8550, 29.1243
Hunter-Lab	52.7816, 14.9941, 4.4797

Details

The Hex color **B4838D** is a light color, and the websafe version is hex **CC9999**. A complement of this color would be **83B4AA**, and the grayscale version is **939393**.

A 20% lighter version of the original color is **EDB8C3**, and **7E515B** is the 20% darker color. If you saturate the color by 10%, you get **B4717F**, and if you desaturate by 10%, it is **B4959B**.

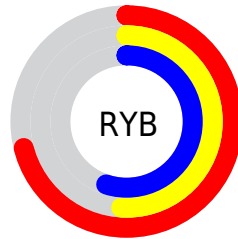
Distribution



Red (71%)

Green (51%)

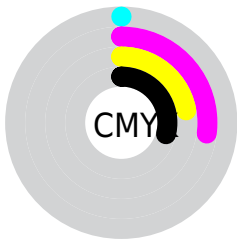
Blue (55%)



Red (71%)

Yellow (51%)

Blue (55%)

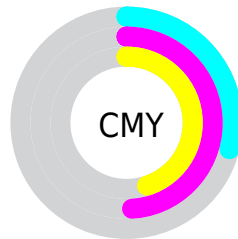


Cyan (0%)

Magenta (27%)

Yellow (22%)

Black (29%)



Cyan (29%)

Magenta (49%)

Yellow (45%)

Brightness & Saturation Gradients

These gradients show how the Hex color B4838D changes by changing the brightness by 10 percent. The first figure shows a shift by +10% for each color and the second figure -10%.

Similar to the brightness gradients but the following saturation gradients show a change of the Hex color B4838D by changing the saturation by 10% instead.

 B4838D

 B4838D

FFFFFF

 996A73

 EDB8C3

 7E515B

 FFD4DE

 643A44

 FFF1FB

 4C232D

 340E19

 210001

 000000

 B4838D

 B4838D

 B4717F

 B4959B

 B45F70

 B4A7AA

 B44D62

 B4B9B8

 B43B54

 B4CBC6

 B42945

 B4DDD5

 B41737

 B4EFE3

 B40529

 B4FFF1

 B40025

 B4FFFF

Harmonies

Analogous

The Analogous color harmony consists of three colors that are next to each other on the color wheel.



AA859F



B4838D



B4857C

Triad

The Triadic color harmony groups three colors that are evenly spaced from another and form a triangle on the color wheel.



B4838D



869572



6896B0

Complementary

The Complementary color scheme is a pair of colors which are on the opposite of each other on the color wheel.



B4838D



83B4AA

Split Complementary

Split-complementary colors differ from the complementary color scheme. The scheme consists of three colors, the original color and two neighbors of the complement color.



5D99A4



B4838D



729981

Square

The Square scheme is like the rectangle color scheme, but the four colors are evenly spaced on the color wheel.



B4838D



9A906C



619A93



7F90B3

Rectangle

The Rectangle color scheme consists of four colors that form a rectangle on the color wheel.



B4838D



AE8873



619A93



6397AD

Sweetspot

The Sweet Spot groups the original color and five complimentary colors.



B4838D



EBD8DC



A983B4



756A6C



F5F5F5



757575

Same Dimension

The Same Dimension uses a secret algorithm to generate beautiful new colors.



B4838D



EB9DAD



B49183



595052



99001F



1A0005

Inverse Universe

The Inverse Universe completely reimagines the original color for something new.



B4838D



EB9DAD



83A6B4



595052



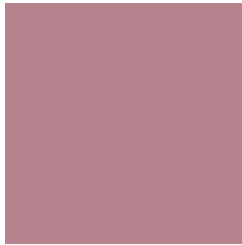
99001F



1A0005

Previews

White Background



This preview shows how the Hex color B4838D looks on a white background.

Color Contrast Check

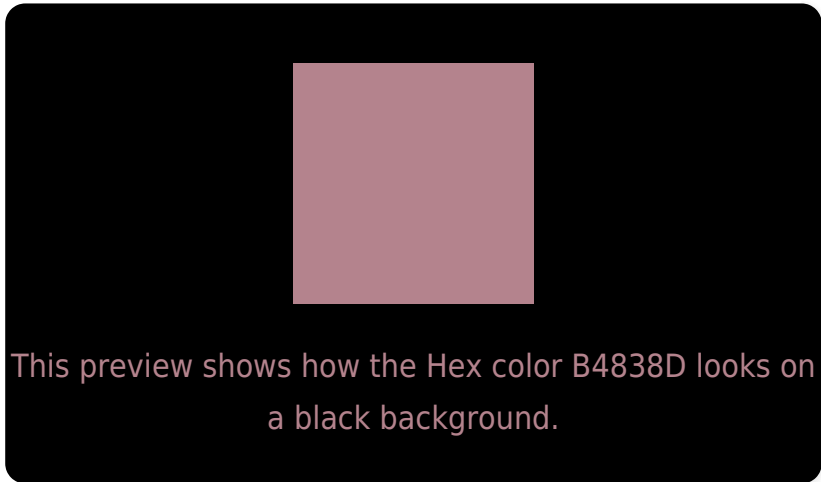
Large Text (above 18pt) WCAG AA ✓ Pass

Any Text WCAG AA × Fail

Large Text (above 18pt) WCAG AAA × Fail

Any Text WCAG AAA × Fail

Black Background



Color Contrast Check

Large Text (above 18pt) WCAG AA ✓ Pass

Any Text WCAG AA ✓ Pass

Large Text (above 18pt) WCAG AAA ✓ Pass

Any Text WCAG AAA × Fail

If you want to check with other color combinations, try the [Color Contrast Checker](#).

Hex B4838D Background



This preview shows how black text looks on a background with the Hex color B4838D.

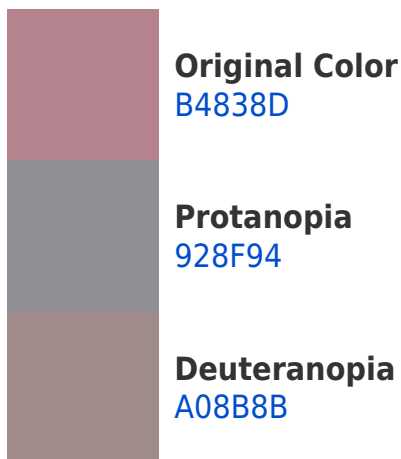



This preview shows how white text looks on a background with the Hex color B4838D.

Color Blindness Simulation

Color vision deficiency is a very complex topic, and I could not describe the different causes any better than Wikipedia does, so if you want to learn more, you should check out their [article about color blindness](#).

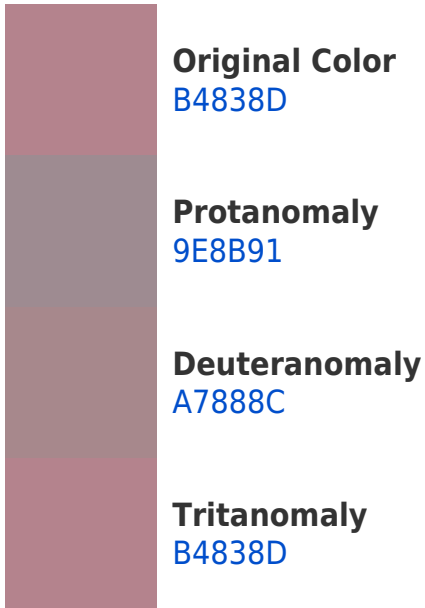
Dichromacy





Tritanopia
B4838D

Trichromacy



Monochromacy



CSS Examples

Text

The CSS property to change the color of the text to Hex B4838D is called "color". The color property can be set on classes, ids or directly on the HTML element.

This example shows how text in the color #B4838D looks like.

```
.text, #text, p{  
    color:#B4838D  
}
```

If you want to add a text shadow in that color use the text-shadow property, you can generate a text shadow directly with our [CSS Text Shadow Generator](#).

Here you see how black text with a 4 pixel #B4838D colored shadow looks like.

```
.shadow{ text-shadow: 4px 4px 2px #B4838D
}
```

Border

The CSS property to change the border of an element to Hex B4838D is called "border". The border property can be set on classes, ids or directly on the HTML element.

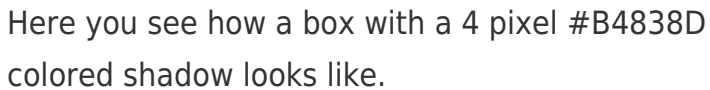
This example shows the color as border, it can be applied via the CSS property "border" or "border-color".

```
.border, #border, table{ border:4px solid
#B4838D }
```

If only the border color should be changed use the property `border-color`.

```
.border{ border-color:#B4838D }
```

If you want to add a box shadow in that color use:



Here you see how a box with a 4 pixel #B4838D colored shadow looks like.

```
.boxshadow{ -moz-box-shadow:4px 4px 4px  
4px #B4838D; -webkit-box-shadow:4px 4px  
4px 4px #B4838D; box-shadow:4px 4px 4px  
4px #B4838D }
```

Background

The CSS property to change the background color of an element to Hex B4838D is called "background". The background property can be set on classes, ids or directly on the HTML element.

```
.background, #background, body{  
background:#B4838D }
```

If only the background color should be changed can be used:

```
.background{ background-color:#B4838D }
```

This example shows the color as background, it is applied via the CSS property "background".

To optimize and compress your CSS code, you can use our [online CSS compressor and optimizer](#) based on csstidy. If you want to create a linear or radial gradient as background or border, check our [CSS Gradient Generator](#).

Hey! You found this booklet interesting? Support Converting Colors with the new Membership Option!

The pro membership hides all ads, plus gives you double the colors in the color bucket, and more awesome pro features!

[Learn more, Memberships starting at \\$2.50/m!](#)

**Follow me
on Twitter!**

@ConvertingColor