

Converting Colors

Hex(B48782)

Have a look what the booklet for
Hex(B48782) contains.

Hex(B48782)	3
<i>Conversions</i>	4
<i>Details</i>	6
<i>Harmonies</i>	11
<i>Previews</i>	23
<i>Color Blindness Simulation</i>	26
<i>CSS Examples</i>	29

Color

Hex(B48782)

Conversions

Conversions Part 1

Format	Color
Hex	B48782
RGB	180, 135, 130
RGB Percent	71%, 53%, 51%
CMY	0.2941, 0.4706, 0.4902
CMYK	0.00, 0.25, 0.28, 0.29
HSL	6°, 25%, 61%
HSV	6°, 28%, 71%
XYZ	31.5156, 28.6430, 24.9867
YIQ	147.8850, 28.4250, 7.9850

Conversions

Conversions Part 2

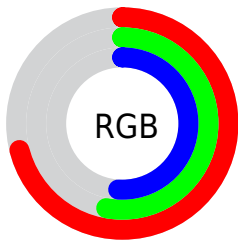
Format	Color
RYB	180, 136, 130
Decimal	11831170
CIELab	60.47, 16.48, 9.39
CIELCh	60, 18.968, 29.674
Yxy	28.6430, 0.3701, 0.3364
Android (android.graphics.Color)	4290021250 (0xFFB48782)
YUV	147.8850, -8.8173, 28.1649
Hunter-Lab	53.5191, 11.4543, 9.7824

Details

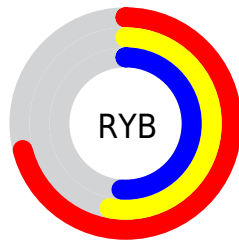
The Hex color **B48782** is a light color, and the websafe version is hex **CC9999**. A complement of this color would be **82AFB4**, and the grayscale version is **949494**.

A 20% lighter version of the original color is **EDBC77**, and **7E5551** is the 20% darker color. If you saturate the color by 10%, you get **B47770**, and if you desaturate by 10%, it is **B49794**.

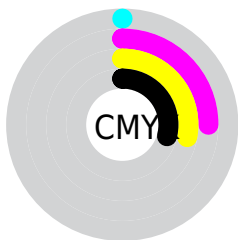
Distribution



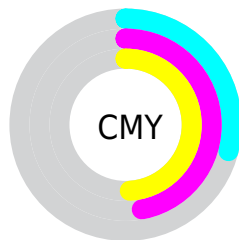
- Red (71%)
- Green (53%)
- Blue (51%)



- Red (71%)
- Yellow (53%)
- Blue (51%)



- Cyan (0%)
- Magenta (25%)
- Yellow (28%)
- Black (29%)



- Cyan (29%)
- Magenta (47%)
- Yellow (49%)

Brightness & Saturation Gradients

These gradients show how the Hex color B48782 changes by changing the brightness by 10 percent. The first figure shows a shift by +10% for each color and the second figure -10%.

Similar to the brightness gradients but the following saturation gradients show a change of the Hex color B48782 by changing the saturation by 10% instead.

 B48782

 B48782

FFFFFF

 996E69

 EDBC87

 7E5551

 FFD8D2

 643E3A

 FFF5EF

 4B2724

 33120F

 1F0000

 000000

 B48782

 B48782

 B47770

 B49794

 B4675E

 B4A7A6

 B4564C

 B4B8B8

 B4463A

 B4C8CA

 B43628

 B4D8DC

 B42616

 B4E8EE

 B41604

 B4F8FF

 B41200

 B4FFFF

Harmonies

Analogous

The Analogous color harmony consists of three colors that are next to each other on the color wheel.



B28693



B48782



AD8B76

Triad

The Triadic color harmony groups three colors that are evenly spaced from another and form a triangle on the color wheel.



B48782



799A80



7E93B3

Complementary

The Complementary color scheme is a pair of colors which are on the opposite of each other on the color wheel.



B48782



82AFB4

Split Complementary

Split-complementary colors differ from the complementary color scheme. The scheme consists of three colors, the original color and two neighbors of the complement color.



6B98AE



B48782



6A9B91

Square

The Square scheme is like the rectangle color scheme, but the four colors are evenly spaced on the color wheel.



B48782



8D9675



639BA2



948EAF

Rectangle

The Rectangle color scheme consists of four colors that form a rectangle on the color wheel.



B48782



A48F71



639BA2



7795B2

Sweetspot

The Sweet Spot groups the original color and five complimentary colors.



B48782



EBDAD8



B482AF



756B6A



F5F5F5



757575

Same Dimension

The Same Dimension uses a secret algorithm to generate beautiful new colors.



B48782



EBA59D



B4A082



595150



990F00



1A0300

Inverse Universe

The Inverse Universe completely reimagines the original color for something new.



82AFB4



9DE3EB



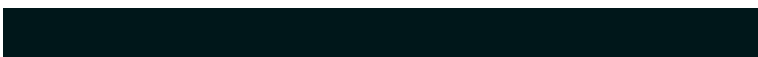
8296B4



505859



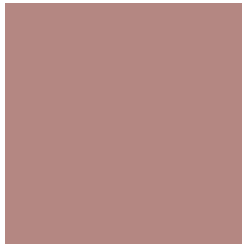
008A99



00171A

Previews

White Background



This preview shows how the Hex color B48782 looks on a white background.

Color Contrast Check

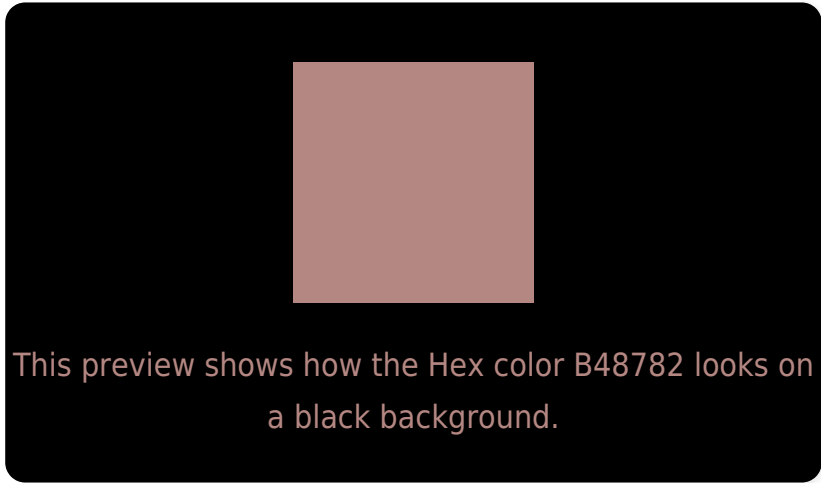
Large Text (above 18pt) WCAG AA ✓ Pass

Any Text WCAG AA ✗ Fail

Large Text (above 18pt) WCAG AAA ✗ Fail

Any Text WCAG AAA ✗ Fail

Black Background



Color Contrast Check

Large Text (above 18pt) WCAG AA ✓ Pass

Any Text WCAG AA ✓ Pass

Large Text (above 18pt) WCAG AAA ✓ Pass

Any Text WCAG AAA × Fail

If you want to check with other color combinations, try the [Color Contrast Checker](#).

Hex B48782 Background



This preview shows how black text looks on a background with the Hex color B48782.

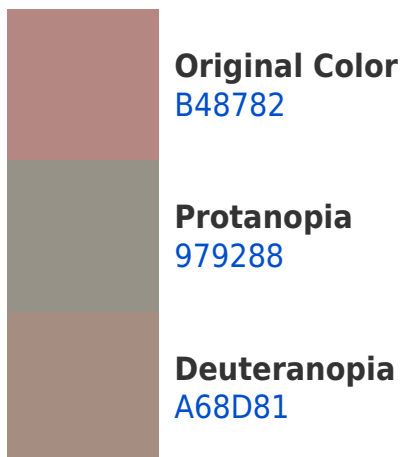


This preview shows how white text looks on a background with the Hex color B48782.

Color Blindness Simulation

Color vision deficiency is a very complex topic, and I could not describe the different causes any better than Wikipedia does, so if you want to learn more, you should check out their [article about color blindness](#).

Dichromacy





Tritanopia
B5858F

Trichromacy



Original Color
B48782

Protanomaly
A28E86

Deuteranomaly
AB8B81

Tritanomaly
B5868A

Monochromacy



Original Color
B48782

Achromatopsia
949494

Achromatomaly
A08F8D

CSS Examples

Text

The CSS property to change the color of the text to Hex B48782 is called "color". The color property can be set on classes, ids or directly on the HTML element.

This example shows how text in the color #B48782 looks like.

```
.text, #text, p{  
    color:#B48782  
}
```

If you want to add a text shadow in that color use the text-shadow property, you can generate a text shadow directly with our [CSS Text Shadow Generator](#).

Here you see how black text with a 4 pixel #B48782 colored shadow looks like.

```
.shadow{ text-shadow: 4px 4px 2px #B48782
}
```

Border

The CSS property to change the border of an element to Hex B48782 is called "border". The border property can be set on classes, ids or directly on the HTML element.

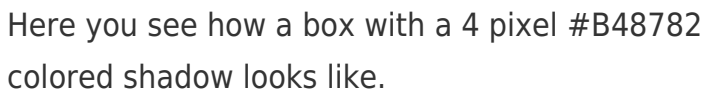
This example shows the color as border, it can be applied via the CSS property "border" or "border-color".

```
.border, #border, table{ border:4px solid
#B48782 }
```

If only the border color should be changed use the property `border-color`.

```
.border{ border-color:#B48782 }
```

If you want to add a box shadow in that color use:



Here you see how a box with a 4 pixel #B48782 colored shadow looks like.

```
.boxshadow{ -moz-box-shadow:4px 4px 4px  
4px #B48782; -webkit-box-shadow:4px 4px  
4px 4px #B48782; box-shadow:4px 4px 4px  
4px #B48782 }
```

Background

The CSS property to change the background color of an element to Hex B48782 is called "background". The background property can be set on classes, ids or directly on the HTML element.

```
.background, #background, body{  
background:#B48782 }
```

If only the background color should be changed can be used:

```
.background{ background-color:#B48782 }
```

This example shows the color as background, it is applied via the CSS property "background".

To optimize and compress your CSS code, you can use our [online CSS compressor and optimizer](#) based on csstidy. If you want to create a linear or radial gradient as background or border, check our [CSS Gradient Generator](#).

Hey! You found this booklet interesting? Support Converting Colors with the new Membership Option!

The pro membership hides all ads, plus gives you double the colors in the color bucket, and more awesome pro features!

[Learn more, Memberships starting at \\$2.50/m!](#)

**Follow me
on Twitter!**

@ConvertingColor