

# Converting Colors

Hex(B4878A)

Have a look what the booklet for  
Hex(B4878A) contains.

<b>Hex(B4878A)</b> .....	3
<i><b>Conversions</b></i> .....	4
<i><b>Details</b></i> .....	6
<i><b>Harmonies</b></i> .....	11
<i><b>Previews</b></i> .....	23
<i><b>Color Blindness Simulation</b></i> .....	26
<i><b>CSS Examples</b></i> .....	29

# **Color**

**Hex(B4878A)**

# Conversions

## Conversions Part 1

Format	Color
Hex	B4878A
RGB	180, 135, 138
RGB Percent	71%, 53%, 54%
CMY	0.2941, 0.4706, 0.4588
CMYK	0.00, 0.25, 0.23, 0.29
HSL	356°, 23%, 62%
HSV	356°, 25%, 71%
XYZ	32.0738, 28.8662, 27.9260
YIQ	148.7970, 25.8570, 10.4730

# Conversions

## Conversions Part 2

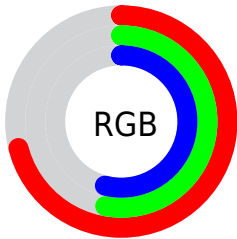
Format	Color
<a href="#">RYB</a>	<a href="#">180, 135, 138</a>
Decimal	<a href="#">11831178</a>
CIELab	<a href="#">60.66, 17.66, 5.11</a>
CIELCh	<a href="#">61, 18.381, 16.132</a>
Yxy	<a href="#">28.8662, 0.3609, 0.3248</a>
Android (android.graphics.Color)	<a href="#">4290021258 (0xFFB4878A)</a>
YUV	<a href="#">148.7970, -5.3229, 27.3650</a>
Hunter-Lab	<a href="#">53.7273, 12.5371, 6.7917</a>

# Details

The Hex color **B4878A** is a light color, and the websafe version is hex **CC9999**. A complement of this color would be **87B4B1**, and the grayscale version is **959595**.

A 20% lighter version of the original color is **EDBCBF**, and **7E5558** is the 20% darker color. If you saturate the color by 10%, you get **B47579**, and if you desaturate by 10%, it is **B4999B**.

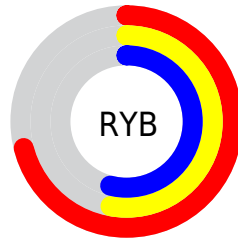
# Distribution



Red (71%)

Green (53%)

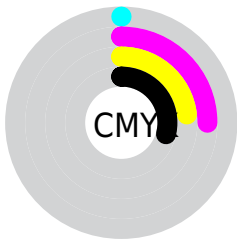
Blue (54%)



Red (71%)

Yellow (53%)

Blue (54%)

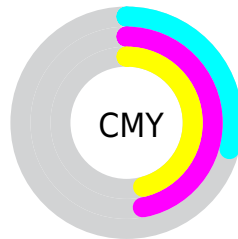


Cyan (0%)

Magenta (25%)

Yellow (23%)

Black (29%)



Cyan (29%)

Magenta (47%)

Yellow (46%)

# Brightness & Saturation Gradients

These gradients show how the Hex color B4878A changes by changing the brightness by 10 percent. The first figure shows a shift by +10% for each color and the second figure -10%.

Similar to the brightness gradients but the following saturation gradients show a change of the Hex color B4878A by changing the saturation by 10% instead.



 B4878A

 B4878A

FFFFFF

 996E71

 EDBCBF

 7E5558

 FFD8DB

 653D41

 FFF5F8

 4C272B

 341217

 210000

 000000

 B4878A

 B4878A

 B47579

 B4999B

 B46368

 B4ABAC

 B45158

 B4BDBC

 B43F47

 B4CFCD

 B42D36

 B4E1DE

 B41B25

 B4F3EF

 B40914

 B4FFFF

 B4000C

# Harmonies

## Analogous

The Analogous color harmony consists of three colors that are next to each other on the color wheel.



AE889B



B4878A



B18A7C

# Triad

The Triadic color harmony groups three colors that are evenly spaced from another and form a triangle on the color wheel.



B4878A



83987B



7696B1

# Complementary

The Complementary color scheme is a pair of colors which are on the opposite of each other on the color wheel.



B4878A



87B4B1

# Split Complementary

Split-complementary colors differ from the complementary color scheme. The scheme consists of three colors, the original color and two neighbors of the complement color.



689AA9



B4878A



729B8A

# Square

The Square scheme is like the rectangle color scheme, but the four colors are evenly spaced on the color wheel.



B4878A



969473



679C9B



8B91B1

# Rectangle

The Rectangle color scheme consists of four colors that form a rectangle on the color wheel.



B4878A



AA8D75



679C9B



7098AF



# Sweetspot

The Sweet Spot groups the original color and five complimentary colors.



B4878A



EBD8D9



B187B4



756A6A



F5F5F5



757575



# Same Dimension

The Same Dimension uses a secret algorithm to generate beautiful new colors.



B4878A



EBA4A9



B49B87



595051



99000A



1A0002



# Inverse Universe

The Inverse Universe completely reimagines the original color for something new.



B4878A



EBA4A9



87A1B4



595051



99000A

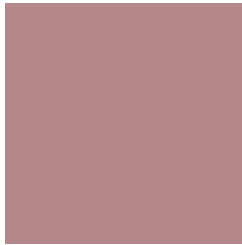


1A0002



# Previews

## White Background



This preview shows how the Hex color B4878A looks on a white background.

## Color Contrast Check

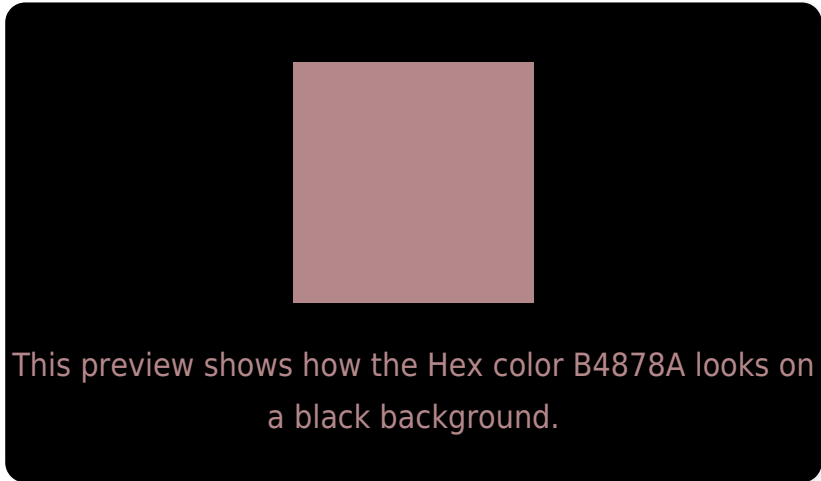
Large Text (above 18pt) WCAG AA ✓ Pass

Any Text WCAG AA × Fail

Large Text (above 18pt) WCAG AAA × Fail

Any Text WCAG AAA × Fail

# Black Background



## Color Contrast Check

Large Text (above 18pt) WCAG AA ✓ Pass

Any Text WCAG AA ✓ Pass

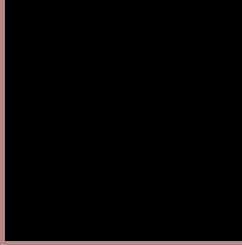
Large Text (above 18pt) WCAG AAA ✓ Pass

Any Text WCAG AAA × Fail

If you want to check with other color combinations, try the [Color Contrast Checker](#).



## Hex B4878A Background



This preview shows how black text looks on a background with the Hex color B4878A.



This preview shows how white text looks on a background with the Hex color B4878A.

# Color Blindness Simulation

Color vision deficiency is a very complex topic, and I could not describe the different causes any better than Wikipedia does, so if you want to learn more, you should check out their [article about color blindness](#).

## Dichromacy



**Original Color**  
B4878A

**Protanopia**  
969290

**Deuteranopia**  
A48E89



**Tritanopia**  
B58690

# Trichromacy



**Original Color**  
B4878A

**Protanomaly**  
A18E8E

**Deuteranomaly**  
AA8B89

**Tritanomaly**  
B5868E

# Monochromacy



**Original Color**  
B4878A

**Achromatopsia**  
959595

**Achromatomaly**  
A09091

# CSS Examples

## Text

The CSS property to change the color of the text to Hex B4878A is called "color". The color property can be set on classes, ids or directly on the HTML element.

This example shows how text in the color #B4878A looks like.

```
.text, #text, p{  
    color:#B4878A  
}
```

If you want to add a text shadow in that color use the text-shadow property, you can generate a text shadow directly with our [CSS Text Shadow Generator](#).

Here you see how black text with a 4 pixel #B4878A colored shadow looks like.

```
.shadow{ text-shadow: 4px 4px 2px #B4878A
}
```

## Border

The CSS property to change the border of an element to Hex B4878A is called "border". The border property can be set on classes, ids or directly on the HTML element.

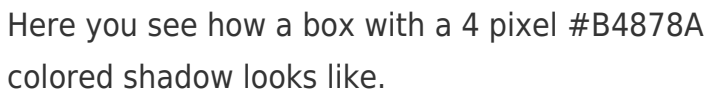
This example shows the color as border, it can be applied via the CSS property "border" or "border-color".

```
.border, #border, table{ border:4px solid
#B4878A }
```

If only the border color should be changed use the property `border-color`.

```
.border{ border-color:#B4878A }
```

If you want to add a box shadow in that color use:



Here you see how a box with a 4 pixel #B4878A colored shadow looks like.

```
.boxshadow{ -moz-box-shadow:4px 4px 4px  
4px #B4878A; -webkit-box-shadow:4px 4px  
4px 4px #B4878A; box-shadow:4px 4px 4px  
4px #B4878A }
```

# Background

The CSS property to change the background color of an element to Hex B4878A is called "background". The background property can be set on classes, ids or directly on the HTML element.

```
.background, #background, body{  
background:#B4878A }
```

If only the background color should be changed can be used:

```
.background{ background-color:#B4878A }
```

This example shows the color as background, it is applied via the CSS property "background".

To optimize and compress your CSS code, you can use our [online CSS compressor and optimizer](#) based on csstidy. If you want to create a linear or radial gradient as background or border, check our [CSS Gradient Generator](#).



Hey! You found this booklet interesting? Support Converting Colors with the new Membership Option!

The pro membership hides all ads, plus gives you double the colors in the color bucket, and more awesome pro features!

**[Learn more, Memberships starting at \\$2.50/m!](#)**

**Follow me  
on Twitter!**

@ConvertingColor