

# Converting Colors

Hex(B48B5F)

Have a look what the booklet for  
Hex(B48B5F) contains.

<b>Hex(B48B5F)</b> .....	3
<i><b>Conversions</b></i> .....	4
<i><b>Details</b></i> .....	6
<i><b>Harmonies</b></i> .....	11
<i><b>Previews</b></i> .....	23
<i><b>Color Blindness Simulation</b></i> .....	26
<i><b>CSS Examples</b></i> .....	29

**Color**

**Hex(B48B5F)**

# Conversions

## Conversions Part 1

<b>Format</b>	<b>Color</b>
Hex	<b>B48B5F</b>
RGB	<b>180, 139, 95</b>
RGB Percent	<b>71%, 55%, 37%</b>
CMY	<b>0.2941, 0.4549, 0.6275</b>
CMYK	<b>0.00, 0.23, 0.47, 0.29</b>
HSL	<b>31°, 36%, 54%</b>
HSV	<b>31°, 47%, 71%</b>
XYZ	<b>30.1206, 28.9948, 14.8355</b>
YIQ	<b>146.2430, 38.5600, -4.9920</b>

# Conversions

## Conversions Part 2

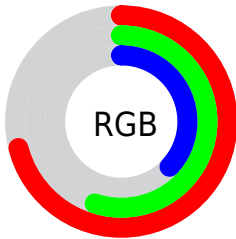
<b>Format</b>	<b>Color</b>
<b>RYB</b>	174, 180, 95
Decimal	11832159
CIELab	60.78, 9.95, 29.46
CIElCh	61, 31.095, 71.333
Yxy	28.9948, 0.4073, 0.3921
Android (android.graphics.Color)	4290022239 (0xFFB48B5F)
YUV	146.2430, -25.2628, 29.6049
Hunter-Lab	53.8468, 5.6166, 21.3576

# Details

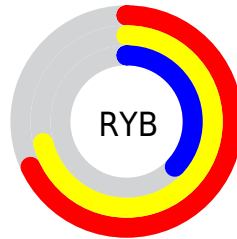
The Hex color **B48B5F** is a dark color, and the websafe version is hex **CC9966**. A complement of this color would be **5F88B4**, and the grayscale version is **929292**.

A 20% lighter version of the original color is **EEC092**, and **7D5930** is the 20% darker color. If you saturate the color by 10%, you get **B4824D**, and if you desaturate by 10%, it is **B49471**.

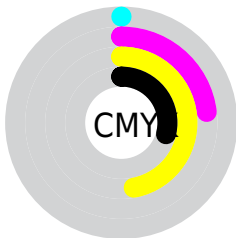
# Distribution



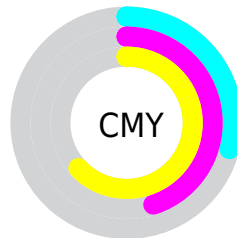
- Red (71%)
- Green (55%)
- Blue (37%)



- Red (68%)
- Yellow (71%)
- Blue (37%)



- Cyan (0%)
- Magenta (23%)
- Yellow (47%)
- Black (29%)



- Cyan (29%)
- Magenta (45%)
- Yellow (63%)

# Brightness & Saturation Gradients

These gradients show how the Hex color B48B5F changes by changing the brightness by 10 percent. The first figure shows a shift by +10% for each color and the second figure -10%.

Similar to the brightness gradients but the following saturation gradients show a change of the Hex color B48B5F by changing the saturation by 10% instead.





B48B5F



B48B5F

FFFFFF



987247



EEC092



7D5930



FFDCAD



634219



FFF9C8



492C01



FFFFE5



301700



180000



000000



B48B5F



B48B5F



B4824D



B49471

 B47A3B

 B49C83

 B47129

 B4A595

 B46817

 B4AEA7

 B46005

 B4B6B9

 B45D00

 B4BFCB

 B4C8DD

 B4D0EF

 B4D9FF

# Harmonies

## Analogous

The Analogous color harmony consists of three colors that are next to each other on the color wheel.



C48270



B48B5F



9B945C

# Triad

The Triadic color harmony groups three colors that are evenly spaced from another and form a triangle on the color wheel.



B48B5F



3AA29C



A388BC

# Complementary

The Complementary color scheme is a pair of colors which are on the opposite of each other on the color wheel.



B48B5F



5F88B4

# Split Complementary

Split-complementary colors differ from the complementary color scheme. The scheme consists of three colors, the original color and two neighbors of the complement color.



7D92C8



B48B5F



2FA0B6

# Square

The Square scheme is like the rectangle color scheme, but the four colors are evenly spaced on the color wheel.



B48B5F



5BA080



519AC6



BE80A5

# Rectangle

The Rectangle color scheme consists of four colors that form a rectangle on the color wheel.



B48B5F



879963



519AC6



988BC1



# Sweetspot

The Sweet Spot groups the original color and five complimentary colors.



B48B5F



EBDBCA



B45F88



756C61



F5F5F5



757575



# Same Dimension

The Same Dimension uses a secret algorithm to generate beautiful new colors.



B48B5F



EBAA65



B3B45F



595550



994F00



1A0D00



# Inverse Universe

The Inverse Universe completely reimagines the original color for something new.



5F88B4



65A5EB



605FB4



505559



004A99

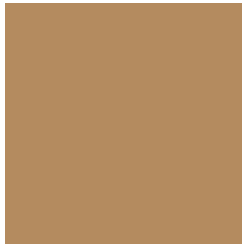


000C1A



# Previews

## White Background



This preview shows how the Hex color B48B5F looks on a white background.

## Color Contrast Check

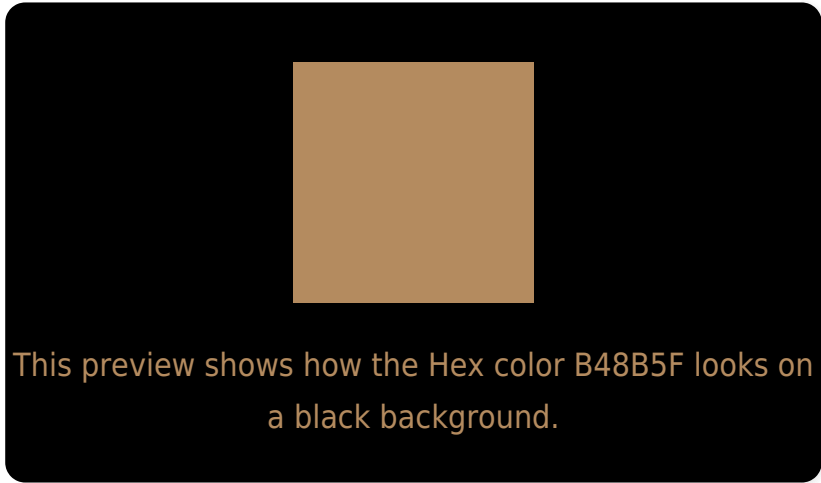
Large Text (above 18pt) WCAG AA ✓ Pass

Any Text WCAG AA × Fail

Large Text (above 18pt) WCAG AAA × Fail

Any Text WCAG AAA × Fail

# Black Background



## Color Contrast Check

Large Text (above 18pt) WCAG AA ✓ Pass

Any Text WCAG AA ✓ Pass

Large Text (above 18pt) WCAG AAA ✓ Pass

Any Text WCAG AAA × Fail

If you want to check with other color combinations, try the [Color Contrast Checker](#).



## Hex B48B5F Background



This preview shows how black text looks on a background with the Hex color B48B5F.



This preview shows how white text looks on a background with the Hex color B48B5F.

# Color Blindness Simulation

Color vision deficiency is a very complex topic, and I could not describe the different causes any better than Wikipedia does, so if you want to learn more, you should check out their [article about color blindness](#).

## Dichromacy



**Original Color**  
B48B5F

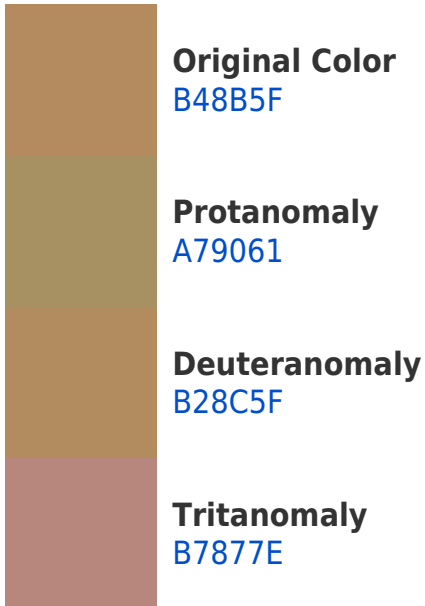
**Protanopia**  
9F9362

**Deuteranopia**  
B18C5F

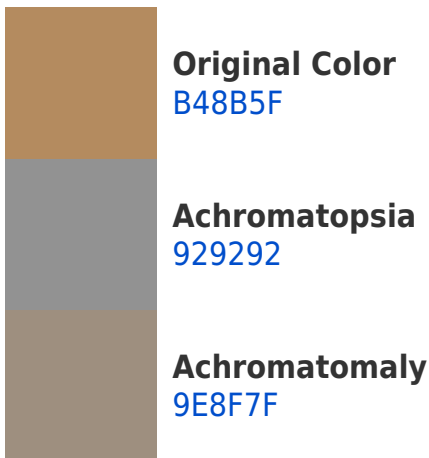


**Tritanopia**  
B8858F

# Trichromacy



# Monochromacy



# CSS Examples

## Text

The CSS property to change the color of the text to Hex B48B5F is called "color". The color property can be set on classes, ids or directly on the HTML element.

This example shows how text in the color #B48B5F looks like.

```
.text, #text, p{  
    color:#B48B5F  
}
```

If you want to add a text shadow in that color use the text-shadow property, you can generate a text shadow directly with our [CSS Text Shadow Generator](#).

Here you see how black text with a 4 pixel #B48B5F colored shadow looks like.

```
.shadow{ text-shadow: 4px 4px 2px #B48B5F
}
```

## Border

The CSS property to change the border of an element to Hex B48B5F is called "border". The border property can be set on classes, ids or directly on the HTML element.

This example shows the color as border, it can be applied via the CSS property "border" or "border-color".

```
.border, #border, table{ border:4px solid
#B48B5F }
```

If only the border color should be changed use the property `border-color`.

```
.border{ border-color:#B48B5F }
```

If you want to add a box shadow in that color use:

Here you see how a box with a 4 pixel #B48B5F colored shadow looks like.

```
.boxshadow{ -moz-box-shadow:4px 4px 4px  
4px #B48B5F; -webkit-box-shadow:4px 4px  
4px 4px #B48B5F; box-shadow:4px 4px 4px  
4px #B48B5F }
```

# Background

The CSS property to change the background color of an element to Hex B48B5F is called "background". The background property can be set on classes, ids or directly on the HTML element.

```
.background, #background, body{  
background:#B48B5F }
```

If only the background color should be changed can be used:

```
.background{ background-color:#B48B5F }
```

This example shows the color as background, it is applied via the CSS property "background".

To optimize and compress your CSS code, you can use our [online CSS compressor and optimizer](#) based on csstidy. If you want to create a linear or radial gradient as background or border, check our [CSS Gradient Generator](#).



Hey! You found this booklet interesting? Support Converting Colors with the new Membership Option!

The pro membership hides all ads, plus gives you double the colors in the color bucket, and more awesome pro features!

**[Learn more, Memberships starting at \\$2.50/m!](#)**

**Follow me  
on Twitter!**

@ConvertingColor