

# Converting Colors

Hex(B48F88)

Have a look what the booklet for  
Hex(B48F88) contains.

<b>Hex(B48F88)</b> .....	3
<i><b>Conversions</b></i> .....	4
<i><b>Details</b></i> .....	6
<i><b>Harmonies</b></i> .....	11
<i><b>Previews</b></i> .....	23
<i><b>Color Blindness Simulation</b></i> .....	26
<i><b>CSS Examples</b></i> .....	29

# **Color**

**Hex(B48F88)**

# Conversions

## Conversions Part 1

Format	Color
Hex	B48F88
RGB	180, 143, 136
RGB Percent	71%, 56%, 53%
CMY	0.2941, 0.4392, 0.4667
CMYK	0.00, 0.21, 0.24, 0.29
HSL	10°, 23%, 62%
HSV	10°, 24%, 71%
XYZ	33.0888, 31.1258, 27.5565
YIQ	153.2650, 24.2990, 5.6670

# Conversions

## Conversions Part 2

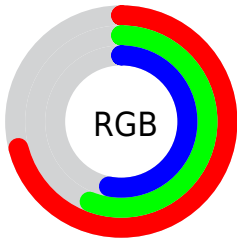
Format	Color
<a href="#">RYB</a>	<a href="#">180, 144, 136</a>
Decimal	<a href="#">11833224</a>
CIELab	<a href="#">62.61, 12.88, 9.03</a>
CIELCh	<a href="#">63, 15.735, 35.033</a>
Yxy	<a href="#">31.1258, 0.3606, 0.3392</a>
Android (android.graphics.Color)	<a href="#">4290023304 (0xFFB48F88)</a>
YUV	<a href="#">153.2650, -8.5116, 23.4466</a>
Hunter-Lab	<a href="#">55.7905, 8.2332, 9.7684</a>

# Details

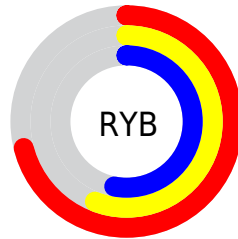
The Hex color **B48F88** is a light color, and the websafe version is hex **CC9999**. A complement of this color would be **88ADB4**, and the grayscale version is **999999**.

A 20% lighter version of the original color is **ECC5BD**, and **7E5D56** is the 20% darker color. If you saturate the color by 10%, you get **B48076**, and if you desaturate by 10%, it is **B49E9A**.

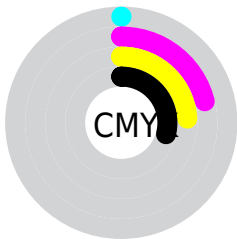
# Distribution



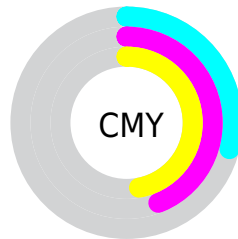
- Red (71%)
- Green (56%)
- Blue (53%)



- Red (71%)
- Yellow (56%)
- Blue (53%)



- Cyan (0%)
- Magenta (21%)
- Yellow (24%)
- Black (29%)



- Cyan (29%)
- Magenta (44%)
- Yellow (47%)

# Brightness & Saturation Gradients

These gradients show how the Hex color B48F88 changes by changing the brightness by 10 percent. The first figure shows a shift by +10% for each color and the second figure -10%.

Similar to the brightness gradients but the following saturation gradients show a change of the Hex color B48F88 by changing the saturation by 10% instead.



 B48F88

 B48F88

FFFFFF

 99756F

 ECC5BD

 7E5D56

 FFE1D9

 65453F

 FFFEF6

 4C2E29

 341915

 200000

 000000

 B48F88

 B48F88

 B48076

 B49E9A

 B47164

 B4ADAC

 B46252

 B4BCBE

 B45240

 B4CCD0

 B4432E

 B4DBE2

 B4341C

 B4EAF4

 B4250A

 B4F9FF

 B41D00

 B4FFFF

# Harmonies

## Analogous

The Analogous color harmony consists of three colors that are next to each other on the color wheel.



B48E96



B48F88



AD937F

# Triad

The Triadic color harmony groups three colors that are evenly spaced from another and form a triangle on the color wheel.



B48F88



819E8B



8B98B3

# Complementary

The Complementary color scheme is a pair of colors which are on the opposite of each other on the color wheel.



B48F88



88ADB4

# Split Complementary

Split-complementary colors differ from the complementary color scheme. The scheme consists of three colors, the original color and two neighbors of the complement color.



7B9CB0



B48F88



75A099

# Square

The Square scheme is like the rectangle color scheme, but the four colors are evenly spaced on the color wheel.



B48F88



909B80



739FA7



9D93AE

# Rectangle

The Rectangle color scheme consists of four colors that form a rectangle on the color wheel.



B48F88



A5967C



739FA7



8599B3



# Sweetspot

The Sweet Spot groups the original color and five complimentary colors.



B48F88



EBDDDA



B488AD



756D6C



F5F5F5



757575



# Same Dimension

The Same Dimension uses a secret algorithm to generate beautiful new colors.



B48F88



EBB1A7



B4A588



595250



991800



1A0400



# Inverse Universe

The Inverse Universe completely reimagines the original color for something new.



88ADB4



A7E0EB



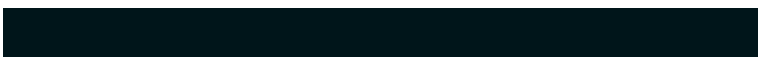
8897B4



505859



008199

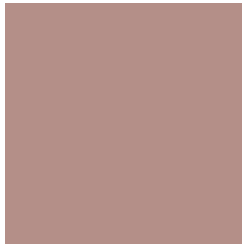


00151A



# Previews

## White Background



This preview shows how the Hex color B48F88 looks on a white background.

## Color Contrast Check

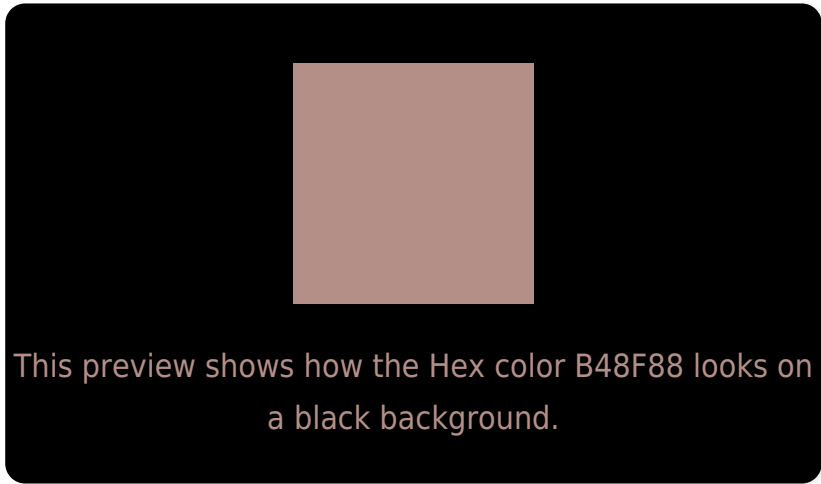
Large Text (above 18pt) WCAG AA × Fail

Any Text WCAG AA × Fail

Large Text (above 18pt) WCAG AAA × Fail

Any Text WCAG AAA × Fail

# Black Background



## Color Contrast Check

Large Text (above 18pt) WCAG AA ✓ Pass

Any Text WCAG AA ✓ Pass

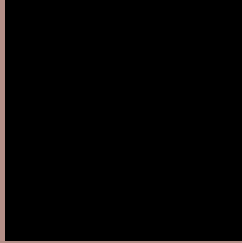
Large Text (above 18pt) WCAG AAA ✓ Pass

Any Text WCAG AAA ✓ Pass

If you want to check with other color combinations, try the [Color Contrast Checker](#).



## Hex B48F88 Background



This preview shows how black text looks on a background with the Hex color B48F88.

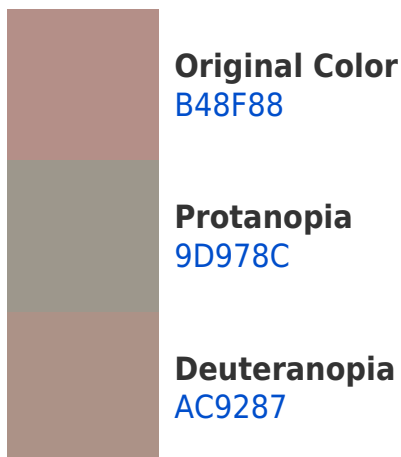


This preview shows how white text looks on a background with the Hex color B48F88.

# Color Blindness Simulation

Color vision deficiency is a very complex topic, and I could not describe the different causes any better than Wikipedia does, so if you want to learn more, you should check out their [article about color blindness](#).

## Dichromacy





**Tritanopia**  
B68D98

# Trichromacy



**Original Color**  
B48F88

**Protanomaly**  
A5948B

**Deuteranomaly**  
AF9187

**Tritanomaly**  
B58E92

# Monochromacy



**Original Color**  
B48F88

**Achromatopsia**  
999999

**Achromatomaly**  
A39593

# CSS Examples

## Text

The CSS property to change the color of the text to Hex B48F88 is called "color". The color property can be set on classes, ids or directly on the HTML element.

This example shows how text in the color #B48F88 looks like.

```
.text, #text, p{  
    color:#B48F88  
}
```

If you want to add a text shadow in that color use the text-shadow property, you can generate a text shadow directly with our [CSS Text Shadow Generator](#).

Here you see how black text with a 4 pixel #B48F88 colored shadow looks like.

```
.shadow{ text-shadow: 4px 4px 2px #B48F88
}
```

## Border

The CSS property to change the border of an element to Hex B48F88 is called "border". The border property can be set on classes, ids or directly on the HTML element.

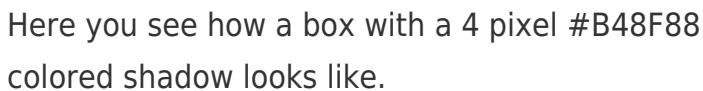
This example shows the color as border, it can be applied via the CSS property "border" or "border-color".

```
.border, #border, table{ border:4px solid
#B48F88 }
```

If only the border color should be changed use the property `border-color`.

```
.border{ border-color:#B48F88 }
```

If you want to add a box shadow in that color use:



Here you see how a box with a 4 pixel #B48F88 colored shadow looks like.

```
.boxshadow{ -moz-box-shadow:4px 4px 4px  
4px #B48F88; -webkit-box-shadow:4px 4px  
4px 4px #B48F88; box-shadow:4px 4px 4px  
4px #B48F88 }
```

# Background

The CSS property to change the background color of an element to Hex B48F88 is called "background". The background property can be set on classes, ids or directly on the HTML element.

```
.background, #background, body{  
background:#B48F88 }
```

If only the background color should be changed can be used:

```
.background{ background-color:#B48F88 }
```

This example shows the color as background, it is applied via the CSS property "background".

To optimize and compress your CSS code, you can use our [online CSS compressor and optimizer](#) based on csstidy. If you want to create a linear or radial gradient as background or border, check our [CSS Gradient Generator](#).



Hey! You found this booklet interesting? Support Converting Colors with the new Membership Option!

The pro membership hides all ads, plus gives you double the colors in the color bucket, and more awesome pro features!

**[Learn more, Memberships starting at \\$2.50/m!](#)**

**Follow me  
on Twitter!**

@ConvertingColor