

# Converting Colors

Hex(B48F91)

Have a look what the booklet for  
Hex(B48F91) contains.

<b>Hex(B48F91)</b> .....	3
<i><b>Conversions</b></i> .....	4
<i><b>Details</b></i> .....	6
<i><b>Harmonies</b></i> .....	11
<i><b>Previews</b></i> .....	23
<i><b>Color Blindness Simulation</b></i> .....	26
<i><b>CSS Examples</b></i> .....	29

# **Color**

**Hex(B48F91)**

# Conversions

## Conversions Part 1

Format	Color
Hex	B48F91
RGB	180, 143, 145
RGB Percent	71%, 56%, 57%
CMY	0.2941, 0.4392, 0.4314
CMYK	0.00, 0.21, 0.19, 0.29
HSL	357°, 20%, 63%
HSV	357°, 21%, 71%
XYZ	33.7557, 31.3926, 31.0683
YIQ	154.2910, 21.4100, 8.4660

# Conversions

## Conversions Part 2

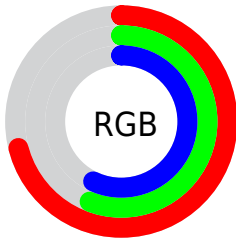
<b>Format</b>	<b>Color</b>
<a href="#">RYB</a>	<a href="#">180, 143, 145</a>
Decimal	<a href="#">11833233</a>
CIELab	<a href="#">62.84, 14.27, 4.26</a>
CIELCh	<a href="#">63, 14.888, 16.619</a>
Yxy	<a href="#">31.3926, 0.3508, 0.3263</a>
Android (android.graphics.Color)	<a href="#">4290023313 (0xFFB48F91)</a>
YUV	<a href="#">154.2910, -4.5805, 22.5468</a>
Hunter-Lab	<a href="#">56.0291, 9.4896, 6.3438</a>

# Details

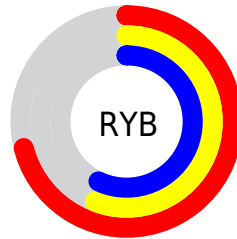
The Hex color **B48F91** is a light color, and the websafe version is hex **CC9999**. A complement of this color would be **8FB4B2**, and the grayscale version is **9A9A9A**.

A 20% lighter version of the original color is **ECC5C7**, and **7F5D5F** is the 20% darker color. If you saturate the color by 10%, you get **B47D80**, and if you desaturate by 10%, it is **B4A1A2**.

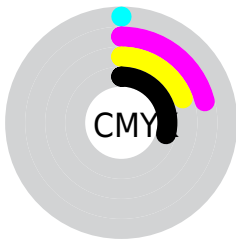
# Distribution



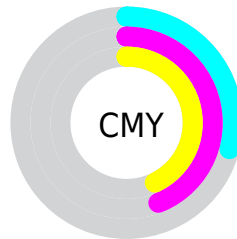
- Red (71%)
- Green (56%)
- Blue (57%)



- Red (71%)
- Yellow (56%)
- Blue (57%)



- Cyan (0%)
- Magenta (21%)
- Yellow (19%)
- Black (29%)



- Cyan (29%)
- Magenta (44%)
- Yellow (43%)

# Brightness & Saturation Gradients

These gradients show how the Hex color B48F91 changes by changing the brightness by 10 percent. The first figure shows a shift by +10% for each color and the second figure -10%.

Similar to the brightness gradients but the following saturation gradients show a change of the Hex color B48F91 by changing the saturation by 10% instead.



 B48F91

 B48F91

FFFFFF

 997577

 ECC5C7

 7F5D5F

 FFE1E3

 654547

FFFEFF

 4D2E31

 35191C

 220001

 000000

 B48F91

 B48F91

 B47D80

 B4A1A2

 B46B6F

 B4B3B3

 B4595E

 B4C5C4

 B4474D

 B4D7D5

 B4353C

 B4E9E6

 B4232B

 B4FBF7

 B4111A

 B4FFFF

 B4000A

# Harmonies

## Analogous

The Analogous color harmony consists of three colors that are next to each other on the color wheel.



AF8F9E



B48F91



B19185

# Triad

The Triadic color harmony groups three colors that are evenly spaced from another and form a triangle on the color wheel.



B48F91



8B9D86



829BB1

# Complementary

The Complementary color scheme is a pair of colors which are on the opposite of each other on the color wheel.



B48F91



8FB4B2

# Split Complementary

Split-complementary colors differ from the complementary color scheme. The scheme consists of three colors, the original color and two neighbors of the complement color.



779EAB



B48F91



7E9F91

# Square

The Square scheme is like the rectangle color scheme, but the four colors are evenly spaced on the color wheel.



B48F91



9B997F



76A09F



9397B1

# Rectangle

The Rectangle color scheme consists of four colors that form a rectangle on the color wheel.



B48F91



AC9480



76A09F



7E9CB0



# Sweetspot

The Sweet Spot groups the original color and five complimentary colors.



B48F91



EBDDDD



B28FB4



756D6E



F5F5F5



757575



# Same Dimension

The Same Dimension uses a secret algorithm to generate beautiful new colors.



B48F91



EBB0B3



B49F8F



595051



990008



1A0001



# Inverse Universe

The Inverse Universe completely reimagines the original color for something new.



B48F91



EBB0B3



8FA4B4



595051



990008

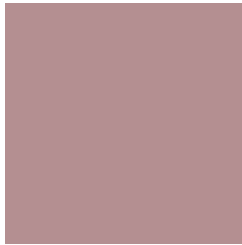


1A0001



# Previews

## White Background



This preview shows how the Hex color B48F91 looks on a white background.

## Color Contrast Check

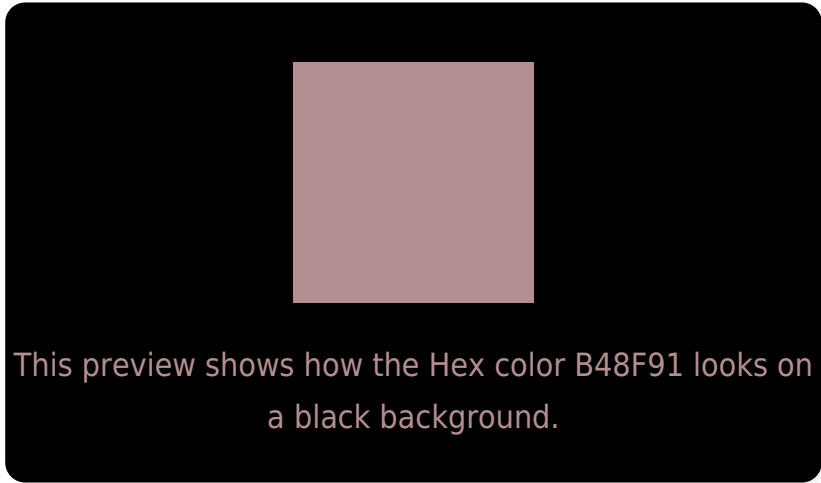
Large Text (above 18pt) WCAG AA × Fail

Any Text WCAG AA × Fail

Large Text (above 18pt) WCAG AAA × Fail

Any Text WCAG AAA × Fail

# Black Background



## Color Contrast Check

Large Text (above 18pt) WCAG AA ✓ Pass

Any Text WCAG AA ✓ Pass

Large Text (above 18pt) WCAG AAA ✓ Pass

Any Text WCAG AAA ✓ Pass

If you want to check with other color combinations, try the [Color Contrast Checker](#).



## Hex B48F91 Background



This preview shows how black text looks on a background with the Hex color B48F91.

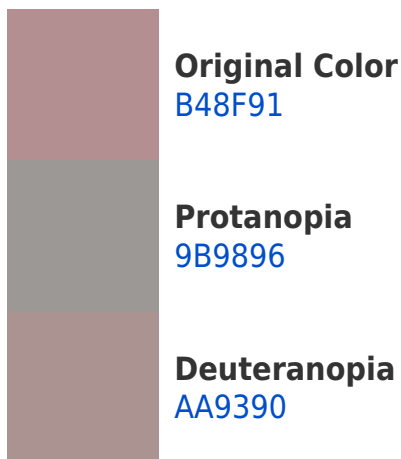


This preview shows how white text looks on a background with the Hex color B48F91.

# Color Blindness Simulation

Color vision deficiency is a very complex topic, and I could not describe the different causes any better than Wikipedia does, so if you want to learn more, you should check out their [article about color blindness](#).

## Dichromacy





**Tritanopia**  
B58E99

# Trichromacy



**Original Color**  
B48F91

**Protanomaly**  
A49594

**Deuteranomaly**  
AE9290

**Tritanomaly**  
B58E96

# Monochromacy



**Original Color**  
B48F91

**Achromatopsia**  
9A9A9A

**Achromatomaly**  
A39697

# CSS Examples

## Text

The CSS property to change the color of the text to Hex B48F91 is called "color". The color property can be set on classes, ids or directly on the HTML element.

This example shows how text in the color #B48F91 looks like.

```
.text, #text, p{  
    color:#B48F91  
}
```

If you want to add a text shadow in that color use the text-shadow property, you can generate a text shadow directly with our [CSS Text Shadow Generator](#).

Here you see how black text with a 4 pixel #B48F91 colored shadow looks like.

```
.shadow{ text-shadow: 4px 4px 2px #B48F91  
}
```

## Border

The CSS property to change the border of an element to Hex B48F91 is called "border". The border property can be set on classes, ids or directly on the HTML element.

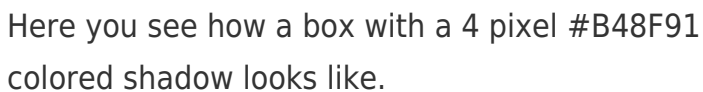
This example shows the color as border, it can be applied via the CSS property "border" or "border-color".

```
.border, #border, table{ border:4px solid  
#B48F91 }
```

If only the border color should be changed use the property `border-color`.

```
.border{ border-color:#B48F91 }
```

If you want to add a box shadow in that color use:



Here you see how a box with a 4 pixel #B48F91 colored shadow looks like.

```
.boxshadow{ -moz-box-shadow:4px 4px 4px  
4px #B48F91; -webkit-box-shadow:4px 4px  
4px 4px #B48F91; box-shadow:4px 4px 4px  
4px #B48F91 }
```

# Background

The CSS property to change the background color of an element to Hex B48F91 is called "background". The background property can be set on classes, ids or directly on the HTML element.

```
.background, #background, body{  
background:#B48F91 }
```

If only the background color should be changed can be used:

```
.background{ background-color:#B48F91 }
```

This example shows the color as background, it is applied via the CSS property "background".

To optimize and compress your CSS code, you can use our [online CSS compressor and optimizer](#) based on csstidy. If you want to create a linear or radial gradient as background or border, check our [CSS Gradient Generator](#).



Hey! You found this booklet interesting? Support Converting Colors with the new Membership Option!

The pro membership hides all ads, plus gives you double the colors in the color bucket, and more awesome pro features!

**[Learn more, Memberships starting at \\$2.50/m!](#)**

**Follow me  
on Twitter!**

@ConvertingColor