

Converting Colors

Hex(B4939B)

Have a look what the booklet for
Hex(B4939B) contains.

Hex(B4939B)	3
<i>Conversions</i>	4
<i>Details</i>	6
<i>Harmonies</i>	11
<i>Previews</i>	23
<i>Color Blindness Simulation</i>	26
<i>CSS Examples</i>	29

Color

Hex(B4939B)

Conversions

Conversions Part 1

Format	Color
Hex	B4939B
RGB	180, 147, 155
RGB Percent	71%, 58%, 61%
CMY	0.2941, 0.4235, 0.3922
CMYK	0.00, 0.18, 0.14, 0.29
HSL	345°, 18%, 64%
HSV	345°, 18%, 71%
XYZ	35.1725, 32.9373, 35.5141
YIQ	157.7790, 17.1000, 9.4840

Conversions

Conversions Part 2

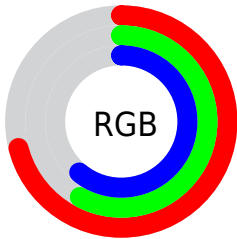
Format	Color
RYB	180, 147, 155
Decimal	11834267
CIELab	64.11, 13.67, 0.45
CIElCh	64, 13.675, 1.884
Yxy	32.9373, 0.3394, 0.3179
Android (android.graphics.Color)	4290024347 (0xFFB4939B)
YUV	157.7790, -1.3700, 19.4878
Hunter-Lab	57.3910, 8.9607, 3.4845

Details

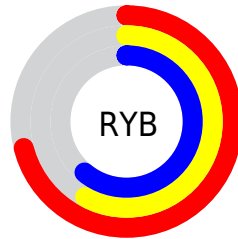
The Hex color **B4939B** is a light color, and the websafe version is hex **CC9999**. A complement of this color would be **93B4AC**, and the grayscale version is **9E9E9E**.

A 20% lighter version of the original color is **ECC9D1**, and **7F6068** is the 20% darker color. If you saturate the color by 10%, you get **B4818D**, and if you desaturate by 10%, it is **B4A5A9**.

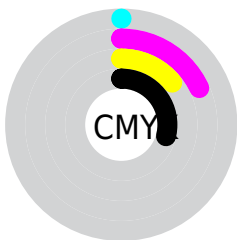
Distribution



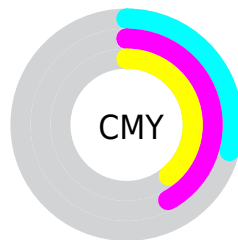
- Red (71%)
- Green (58%)
- Blue (61%)



- Red (71%)
- Yellow (58%)
- Blue (61%)



- Cyan (0%)
- Magenta (18%)
- Yellow (14%)
- Black (29%)



- Cyan (29%)
- Magenta (42%)
- Yellow (39%)

Brightness & Saturation Gradients

These gradients show how the Hex color B4939B changes by changing the brightness by 10 percent. The first figure shows a shift by +10% for each color and the second figure -10%.

Similar to the brightness gradients but the following saturation gradients show a change of the Hex color B4939B by changing the saturation by 10% instead.

 B4939B

 B4939B

FFFFFF

 997981

 ECC9D1

 7F6068

 FFE5EE

 654850

 4D3239

 361C24

 21040E

 000000

 B4939B

 B4939B

 B4818D

 B4A5A9

 B46F80

 B4B7B6

 B45D72

 B4C9C4

 B44B64

 B4DBD2

 B43957

 B4EDDF

 B42749

 B4FFED

 B4153C

 B4FFFA

 B4032E

 B4FFFF

 B4002C

Harmonies

Analogous

The Analogous color harmony consists of three colors that are next to each other on the color wheel.



AC95A7



B4939B



B5948F

Triad

The Triadic color harmony groups three colors that are evenly spaced from another and form a triangle on the color wheel.



B4939B



979F87



82A0B0

Complementary

The Complementary color scheme is a pair of colors which are on the opposite of each other on the color wheel.



B4939B



93B4AC

Split Complementary

Split-complementary colors differ from the complementary color scheme. The scheme consists of three colors, the original color and two neighbors of the complement color.



7CA2A8



B4939B



89A190

Square

The Square scheme is like the rectangle color scheme, but the four colors are evenly spaced on the color wheel.



B4939B



A49B83



7FA39C



8F9CB3

Rectangle

The Rectangle color scheme consists of four colors that form a rectangle on the color wheel.



B4939B



B29689



7FA39C



7FA1AE

Sweetspot

The Sweet Spot groups the original color and five complimentary colors.



B4939B



EBDDE0



AC93B4



756D6F



F5F5F5



757575

Same Dimension

The Same Dimension uses a secret algorithm to generate beautiful new colors.



B4939B



EBB7C3



B49B93



595052



990025



1A0006

Inverse Universe

The Inverse Universe completely reimagines the original color for something new.



B4939B



EBB7C3



93ACB4



595052



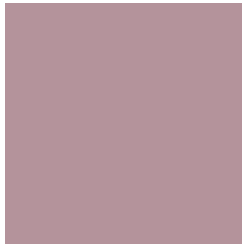
990025



1A0006

Previews

White Background



This preview shows how the Hex color B4939B looks on a white background.

Color Contrast Check

Large Text (above 18pt) WCAG AA × Fail

Any Text WCAG AA × Fail

Large Text (above 18pt) WCAG AAA × Fail

Any Text WCAG AAA × Fail

Black Background



This preview shows how the Hex color B4939B looks on a black background.

Color Contrast Check

Large Text (above 18pt) WCAG AA ✓ Pass

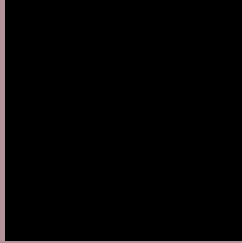
Any Text WCAG AA ✓ Pass

Large Text (above 18pt) WCAG AAA ✓ Pass

Any Text WCAG AAA ✓ Pass

If you want to check with other color combinations, try the [Color Contrast Checker](#).

Hex B4939B Background



This preview shows how black text looks on a background with the Hex color B4939B.

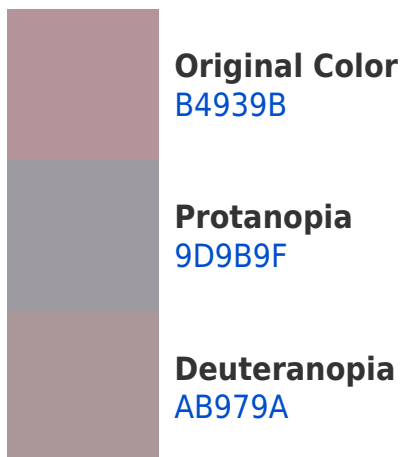



This preview shows how white text looks on a background with the Hex color B4939B.

Color Blindness Simulation

Color vision deficiency is a very complex topic, and I could not describe the different causes any better than Wikipedia does, so if you want to learn more, you should check out their [article about color blindness](#).

Dichromacy





Tritanopia
B4939E

Trichromacy



Original Color
B4939B

Protanomaly
A5989E

Deuteranomaly
AE969A

Tritanomaly
B4939D

Monochromacy



Original Color
B4939B

Achromatopsia
9E9E9E

Achromatomaly
A69A9D

CSS Examples

Text

The CSS property to change the color of the text to Hex B4939B is called "color". The color property can be set on classes, ids or directly on the HTML element.

This example shows how text in the color #B4939B looks like.

```
.text, #text, p{  
    color:#B4939B  
}
```

If you want to add a text shadow in that color use the text-shadow property, you can generate a text shadow directly with our [CSS Text Shadow Generator](#).

Here you see how black text with a 4 pixel #B4939B colored shadow looks like.

```
.shadow{ text-shadow: 4px 4px 2px #B4939B
}
```

Border

The CSS property to change the border of an element to Hex B4939B is called "border". The border property can be set on classes, ids or directly on the HTML element.

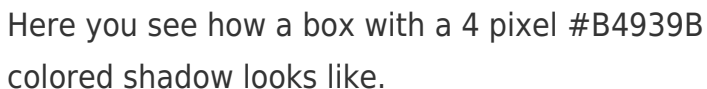
This example shows the color as border, it can be applied via the CSS property "border" or "border-color".

```
.border, #border, table{ border:4px solid
#B4939B }
```

If only the border color should be changed use the property `border-color`.

```
.border{ border-color:#B4939B }
```

If you want to add a box shadow in that color use:



Here you see how a box with a 4 pixel #B4939B colored shadow looks like.

```
.boxshadow{ -moz-box-shadow:4px 4px 4px  
4px #B4939B; -webkit-box-shadow:4px 4px  
4px 4px #B4939B; box-shadow:4px 4px 4px  
4px #B4939B }
```

Background

The CSS property to change the background color of an element to Hex B4939B is called "background". The background property can be set on classes, ids or directly on the HTML element.

```
.background, #background, body{  
background:#B4939B }
```

If only the background color should be changed can be used:

```
.background{ background-color:#B4939B }
```

This example shows the color as background, it is applied via the CSS property "background".

To optimize and compress your CSS code, you can use our [online CSS compressor and optimizer](#) based on csstidy. If you want to create a linear or radial gradient as background or border, check our [CSS Gradient Generator](#).

Hey! You found this booklet interesting? Support Converting Colors with the new Membership Option!

The pro membership hides all ads, plus gives you double the colors in the color bucket, and more awesome pro features!

[Learn more, Memberships starting at \\$2.50/m!](#)

**Follow me
on Twitter!**

@ConvertingColor