

Converting Colors

Hex(B49CA4)

Have a look what the booklet for
Hex(B49CA4) contains.

Hex(B49CA4)	3
<i>Conversions</i>	4
<i>Details</i>	6
<i>Harmonies</i>	11
<i>Previews</i>	23
<i>Color Blindness Simulation</i>	26
<i>CSS Examples</i>	29

Color

Hex(B49CA4)

Conversions

Conversions Part 1

Format	Color
Hex	B49CA4
RGB	180, 156, 164
RGB Percent	71%, 61%, 64%
CMY	0.2941, 0.3882, 0.3569
CMYK	0.00, 0.13, 0.09, 0.29
HSL	340°, 14%, 66%
HSV	340°, 13%, 71%
XYZ	37.4117, 36.1606, 40.1298
YIQ	164.0880, 11.7360, 7.5760

Conversions

Conversions Part 2

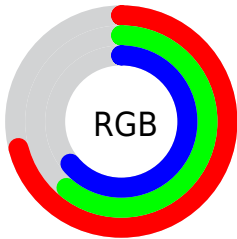
Format	Color
RYB	180, 156, 164
Decimal	11836580
CIELab	66.64, 10.21, -0.91
CIELCh	67, 10.255, 354.923
Yxy	36.1606, 0.3290, 0.3180
Android (android.graphics.Color)	4290026660 (0xFFB49CA4)
YUV	164.0880, -0.0434, 13.9548
Hunter-Lab	60.1337, 5.8185, 2.5267

Details

The Hex color **B49CA4** is a light color, and the websafe version is hex **999999**. A complement of this color would be **9CB4AC**, and the grayscale version is **A4A4A4**.

A 20% lighter version of the original color is **ECD3DB**, and **7F6970** is the 20% darker color. If you saturate the color by 10%, you get **B48A98**, and if you desaturate by 10%, it is **B4AEB0**.

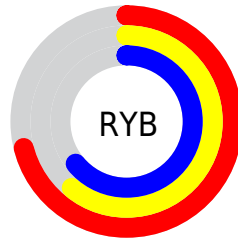
Distribution



Red (71%)

Green (61%)

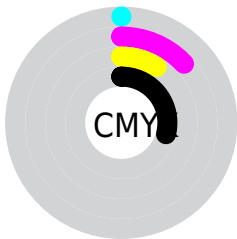
Blue (64%)



Red (71%)

Yellow (61%)

Blue (64%)

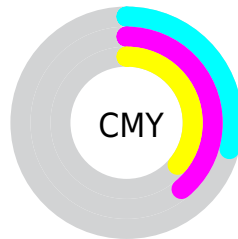


Cyan (0%)

Magenta (13%)

Yellow (9%)

Black (29%)



Cyan (29%)

Magenta (39%)

Yellow (36%)

Brightness & Saturation Gradients

These gradients show how the Hex color B49CA4 changes by changing the brightness by 10 percent. The first figure shows a shift by +10% for each color and the second figure -10%.

Similar to the brightness gradients but the following saturation gradients show a change of the Hex color B49CA4 by changing the saturation by 10% instead.

 B49CA4

 B49CA4

FFFFFF

 99828A

 ECD3DB

 7F6970

 FFEFF7

 665158

 4E3A41

 37242B

 210F16

 000000

 B49CA4

 B49CA4

 B48A98

 B4AEB0

 B4788C

 B4C0BC

 B46680

 B4D2C8

 B45474

 B4E4D4

 B44268

 B4F6E0

 B4305C

 B4FFEC

 B41E50

 B4FFF8

 B40C44

 B4FFFF

 B4003C

Harmonies

Analogous

The Analogous color harmony consists of three colors that are next to each other on the color wheel.



AD9EAD



B49CA4



B69C9B

Triad

The Triadic color harmony groups three colors that are evenly spaced from another and form a triangle on the color wheel.



B49CA4



A1A491



8EA6B1

Complementary

The Complementary color scheme is a pair of colors which are on the opposite of each other on the color wheel.



B49CA4



9CB4AC

Split Complementary

Split-complementary colors differ from the complementary color scheme. The scheme consists of three colors, the original color and two neighbors of the complement color.



8BA7A9



B49CA4



97A697

Square

The Square scheme is like the rectangle color scheme, but the four colors are evenly spaced on the color wheel.



B49CA4



ABA190



8EA8A0



97A3B4

Rectangle

The Rectangle color scheme consists of four colors that form a rectangle on the color wheel.



B49CA4



B59D95



8EA8A0



8CA7AF

Sweetspot

The Sweet Spot groups the original color and five complimentary colors.



B49CA4



EBE1E4



AC9CB4



756F71



F5F5F5



757575

Same Dimension

The Same Dimension uses a secret algorithm to generate beautiful new colors.



B49CA4



EBC5D2



B4A09C



595053



990033



1A0009

Inverse Universe

The Inverse Universe completely reimagines the original color for something new.



B49CA4



EBC5D2



9CB0B4



595053



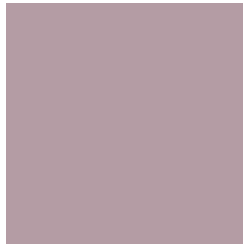
990033



1A0009

Previews

White Background



This preview shows how the Hex color B49CA4 looks on a white background.

Color Contrast Check

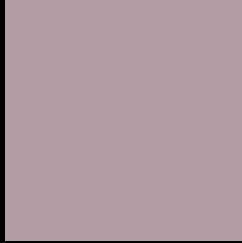
Large Text (above 18pt) WCAG AA × Fail

Any Text WCAG AA × Fail

Large Text (above 18pt) WCAG AAA × Fail

Any Text WCAG AAA × Fail

Black Background



This preview shows how the Hex color B49CA4 looks on a black background.

Color Contrast Check

Large Text (above 18pt) WCAG AA ✓ Pass

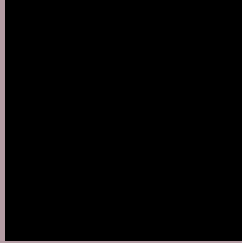
Any Text WCAG AA ✓ Pass

Large Text (above 18pt) WCAG AAA ✓ Pass

Any Text WCAG AAA ✓ Pass

If you want to check with other color combinations, try the [Color Contrast Checker](#).

Hex B49CA4 Background



This preview shows how black text looks on a background with the Hex color B49CA4.

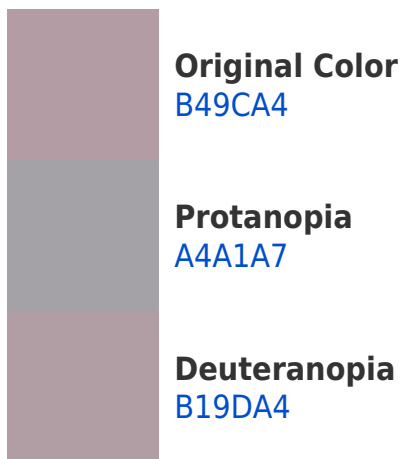


This preview shows how white text looks on a background with the Hex color B49CA4.

Color Blindness Simulation

Color vision deficiency is a very complex topic, and I could not describe the different causes any better than Wikipedia does, so if you want to learn more, you should check out their [article about color blindness](#).

Dichromacy





Tritanopia
B49BA8

Trichromacy



Original Color

B49CA4

Protanomaly

AA9FA6

Deuteranomaly

B29DA4

Tritanomaly

B49BA7

Monochromacy



Original Color

B49CA4

Achromatopsia

A4A4A4

Achromatomaly

AAA1A4

CSS Examples

Text

The CSS property to change the color of the text to Hex B49CA4 is called "color". The color property can be set on classes, ids or directly on the HTML element.

This example shows how text in the color #B49CA4 looks like.

```
.text, #text, p{  
    color:#B49CA4  
}
```

If you want to add a text shadow in that color use the text-shadow property, you can generate a text shadow directly with our [CSS Text Shadow Generator](#).

Here you see how black text with a 4 pixel #B49CA4 colored shadow looks like.

```
.shadow{ text-shadow: 4px 4px 2px #B49CA4
}
```

Border

The CSS property to change the border of an element to Hex B49CA4 is called "border". The border property can be set on classes, ids or directly on the HTML element.

This example shows the color as border, it can be applied via the CSS property "border" or "border-color".

```
.border, #border, table{ border:4px solid
#B49CA4 }
```

If only the border color should be changed use the property `border-color`.

```
.border{ border-color:#B49CA4 }
```

If you want to add a box shadow in that color use:

Here you see how a box with a 4 pixel #B49CA4 colored shadow looks like.

```
.boxshadow{ -moz-box-shadow:4px 4px 4px  
4px #B49CA4; -webkit-box-shadow:4px 4px  
4px 4px #B49CA4; box-shadow:4px 4px 4px  
4px #B49CA4 }
```

Background

The CSS property to change the background color of an element to Hex B49CA4 is called "background". The background property can be set on classes, ids or directly on the HTML element.

```
.background, #background, body{  
background:#B49CA4 }
```

If only the background color should be changed can be used:

```
.background{ background-color:#B49CA4 }
```

This example shows the color as background, it is applied via the CSS property "background".

To optimize and compress your CSS code, you can use our [online CSS compressor and optimizer](#) based on csstidy. If you want to create a linear or radial gradient as background or border, check our [CSS Gradient Generator](#).

Hey! You found this booklet interesting? Support Converting Colors with the new Membership Option!

The pro membership hides all ads, plus gives you double the colors in the color bucket, and more awesome pro features!

[Learn more, Memberships starting at \\$2.50/m!](#)

**Follow me
on Twitter!**

@ConvertingColor