

Converting Colors

Hex(B49D82)

Have a look what the booklet for
Hex(B49D82) contains.

Hex(B49D82)	3
<i>Conversions</i>	4
<i>Details</i>	6
<i>Harmonies</i>	11
<i>Previews</i>	23
<i>Color Blindness Simulation</i>	26
<i>CSS Examples</i>	29

Color

Hex(B49D82)

Conversions

Conversions Part 1

Format	Color
Hex	B49D82
RGB	180, 157, 130
RGB Percent	71%, 62%, 51%
CMY	0.2941, 0.3843, 0.4902
CMYK	0.00, 0.13, 0.28, 0.29
HSL	32°, 25%, 61%
HSV	32°, 28%, 71%
XYZ	34.9086, 35.4289, 26.1177
YIQ	160.7990, 22.3750, -3.5210

Conversions

Conversions Part 2

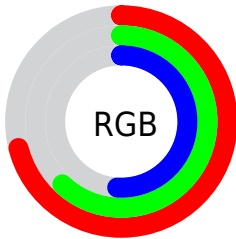
Format	Color
RYB	173, 180, 130
Decimal	11836802
CIELab	66.08, 4.27, 17.25
CIElCh	66, 17.774, 76.094
Yxy	35.4289, 0.3619, 0.3673
Android (android.graphics.Color)	4290026882 (0xFFB49D82)
YUV	160.7990, -15.1839, 16.8393
Hunter-Lab	59.5222, 0.5229, 15.6498

Details

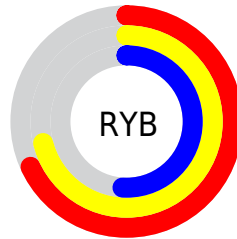
The Hex color **B49D82** is a light color, and the websafe version is hex **999966**. A complement of this color would be **8299B4**, and the grayscale version is **A1A1A1**.

A 20% lighter version of the original color is **ECD4B7**, and **7E6A51** is the 20% darker color. If you saturate the color by 10%, you get **B49570**, and if you desaturate by 10%, it is **B4A594**.

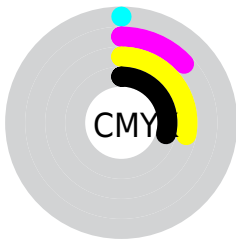
Distribution



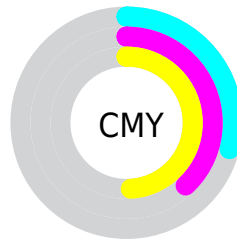
- Red (71%)
- Green (62%)
- Blue (51%)



- Red (68%)
- Yellow (71%)
- Blue (51%)



- Cyan (0%)
- Magenta (13%)
- Yellow (28%)
- Black (29%)



- Cyan (29%)
- Magenta (38%)
- Yellow (49%)

Brightness & Saturation Gradients

These gradients show how the Hex color B49D82 changes by changing the brightness by 10 percent. The first figure shows a shift by +10% for each color and the second figure -10%.

Similar to the brightness gradients but the following saturation gradients show a change of the Hex color B49D82 by changing the saturation by 10% instead.



B49D82



B49D82

FFFFFF



998369



ECD4B7



7E6A51



FFF0D3



655239



FFFFEF



4C3B24



35250F



1F1100



000000



B49D82



B49D82



B49570



B4A594

 B48C5E

 B4AEA6

 B4844C

 B4B6B8

 B47C3A

 B4BECA

 B47428

 B4C6DC

 B46B16

 B4CFEE

 B46304

 B4D7FF

 B46100

 B4DFFF

 B4E8FF

Harmonies

Analogous

The Analogous color harmony consists of three colors that are next to each other on the color wheel.



BF988A



B49D82



A4A282

Triad

The Triadic color harmony groups three colors that are evenly spaced from another and form a triangle on the color wheel.



B49D82



77AAA9



AE9AB7

Complementary

The Complementary color scheme is a pair of colors which are on the opposite of each other on the color wheel.



B49D82



8299B4

Split Complementary

Split-complementary colors differ from the complementary color scheme. The scheme consists of three colors, the original color and two neighbors of the complement color.



9A9FBF



B49D82



78A8B7

Square

The Square scheme is like the rectangle color scheme, but the four colors are evenly spaced on the color wheel.



B49D82



81A998



85A4BF



BC96A9

Rectangle

The Rectangle color scheme consists of four colors that form a rectangle on the color wheel.



B49D82



98A587



85A4BF



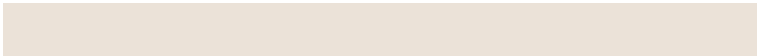
A89BBA

Sweetspot

The Sweet Spot groups the original color and five complimentary colors.



B49D82



EBE2D8



B48299



75706A



F5F5F5



757575

Same Dimension

The Same Dimension uses a secret algorithm to generate beautiful new colors.



B49D82



EBC79D



B2B482



595550



995300



1A0E00

Inverse Universe

The Inverse Universe completely reimagines the original color for something new.



8299B4



9DC1EB



8482B4



505459



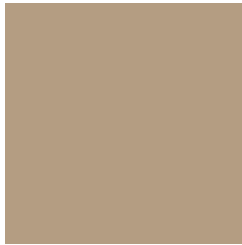
004699



000C1A

Previews

White Background



This preview shows how the Hex color B49D82 looks on a white background.

Color Contrast Check

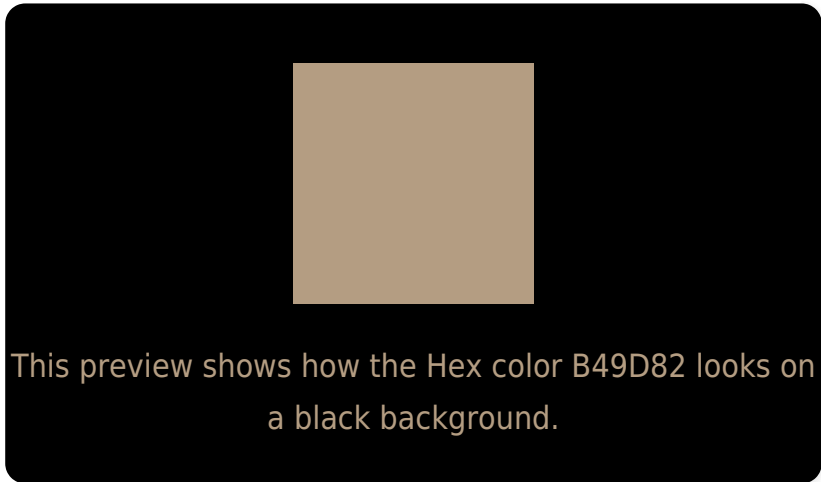
Large Text (above 18pt) WCAG AA × Fail

Any Text WCAG AA × Fail

Large Text (above 18pt) WCAG AAA × Fail

Any Text WCAG AAA × Fail

Black Background



Color Contrast Check

Large Text (above 18pt) WCAG AA ✓ Pass

Any Text WCAG AA ✓ Pass

Large Text (above 18pt) WCAG AAA ✓ Pass

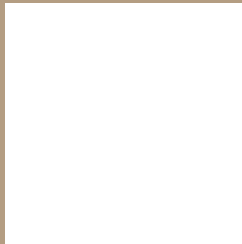
Any Text WCAG AAA ✓ Pass

If you want to check with other color combinations, try the [Color Contrast Checker](#).

Hex B49D82 Background



This preview shows how black text looks on a background with the Hex color B49D82.

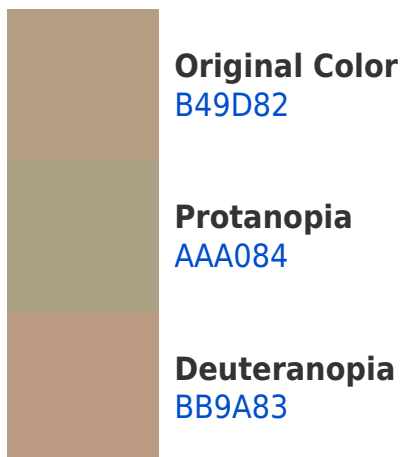


This preview shows how white text looks on a background with the Hex color B49D82.

Color Blindness Simulation

Color vision deficiency is a very complex topic, and I could not describe the different causes any better than Wikipedia does, so if you want to learn more, you should check out their [article about color blindness](#).

Dichromacy





Tritanopia
B898A4

Trichromacy



Original Color
B49D82

Protanomaly
AE9F83

Deuteranomaly
B89B83

Tritanomaly
B79A98

Monochromacy



Original Color
B49D82

Achromatopsia
A1A1A1

Achromatomaly
A8A096

CSS Examples

Text

The CSS property to change the color of the text to Hex B49D82 is called "color". The color property can be set on classes, ids or directly on the HTML element.

This example shows how text in the color #B49D82 looks like.

```
.text, #text, p{  
    color:#B49D82  
}
```

If you want to add a text shadow in that color use the text-shadow property, you can generate a text shadow directly with our [CSS Text Shadow Generator](#).

Here you see how black text with a 4 pixel #B49D82 colored shadow looks like.

```
.shadow{ text-shadow: 4px 4px 2px #B49D82
}
```

Border

The CSS property to change the border of an element to Hex B49D82 is called "border". The border property can be set on classes, ids or directly on the HTML element.

This example shows the color as border, it can be applied via the CSS property "border" or "border-color".

```
.border, #border, table{ border:4px solid
#B49D82 }
```

If only the border color should be changed use the property `border-color`.

```
.border{ border-color:#B49D82 }
```

If you want to add a box shadow in that color use:

Here you see how a box with a 4 pixel #B49D82 colored shadow looks like.

```
.boxshadow{ -moz-box-shadow:4px 4px 4px  
4px #B49D82; -webkit-box-shadow:4px 4px  
4px 4px #B49D82; box-shadow:4px 4px 4px  
4px #B49D82 }
```

Background

The CSS property to change the background color of an element to Hex B49D82 is called "background". The background property can be set on classes, ids or directly on the HTML element.

```
.background, #background, body{  
background:#B49D82 }
```

If only the background color should be changed can be used:

```
.background{ background-color:#B49D82 }
```

This example shows the color as background, it is applied via the CSS property "background".

To optimize and compress your CSS code, you can use our [online CSS compressor and optimizer](#) based on csstidy. If you want to create a linear or radial gradient as background or border, check our [CSS Gradient Generator](#).

Hey! You found this booklet interesting? Support Converting Colors with the new Membership Option!

The pro membership hides all ads, plus gives you double the colors in the color bucket, and more awesome pro features!

[Learn more, Memberships starting at \\$2.50/m!](#)

**Follow me
on Twitter!**

@ConvertingColor