

Converting Colors

Hex(B4A0A3)

Have a look what the booklet for
Hex(B4A0A3) contains.

Hex(B4A0A3)	3
<i>Conversions</i>	4
<i>Details</i>	6
<i>Harmonies</i>	11
<i>Previews</i>	23
<i>Color Blindness Simulation</i>	26
<i>CSS Examples</i>	29

Color

Hex(B4A0A3)

Conversions

Conversions Part 1

Format	Color
Hex	B4A0A3
RGB	180, 160, 163
RGB Percent	71%, 63%, 64%
CMY	0.2941, 0.3725, 0.3608
CMYK	0.00, 0.11, 0.09, 0.29
HSL	351°, 12%, 67%
HSV	351°, 11%, 71%
XYZ	38.0041, 37.4893, 39.8835
YIQ	166.3220, 10.9570, 5.1730

Conversions

Conversions Part 2

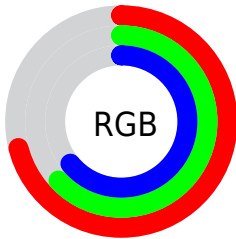
Format	Color
RYB	180, 160, 163
Decimal	11837603
CIELab	67.64, 7.83, 1.11
CIELCh	68, 7.906, 8.077
Yxy	37.4893, 0.3294, 0.3249
Android (android.graphics.Color)	4290027683 (0xFFB4A0A3)
YUV	166.3220, -1.6377, 11.9956
Hunter-Lab	61.2285, 3.6438, 4.2392

Details

The Hex color **B4A0A3** is a light color, and the websafe version is hex **999999**. A complement of this color would be **A0B4B1**, and the grayscale version is **A6A6A6**.

A 20% lighter version of the original color is **ECD7DA**, and **7F6D6F** is the 20% darker color. If you saturate the color by 10%, you get **B48E94**, and if you desaturate by 10%, it is **B4B2B2**.

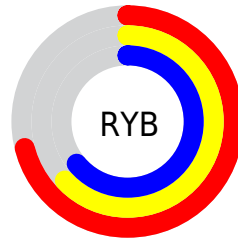
Distribution



Red (71%)

Green (63%)

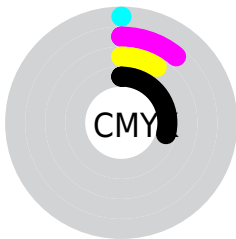
Blue (64%)



Red (71%)

Yellow (63%)

Blue (64%)

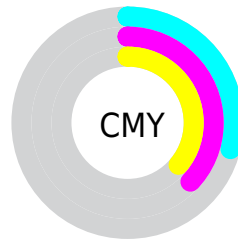


Cyan (0%)

Magenta (11%)

Yellow (9%)

Black (29%)



Cyan (29%)

Magenta (37%)

Yellow (36%)

Brightness & Saturation Gradients

These gradients show how the Hex color B4A0A3 changes by changing the brightness by 10 percent. The first figure shows a shift by +10% for each color and the second figure -10%.

Similar to the brightness gradients but the following saturation gradients show a change of the Hex color B4A0A3 by changing the saturation by 10% instead.



B4A0A3



B4A0A3

FFFFFF



998689



ECD7DA



7F6D6F



FFF3F6



665457



4E3D40



37272A



211315



000000



B4A0A3



B4A0A3



B48E94



B4B2B2

 B47C84

 B4C4C2

 B46A75

 B4D6D1

 B45866

 B4E8E0

 B44656

 B4FAF0

 B43447

 B4FFFF

 B42238

 B41029

 B4001B

Harmonies

Analogous

The Analogous color harmony consists of three colors that are next to each other on the color wheel.



B0A1AA



B4A0A3



B4A19C

Triad

The Triadic color harmony groups three colors that are evenly spaced from another and form a triangle on the color wheel.



B4A0A3



A0A799



98A7B2

Complementary

The Complementary color scheme is a pair of colors which are on the opposite of each other on the color wheel.



B4A0A3



A0B4B1

Split Complementary

Split-complementary colors differ from the complementary color scheme. The scheme consists of three colors, the original color and two neighbors of the complement color.



94A9AD



B4A0A3



99A99F

Square

The Square scheme is like the rectangle color scheme, but the four colors are evenly spaced on the color wheel.



B4A0A3



A9A597



94A9A6



A0A5B3

Rectangle

The Rectangle color scheme consists of four colors that form a rectangle on the color wheel.



B4A0A3



B2A299



94A9A6



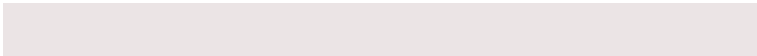
96A8B1

Sweetspot

The Sweet Spot groups the original color and five complimentary colors.



B4A0A3



EBE4E5



B1A0B4



757171



F5F5F5



757575

Same Dimension

The Same Dimension uses a secret algorithm to generate beautiful new colors.



B4A0A3



EBCCD1



B4A7A0



595052



990017



1A0004

Inverse Universe

The Inverse Universe completely reimagines the original color for something new.



B4A0A3



EBCCD1



A0ADB4



595052



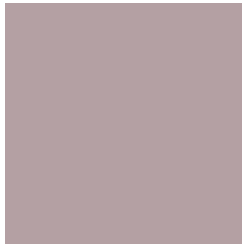
990017



1A0004

Previews

White Background



This preview shows how the Hex color B4A0A3 looks on a white background.

Color Contrast Check

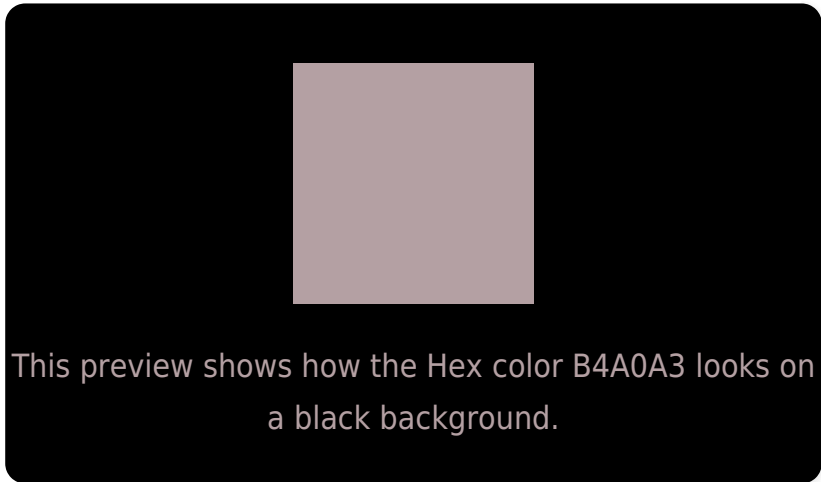
Large Text (above 18pt) WCAG AA × Fail

Any Text WCAG AA × Fail

Large Text (above 18pt) WCAG AAA × Fail

Any Text WCAG AAA × Fail

Black Background



Color Contrast Check

Large Text (above 18pt) WCAG AA ✓ Pass

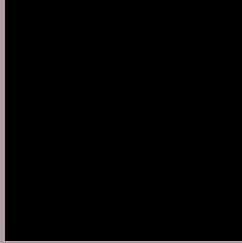
Any Text WCAG AA ✓ Pass

Large Text (above 18pt) WCAG AAA ✓ Pass

Any Text WCAG AAA ✓ Pass

If you want to check with other color combinations, try the [Color Contrast Checker](#).

Hex B4A0A3 Background



This preview shows how black text looks on a background with the Hex color B4A0A3.



This preview shows how white text looks on a background with the Hex color B4A0A3.

Color Blindness Simulation

Color vision deficiency is a very complex topic, and I could not describe the different causes any better than Wikipedia does, so if you want to learn more, you should check out their [article about color blindness](#).

Dichromacy



Original Color
B4A0A3

Protanopia
A8A4A5

Deuteranopia
B5A0A3

Trichromacy



Original Color
B4A0A3

Protanomaly
ACA3A4

Deuteranomaly
B5A0A3

Tritanomaly
B59FA8

Monochromacy



Original Color
B4A0A3

Achromatopsia
A6A6A6

Achromatomaly
ABA4A5

CSS Examples

Text

The CSS property to change the color of the text to Hex B4A0A3 is called "color". The color property can be set on classes, ids or directly on the HTML element.

This example shows how text in the color #B4A0A3 looks like.

```
.text, #text, p{  
    color:#B4A0A3  
}
```

If you want to add a text shadow in that color use the text-shadow property, you can generate a text shadow directly with our [CSS Text Shadow Generator](#).

Here you see how black text with a 4 pixel #B4A0A3 colored shadow looks like.

```
.shadow{ text-shadow: 4px 4px 2px #B4A0A3
}
```

Border

The CSS property to change the border of an element to Hex B4A0A3 is called "border". The border property can be set on classes, ids or directly on the HTML element.

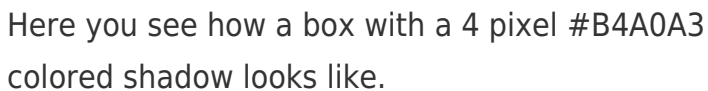
This example shows the color as border, it can be applied via the CSS property "border" or "border-color".

```
.border, #border, table{ border:4px solid
#B4A0A3 }
```

If only the border color should be changed use the property `border-color`.

```
.border{ border-color:#B4A0A3 }
```

If you want to add a box shadow in that color use:



Here you see how a box with a 4 pixel `#B4A0A3` colored shadow looks like.

```
.boxshadow{ -moz-box-shadow:4px 4px 4px  
4px #B4A0A3; -webkit-box-shadow:4px 4px  
4px 4px #B4A0A3; box-shadow:4px 4px 4px  
4px #B4A0A3 }
```

Background

The CSS property to change the background color of an element to Hex B4A0A3 is called "background". The background property can be set on classes, ids or directly on the HTML element.

```
.background, #background, body{  
background:#B4A0A3 }
```

If only the background color should be changed can be used:

```
.background{ background-color:#B4A0A3 }
```

This example shows the color as background, it is applied via the CSS property "background".

To optimize and compress your CSS code, you can use our [online CSS compressor and optimizer](#) based on csstidy. If you want to create a linear or radial gradient as background or border, check our [CSS Gradient Generator](#).

Hey! You found this booklet interesting? Support Converting Colors with the new Membership Option!

The pro membership hides all ads, plus gives you double the colors in the color bucket, and more awesome pro features!

[Learn more, Memberships starting at \\$2.50/m!](#)

**Follow me
on Twitter!**

@ConvertingColor