

# Converting Colors

Hex(B4A0A9)

Have a look what the booklet for  
Hex(B4A0A9) contains.

<b>Hex(B4A0A9)</b> .....	3
<i><b>Conversions</b></i> .....	4
<i><b>Details</b></i> .....	6
<i><b>Harmonies</b></i> .....	11
<i><b>Previews</b></i> .....	23
<i><b>Color Blindness Simulation</b></i> .....	26
<i><b>CSS Examples</b></i> .....	29

# **Color**

**Hex(B4A0A9)**

# Conversions

## Conversions Part 1

Format	Color
Hex	B4A0A9
RGB	180, 160, 169
RGB Percent	71%, 63%, 66%
CMY	0.2941, 0.3725, 0.3373
CMYK	0.00, 0.11, 0.06, 0.29
HSL	333°, 12%, 67%
HSV	333°, 11%, 71%
XYZ	38.5546, 37.7095, 42.7827
YIQ	167.0060, 9.0310, 7.0390

# Conversions

## Conversions Part 2

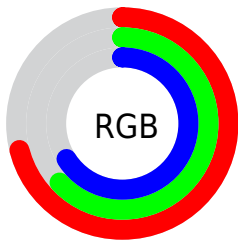
<b>Format</b>	<b>Color</b>
<b>RYB</b>	180, 160, 169
Decimal	11837609
CIELab	67.81, 8.89, -1.99
CIELCh	68, 9.114, 347.362
Yxy	37.7095, 0.3239, 0.3168
Android (android.graphics.Color)	4290027689 (0xFFB4A0A9)
YUV	167.0060, 0.9830, 11.3957
Hunter-Lab	61.4080, 4.6059, 1.6785

# Details

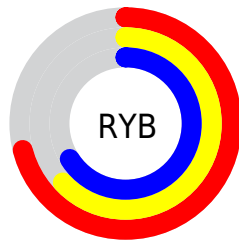
The Hex color **B4A0A9** is a light color, and the websafe version is hex **999999**. A complement of this color would be **A0B4AB**, and the grayscale version is **A7A7A7**.

A 20% lighter version of the original color is **ECD7E0**, and **7F6D75** is the 20% darker color. If you saturate the color by 10%, you get **B48E9F**, and if you desaturate by 10%, it is **B4B2B3**.

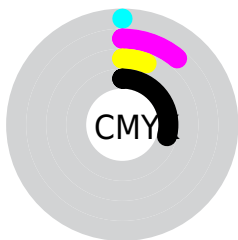
# Distribution



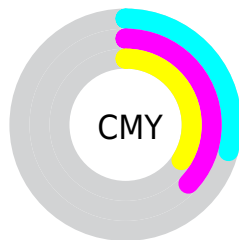
- Red (71%)
- Green (63%)
- Blue (66%)



- Red (71%)
- Yellow (63%)
- Blue (66%)



- Cyan (0%)
- Magenta (11%)
- Yellow (6%)
- Black (29%)



- Cyan (29%)
- Magenta (37%)
- Yellow (34%)

# Brightness & Saturation Gradients

These gradients show how the Hex color B4A0A9 changes by changing the brightness by 10 percent. The first figure shows a shift by +10% for each color and the second figure -10%.

Similar to the brightness gradients but the following saturation gradients show a change of the Hex color B4A0A9 by changing the saturation by 10% instead.



 B4A0A9

 B4A0A9

FFFFFF

 99868F

 ECD7E0

 7F6D75

 FFF3FD

 66545C

 4E3D45

 37272F

 21131A

 000000

 B4A0A9

 B4A0A9

 B48E9F

 B4B2B3

 B47C95

 B4C4BD

 B46A8B

 B4D6C7

 B45881

 B4E8D1

 B44677

 B4FADB

 B4346E

 B4FFE4

 B42264

 B4FFEE

 B4105A

 B4FFF8

 B40051

 B4FFFF

# Harmonies

## Analogous

The Analogous color harmony consists of three colors that are next to each other on the color wheel.



ADA2B0



B4A0A9



B7A0A1

# Triad

The Triadic color harmony groups three colors that are evenly spaced from another and form a triangle on the color wheel.



B4A0A9



A7A696



92A9B1

# Complementary

The Complementary color scheme is a pair of colors which are on the opposite of each other on the color wheel.



B4A0A9



A0B4AB

# Split Complementary

Split-complementary colors differ from the complementary color scheme. The scheme consists of three colors, the original color and two neighbors of the complement color.



91AAAA



B4A0A9



9DA89A

# Square

The Square scheme is like the rectangle color scheme, but the four colors are evenly spaced on the color wheel.



B4A0A9



B0A395



95AAA1



99A7B5

# Rectangle

The Rectangle color scheme consists of four colors that form a rectangle on the color wheel.



B4A0A9



B7A09C



95AAA1



91AAAF



# Sweetspot

The Sweet Spot groups the original color and five complimentary colors.



B4A0A9



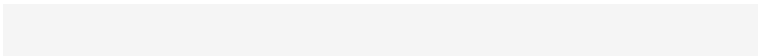
EBE4E7



ABA0B4



757173



F5F5F5



757575



# Same Dimension

The Same Dimension uses a secret algorithm to generate beautiful new colors.



B4A0A9



EBCCDA



B4A1A0



595054



990045



1A000B



# Inverse Universe

The Inverse Universe completely reimagines the original color for something new.



B4A0A9



EBCCDA



A0B3B4



595054



990045

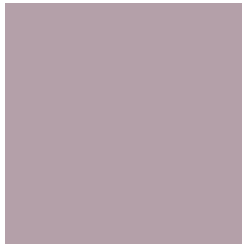


1A000B



# Previews

## White Background



This preview shows how the Hex color B4A0A9 looks on a white background.

## Color Contrast Check

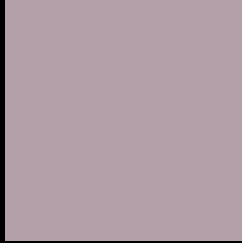
Large Text (above 18pt) WCAG AA × Fail

Any Text WCAG AA × Fail

Large Text (above 18pt) WCAG AAA × Fail

Any Text WCAG AAA × Fail

# Black Background



This preview shows how the Hex color B4A0A9 looks on a black background.

## Color Contrast Check

Large Text (above 18pt) WCAG AA ✓ Pass

Any Text WCAG AA ✓ Pass

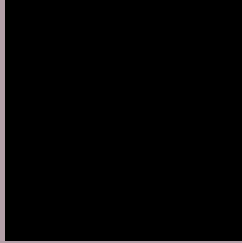
Large Text (above 18pt) WCAG AAA ✓ Pass

Any Text WCAG AAA ✓ Pass

If you want to check with other color combinations, try the [Color Contrast Checker](#).



## Hex B4A0A9 Background



This preview shows how black text looks on a background with the Hex color B4A0A9.

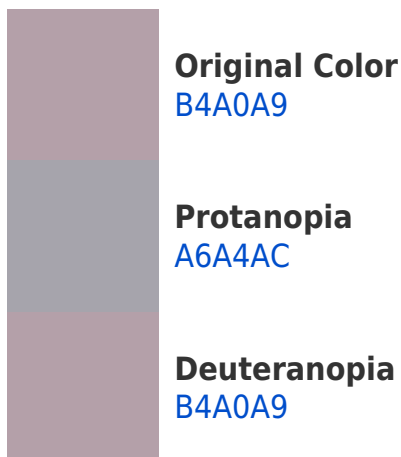


This preview shows how white text looks on a background with the Hex color B4A0A9.

# Color Blindness Simulation

Color vision deficiency is a very complex topic, and I could not describe the different causes any better than Wikipedia does, so if you want to learn more, you should check out their [article about color blindness](#).

## Dichromacy





**Tritanopia**  
B4A0AC

# Trichromacy



**Original Color**  
B4A0A9

**Protanomaly**  
ABA3AB

**Deuteranomaly**  
B4A0A9

**Tritanomaly**  
B4A0AB

# Monochromacy



**Original Color**  
B4A0A9

**Achromatopsia**  
A7A7A7

**Achromatomaly**  
ACA4A8

# CSS Examples

## Text

The CSS property to change the color of the text to Hex B4A0A9 is called "color". The color property can be set on classes, ids or directly on the HTML element.

This example shows how text in the color #B4A0A9 looks like.

```
.text, #text, p{  
    color:#B4A0A9  
}
```

If you want to add a text shadow in that color use the text-shadow property, you can generate a text shadow directly with our [CSS Text Shadow Generator](#).

Here you see how black text with a 4 pixel #B4A0A9 colored shadow looks like.

```
.shadow{ text-shadow: 4px 4px 2px #B4A0A9
}
```

## Border

The CSS property to change the border of an element to Hex B4A0A9 is called "border". The border property can be set on classes, ids or directly on the HTML element.

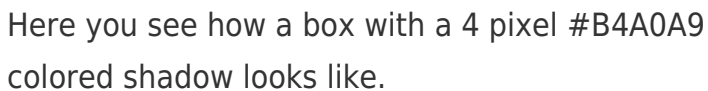
This example shows the color as border, it can be applied via the CSS property "border" or "border-color".

```
.border, #border, table{ border:4px solid
#B4A0A9 }
```

If only the border color should be changed use the property `border-color`.

```
.border{ border-color:#B4A0A9 }
```

If you want to add a box shadow in that color use:



Here you see how a box with a 4 pixel #B4A0A9 colored shadow looks like.

```
.boxshadow{ -moz-box-shadow:4px 4px 4px  
4px #B4A0A9; -webkit-box-shadow:4px 4px  
4px 4px #B4A0A9; box-shadow:4px 4px 4px  
4px #B4A0A9 }
```

# Background

The CSS property to change the background color of an element to Hex B4A0A9 is called "background". The background property can be set on classes, ids or directly on the HTML element.

```
.background, #background, body{  
background:#B4A0A9 }
```

If only the background color should be changed can be used:

```
.background{ background-color:#B4A0A9 }
```

This example shows the color as background, it is applied via the CSS property "background".

To optimize and compress your CSS code, you can use our [online CSS compressor and optimizer](#) based on csstidy. If you want to create a linear or radial gradient as background or border, check our [CSS Gradient Generator](#).



Hey! You found this booklet interesting? Support Converting Colors with the new Membership Option!

The pro membership hides all ads, plus gives you double the colors in the color bucket, and more awesome pro features!

**[Learn more, Memberships starting at \\$2.50/m!](#)**

**Follow me  
on Twitter!**

@ConvertingColor