

Converting Colors

Hex(B4A1A1)

Have a look what the booklet for
Hex(B4A1A1) contains.

Hex(B4A1A1)	3
<i>Conversions</i>	4
<i>Details</i>	6
<i>Harmonies</i>	11
<i>Previews</i>	23
<i>Color Blindness Simulation</i>	26
<i>CSS Examples</i>	29

Color

Hex(B4A1A1)

Conversions

Conversions Part 1

Format	Color
Hex	B4A1A1
RGB	180, 161, 161
RGB Percent	71%, 63%, 63%
CMY	0.2941, 0.3686, 0.3686
CMYK	0.00, 0.11, 0.11, 0.29
HSL	0°, 11%, 67%
HSV	0°, 11%, 71%
XYZ	38.0003, 37.7662, 39.0050
YIQ	166.6810, 11.3240, 4.0280

Conversions

Conversions Part 2

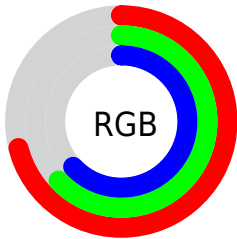
Format	Color
RYB	180, 161, 161
Decimal	11837857
CIELab	67.85, 6.93, 2.52
CIELCh	68, 7.375, 20.010
Yxy	37.7662, 0.3311, 0.3291
Android (android.graphics.Color)	4290027937 (0xFFB4A1A1)
YUV	166.6810, -2.8007, 11.6808
Hunter-Lab	61.4542, 2.8307, 5.3866

Details

The Hex color **B4A1A1** is a light color, and the websafe version is hex **999999**. A complement of this color would be **A1B4B4**, and the grayscale version is **A7A7A7**.

A 20% lighter version of the original color is **ECD8D8**, and **7F6D6E** is the 20% darker color. If you saturate the color by 10%, you get **B48F8F**, and if you desaturate by 10%, it is **B4B3B3**.

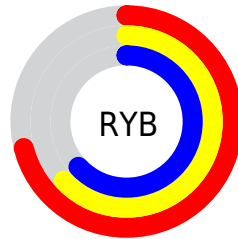
Distribution



Red (71%)

Green (63%)

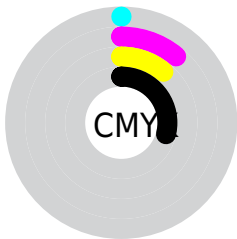
Blue (63%)



Red (71%)

Yellow (63%)

Blue (63%)

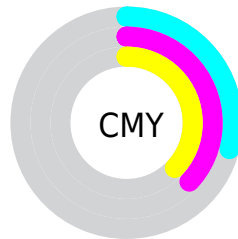


Cyan (0%)

Magenta (11%)

Yellow (11%)

Black (29%)



Cyan (29%)

Magenta (37%)

Yellow (37%)

Brightness & Saturation Gradients

These gradients show how the Hex color B4A1A1 changes by changing the brightness by 10 percent. The first figure shows a shift by +10% for each color and the second figure -10%.

Similar to the brightness gradients but the following saturation gradients show a change of the Hex color B4A1A1 by changing the saturation by 10% instead.



B4A1A1



B4A1A1

FFFFFF



998787



ECD8D8



7F6D6E



FFF4F4



665555



4E3E3E



372828



211414



000000



B4A1A1



B4A1A1



B48F8F



B4B3B3

 B47D7D

 B4C5C5

 B46B6B

 B4D7D7

 B45959

 B4E9E9

 B44747

 B4FBFB

 B43535

 B4FFFF

 B42323

 B41111

 B40000

Harmonies

Analogous

The Analogous color harmony consists of three colors that are next to each other on the color wheel.



B2A1A8



B4A1A1



B2A29B

Triad

The Triadic color harmony groups three colors that are evenly spaced from another and form a triangle on the color wheel.



B4A1A1



9EA89D



9CA7B2

Complementary

The Complementary color scheme is a pair of colors which are on the opposite of each other on the color wheel.



B4A1A1



A1B4B4

Split Complementary

Split-complementary colors differ from the complementary color scheme. The scheme consists of three colors, the original color and two neighbors of the complement color.



97A8AF



B4A1A1



98A9A3

Square

The Square scheme is like the rectangle color scheme, but the four colors are evenly spaced on the color wheel.



B4A1A1



A6A699



95A9AA



A4A4B2

Rectangle

The Rectangle color scheme consists of four colors that form a rectangle on the color wheel.



B4A1A1



AFA399



95A9AA



9AA7B2

Sweetspot

The Sweet Spot groups the original color and five complimentary colors.



B4A1A1



EBE4E4



B4A1B4



757171



F5F5F5



757575

Same Dimension

The Same Dimension uses a secret algorithm to generate beautiful new colors.



B4A1A1



EBCCCC



B4ABA1



595050



990000



1A0000

Inverse Universe

The Inverse Universe completely reimagines the original color for something new.



A1B4B4



CCEBEB



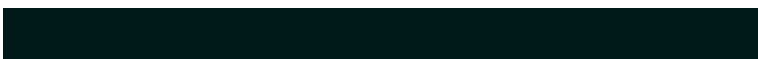
A1ABB4



505959



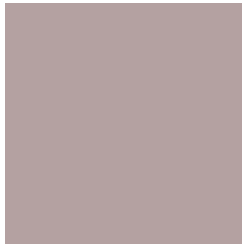
009999



001A1A

Previews

White Background



This preview shows how the Hex color B4A1A1 looks on a white background.

Color Contrast Check

Large Text (above 18pt) WCAG AA × Fail

Any Text WCAG AA × Fail

Large Text (above 18pt) WCAG AAA × Fail

Any Text WCAG AAA × Fail

Black Background



This preview shows how the Hex color B4A1A1 looks on a black background.

Color Contrast Check

Large Text (above 18pt) WCAG AA ✓ Pass

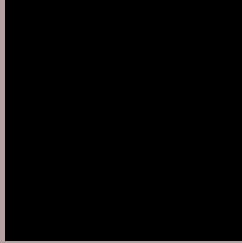
Any Text WCAG AA ✓ Pass

Large Text (above 18pt) WCAG AAA ✓ Pass

Any Text WCAG AAA ✓ Pass

If you want to check with other color combinations, try the [Color Contrast Checker](#).

Hex B4A1A1 Background



This preview shows how black text looks on a background with the Hex color B4A1A1.

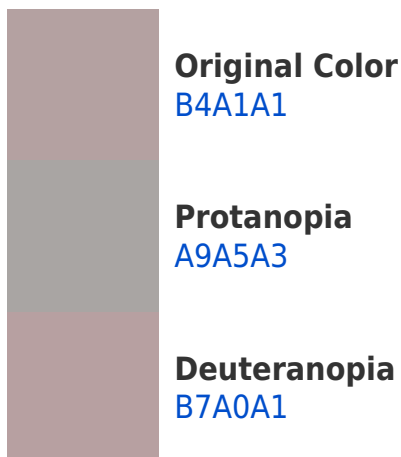


This preview shows how white text looks on a background with the Hex color B4A1A1.

Color Blindness Simulation

Color vision deficiency is a very complex topic, and I could not describe the different causes any better than Wikipedia does, so if you want to learn more, you should check out their [article about color blindness](#).

Dichromacy



Trichromacy



Original Color
B4A1A1

Protanomaly
ADA4A2

Deuteranomaly
B6A0A1

Tritanomaly
B5A0A8

Monochromacy



Original Color
B4A1A1

Achromatopsia
A7A7A7

Achromatomaly
ACA5A5

CSS Examples

Text

The CSS property to change the color of the text to Hex B4A1A1 is called "color". The color property can be set on classes, ids or directly on the HTML element.

This example shows how text in the color #B4A1A1 looks like.

```
.text, #text, p{  
    color:#B4A1A1  
}
```

If you want to add a text shadow in that color use the text-shadow property, you can generate a text shadow directly with our [CSS Text Shadow Generator](#).

Here you see how black text with a 4 pixel #B4A1A1 colored shadow looks like.

```
.shadow{ text-shadow: 4px 4px 2px #B4A1A1
}
```

Border

The CSS property to change the border of an element to Hex B4A1A1 is called "border". The border property can be set on classes, ids or directly on the HTML element.

This example shows the color as border, it can be applied via the CSS property "border" or "border-color".

```
.border, #border, table{ border:4px solid
#B4A1A1 }
```

If only the border color should be changed use the property `border-color`.

```
.border{ border-color:#B4A1A1 }
```

If you want to add a box shadow in that color use:

Here you see how a box with a 4 pixel #B4A1A1 colored shadow looks like.

```
.boxshadow{ -moz-box-shadow:4px 4px 4px  
4px #B4A1A1; -webkit-box-shadow:4px 4px  
4px 4px #B4A1A1; box-shadow:4px 4px 4px  
4px #B4A1A1 }
```

Background

The CSS property to change the background color of an element to Hex B4A1A1 is called "background". The background property can be set on classes, ids or directly on the HTML element.

```
.background, #background, body{  
background:#B4A1A1 }
```

If only the background color should be changed can be used:

```
.background{ background-color:#B4A1A1 }
```

This example shows the color as background, it is applied via the CSS property "background".

To optimize and compress your CSS code, you can use our [online CSS compressor and optimizer](#) based on csstidy. If you want to create a linear or radial gradient as background or border, check our [CSS Gradient Generator](#).

Hey! You found this booklet interesting? Support Converting Colors with the new Membership Option!

The pro membership hides all ads, plus gives you double the colors in the color bucket, and more awesome pro features!

[Learn more, Memberships starting at \\$2.50/m!](#)

**Follow me
on Twitter!**

@ConvertingColor