

Converting Colors

Hex(B5767A)

Have a look what the booklet for
Hex(B5767A) contains.

Hex(B5767A)	3
<i>Conversions</i>	4
<i>Details</i>	6
<i>Harmonies</i>	11
<i>Previews</i>	23
<i>Color Blindness Simulation</i>	26
<i>CSS Examples</i>	29

Color

Hex(B5767A)

Conversions

Conversions Part 1

Format	Color
Hex	B5767A
RGB	181, 118, 122
RGB Percent	71%, 46%, 48%
CMY	0.2902, 0.5373, 0.5216
CMYK	0.00, 0.35, 0.33, 0.29
HSL	356°, 30%, 59%
HSV	356°, 35%, 71%
XYZ	29.0473, 24.1858, 21.5497
YIQ	137.2930, 36.2640, 14.6000

Conversions

Conversions Part 2

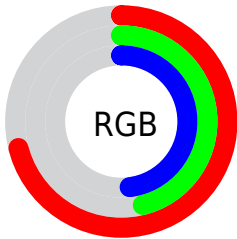
Format	Color
R_{YB}	181, 118, 122
Decimal	11892346
CIE _{Lab}	56.27, 25.27, 8.06
CIE _{LCh}	56, 26.520, 17.684
Yxy	24.1858, 0.3884, 0.3234
Android (android.graphics.Color)	4290082426 (0xFFB5767A)
YUV	137.2930, -7.5394, 38.3310
Hunter-Lab	49.1790, 19.3668, 8.4451

Details

The Hex color **B5767A** is a dark color, and the websafe version is hex **996666**. A complement of this color would be **76B5B1**, and the grayscale version is **898989**.

A 20% lighter version of the original color is **EEABAE**, and **7E4549** is the 20% darker color. If you saturate the color by 10%, you get **B56469**, and if you desaturate by 10%, it is **B5888B**.

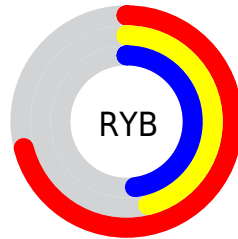
Distribution



Red (71%)

Green (46%)

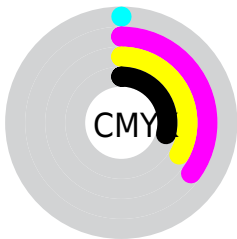
Blue (48%)



Red (71%)

Yellow (46%)

Blue (48%)

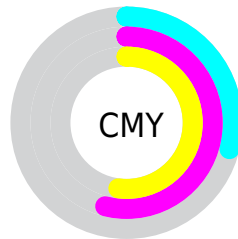


Cyan (0%)

Magenta (35%)

Yellow (33%)

Black (29%)



Cyan (29%)

Magenta (54%)

Yellow (52%)

Brightness & Saturation Gradients

These gradients show how the Hex color B5767A changes by changing the brightness by 10 percent. The first figure shows a shift by +10% for each color and the second figure -10%.

Similar to the brightness gradients but the following saturation gradients show a change of the Hex color B5767A by changing the saturation by 10% instead.

 B5767A

 B5767A

FFFFFF

 995D61

 EEABAE

 7E4549

 FFC6CA

 642D33

 FFE2E6

 4A161E

 320005

 150000

 000000

 B5767A

 B5767A

 B56469

 B5888B

 B55258

 B59A9C

 B54047

 B5ACAD

 B52E36

 B5BEBE

 B51B25

 B5D1CF

 B50914

 B5E3E0

 B5000B

 B5F5F1

 B5FFFF

Harmonies

Analogous

The Analogous color harmony consists of three colors that are next to each other on the color wheel.



AE7791



B5767A



AF7B66

Triad

The Triadic color harmony groups three colors that are evenly spaced from another and form a triangle on the color wheel.



B5767A



6F9067



5A8CB3

Complementary

The Complementary color scheme is a pair of colors which are on the opposite of each other on the color wheel.



B5767A



76B5B1

Split Complementary

Split-complementary colors differ from the complementary color scheme. The scheme consists of three colors, the original color and two neighbors of the complement color.



3E91A8



B5767A



54937C

Square

The Square scheme is like the rectangle color scheme, but the four colors are evenly spaced on the color wheel.



B5767A



898A5B



3E9494



7D84B3

Rectangle

The Rectangle color scheme consists of four colors that form a rectangle on the color wheel.



B5767A



A6805D



3E9494



4F8EB1

Sweetspot

The Sweet Spot groups the original color and five complimentary colors.



B5767A



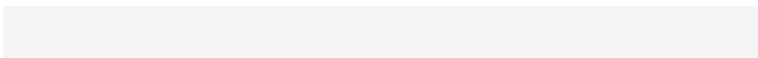
EBD3D5



B176B5



756768



F5F5F5



757575

Same Dimension

The Same Dimension uses a secret algorithm to generate beautiful new colors.



B5767A



EB888E



B59176



595051



99000A



1A0002

Inverse Universe

The Inverse Universe completely reimagines the original color for something new.



B5767A



EB888E



769AB5



595051



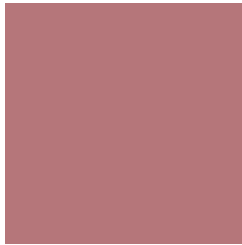
99000A



1A0002

Previews

White Background



This preview shows how the Hex color B5767A looks on a white background.

Color Contrast Check

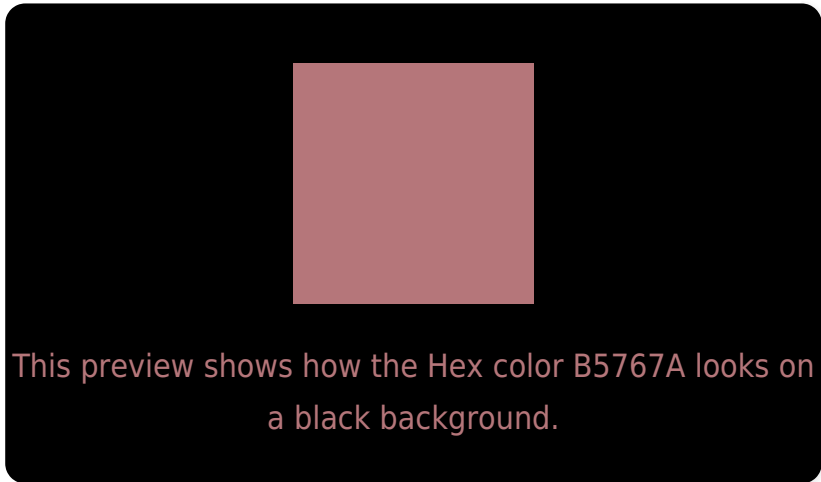
Large Text (above 18pt) WCAG AA ✓ Pass

Any Text WCAG AA ✗ Fail

Large Text (above 18pt) WCAG AAA ✗ Fail

Any Text WCAG AAA ✗ Fail

Black Background



Color Contrast Check

Large Text (above 18pt) WCAG AA ✓ Pass

Any Text WCAG AA ✓ Pass

Large Text (above 18pt) WCAG AAA ✓ Pass

Any Text WCAG AAA × Fail

If you want to check with other color combinations, try the [Color Contrast Checker](#).

Hex B5767A Background



This preview shows how black text looks on a background with the Hex color B5767A.



This preview shows how white text looks on a background with the Hex color B5767A.

Color Blindness Simulation

Color vision deficiency is a very complex topic, and I could not describe the different causes any better than Wikipedia does, so if you want to learn more, you should check out their [article about color blindness](#).

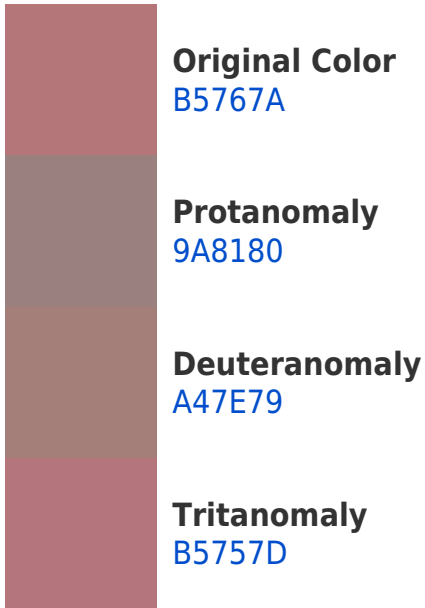
Dichromacy



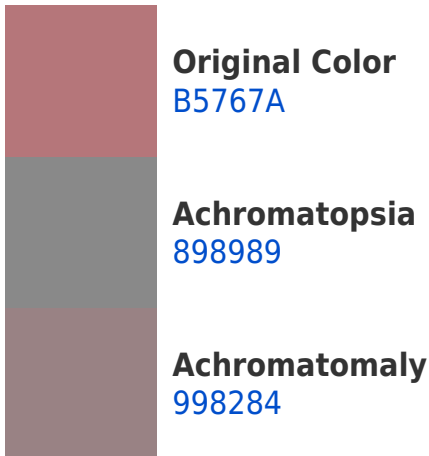


Tritanopia
B5757E

Trichromacy



Monochromacy



CSS Examples

Text

The CSS property to change the color of the text to Hex B5767A is called "color". The color property can be set on classes, ids or directly on the HTML element.

This example shows how text in the color #B5767A looks like.

```
.text, #text, p{  
    color:#B5767A  
}
```

If you want to add a text shadow in that color use the text-shadow property, you can generate a text shadow directly with our [CSS Text Shadow Generator](#).

Here you see how black text with a 4 pixel #B5767A colored shadow looks like.

```
.shadow{ text-shadow: 4px 4px 2px #B5767A
}
```

Border

The CSS property to change the border of an element to Hex B5767A is called "border". The border property can be set on classes, ids or directly on the HTML element.

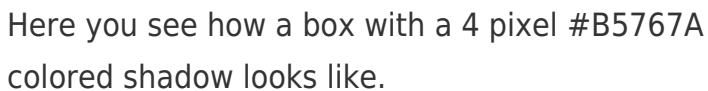
This example shows the color as border, it can be applied via the CSS property "border" or "border-color".

```
.border, #border, table{ border:4px solid
#B5767A }
```

If only the border color should be changed use the property `border-color`.

```
.border{ border-color:#B5767A }
```

If you want to add a box shadow in that color use:



Here you see how a box with a 4 pixel #B5767A colored shadow looks like.

```
.boxshadow{ -moz-box-shadow:4px 4px 4px  
4px #B5767A; -webkit-box-shadow:4px 4px  
4px 4px #B5767A; box-shadow:4px 4px 4px  
4px #B5767A }
```

Background

The CSS property to change the background color of an element to Hex B5767A is called "background". The background property can be set on classes, ids or directly on the HTML element.

```
.background, #background, body{  
background:#B5767A }
```

If only the background color should be changed can be used:

```
.background{ background-color:#B5767A }
```

This example shows the color as background, it is applied via the CSS property "background".

To optimize and compress your CSS code, you can use our [online CSS compressor and optimizer](#) based on csstidy. If you want to create a linear or radial gradient as background or border, check our [CSS Gradient Generator](#).

Hey! You found this booklet interesting? Support Converting Colors with the new Membership Option!

The pro membership hides all ads, plus gives you double the colors in the color bucket, and more awesome pro features!

[Learn more, Memberships starting at \\$2.50/m!](#)

**Follow me
on Twitter!**

@ConvertingColor