

Converting Colors

Hex(B57951)

Have a look what the booklet for
Hex(B57951) contains.

Hex(B57951)	3
<i>Conversions</i>	4
<i>Details</i>	6
<i>Harmonies</i>	11
<i>Previews</i>	23
<i>Color Blindness Simulation</i>	26
<i>CSS Examples</i>	29

Color

Hex(B57951)

Conversions

Conversions Part 1

Format	Color
Hex	B57951
RGB	181, 121, 81
RGB Percent	71%, 47%, 32%
CMY	0.2902, 0.5255, 0.6824
CMYK	0.00, 0.33, 0.55, 0.29
HSL	24°, 40%, 51%
HSV	24°, 55%, 71%
XYZ	27.3786, 24.0926, 10.9919
YIQ	134.3800, 48.6000, 0.2800

Conversions

Conversions Part 2

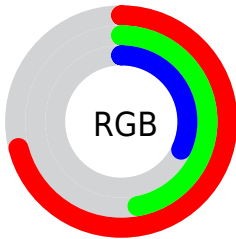
Format	Color
RYB	181, 148, 81
Decimal	11893073
CIELab	56.18, 19.09, 31.32
CIELCh	56, 36.683, 58.639
Yxy	24.0926, 0.4383, 0.3857
Android (android.graphics.Color)	4290083153 (0xFFB57951)
YUV	134.3800, -26.3163, 40.8857
Hunter-Lab	49.0842, 13.6680, 21.0815

Details

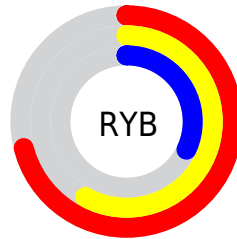
The Hex color **B57951** is a dark color, and the websafe version is hex **996633**. A complement of this color would be **518DB5**, and the grayscale version is **878787**.

A 20% lighter version of the original color is **EFAE83**, and **7D4823** is the 20% darker color. If you saturate the color by 10%, you get **B56E3F**, and if you desaturate by 10%, it is **B58463**.

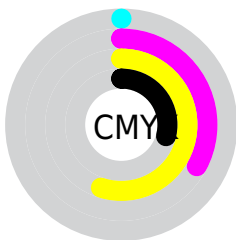
Distribution



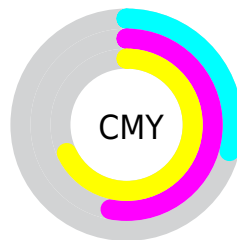
- Red (71%)
- Green (47%)
- Blue (32%)



- Red (71%)
- Yellow (58%)
- Blue (32%)



- Cyan (0%)
- Magenta (33%)
- Yellow (55%)
- Black (29%)



- Cyan (29%)
- Magenta (53%)
- Yellow (68%)

Brightness & Saturation Gradients

These gradients show how the Hex color B57951 changes by changing the brightness by 10 percent. The first figure shows a shift by +10% for each color and the second figure -10%.

Similar to the brightness gradients but the following saturation gradients show a change of the Hex color B57951 by changing the saturation by 10% instead.

 B57951

 B57951

FFFFFF

 996039

 EFAE83

 7D4823

 FFC99D

 62310C

 FFE5B8

 481B00

 FFFFD4

 2D0600

 FFFFF1

 070000

 000000

 B57951

 B57951

 B56E3F

 B58463

 B5632D

 B58F75

 B5581B

 B59A87

 B54E09

 B5A499

 B54800

 B5AFAC

 B5BABE

 B5C5D0

 B5D0E2

 B5DBF4

Harmonies

Analogous

The Analogous color harmony consists of three colors that are next to each other on the color wheel.



C3706A



B57951



9C8446

Triad

The Triadic color harmony groups three colors that are evenly spaced from another and form a triangle on the color wheel.



B57951



1B9784



877FBF

Complementary

The Complementary color scheme is a pair of colors which are on the opposite of each other on the color wheel.



B57951



518DB5

Split Complementary

Split-complementary colors differ from the complementary color scheme. The scheme consists of three colors, the original color and two neighbors of the complement color.



518AC6



B57951



0097A4

Square

The Square scheme is like the rectangle color scheme, but the four colors are evenly spaced on the color wheel.



B57951



559464



0093BC



AD73A8

Rectangle

The Rectangle color scheme consists of four colors that form a rectangle on the color wheel.



B57951



878B49



0093BC



7783C3

Sweetspot

The Sweet Spot groups the original color and five complimentary colors.



B57951



EBD3C3



B5518D



75675E



F5F5F5



757575

Same Dimension

The Same Dimension uses a secret algorithm to generate beautiful new colors.



B57951



EB8E50



B5AB51



595450



993D00



1A0A00

Inverse Universe

The Inverse Universe completely reimagines the original color for something new.



518DB5



50ADEB



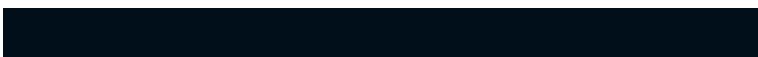
515BB5



505659



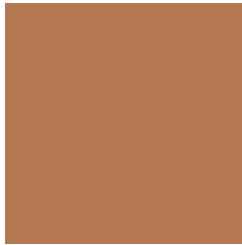
005C99



000F1A

Previews

White Background



This preview shows how the Hex color B57951 looks on a white background.

Color Contrast Check

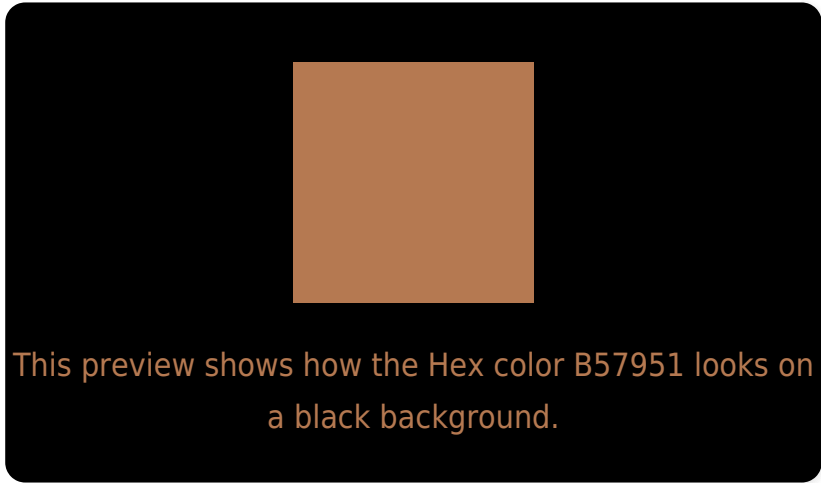
Large Text (above 18pt) WCAG AA ✓ Pass

Any Text WCAG AA × Fail

Large Text (above 18pt) WCAG AAA × Fail

Any Text WCAG AAA × Fail

Black Background



Color Contrast Check

Large Text (above 18pt) WCAG AA ✓ Pass

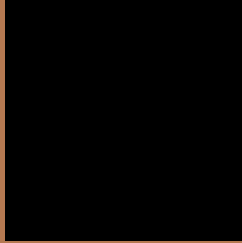
Any Text WCAG AA ✓ Pass

Large Text (above 18pt) WCAG AAA ✓ Pass

Any Text WCAG AAA × Fail

If you want to check with other color combinations, try the [Color Contrast Checker](#).

Hex B57951 Background



This preview shows how black text looks on a background with the Hex color B57951.



This preview shows how white text looks on a background with the Hex color B57951.

Color Blindness Simulation

Color vision deficiency is a very complex topic, and I could not describe the different causes any better than Wikipedia does, so if you want to learn more, you should check out their [article about color blindness](#).

Dichromacy



Original Color
B57951

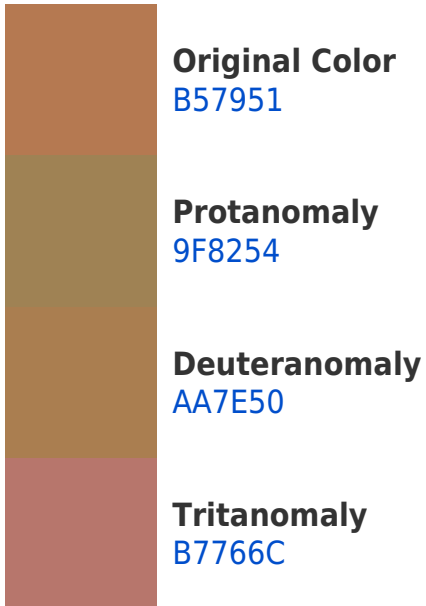
Protanopia
938756

Deuteranopia
A4814F

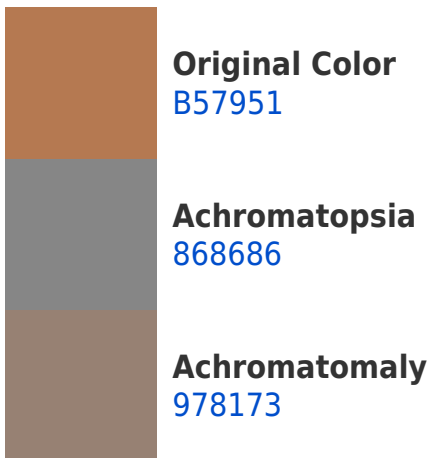


Tritanopia
B8747C

Trichromacy



Monochromacy



CSS Examples

Text

The CSS property to change the color of the text to Hex B57951 is called "color". The color property can be set on classes, ids or directly on the HTML element.

This example shows how text in the color #B57951 looks like.

```
.text, #text, p{  
    color:#B57951  
}
```

If you want to add a text shadow in that color use the text-shadow property, you can generate a text shadow directly with our [CSS Text Shadow Generator](#).

Here you see how black text with a 4 pixel #B57951 colored shadow looks like.

```
.shadow{ text-shadow: 4px 4px 2px #B57951  
}
```

Border

The CSS property to change the border of an element to Hex B57951 is called "border". The border property can be set on classes, ids or directly on the HTML element.

This example shows the color as border, it can be applied via the CSS property "border" or "border-color".

```
.border, #border, table{ border:4px solid  
#B57951 }
```

If only the border color should be changed use the property `border-color`.

```
.border{ border-color:#B57951 }
```

If you want to add a box shadow in that color use:

Here you see how a box with a 4 pixel #B57951 colored shadow looks like.

```
.boxshadow{ -moz-box-shadow:4px 4px 4px  
4px #B57951; -webkit-box-shadow:4px 4px  
4px 4px #B57951; box-shadow:4px 4px 4px  
4px #B57951 }
```

Background

The CSS property to change the background color of an element to Hex B57951 is called "background". The background property can be set on classes, ids or directly on the HTML element.

```
.background, #background, body{  
background:#B57951 }
```

If only the background color should be changed can be used:

```
.background{ background-color:#B57951 }
```

This example shows the color as background, it is applied via the CSS property "background".

To optimize and compress your CSS code, you can use our [online CSS compressor and optimizer](#) based on csstidy. If you want to create a linear or radial gradient as background or border, check our [CSS Gradient Generator](#).

Hey! You found this booklet interesting? Support Converting Colors with the new Membership Option!

The pro membership hides all ads, plus gives you double the colors in the color bucket, and more awesome pro features!

[Learn more, Memberships starting at \\$2.50/m!](#)

**Follow me
on Twitter!**

@ConvertingColor