

Converting Colors

Hex(B5797F)

Have a look what the booklet for
Hex(B5797F) contains.

Hex(B5797F)	3
<i>Conversions</i>	4
<i>Details</i>	6
<i>Harmonies</i>	11
<i>Previews</i>	23
<i>Color Blindness Simulation</i>	26
<i>CSS Examples</i>	29

Color

Hex(B5797F)

Conversions

Conversions Part 1

Format	Color
Hex	B5797F
RGB	181, 121, 127
RGB Percent	71%, 47%, 50%
CMY	0.2902, 0.5255, 0.5020
CMYK	0.00, 0.33, 0.30, 0.29
HSL	354°, 29%, 59%
HSV	354°, 33%, 71%
XYZ	29.7242, 25.0308, 23.3435
YIQ	139.6240, 33.8340, 14.5860

Conversions

Conversions Part 2

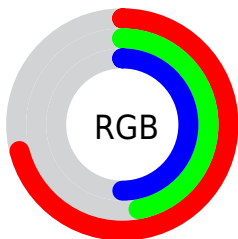
Format	Color
R_{YB}	181, 121, 127
Decimal	11893119
CIE _{Lab}	57.11, 24.28, 6.34
CIE _{LCh}	57, 25.091, 14.642
Yxy	25.0308, 0.3806, 0.3205
Android (android.graphics.Color)	4290083199 (0xFFB5797F)
YUV	139.6240, -6.2236, 36.2868
Hunter-Lab	50.0308, 18.4961, 7.3579

Details

The Hex color **B5797F** is a dark color, and the websafe version is hex **996666**. A complement of this color would be **79B5AF**, and the grayscale version is **8C8C8C**.

A 20% lighter version of the original color is **EEAEB4**, and **7E484E** is the 20% darker color. If you saturate the color by 10%, you get **B5676F**, and if you desaturate by 10%, it is **B58B8F**.

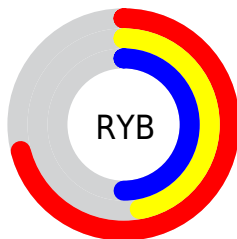
Distribution



Red (71%)

Green (47%)

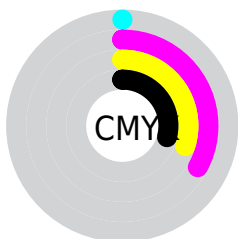
Blue (50%)



Red (71%)

Yellow (47%)

Blue (50%)

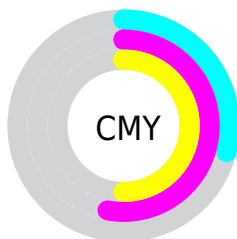


Cyan (0%)

Magenta (33%)

Yellow (30%)

Black (29%)



Cyan (29%)

Magenta (53%)

Yellow (50%)

Brightness & Saturation Gradients

These gradients show how the Hex color B5797F changes by changing the brightness by 10 percent. The first figure shows a shift by +10% for each color and the second figure -10%.

Similar to the brightness gradients but the following saturation gradients show a change of the Hex color B5797F by changing the saturation by 10% instead.

 B5797F

 B5797F

FFFFFF

 996066

 EEAEB4

 7E484E

 FFC9CF

 643037

 FFE6EB

 4B1A22

 33030C

 180001

 000000

 B5797F

 B5797F

 B5676F

 B58B8F

 B5555E

 B59DA0

 B5434E

 B5AFB0

 B5313E

 B5C1C0

 B51F2E

 B5D4D0

 B50C1D

 B5E6E1

 B50012

 B5F8F1

 B5FFFF

Harmonies

Analogous

The Analogous color harmony consists of three colors that are next to each other on the color wheel.



AD7A95



B5797F



B17D6B

Triad

The Triadic color harmony groups three colors that are evenly spaced from another and form a triangle on the color wheel.



B5797F



759169



5D8EB3

Complementary

The Complementary color scheme is a pair of colors which are on the opposite of each other on the color wheel.



B5797F



79B5AF

Split Complementary

Split-complementary colors differ from the complementary color scheme. The scheme consists of three colors, the original color and two neighbors of the complement color.



4693A7



B5797F



5C947D

Square

The Square scheme is like the rectangle color scheme, but the four colors are evenly spaced on the color wheel.



B5797F



8E8B5E



489593



7C87B3

Rectangle

The Rectangle color scheme consists of four colors that form a rectangle on the color wheel.



B5797F



A88162



489593



5390B0

Sweetspot

The Sweet Spot groups the original color and five complimentary colors.



B5797F



EBD3D5



AF79B5



756769



F5F5F5



757575

Same Dimension

The Same Dimension uses a secret algorithm to generate beautiful new colors.



B5797F



EB8D96



B59179



595051



99000F



1A0003

Inverse Universe

The Inverse Universe completely reimagines the original color for something new.



B5797F



EB8D96



799DB5



595051



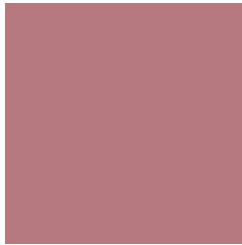
99000F



1A0003

Previews

White Background



This preview shows how the Hex color B5797F looks on a white background.

Color Contrast Check

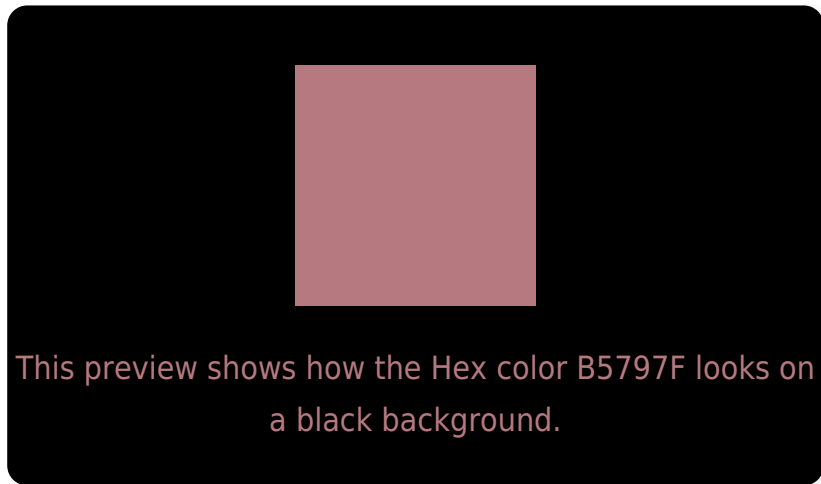
Large Text (above 18pt) WCAG AA ✓ Pass

Any Text WCAG AA × Fail

Large Text (above 18pt) WCAG AAA × Fail

Any Text WCAG AAA × Fail

Black Background



Color Contrast Check

Large Text (above 18pt) WCAG AA ✓ Pass

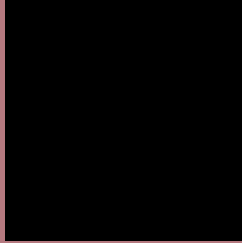
Any Text WCAG AA ✓ Pass

Large Text (above 18pt) WCAG AAA ✓ Pass

Any Text WCAG AAA × Fail

If you want to check with other color combinations, try the [Color Contrast Checker](#).

Hex B5797F Background



This preview shows how black text looks on a background with the Hex color B5797F.

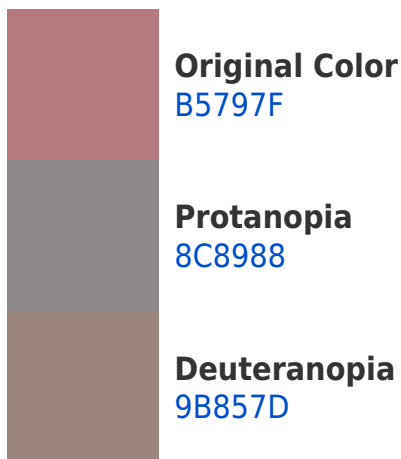


This preview shows how white text looks on a background with the Hex color B5797F.

Color Blindness Simulation

Color vision deficiency is a very complex topic, and I could not describe the different causes any better than Wikipedia does, so if you want to learn more, you should check out their [article about color blindness](#).

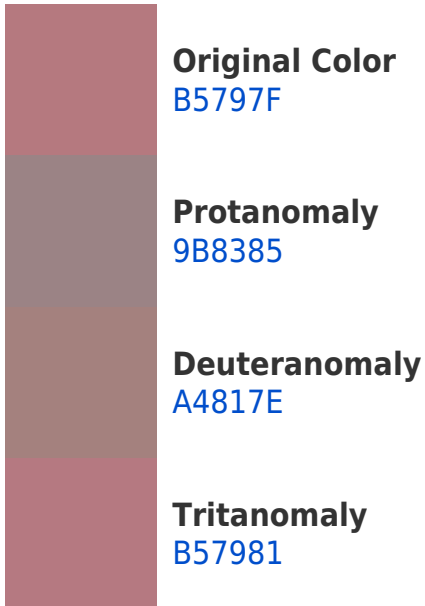
Dichromacy





Tritanopia
B57982

Trichromacy



Monochromacy



CSS Examples

Text

The CSS property to change the color of the text to Hex B5797F is called "color". The color property can be set on classes, ids or directly on the HTML element.

This example shows how text in the color #B5797F looks like.

```
.text, #text, p{  
    color:#B5797F  
}
```

If you want to add a text shadow in that color use the text-shadow property, you can generate a text shadow directly with our [CSS Text Shadow Generator](#).

Here you see how black text with a 4 pixel #B5797F colored shadow looks like.

```
.shadow{ text-shadow: 4px 4px 2px #B5797F
}
```

Border

The CSS property to change the border of an element to Hex B5797F is called "border". The border property can be set on classes, ids or directly on the HTML element.

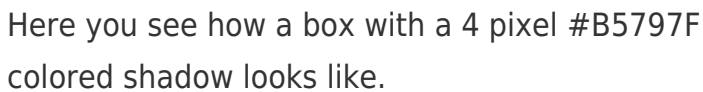
This example shows the color as border, it can be applied via the CSS property "border" or "border-color".

```
.border, #border, table{ border:4px solid
#B5797F }
```

If only the border color should be changed use the property `border-color`.

```
.border{ border-color:#B5797F }
```

If you want to add a box shadow in that color use:



Here you see how a box with a 4 pixel #B5797F colored shadow looks like.

```
.boxshadow{ -moz-box-shadow:4px 4px 4px  
4px #B5797F; -webkit-box-shadow:4px 4px  
4px 4px #B5797F; box-shadow:4px 4px 4px  
4px #B5797F }
```

Background

The CSS property to change the background color of an element to Hex B5797F is called "background". The background property can be set on classes, ids or directly on the HTML element.

```
.background, #background, body{  
background:#B5797F }
```

If only the background color should be changed can be used:

```
.background{ background-color:#B5797F }
```

This example shows the color as background, it is applied via the CSS property "background".

To optimize and compress your CSS code, you can use our [online CSS compressor and optimizer](#) based on csstidy. If you want to create a linear or radial gradient as background or border, check our [CSS Gradient Generator](#).

Hey! You found this booklet interesting? Support Converting Colors with the new Membership Option!

The pro membership hides all ads, plus gives you double the colors in the color bucket, and more awesome pro features!

[Learn more, Memberships starting at \\$2.50/m!](#)

**Follow me
on Twitter!**

@ConvertingColor