

Converting Colors

Hex(B57C53)

Have a look what the booklet for
Hex(B57C53) contains.

Hex(B57C53)	3
<i>Conversions</i>	4
<i>Details</i>	6
<i>Harmonies</i>	11
<i>Previews</i>	23
<i>Color Blindness Simulation</i>	26
<i>CSS Examples</i>	29

Color

Hex(B57C53)

Conversions

Conversions Part 1

Format	Color
Hex	B57C53
RGB	181, 124, 83
RGB Percent	71%, 49%, 33%
CMY	0.2902, 0.5137, 0.6745
CMYK	0.00, 0.31, 0.54, 0.29
HSL	25°, 40%, 52%
HSV	25°, 54%, 71%
XYZ	27.8250, 24.8636, 11.5162
YIQ	136.3690, 47.1330, -0.6670

Conversions

Conversions Part 2

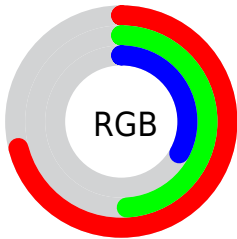
Format	Color
R_{YB}	181, 153, 83
Decimal	11893843
CIE Lab	56.94, 17.59, 31.18
CIE LCh	57, 35.800, 60.568
Yxy	24.8636, 0.4334, 0.3873
Android (android.graphics.Color)	4290083923 (0xFFB57C53)
YUV	136.3690, -26.3109, 39.1414
Hunter-Lab	49.8634, 12.3465, 21.2110

Details

The Hex color **B57C53** is a dark color, and the websafe version is hex **996633**. A complement of this color would be **538CB5**, and the grayscale version is **898989**.

A 20% lighter version of the original color is **EFB185**, and **7D4B25** is the 20% darker color. If you saturate the color by 10%, you get **B57141**, and if you desaturate by 10%, it is **B58765**.

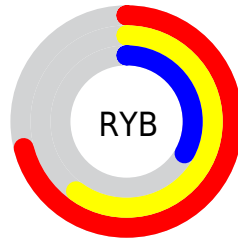
Distribution



Red (71%)

Green (49%)

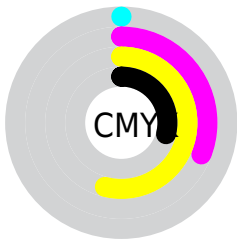
Blue (33%)



Red (71%)

Yellow (60%)

Blue (33%)

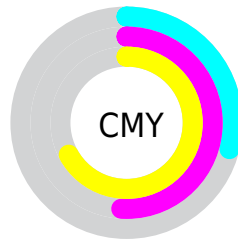


Cyan (0%)

Magenta (31%)

Yellow (54%)

Black (29%)



Cyan (29%)

Magenta (51%)

Yellow (67%)

Brightness & Saturation Gradients

These gradients show how the Hex color B57C53 changes by changing the brightness by 10 percent. The first figure shows a shift by +10% for each color and the second figure -10%.

Similar to the brightness gradients but the following saturation gradients show a change of the Hex color B57C53 by changing the saturation by 10% instead.

 B57C53

 B57C53

FFFFFF

 99633B

 EFB185

 7D4B25

 FFCCA0

 62340E

 FFE8BB

 481E00

 FFFFD7

 2E0900

 FFFFF3

 0B0000

 000000

 B57C53

 B57C53

 B57141

 B58765

 B5672F

 B59177

 B55C1D

 B59C89

 B5520B

 B5A69B

 B54C00

 B5B1AE

 B5BBC0

 B5C6D2

 B5D0E4

 B5DBF6

Harmonies

Analogous

The Analogous color harmony consists of three colors that are next to each other on the color wheel.



C3736B



B57C53



9C8749

Triad

The Triadic color harmony groups three colors that are evenly spaced from another and form a triangle on the color wheel.



B57C53



209988



8C80BE

Complementary

The Complementary color scheme is a pair of colors which are on the opposite of each other on the color wheel.



B57C53



538CB5

Split Complementary

Split-complementary colors differ from the complementary color scheme. The scheme consists of three colors, the original color and two neighbors of the complement color.



598CC7



B57C53



0098A7

Square

The Square scheme is like the rectangle color scheme, but the four colors are evenly spaced on the color wheel.



B57C53



559669



0094BE



B075A8

Rectangle

The Rectangle color scheme consists of four colors that form a rectangle on the color wheel.



B57C53



878D4D



0094BE



7D84C3

Sweetspot

The Sweet Spot groups the original color and five complimentary colors.



B57C53



EBD5C5



B5538C



75685F



F5F5F5



757575

Same Dimension

The Same Dimension uses a secret algorithm to generate beautiful new colors.



B57C53



EB9252



B5AD53



595450



994000



1A0B00

Inverse Universe

The Inverse Universe completely reimagines the original color for something new.



538CB5



52ABEB



535BB5



505659



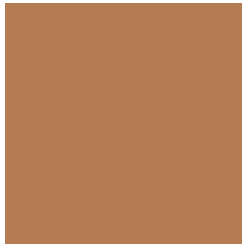
005999



000F1A

Previews

White Background



This preview shows how the Hex color B57C53 looks on a white background.

Color Contrast Check

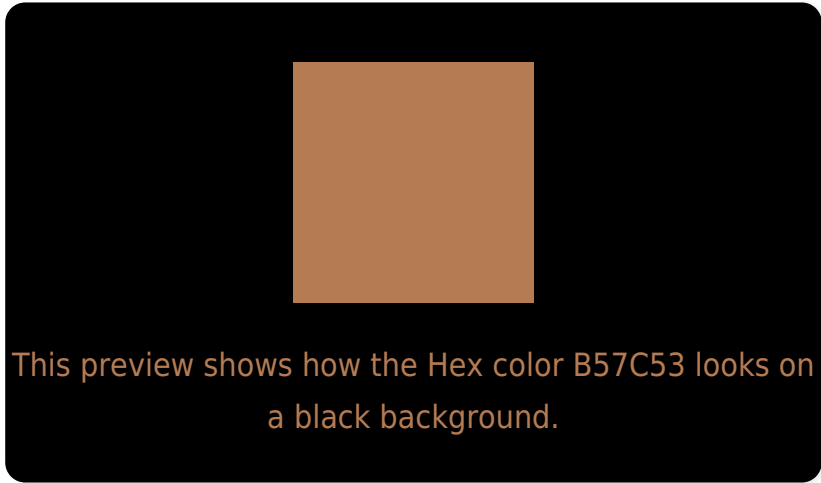
Large Text (above 18pt) WCAG AA ✓ Pass

Any Text WCAG AA × Fail

Large Text (above 18pt) WCAG AAA × Fail

Any Text WCAG AAA × Fail

Black Background



Color Contrast Check

Large Text (above 18pt) WCAG AA ✓ Pass

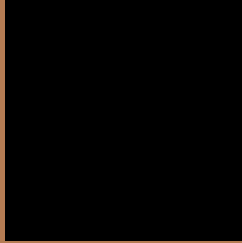
Any Text WCAG AA ✓ Pass

Large Text (above 18pt) WCAG AAA ✓ Pass

Any Text WCAG AAA × Fail

If you want to check with other color combinations, try the [Color Contrast Checker](#).

Hex B57C53 Background



This preview shows how black text looks on a background with the Hex color B57C53.




This preview shows how white text looks on a background with the Hex color B57C53.

Color Blindness Simulation

Color vision deficiency is a very complex topic, and I could not describe the different causes any better than Wikipedia does, so if you want to learn more, you should check out their [article about color blindness](#).

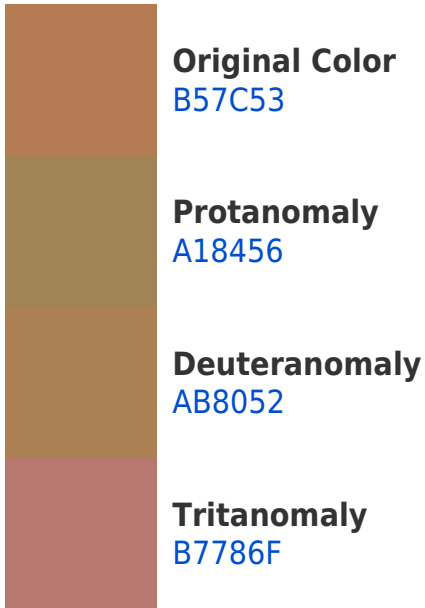
Dichromacy



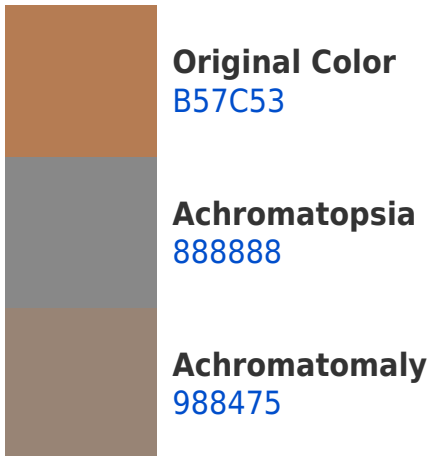


Tritanopia
B8767F

Trichromacy



Monochromacy



CSS Examples

Text

The CSS property to change the color of the text to Hex B57C53 is called "color". The color property can be set on classes, ids or directly on the HTML element.

This example shows how text in the color #B57C53 looks like.

```
.text, #text, p{  
    color:#B57C53  
}
```

If you want to add a text shadow in that color use the text-shadow property, you can generate a text shadow directly with our [CSS Text Shadow Generator](#).

Here you see how black text with a 4 pixel #B57C53 colored shadow looks like.

```
.shadow{ text-shadow: 4px 4px 2px #B57C53
}
```

Border

The CSS property to change the border of an element to Hex B57C53 is called "border". The border property can be set on classes, ids or directly on the HTML element.

This example shows the color as border, it can be applied via the CSS property "border" or "border-color".

```
.border, #border, table{ border:4px solid
#B57C53 }
```

If only the border color should be changed use the property `border-color`.

```
.border{ border-color:#B57C53 }
```

If you want to add a box shadow in that color use:

Here you see how a box with a 4 pixel #B57C53 colored shadow looks like.

```
.boxshadow{ -moz-box-shadow:4px 4px 4px  
4px #B57C53; -webkit-box-shadow:4px 4px  
4px 4px #B57C53; box-shadow:4px 4px 4px  
4px #B57C53 }
```

Background

The CSS property to change the background color of an element to Hex B57C53 is called "background". The background property can be set on classes, ids or directly on the HTML element.

```
.background, #background, body{  
background:#B57C53 }
```

If only the background color should be changed can be used:

```
.background{ background-color:#B57C53 }
```

This example shows the color as background, it is applied via the CSS property "background".

To optimize and compress your CSS code, you can use our [online CSS compressor and optimizer](#) based on csstidy. If you want to create a linear or radial gradient as background or border, check our [CSS Gradient Generator](#).

Hey! You found this booklet interesting? Support Converting Colors with the new Membership Option!

The pro membership hides all ads, plus gives you double the colors in the color bucket, and more awesome pro features!

[Learn more, Memberships starting at \\$2.50/m!](#)

**Follow me
on Twitter!**

@ConvertingColor