

# Converting Colors

Hex(B57D56)

Have a look what the booklet for  
Hex(B57D56) contains.

<b>Hex(B57D56)</b> .....	3
<b><i>Conversions</i></b> .....	4
<b><i>Details</i></b> .....	6
<b><i>Harmonies</i></b> .....	11
<b><i>Previews</i></b> .....	23
<b><i>Color Blindness Simulation</i></b> .....	26
<b><i>CSS Examples</i></b> .....	29

**Color**

**Hex(B57D56)**

# Conversions

## Conversions Part 1

<b>Format</b>	<b>Color</b>
Hex	B57D56
RGB	181, 125, 86
RGB Percent	71%, 49%, 34%
CMY	0.2902, 0.5098, 0.6627
CMYK	0.00, 0.31, 0.52, 0.29
HSL	25°, 39%, 52%
HSV	25°, 52%, 71%
XYZ	28.0694, 25.1629, 12.1816
YIQ	137.2980, 45.8950, -0.2570

# Conversions

## Conversions Part 2

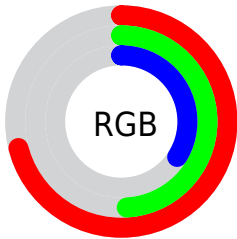
<b>Format</b>	<b>Color</b>
<b>RYB</b>	181, 152, 86
Decimal	11894102
CIELab	57.23, 17.30, 29.89
CIElCh	57, 34.542, 59.936
Yxy	25.1629, 0.4291, 0.3847
Android (android.graphics.Color)	4290084182 (0xFFB57D56)
YUV	137.2980, -25.2899, 38.3267
Hunter-Lab	50.1626, 12.0983, 20.7157

# Details

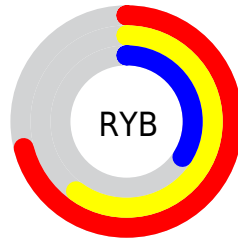
The Hex color **B57D56** is a dark color, and the websafe version is hex **CC9966**. A complement of this color would be **568EB5**, and the grayscale version is **8A8A8A**.

A 20% lighter version of the original color is **EFB288**, and **7D4C27** is the 20% darker color. If you saturate the color by 10%, you get **B57244**, and if you desaturate by 10%, it is **B58868**.

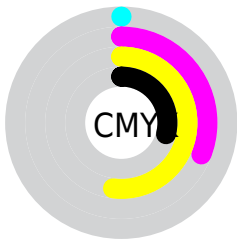
# Distribution



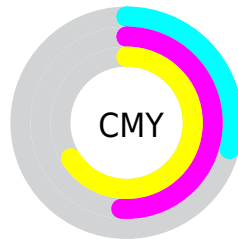
- Red (71%)
- Green (49%)
- Blue (34%)



- Red (71%)
- Yellow (60%)
- Blue (34%)



- Cyan (0%)
- Magenta (31%)
- Yellow (52%)
- Black (29%)



- Cyan (29%)
- Magenta (51%)
- Yellow (66%)

# Brightness & Saturation Gradients

These gradients show how the Hex color B57D56 changes by changing the brightness by 10 percent. The first figure shows a shift by +10% for each color and the second figure -10%.

Similar to the brightness gradients but the following saturation gradients show a change of the Hex color B57D56 by changing the saturation by 10% instead.



 B57D56

 B57D56

FFFFFF

 99643E

 EFB288

 7D4C27

 FFCDA3

 623511

 FFEABE

 491F00

 FFFFDA

 2E0A00

 FFFFF7

 0E0000

 000000

 B57D56

 B57D56

 B57244

 B58868

 B56832

 B5927A

 B55D20

 B59D8C

 B5520E

 B5A89E

 B54A00

 B5B2B1

 B5BDC3

 B5C8D5

 B5D2E7

 B5DDF9

# Harmonies

## Analogous

The Analogous color harmony consists of three colors that are next to each other on the color wheel.



C2746D



B57D56



9D884C

# Triad

The Triadic color harmony groups three colors that are evenly spaced from another and form a triangle on the color wheel.



B57D56



2B9988



8C82BE

# Complementary

The Complementary color scheme is a pair of colors which are on the opposite of each other on the color wheel.



B57D56



568EB5

# Split Complementary

Split-complementary colors differ from the complementary color scheme. The scheme consists of three colors, the original color and two neighbors of the complement color.



5B8CC5



B57D56



0099A6

# Square

The Square scheme is like the rectangle color scheme, but the four colors are evenly spaced on the color wheel.



B57D56



59976A



1894BD



AF77A8

# Rectangle

The Rectangle color scheme consists of four colors that form a rectangle on the color wheel.



B57D56



898E50



1894BD



7D85C2



# Sweetspot

The Sweet Spot groups the original color and five complimentary colors.



B57D56



EBD4C5



B5568F



75685F



F5F5F5



757575



# Same Dimension

The Same Dimension uses a secret algorithm to generate beautiful new colors.



B57D56



EB9357



B5AC56



595450



993F00



1A0A00



# Inverse Universe

The Inverse Universe completely reimagines the original color for something new.



568EB5



57AEEB



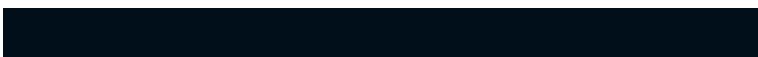
565FB5



505659



005A99

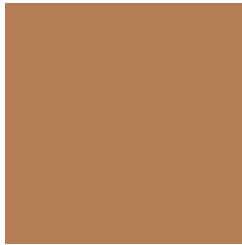


000F1A



# Previews

## White Background



This preview shows how the Hex color B57D56 looks on a white background.

## Color Contrast Check

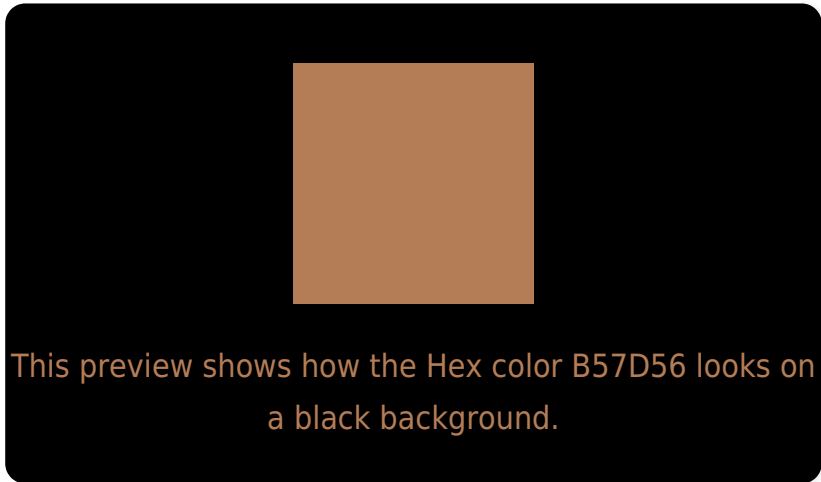
Large Text (above 18pt) WCAG AA ✓ Pass

Any Text WCAG AA × Fail

Large Text (above 18pt) WCAG AAA × Fail

Any Text WCAG AAA × Fail

# Black Background



## Color Contrast Check

Large Text (above 18pt) WCAG AA ✓ Pass

Any Text WCAG AA ✓ Pass

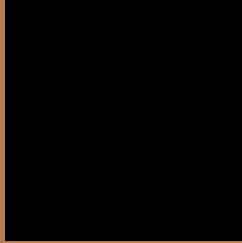
Large Text (above 18pt) WCAG AAA ✓ Pass

Any Text WCAG AAA × Fail

If you want to check with other color combinations, try the [Color Contrast Checker](#).



## Hex B57D56 Background



This preview shows how black text looks on a background with the Hex color B57D56.



This preview shows how white text looks on a background with the Hex color B57D56.

# Color Blindness Simulation

Color vision deficiency is a very complex topic, and I could not describe the different causes any better than Wikipedia does, so if you want to learn more, you should check out their [article about color blindness](#).

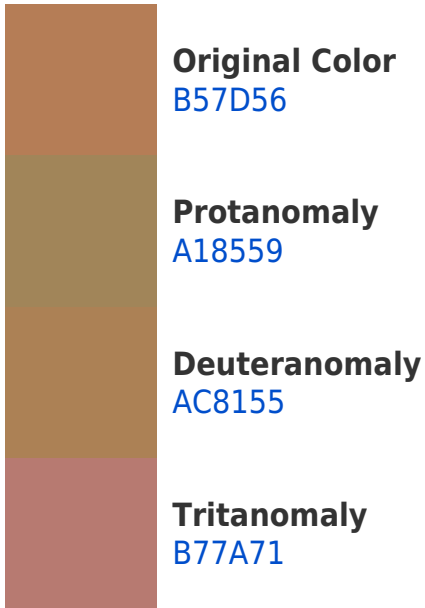
## Dichromacy



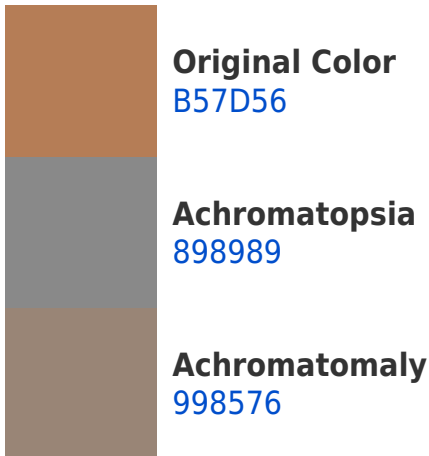


**Tritanopia**  
B87881

# Trichromacy



# Monochromacy



# CSS Examples

## Text

The CSS property to change the color of the text to Hex B57D56 is called "color". The color property can be set on classes, ids or directly on the HTML element.

This example shows how text in the color #B57D56 looks like.

```
.text, #text, p{  
    color:#B57D56  
}
```

If you want to add a text shadow in that color use the text-shadow property, you can generate a text shadow directly with our [CSS Text Shadow Generator](#).

Here you see how black text with a 4 pixel #B57D56 colored shadow looks like.

```
.shadow{ text-shadow: 4px 4px 2px #B57D56
}
```

## Border

The CSS property to change the border of an element to Hex B57D56 is called "border". The border property can be set on classes, ids or directly on the HTML element.

This example shows the color as border, it can be applied via the CSS property "border" or "border-color".

```
.border, #border, table{ border:4px solid
#B57D56 }
```

If only the border color should be changed use the property `border-color`.

```
.border{ border-color:#B57D56 }
```

If you want to add a box shadow in that color use:

Here you see how a box with a 4 pixel #B57D56 colored shadow looks like.

```
.boxshadow{ -moz-box-shadow:4px 4px 4px  
4px #B57D56; -webkit-box-shadow:4px 4px  
4px 4px #B57D56; box-shadow:4px 4px 4px  
4px #B57D56 }
```

# Background

The CSS property to change the background color of an element to Hex B57D56 is called "background". The background property can be set on classes, ids or directly on the HTML element.

```
.background, #background, body{  
background:#B57D56 }
```

If only the background color should be changed can be used:

```
.background{ background-color:#B57D56 }
```

This example shows the color as background, it is applied via the CSS property "background".

To optimize and compress your CSS code, you can use our [online CSS compressor and optimizer](#) based on csstidy. If you want to create a linear or radial gradient as background or border, check our [CSS Gradient Generator](#).



Hey! You found this booklet interesting? Support Converting Colors with the new Membership Option!

The pro membership hides all ads, plus gives you double the colors in the color bucket, and more awesome pro features!

**[Learn more, Memberships starting at \\$2.50/m!](#)**

**Follow me  
on Twitter!**

@ConvertingColor