

Converting Colors

Hex(B57F7F)

Have a look what the booklet for
Hex(B57F7F) contains.

Hex(B57F7F)	3
<i>Conversions</i>	4
<i>Details</i>	6
<i>Harmonies</i>	11
<i>Previews</i>	23
<i>Color Blindness Simulation</i>	26
<i>CSS Examples</i>	29

Color

Hex(B57F7F)

Conversions

Conversions Part 1

Format	Color
Hex	B57F7F
RGB	181, 127, 127
RGB Percent	71%, 50%, 50%
CMY	0.2902, 0.5020, 0.5020
CMYK	0.00, 0.30, 0.30, 0.29
HSL	0°, 27%, 60%
HSV	0°, 30%, 71%
XYZ	30.4762, 26.5348, 23.5941
YIQ	143.1460, 32.1840, 11.4480

Conversions

Conversions Part 2

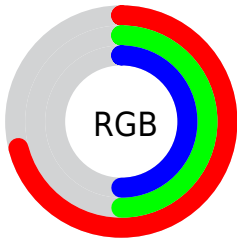
Format	Color
R_{YB}	181, 127, 127
Decimal	11894655
CIE Lab	58.54, 20.93, 8.39
CIE LCh	59, 22.546, 21.851
Yxy	26.5348, 0.3781, 0.3292
Android (android.graphics.Color)	4290084735 (0xFFB57F7F)
YUV	143.1460, -7.9600, 33.1980
Hunter-Lab	51.5119, 15.4607, 8.9016

Details

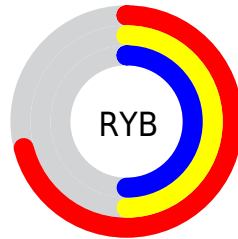
The Hex color **B57F7F** is a dark color, and the websafe version is hex **CC9999**. A complement of this color would be **7FB5B5**, and the grayscale version is **8F8F8F**.

A 20% lighter version of the original color is **EEB4B4**, and **7F4D4E** is the 20% darker color. If you saturate the color by 10%, you get **B56D6D**, and if you desaturate by 10%, it is **B59191**.

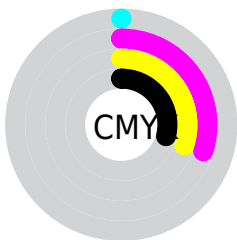
Distribution



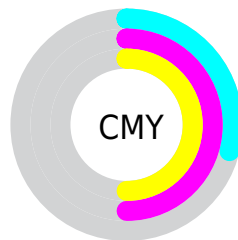
- Red (71%)
- Green (50%)
- Blue (50%)



- Red (71%)
- Yellow (50%)
- Blue (50%)



- Cyan (0%)
- Magenta (30%)
- Yellow (30%)
- Black (29%)



- Cyan (29%)
- Magenta (50%)
- Yellow (50%)

Brightness & Saturation Gradients

These gradients show how the Hex color B57F7F changes by changing the brightness by 10 percent. The first figure shows a shift by +10% for each color and the second figure -10%.

Similar to the brightness gradients but the following saturation gradients show a change of the Hex color B57F7F by changing the saturation by 10% instead.

 B57F7F

 B57F7F

FFFFFF

 996666

 EEB4B4

 7F4D4E

 FFD0CF

 653637

 FFECEB

 4B2022

 330A0C

 1C0001

 000000

 B57F7F

 B57F7F

 B56D6D

 B59191

 B55B5B

 B5A3A3

 B54949

 B5B5B5

 B53737

 B5C7C7

 B52525

 B5DADA

 B51212

 B5ECEC

 B50000

 B5FEFE

 B5FFFF

Harmonies

Analogous

The Analogous color harmony consists of three colors that are next to each other on the color wheel.



B07F93



B57F7F



AF836F

Triad

The Triadic color harmony groups three colors that are evenly spaced from another and form a triangle on the color wheel.



B57F7F



759574



6D90B3

Complementary

The Complementary color scheme is a pair of colors which are on the opposite of each other on the color wheel.



B57F7F



7FB5B5

Split Complementary

Split-complementary colors differ from the complementary color scheme. The scheme consists of three colors, the original color and two neighbors of the complement color.



5795AB



B57F7F



609887

Square

The Square scheme is like the rectangle color scheme, but the four colors are evenly spaced on the color wheel.



B57F7F



8C9068



53989B



898AB1

Rectangle

The Rectangle color scheme consists of four colors that form a rectangle on the color wheel.



B57F7F



A68768



53989B



6492B2

Sweetspot

The Sweet Spot groups the original color and five complimentary colors.



B57F7F



EBD5D5



B57FB5



756868



F5F5F5



757575

Same Dimension

The Same Dimension uses a secret algorithm to generate beautiful new colors.



B57F7F



EB9696



B59A7F



595050



990000



1A0000

Inverse Universe

The Inverse Universe completely reimagines the original color for something new.



7FB5B5



96EBEB



7F9AB5



505959



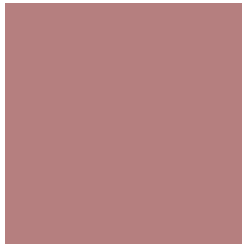
009999



001A1A

Previews

White Background



This preview shows how the Hex color B57F7F looks on a white background.

Color Contrast Check

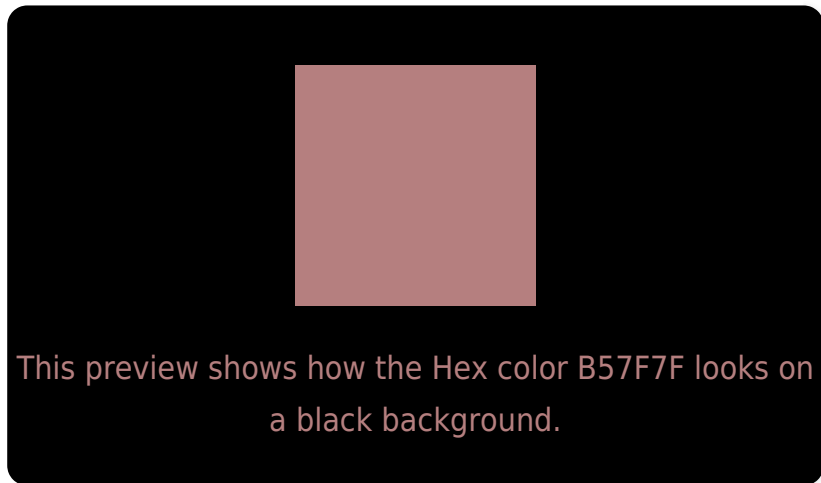
Large Text (above 18pt) WCAG AA ✓ Pass

Any Text WCAG AA ✗ Fail

Large Text (above 18pt) WCAG AAA ✗ Fail

Any Text WCAG AAA ✗ Fail

Black Background



Color Contrast Check

Large Text (above 18pt) WCAG AA ✓ Pass

Any Text WCAG AA ✓ Pass

Large Text (above 18pt) WCAG AAA ✓ Pass

Any Text WCAG AAA × Fail

If you want to check with other color combinations, try the [Color Contrast Checker](#).

Hex B57F7F Background



This preview shows how black text looks on a background with the Hex color B57F7F.

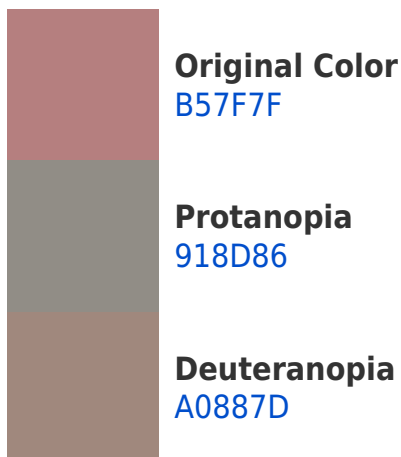


This preview shows how white text looks on a background with the Hex color B57F7F.

Color Blindness Simulation

Color vision deficiency is a very complex topic, and I could not describe the different causes any better than Wikipedia does, so if you want to learn more, you should check out their [article about color blindness](#).

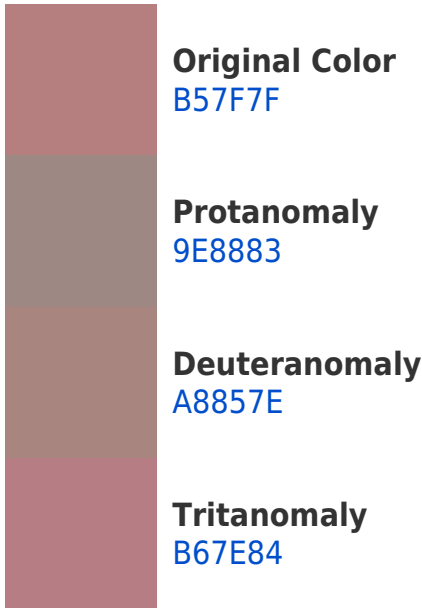
Dichromacy





Tritanopia
B67E87

Trichromacy



Monochromacy



CSS Examples

Text

The CSS property to change the color of the text to Hex B57F7F is called "color". The color property can be set on classes, ids or directly on the HTML element.

This example shows how text in the color #B57F7F looks like.

```
.text, #text, p{  
    color:#B57F7F  
}
```

If you want to add a text shadow in that color use the text-shadow property, you can generate a text shadow directly with our [CSS Text Shadow Generator](#).

Here you see how black text with a 4 pixel #B57F7F colored shadow looks like.

```
.shadow{ text-shadow: 4px 4px 2px #B57F7F
}
```

Border

The CSS property to change the border of an element to Hex B57F7F is called "border". The border property can be set on classes, ids or directly on the HTML element.

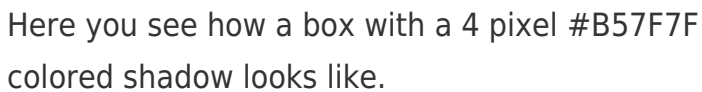
This example shows the color as border, it can be applied via the CSS property "border" or "border-color".

```
.border, #border, table{ border:4px solid
#B57F7F }
```

If only the border color should be changed use the property `border-color`.

```
.border{ border-color:#B57F7F }
```

If you want to add a box shadow in that color use:



Here you see how a box with a 4 pixel #B57F7F colored shadow looks like.

```
.boxshadow{ -moz-box-shadow:4px 4px 4px  
4px #B57F7F; -webkit-box-shadow:4px 4px  
4px 4px #B57F7F; box-shadow:4px 4px 4px  
4px #B57F7F }
```

Background

The CSS property to change the background color of an element to Hex B57F7F is called "background". The background property can be set on classes, ids or directly on the HTML element.

```
.background, #background, body{  
background:#B57F7F }
```

If only the background color should be changed can be used:

```
.background{ background-color:#B57F7F }
```

This example shows the color as background, it is applied via the CSS property "background".

To optimize and compress your CSS code, you can use our [online CSS compressor and optimizer](#) based on csstidy. If you want to create a linear or radial gradient as background or border, check our [CSS Gradient Generator](#).

Hey! You found this booklet interesting? Support Converting Colors with the new Membership Option!

The pro membership hides all ads, plus gives you double the colors in the color bucket, and more awesome pro features!

[Learn more, Memberships starting at \\$2.50/m!](#)

**Follow me
on Twitter!**

@ConvertingColor