

# Converting Colors

Hex(B5807C)

Have a look what the booklet for  
Hex(B5807C) contains.

<b>Hex(B5807C)</b> .....	3
<i><b>Conversions</b></i> .....	4
<i><b>Details</b></i> .....	6
<i><b>Harmonies</b></i> .....	11
<i><b>Previews</b></i> .....	23
<i><b>Color Blindness Simulation</b></i> .....	26
<i><b>CSS Examples</b></i> .....	29

**Color**

**Hex(B5807C)**

# Conversions

## Conversions Part 1

<b>Format</b>	<b>Color</b>
Hex	B5807C
RGB	181, 128, 124
RGB Percent	71%, 50%, 49%
CMY	0.2902, 0.4980, 0.5137
CMYK	0.00, 0.29, 0.31, 0.29
HSL	4°, 28%, 60%
HSV	4°, 31%, 71%
XYZ	30.4133, 26.7173, 22.6228
YIQ	143.3910, 32.8720, 9.9920

# Conversions

## Conversions Part 2

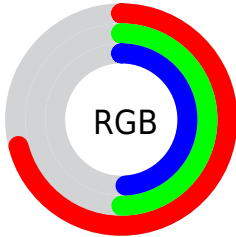
<b>Format</b>	<b>Color</b>
<b>R<sub>YB</sub></b>	181, 128, 124
Decimal	11894908
CIE Lab	58.71, 19.96, 10.36
CIE LCh	59, 22.483, 27.430
Yxy	26.7173, 0.3813, 0.3350
Android (android.graphics.Color)	4290084988 (0xFFB5807C)
YUV	143.3910, -9.5598, 32.9831
Hunter-Lab	51.6888, 14.5727, 10.2326

# Details

The Hex color **B5807C** is a dark color, and the websafe version is hex **CC9999**. A complement of this color would be **7CB1B5**, and the grayscale version is **8F8F8F**.

A 20% lighter version of the original color is **EEB5B0**, and **7F4E4B** is the 20% darker color. If you saturate the color by 10%, you get **B56F6A**, and if you desaturate by 10%, it is **B5918E**.

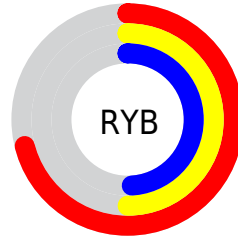
# Distribution



Red (71%)

Green (50%)

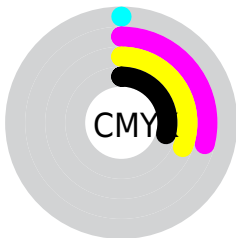
Blue (49%)



Red (71%)

Yellow (50%)

Blue (49%)

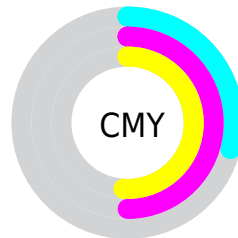


Cyan (0%)

Magenta (29%)

Yellow (31%)

Black (29%)



Cyan (29%)

Magenta (50%)

Yellow (51%)

# Brightness & Saturation Gradients

These gradients show how the Hex color B5807C changes by changing the brightness by 10 percent. The first figure shows a shift by +10% for each color and the second figure -10%.

Similar to the brightness gradients but the following saturation gradients show a change of the Hex color B5807C by changing the saturation by 10% instead.



 B5807C

 B5807C

FFFFFF

 996763

 EEB5B0

 7F4E4B

 FFD1CC

 653735

 FFEDE8

 4B211F

 330B08

 1C0001

 000000

 B5807C

 B5807C

 B56F6A

 B5918E

 B55E58

 B5A2A0

 B54E46

 B5B2B2

 B53D34

 B5C3C4

 B52C21

 B5D4D7

 B51B0F

 B5E5E9

 B50D00

 B5F6FB

 B5FFFF

# Harmonies

## Analogous

The Analogous color harmony consists of three colors that are next to each other on the color wheel.



B37F90



B5807C



AD856D

# Triad

The Triadic color harmony groups three colors that are evenly spaced from another and form a triangle on the color wheel.



B5807C



729677



7290B4

# Complementary

The Complementary color scheme is a pair of colors which are on the opposite of each other on the color wheel.



B5807C



7CB1B5

# Split Complementary

Split-complementary colors differ from the complementary color scheme. The scheme consists of three colors, the original color and two neighbors of the complement color.



5B95AE



B5807C



5D988B

# Square

The Square scheme is like the rectangle color scheme, but the four colors are evenly spaced on the color wheel.



B5807C



88926A



53989F



8E89B0

# Rectangle

The Rectangle color scheme consists of four colors that form a rectangle on the color wheel.



B5807C



A38967



53989F



6A92B3



# Sweetspot

The Sweet Spot groups the original color and five complimentary colors.



B5807C



EBD7D5



B57CB1



756968



F5F5F5



757575



# Same Dimension

The Same Dimension uses a secret algorithm to generate beautiful new colors.



B5807C



EB9891



B59C7C



595150



990B00



1A0200



# Inverse Universe

The Inverse Universe completely reimagines the original color for something new.



7CB1B5



91E4EB



7C95B5



505959



008E99

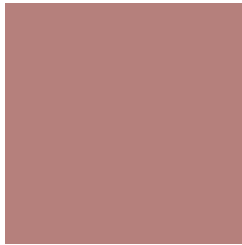


00181A



# Previews

## White Background



This preview shows how the Hex color B5807C looks on a white background.

## Color Contrast Check

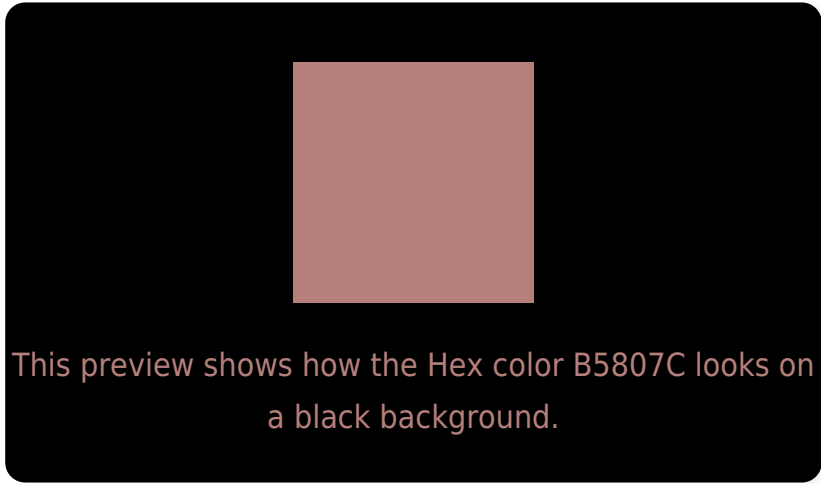
Large Text (above 18pt) WCAG AA ✓ Pass

Any Text WCAG AA × Fail

Large Text (above 18pt) WCAG AAA × Fail

Any Text WCAG AAA × Fail

# Black Background



## Color Contrast Check

Large Text (above 18pt) WCAG AA ✓ Pass

Any Text WCAG AA ✓ Pass

Large Text (above 18pt) WCAG AAA ✓ Pass

Any Text WCAG AAA × Fail

If you want to check with other color combinations, try the [Color Contrast Checker](#).



## Hex B5807C Background



This preview shows how black text looks on a background with the Hex color B5807C.



This preview shows how white text looks on a background with the Hex color B5807C.

# Color Blindness Simulation

Color vision deficiency is a very complex topic, and I could not describe the different causes any better than Wikipedia does, so if you want to learn more, you should check out their [article about color blindness](#).

## Dichromacy





**Tritanopia**  
B67E88

# Trichromacy



**Original Color**  
B5807C

**Protanomaly**  
9F8880

**Deuteranomaly**  
A9857B

**Tritanomaly**  
B67F84

# Monochromacy



**Original Color**  
B5807C

**Achromatopsia**  
8F8F8F

**Achromatomaly**  
9D8A88

# CSS Examples

## Text

The CSS property to change the color of the text to Hex B5807C is called "color". The color property can be set on classes, ids or directly on the HTML element.

This example shows how text in the color #B5807C looks like.

```
.text, #text, p{  
    color:#B5807C  
}
```

If you want to add a text shadow in that color use the text-shadow property, you can generate a text shadow directly with our [CSS Text Shadow Generator](#).

Here you see how black text with a 4 pixel #B5807C colored shadow looks like.

```
.shadow{ text-shadow: 4px 4px 2px #B5807C
}
```

## Border

The CSS property to change the border of an element to Hex B5807C is called "border". The border property can be set on classes, ids or directly on the HTML element.

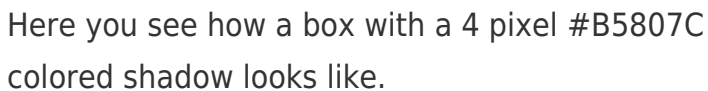
This example shows the color as border, it can be applied via the CSS property "border" or "border-color".

```
.border, #border, table{ border:4px solid
#B5807C }
```

If only the border color should be changed use the property `border-color`.

```
.border{ border-color:#B5807C }
```

If you want to add a box shadow in that color use:



Here you see how a box with a 4 pixel #B5807C colored shadow looks like.

```
.boxshadow{ -moz-box-shadow:4px 4px 4px  
4px #B5807C; -webkit-box-shadow:4px 4px  
4px 4px #B5807C; box-shadow:4px 4px 4px  
4px #B5807C }
```

# Background

The CSS property to change the background color of an element to Hex B5807C is called "background". The background property can be set on classes, ids or directly on the HTML element.

```
.background, #background, body{  
background:#B5807C }
```

If only the background color should be changed can be used:

```
.background{ background-color:#B5807C }
```

This example shows the color as background, it is applied via the CSS property "background".

To optimize and compress your CSS code, you can use our [online CSS compressor and optimizer](#) based on csstidy. If you want to create a linear or radial gradient as background or border, check our [CSS Gradient Generator](#).



Hey! You found this booklet interesting? Support Converting Colors with the new Membership Option!

The pro membership hides all ads, plus gives you double the colors in the color bucket, and more awesome pro features!

**[Learn more, Memberships starting at \\$2.50/m!](#)**

**Follow me  
on Twitter!**

@ConvertingColor