

Converting Colors

Hex(B5807D)

Have a look what the booklet for
Hex(B5807D) contains.

Hex(B5807D)	3
<i>Conversions</i>	4
<i>Details</i>	6
<i>Harmonies</i>	11
<i>Previews</i>	23
<i>Color Blindness Simulation</i>	26
<i>CSS Examples</i>	29

Color

Hex(B5807D)

Conversions

Conversions Part 1

Format	Color
Hex	B5807D
RGB	181, 128, 125
RGB Percent	71%, 50%, 49%
CMY	0.2902, 0.4980, 0.5098
CMYK	0.00, 0.29, 0.31, 0.29
HSL	3°, 27%, 60%
HSV	3°, 31%, 71%
XYZ	30.4769, 26.7428, 22.9576
YIQ	143.5050, 32.5510, 10.3030

Conversions

Conversions Part 2

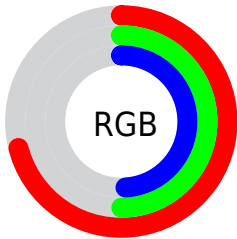
Format	Color
R_{YB}	181, 128, 125
Decimal	11894909
CIE Lab	58.74, 20.09, 9.82
CIE LCh	59, 22.361, 26.040
Yxy	26.7428, 0.3801, 0.3335
Android (android.graphics.Color)	4290084989 (0xFFB5807D)
YUV	143.5050, -9.1230, 32.8831
Hunter-Lab	51.7134, 14.6991, 9.8782

Details

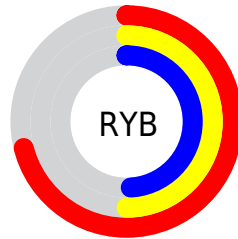
The Hex color **B5807D** is a dark color, and the websafe version is hex **CC9999**. A complement of this color would be **7DB2B5**, and the grayscale version is **909090**.

A 20% lighter version of the original color is **EEB5B2**, and **7F4E4C** is the 20% darker color. If you saturate the color by 10%, you get **B56F6B**, and if you desaturate by 10%, it is **B5918F**.

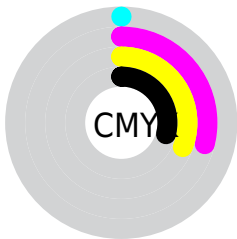
Distribution



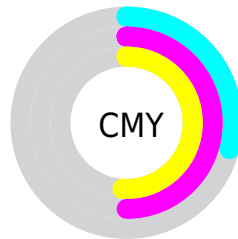
- Red (71%)
- Green (50%)
- Blue (49%)



- Red (71%)
- Yellow (50%)
- Blue (49%)



- Cyan (0%)
- Magenta (29%)
- Yellow (31%)
- Black (29%)



- Cyan (29%)
- Magenta (50%)
- Yellow (51%)

Brightness & Saturation Gradients

These gradients show how the Hex color B5807D changes by changing the brightness by 10 percent. The first figure shows a shift by +10% for each color and the second figure -10%.

Similar to the brightness gradients but the following saturation gradients show a change of the Hex color B5807D by changing the saturation by 10% instead.

 B5807D

 B5807D

FFFFFF

 996764

 EEB5B2

 7F4E4C

 FFD1CD

 653736

 FFEDE9

 4B2120

 330B09

 1C0001

 000000

 B5807D

 B5807D

 B56F6B

 B5918F

 B55E59

 B5A2A1

 B54D47

 B5B3B3

 B53B35

 B5C5C5

 B52A23

 B5D6D8

 B51910

 B5E7EA

 B50A00

 B5F8FC

 B5FFFF

Harmonies

Analogous

The Analogous color harmony consists of three colors that are next to each other on the color wheel.



B27F91



B5807D



AE856D

Triad

The Triadic color harmony groups three colors that are evenly spaced from another and form a triangle on the color wheel.



B5807D



739677



7190B4

Complementary

The Complementary color scheme is a pair of colors which are on the opposite of each other on the color wheel.



B5807D



7DB2B5

Split Complementary

Split-complementary colors differ from the complementary color scheme. The scheme consists of three colors, the original color and two neighbors of the complement color.



5A95AD



B5807D



5E988A

Square

The Square scheme is like the rectangle color scheme, but the four colors are evenly spaced on the color wheel.



B5807D



8A916A



53989E



8D89B0

Rectangle

The Rectangle color scheme consists of four colors that form a rectangle on the color wheel.



B5807D



A48968



53989E



6992B3

Sweetspot

The Sweet Spot groups the original color and five complimentary colors.



B5807D



EBD7D5



B57DB2



756968



F5F5F5



757575

Same Dimension

The Same Dimension uses a secret algorithm to generate beautiful new colors.



B5807D



EB9894



B59C7D



595150



990800



1A0100

Inverse Universe

The Inverse Universe completely reimagines the original color for something new.



7DB2B5



94E6EB



7D96B5



505959



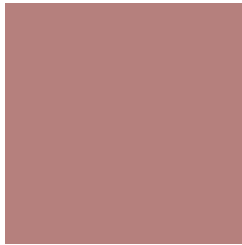
009199



00181A

Previews

White Background



This preview shows how the Hex color B5807D looks on a white background.

Color Contrast Check

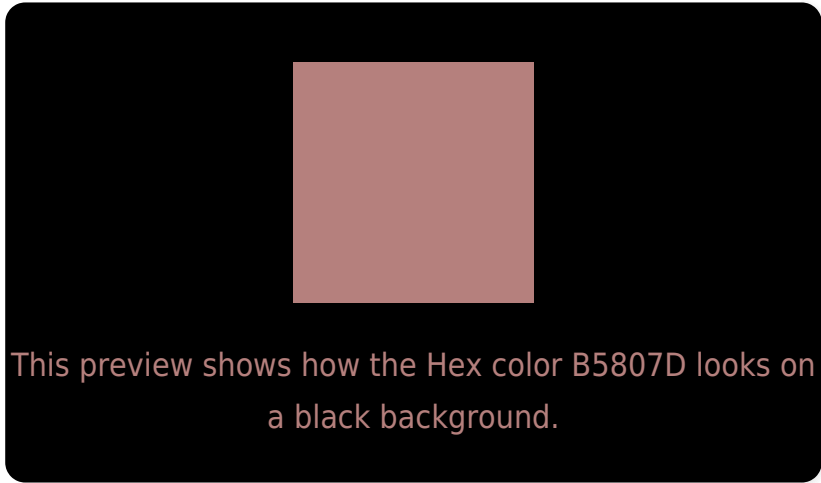
Large Text (above 18pt) WCAG AA ✓ Pass

Any Text WCAG AA × Fail

Large Text (above 18pt) WCAG AAA × Fail

Any Text WCAG AAA × Fail

Black Background



Color Contrast Check

Large Text (above 18pt) WCAG AA ✓ Pass

Any Text WCAG AA ✓ Pass

Large Text (above 18pt) WCAG AAA ✓ Pass

Any Text WCAG AAA × Fail

If you want to check with other color combinations, try the [Color Contrast Checker](#).

Hex B5807D Background



This preview shows how black text looks on a background with the Hex color B5807D.

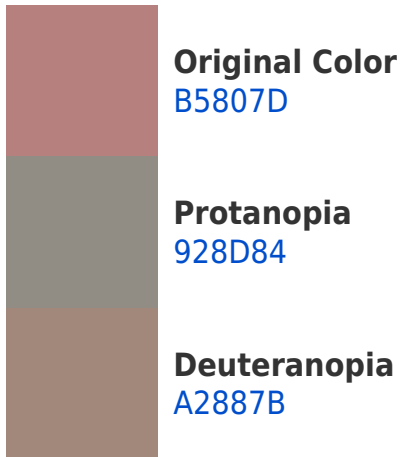


This preview shows how white text looks on a background with the Hex color B5807D.

Color Blindness Simulation

Color vision deficiency is a very complex topic, and I could not describe the different causes any better than Wikipedia does, so if you want to learn more, you should check out their [article about color blindness](#).

Dichromacy





Tritanopia
B67E88

Trichromacy



Original Color
B5807D

Protanomaly
9F8881

Deuteranomaly
A9857C

Tritanomaly
B67F84

Monochromacy



Original Color
B5807D

Achromatopsia
909090

Achromatomaly
9D8A89

CSS Examples

Text

The CSS property to change the color of the text to Hex B5807D is called "color". The color property can be set on classes, ids or directly on the HTML element.

This example shows how text in the color #B5807D looks like.

```
.text, #text, p{  
    color:#B5807D  
}
```

If you want to add a text shadow in that color use the text-shadow property, you can generate a text shadow directly with our [CSS Text Shadow Generator](#).

Here you see how black text with a 4 pixel #B5807D colored shadow looks like.

```
.shadow{ text-shadow: 4px 4px 2px #B5807D
}
```

Border

The CSS property to change the border of an element to Hex B5807D is called "border". The border property can be set on classes, ids or directly on the HTML element.

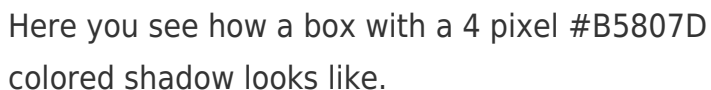
This example shows the color as border, it can be applied via the CSS property "border" or "border-color".

```
.border, #border, table{ border:4px solid
#B5807D }
```

If only the border color should be changed use the property `border-color`.

```
.border{ border-color:#B5807D }
```

If you want to add a box shadow in that color use:



Here you see how a box with a 4 pixel #B5807D colored shadow looks like.

```
.boxshadow{ -moz-box-shadow:4px 4px 4px  
4px #B5807D; -webkit-box-shadow:4px 4px  
4px 4px #B5807D; box-shadow:4px 4px 4px  
4px #B5807D }
```

Background

The CSS property to change the background color of an element to Hex B5807D is called "background". The background property can be set on classes, ids or directly on the HTML element.

```
.background, #background, body{  
background:#B5807D }
```

If only the background color should be changed can be used:

```
.background{ background-color:#B5807D }
```

This example shows the color as background, it is applied via the CSS property "background".

To optimize and compress your CSS code, you can use our [online CSS compressor and optimizer](#) based on csstidy. If you want to create a linear or radial gradient as background or border, check our [CSS Gradient Generator](#).

Hey! You found this booklet interesting? Support Converting Colors with the new Membership Option!

The pro membership hides all ads, plus gives you double the colors in the color bucket, and more awesome pro features!

[Learn more, Memberships starting at \\$2.50/m!](#)

**Follow me
on Twitter!**

@ConvertingColor