

Converting Colors

Hex(B58495)

Have a look what the booklet for
Hex(B58495) contains.

Hex(B58495)	3
<i>Conversions</i>	4
<i>Details</i>	6
<i>Harmonies</i>	11
<i>Previews</i>	23
<i>Color Blindness Simulation</i>	26
<i>CSS Examples</i>	29

Color

Hex(B58495)

Conversions

Conversions Part 1

Format	Color
Hex	B58495
RGB	181, 132, 149
RGB Percent	71%, 52%, 58%
CMY	0.2902, 0.4824, 0.4157
CMYK	0.00, 0.27, 0.18, 0.29
HSL	339°, 25%, 61%
HSV	339°, 27%, 71%
XYZ	32.7321, 28.4962, 32.2089
YIQ	148.5890, 23.7470, 15.6750

Conversions

Conversions Part 2

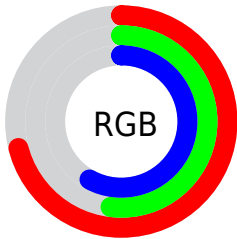
Format	Color
R_{YB}	181, 132, 149
Decimal	11895957
CIE _{Lab}	60.33, 21.44, -1.65
CIE _{LCh}	60, 21.504, 355.600
Yxy	28.4962, 0.3503, 0.3050
Android (android.graphics.Color)	4290086037 (0xFFB58495)
YUV	148.5890, 0.2026, 28.4244
Hunter-Lab	53.3818, 16.0326, 1.5936

Details

The Hex color **B58495** is a light color, and the websafe version is hex **CC9999**. A complement of this color would be **84B5A4**, and the grayscale version is **959595**.

A 20% lighter version of the original color is **EEB9CB**, and **7F5262** is the 20% darker color. If you saturate the color by 10%, you get **B57289**, and if you desaturate by 10%, it is **B596A1**.

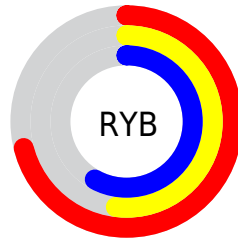
Distribution



Red (71%)

Green (52%)

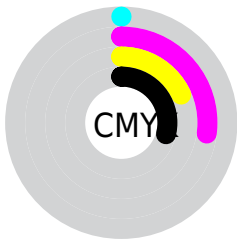
Blue (58%)



Red (71%)

Yellow (52%)

Blue (58%)

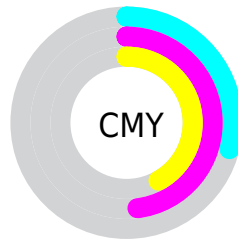


Cyan (0%)

Magenta (27%)

Yellow (18%)

Black (29%)



Cyan (29%)

Magenta (48%)

Yellow (42%)

Brightness & Saturation Gradients

These gradients show how the Hex color B58495 changes by changing the brightness by 10 percent. The first figure shows a shift by +10% for each color and the second figure -10%.

Similar to the brightness gradients but the following saturation gradients show a change of the Hex color B58495 by changing the saturation by 10% instead.

 B58495

 B58495

FFFFFF

 9A6B7B

 EEB9CB

 7F5262

 FFD5E7

 663A4B

 FFF2FF

 4D2434

 350E1F

 230006

 000000

 B58495

 B58495

 B57289

 B596A1

 B5607D

 B5A8AD

 B54E72

 B5BAB8

 B53C66

 B5CCC4

 B52A5A

 B5DFD0

 B5174E

 B5F1DC

 B50542

 B5FFE8

 B5003F

 B5FFF4

 B5FFFF

Harmonies

Analogous

The Analogous color harmony consists of three colors that are next to each other on the color wheel.



A787A7



B58495



B88582

Triad

The Triadic color harmony groups three colors that are evenly spaced from another and form a triangle on the color wheel.



B58495



8E956F



6199B0

Complementary

The Complementary color scheme is a pair of colors which are on the opposite of each other on the color wheel.



B58495



84B5A4

Split Complementary

Split-complementary colors differ from the complementary color scheme. The scheme consists of three colors, the original color and two neighbors of the complement color.



5B9CA1



B58495



789A7C

Square

The Square scheme is like the rectangle color scheme, but the four colors are evenly spaced on the color wheel.



B58495



A28F6C



659C8E



7794B7

Rectangle

The Rectangle color scheme consists of four colors that form a rectangle on the color wheel.



B58495



B48777



659C8E



5D9AAC

Sweetspot

The Sweet Spot groups the original color and five complimentary colors.



B58495



EBD8DE



A484B5



756A6E



F5F5F5



757575

Same Dimension

The Same Dimension uses a secret algorithm to generate beautiful new colors.



B58495



EBA0BA



B58B84



595053



990035



1A0009

Inverse Universe

The Inverse Universe completely reimagines the original color for something new.



B58495



EBA0BA



84AEB5



595053



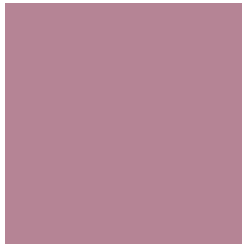
990035



1A0009

Previews

White Background



This preview shows how the Hex color B58495 looks on a white background.

Color Contrast Check

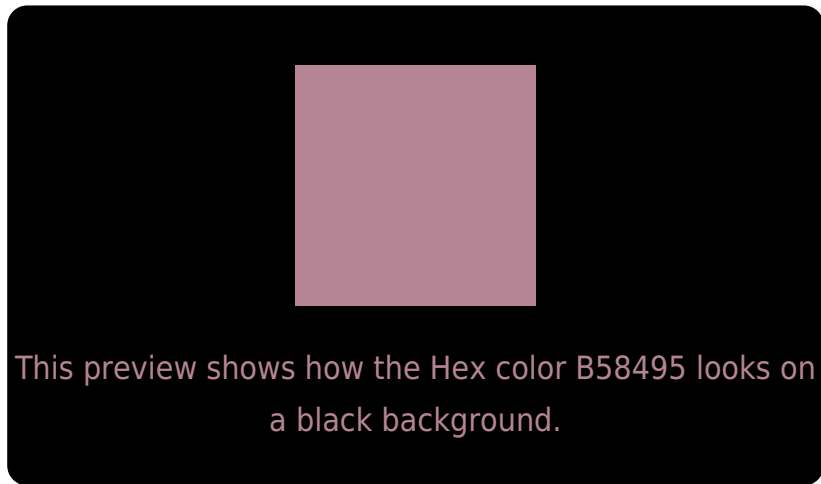
Large Text (above 18pt) WCAG AA ✓ Pass

Any Text WCAG AA × Fail

Large Text (above 18pt) WCAG AAA × Fail

Any Text WCAG AAA × Fail

Black Background



Color Contrast Check

Large Text (above 18pt) WCAG AA ✓ Pass

Any Text WCAG AA ✓ Pass

Large Text (above 18pt) WCAG AAA ✓ Pass

Any Text WCAG AAA × Fail

If you want to check with other color combinations, try the [Color Contrast Checker](#).

Hex B58495 Background



This preview shows how black text looks on a background with the Hex color B58495.

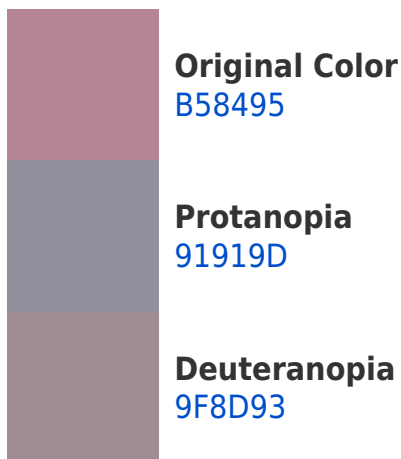



This preview shows how white text looks on a background with the Hex color B58495.

Color Blindness Simulation

Color vision deficiency is a very complex topic, and I could not describe the different causes any better than Wikipedia does, so if you want to learn more, you should check out their [article about color blindness](#).

Dichromacy





Tritanopia
B4858F

Trichromacy



Original Color
B58495

Protanomaly
9E8C9A

Deuteranomaly
A78A94

Tritanomaly
B48591

Monochromacy



Original Color
B58495

Achromatopsia
959595

Achromatomaly
A18F95

CSS Examples

Text

The CSS property to change the color of the text to Hex B58495 is called "color". The color property can be set on classes, ids or directly on the HTML element.

This example shows how text in the color #B58495 looks like.

```
.text, #text, p{  
    color:#B58495  
}
```

If you want to add a text shadow in that color use the text-shadow property, you can generate a text shadow directly with our [CSS Text Shadow Generator](#).

Here you see how black text with a 4 pixel #B58495 colored shadow looks like.

```
.shadow{ text-shadow: 4px 4px 2px #B58495
}
```

Border

The CSS property to change the border of an element to Hex B58495 is called "border". The border property can be set on classes, ids or directly on the HTML element.

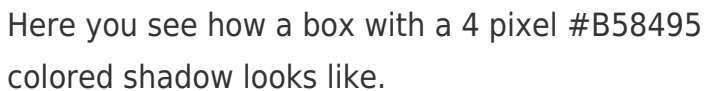
This example shows the color as border, it can be applied via the CSS property "border" or "border-color".

```
.border, #border, table{ border:4px solid
#B58495 }
```

If only the border color should be changed use the property `border-color`.

```
.border{ border-color:#B58495 }
```

If you want to add a box shadow in that color use:



Here you see how a box with a 4 pixel #B58495 colored shadow looks like.

```
.boxshadow{ -moz-box-shadow:4px 4px 4px  
4px #B58495; -webkit-box-shadow:4px 4px  
4px 4px #B58495; box-shadow:4px 4px 4px  
4px #B58495 }
```

Background

The CSS property to change the background color of an element to Hex B58495 is called "background". The background property can be set on classes, ids or directly on the HTML element.

```
.background, #background, body{  
background:#B58495 }
```

If only the background color should be changed can be used:

```
.background{ background-color:#B58495 }
```

This example shows the color as background, it is applied via the CSS property "background".

To optimize and compress your CSS code, you can use our [online CSS compressor and optimizer](#) based on csstidy. If you want to create a linear or radial gradient as background or border, check our [CSS Gradient Generator](#).

Hey! You found this booklet interesting? Support Converting Colors with the new Membership Option!

The pro membership hides all ads, plus gives you double the colors in the color bucket, and more awesome pro features!

[Learn more, Memberships starting at \\$2.50/m!](#)

**Follow me
on Twitter!**

@ConvertingColor