

Converting Colors

Hex(B58881)

Have a look what the booklet for
Hex(B58881) contains.

Hex(B58881)	3
<i>Conversions</i>	4
<i>Details</i>	6
<i>Harmonies</i>	11
<i>Previews</i>	23
<i>Color Blindness Simulation</i>	26
<i>CSS Examples</i>	29

Color

Hex(B58881)

Conversions

Conversions Part 1

Format	Color
Hex	B58881
RGB	181, 136, 129
RGB Percent	71%, 53%, 51%
CMY	0.2902, 0.4667, 0.4941
CMYK	0.00, 0.25, 0.29, 0.29
HSL	8°, 26%, 61%
HSV	8°, 29%, 71%
XYZ	31.8227, 29.0171, 24.6925
YIQ	148.6570, 29.0670, 7.3630

Conversions

Conversions Part 2

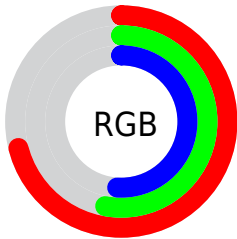
Format	Color
RYB	181, 137, 129
Decimal	11896961
CIELab	60.80, 16.17, 10.44
CIELCh	61, 19.251, 32.856
Yxy	29.0171, 0.3721, 0.3393
Android (android.graphics.Color)	4290087041 (0xFFB58881)
YUV	148.6570, -9.6909, 28.3648
Hunter-Lab	53.8675, 11.1823, 10.5291

Details

The Hex color **B58881** is a light color, and the websafe version is hex **CC9999**. A complement of this color would be **81AEB5**, and the grayscale version is **959595**.

A 20% lighter version of the original color is **EEBDB6**, and **7F5650** is the 20% darker color. If you saturate the color by 10%, you get **B5786F**, and if you desaturate by 10%, it is **B59893**.

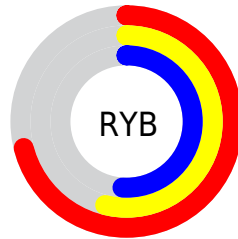
Distribution



Red (71%)

Green (53%)

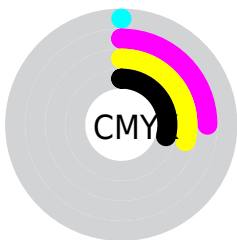
Blue (51%)



Red (71%)

Yellow (54%)

Blue (51%)

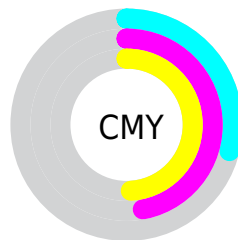


Cyan (0%)

Magenta (25%)

Yellow (29%)

Black (29%)



Cyan (29%)

Magenta (47%)

Yellow (49%)

Brightness & Saturation Gradients

These gradients show how the Hex color B58881 changes by changing the brightness by 10 percent. The first figure shows a shift by +10% for each color and the second figure -10%.

Similar to the brightness gradients but the following saturation gradients show a change of the Hex color B58881 by changing the saturation by 10% instead.

 B58881

 B58881

FFFFFF

 9A6F68

 EEBDB6

 7F5650

 FFD9D1

 653E39

 FFF6EE

 4C2823

 34130E

 200000

 000000

 B58881

 B58881

 B5786F

 B59893

 B5695D

 B5A7A5

 B5594B

 B5B7B7

 B54939

 B5C7C9

 B53A27

 B5D6DB

 B52A14

 B5E6EE

 B51A02

 B5F6FF

 B51800

 B5FFFF

Harmonies

Analogous

The Analogous color harmony consists of three colors that are next to each other on the color wheel.



B48792



B58881



AD8C75

Triad

The Triadic color harmony groups three colors that are evenly spaced from another and form a triangle on the color wheel.



B58881



789B83



8194B4

Complementary

The Complementary color scheme is a pair of colors which are on the opposite of each other on the color wheel.



B58881



81AEB5

Split Complementary

Split-complementary colors differ from the complementary color scheme. The scheme consists of three colors, the original color and two neighbors of the complement color.



6D99B0



B58881



699C94

Square

The Square scheme is like the rectangle color scheme, but the four colors are evenly spaced on the color wheel.



B58881



8B9776



639CA4



988EAF

Rectangle

The Rectangle color scheme consists of four colors that form a rectangle on the color wheel.



B58881



A39071



639CA4



7995B4

Sweetspot

The Sweet Spot groups the original color and five complimentary colors.



B58881



EBD8D5



B581AE



756A68



F5F5F5



757575

Same Dimension

The Same Dimension uses a secret algorithm to generate beautiful new colors.



B58881



EBA69B



B5A281



595250



991500



1A0300

Inverse Universe

The Inverse Universe completely reimagines the original color for something new.



81AEB5



9BE0EB



8194B5



505859



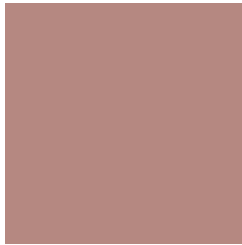
008499



00161A

Previews

White Background



This preview shows how the Hex color B58881 looks on a white background.

Color Contrast Check

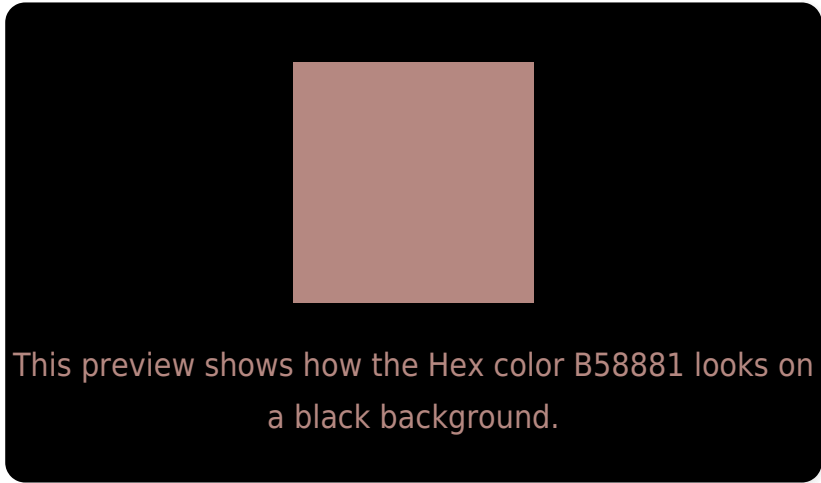
Large Text (above 18pt) WCAG AA ✓ Pass

Any Text WCAG AA ✗ Fail

Large Text (above 18pt) WCAG AAA ✗ Fail

Any Text WCAG AAA ✗ Fail

Black Background



Color Contrast Check

Large Text (above 18pt) WCAG AA ✓ Pass

Any Text WCAG AA ✓ Pass

Large Text (above 18pt) WCAG AAA ✓ Pass

Any Text WCAG AAA × Fail

If you want to check with other color combinations, try the [Color Contrast Checker](#).

Hex B58881 Background



This preview shows how black text looks on a background with the Hex color B58881.



This preview shows how white text looks on a background with the Hex color B58881.

Color Blindness Simulation

Color vision deficiency is a very complex topic, and I could not describe the different causes any better than Wikipedia does, so if you want to learn more, you should check out their [article about color blindness](#).

Dichromacy



Original Color
B58881

Protanopia
999286

Deuteranopia
A88D80



Tritanopia
B78690

Trichromacy



Original Color
B58881

Protanomaly
A38E84

Deuteranomaly
AD8B80

Tritanomaly
B6878B

Monochromacy



Original Color
B58881

Achromatopsia
959595

Achromatomaly
A1908E

CSS Examples

Text

The CSS property to change the color of the text to Hex B58881 is called "color". The color property can be set on classes, ids or directly on the HTML element.

This example shows how text in the color #B58881 looks like.

```
.text, #text, p{  
  color:#B58881  
}
```

If you want to add a text shadow in that color use the text-shadow property, you can generate a text shadow directly with our [CSS Text Shadow Generator](#).

Here you see how black text with a 4 pixel #B58881 colored shadow looks like.

```
.shadow{ text-shadow: 4px 4px 2px #B58881
}
```

Border

The CSS property to change the border of an element to Hex B58881 is called "border". The border property can be set on classes, ids or directly on the HTML element.

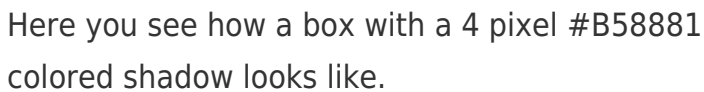
This example shows the color as border, it can be applied via the CSS property "border" or "border-color".

```
.border, #border, table{ border:4px solid
#B58881 }
```

If only the border color should be changed use the property `border-color`.

```
.border{ border-color:#B58881 }
```

If you want to add a box shadow in that color use:



Here you see how a box with a 4 pixel #B58881 colored shadow looks like.

```
.boxshadow{ -moz-box-shadow:4px 4px 4px  
4px #B58881; -webkit-box-shadow:4px 4px  
4px 4px #B58881; box-shadow:4px 4px 4px  
4px #B58881 }
```

Background

The CSS property to change the background color of an element to Hex B58881 is called "background". The background property can be set on classes, ids or directly on the HTML element.

```
.background, #background, body{  
background:#B58881 }
```

If only the background color should be changed can be used:

```
.background{ background-color:#B58881 }
```

This example shows the color as background, it is applied via the CSS property "background".

To optimize and compress your CSS code, you can use our [online CSS compressor and optimizer](#) based on csstidy. If you want to create a linear or radial gradient as background or border, check our [CSS Gradient Generator](#).

Hey! You found this booklet interesting? Support Converting Colors with the new Membership Option!

The pro membership hides all ads, plus gives you double the colors in the color bucket, and more awesome pro features!

[Learn more, Memberships starting at \\$2.50/m!](#)

**Follow me
on Twitter!**

@ConvertingColor