

# Converting Colors

Hex(B58891)

Have a look what the booklet for  
Hex(B58891) contains.

<b>Hex(B58891)</b> .....	3
<b><i>Conversions</i></b> .....	4
<b><i>Details</i></b> .....	6
<b><i>Harmonies</i></b> .....	11
<b><i>Previews</i></b> .....	23
<b><i>Color Blindness Simulation</i></b> .....	26
<b><i>CSS Examples</i></b> .....	29

# **Color**

**Hex(B58891)**

# Conversions

## Conversions Part 1

Format	Color
Hex	B58891
RGB	181, 136, 145
RGB Percent	71%, 53%, 57%
CMY	0.2902, 0.4667, 0.4314
CMYK	0.00, 0.25, 0.20, 0.29
HSL	348°, 23%, 62%
HSV	348°, 25%, 71%
XYZ	32.9710, 29.4764, 30.7398
YIQ	150.4810, 23.9310, 12.3390

# Conversions

## Conversions Part 2

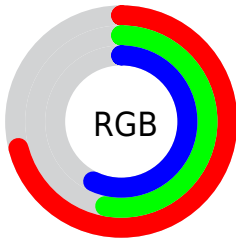
<b>Format</b>	<b>Color</b>
<a href="#">RYB</a>	<a href="#">181, 136, 145</a>
Decimal	<a href="#">11896977</a>
CIELab	<a href="#">61.20, 18.56, 1.90</a>
CIElCh	<a href="#">61, 18.658, 5.845</a>
Yxy	<a href="#">29.4764, 0.3538, 0.3163</a>
Android (android.graphics.Color)	<a href="#">4290087057 (0xFFB58891)</a>
YUV	<a href="#">150.4810, -2.7021, 26.7652</a>
Hunter-Lab	<a href="#">54.2922, 13.3898, 4.4350</a>

# Details

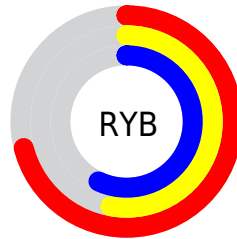
The Hex color **B58891** is a light color, and the websafe version is hex **CC9999**. A complement of this color would be **88B5AC**, and the grayscale version is **969696**.

A 20% lighter version of the original color is **EDBEC7**, and **7F565F** is the 20% darker color. If you saturate the color by 10%, you get **B57683**, and if you desaturate by 10%, it is **B59A9F**.

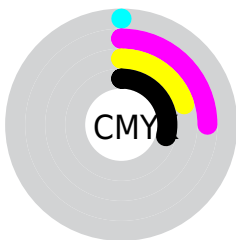
# Distribution



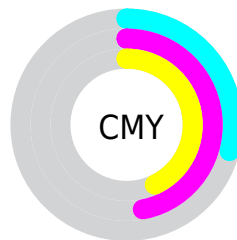
- Red (71%)
- Green (53%)
- Blue (57%)



- Red (71%)
- Yellow (53%)
- Blue (57%)



- Cyan (0%)
- Magenta (25%)
- Yellow (20%)
- Black (29%)



- Cyan (29%)
- Magenta (47%)
- Yellow (43%)

# Brightness & Saturation Gradients

These gradients show how the Hex color B58891 changes by changing the brightness by 10 percent. The first figure shows a shift by +10% for each color and the second figure -10%.

Similar to the brightness gradients but the following saturation gradients show a change of the Hex color B58891 by changing the saturation by 10% instead.



 B58891

 B58891

FFFFFF

 9A6E77

 EDBEC7

 7F565F

 FFD9E3

 663E47

 FFF6FF

 4D2831

 35121C

 230001

 000000

 B58891

 B58891

 B57683

 B59A9F

 B56474

 B5ACAE

 B55266

 B5BEBC

 B54057

 B5D0CB

 B52D49

 B5E3D9

 B51B3A

 B5F5E8

 B5092C

 B5FFF6

 B50024

 B5FFFF

# Harmonies

## Analogous

The Analogous color harmony consists of three colors that are next to each other on the color wheel.



AC8AA2



B58891



B58A81

# Triad

The Triadic color harmony groups three colors that are evenly spaced from another and form a triangle on the color wheel.



B58891



8B9979



7199B1

# Complementary

The Complementary color scheme is a pair of colors which are on the opposite of each other on the color wheel.



B58891



88B5AC

# Split Complementary

Split-complementary colors differ from the complementary color scheme. The scheme consists of three colors, the original color and two neighbors of the complement color.



669CA6



B58891



789C86

# Square

The Square scheme is like the rectangle color scheme, but the four colors are evenly spaced on the color wheel.



B58891



9D9473



6A9D96



8594B4

# Rectangle

The Rectangle color scheme consists of four colors that form a rectangle on the color wheel.



B58891



B08C79



6A9D96



6C9AAE



# Sweetspot

The Sweet Spot groups the original color and five complimentary colors.



B58891



EBDADD



AC88B5



756C6E



F5F5F5



757575



# Same Dimension

The Same Dimension uses a secret algorithm to generate beautiful new colors.



B58891



EBA4B2



B59688



595052



99001F



1A0005



# Inverse Universe

The Inverse Universe completely reimagines the original color for something new.



B58891



EBA4B2



88A8B5



595052



99001F

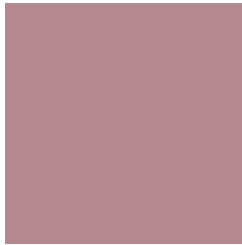


1A0005



# Previews

## White Background



This preview shows how the Hex color B58891 looks on a white background.

## Color Contrast Check

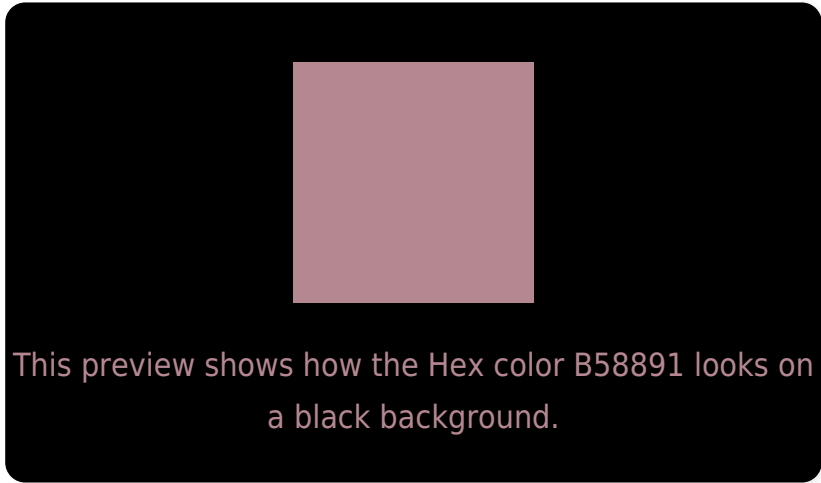
Large Text (above 18pt) WCAG AA ✓ Pass

Any Text WCAG AA × Fail

Large Text (above 18pt) WCAG AAA × Fail

Any Text WCAG AAA × Fail

# Black Background



## Color Contrast Check

Large Text (above 18pt) WCAG AA ✓ Pass

Any Text WCAG AA ✓ Pass

Large Text (above 18pt) WCAG AAA ✓ Pass

Any Text WCAG AAA × Fail

If you want to check with other color combinations, try the [Color Contrast Checker](#).



## Hex B58891 Background



This preview shows how black text looks on a background with the Hex color B58891.



This preview shows how white text looks on a background with the Hex color B58891.

# Color Blindness Simulation

Color vision deficiency is a very complex topic, and I could not describe the different causes any better than Wikipedia does, so if you want to learn more, you should check out their [article about color blindness](#).

## Dichromacy



**Original Color**  
B58891

**Protanopia**  
969397

**Deuteranopia**  
A48F90



**Tritanopia**  
B58892

# Trichromacy



**Original Color**  
B58891

**Protanomaly**  
A18F95

**Deuteranomaly**  
AA8C90

**Tritanomaly**  
B58892

# Monochromacy



**Original Color**  
B58891

**Achromatopsia**  
969696

**Achromatomaly**  
A19194

# CSS Examples

## Text

The CSS property to change the color of the text to Hex B58891 is called "color". The color property can be set on classes, ids or directly on the HTML element.

This example shows how text in the color #B58891 looks like.

```
.text, #text, p{  
    color:#B58891  
}
```

If you want to add a text shadow in that color use the text-shadow property, you can generate a text shadow directly with our [CSS Text Shadow Generator](#).

Here you see how black text with a 4 pixel #B58891 colored shadow looks like.

```
.shadow{ text-shadow: 4px 4px 2px #B58891
}
```

## Border

The CSS property to change the border of an element to Hex B58891 is called "border". The border property can be set on classes, ids or directly on the HTML element.

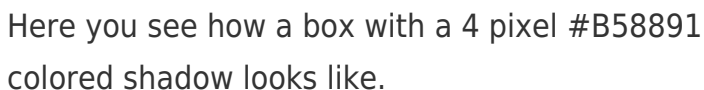
This example shows the color as border, it can be applied via the CSS property "border" or "border-color".

```
.border, #border, table{ border:4px solid
#B58891 }
```

If only the border color should be changed use the property `border-color`.

```
.border{ border-color:#B58891 }
```

If you want to add a box shadow in that color use:



Here you see how a box with a 4 pixel #B58891 colored shadow looks like.

```
.boxshadow{ -moz-box-shadow:4px 4px 4px  
4px #B58891; -webkit-box-shadow:4px 4px  
4px 4px #B58891; box-shadow:4px 4px 4px  
4px #B58891 }
```

# Background

The CSS property to change the background color of an element to Hex B58891 is called "background". The background property can be set on classes, ids or directly on the HTML element.

```
.background, #background, body{  
background:#B58891 }
```

If only the background color should be changed can be used:

```
.background{ background-color:#B58891 }
```

This example shows the color as background, it is applied via the CSS property "background".

To optimize and compress your CSS code, you can use our [online CSS compressor and optimizer](#) based on csstidy. If you want to create a linear or radial gradient as background or border, check our [CSS Gradient Generator](#).



Hey! You found this booklet interesting? Support Converting Colors with the new Membership Option!

The pro membership hides all ads, plus gives you double the colors in the color bucket, and more awesome pro features!

**[Learn more, Memberships starting at \\$2.50/m!](#)**

**Follow me  
on Twitter!**

@ConvertingColor