

Converting Colors

Hex(B58C8F)

Have a look what the booklet for
Hex(B58C8F) contains.

Hex(B58C8F)	3
<i>Conversions</i>	4
<i>Details</i>	6
<i>Harmonies</i>	11
<i>Previews</i>	23
<i>Color Blindness Simulation</i>	26
<i>CSS Examples</i>	29

Color

Hex(B58C8F)

Conversions

Conversions Part 1

Format	Color
Hex	B58C8F
RGB	181, 140, 143
RGB Percent	71%, 55%, 56%
CMY	0.2902, 0.4510, 0.4392
CMYK	0.00, 0.23, 0.21, 0.29
HSL	356°, 22%, 63%
HSV	356°, 23%, 71%
XYZ	33.3921, 30.5631, 30.1259
YIQ	152.6010, 23.4730, 9.6250

Conversions

Conversions Part 2

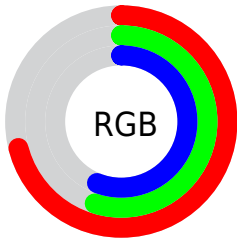
Format	Color
RYB	181, 140, 143
Decimal	11897999
CIELab	62.14, 16.01, 4.40
CIElCh	62, 16.603, 15.352
Yxy	30.5631, 0.3549, 0.3249
Android (android.graphics.Color)	4290088079 (0xFFB58C8F)
YUV	152.6010, -4.7333, 24.9059
Hunter-Lab	55.2839, 11.0691, 6.3898

Details

The Hex color **B58C8F** is a light color, and the websafe version is hex **CC9999**. A complement of this color would be **8CB5B2**, and the grayscale version is **999999**.

A 20% lighter version of the original color is **EDC2C5**, and **7F5A5D** is the 20% darker color. If you saturate the color by 10%, you get **B57A7E**, and if you desaturate by 10%, it is **B59EA0**.

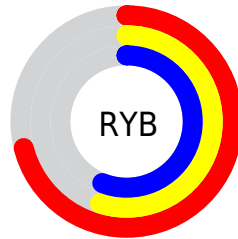
Distribution



Red (71%)

Green (55%)

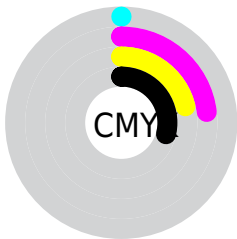
Blue (56%)



Red (71%)

Yellow (55%)

Blue (56%)

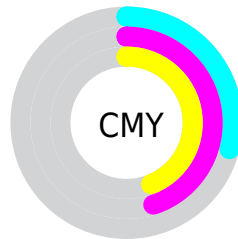


Cyan (0%)

Magenta (23%)

Yellow (21%)

Black (29%)



Cyan (29%)

Magenta (45%)

Yellow (44%)

Brightness & Saturation Gradients

These gradients show how the Hex color B58C8F changes by changing the brightness by 10 percent. The first figure shows a shift by +10% for each color and the second figure -10%.

Similar to the brightness gradients but the following saturation gradients show a change of the Hex color B58C8F by changing the saturation by 10% instead.

 B58C8F

 B58C8F

FFFFFF

 9A7275

 EDC2C5

 7F5A5D

 FFDEE1

 664245

 FFFAFD

 4D2C2F

 35161A

 220000

 000000

 B58C8F

 B58C8F

 B57A7E

 B59EA0

 B5686D

 B5B0B1

 B5565D

 B5C2C1

 B5444C

 B5D4D2

 B5323B

 B5E7E3

 B51F2A

 B5F9F4

 B50D1A

 B5FFFF

 B5000D

Harmonies

Analogous

The Analogous color harmony consists of three colors that are next to each other on the color wheel.



AF8D9E



B58C8F



B28E82

Triad

The Triadic color harmony groups three colors that are evenly spaced from another and form a triangle on the color wheel.



B58C8F



899C81



7D9AB2

Complementary

The Complementary color scheme is a pair of colors which are on the opposite of each other on the color wheel.



B58C8F



8CB5B2

Split Complementary

Split-complementary colors differ from the complementary color scheme. The scheme consists of three colors, the original color and two neighbors of the complement color.



709DAB



B58C8F



799E8E

Square

The Square scheme is like the rectangle color scheme, but the four colors are evenly spaced on the color wheel.



B58C8F



9A987A



709F9D



8F95B2

Rectangle

The Rectangle color scheme consists of four colors that form a rectangle on the color wheel.



B58C8F



AC917C



709F9D



789BB0

Sweetspot

The Sweet Spot groups the original color and five complimentary colors.



B58C8F



EBDADB



B28CB5



756C6D



F5F5F5



757575

Same Dimension

The Same Dimension uses a secret algorithm to generate beautiful new colors.



B58C8F



EBABB0



B59D8C



595051



99000B



1A0002

Inverse Universe

The Inverse Universe completely reimagines the original color for something new.



B58C8F



EBABB0



8CA4B5



595051



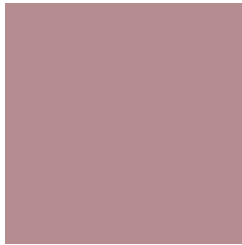
99000B



1A0002

Previews

White Background



This preview shows how the Hex color B58C8F looks on a white background.

Color Contrast Check

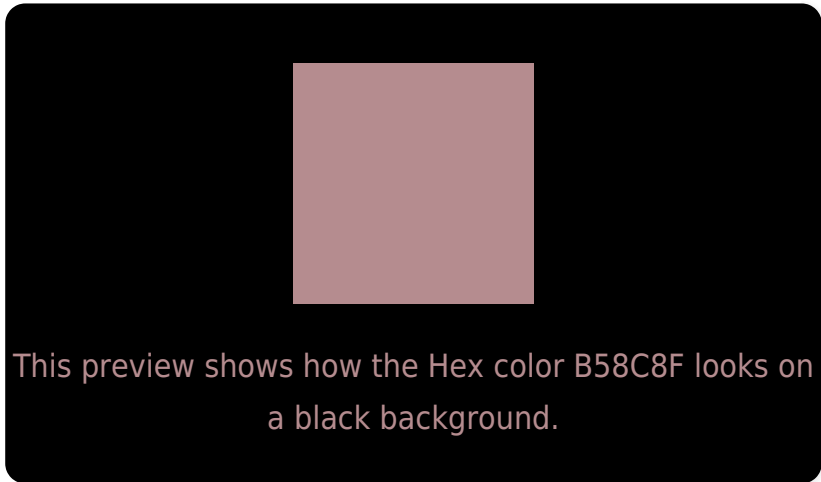
Large Text (above 18pt) WCAG AA × Fail

Any Text WCAG AA × Fail

Large Text (above 18pt) WCAG AAA × Fail

Any Text WCAG AAA × Fail

Black Background



Color Contrast Check

Large Text (above 18pt) WCAG AA ✓ Pass

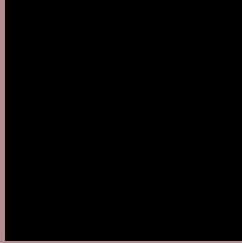
Any Text WCAG AA ✓ Pass

Large Text (above 18pt) WCAG AAA ✓ Pass

Any Text WCAG AAA ✓ Pass

If you want to check with other color combinations, try the [Color Contrast Checker](#).

Hex B58C8F Background



This preview shows how black text looks on a background with the Hex color B58C8F.



This preview shows how white text looks on a background with the Hex color B58C8F.

Color Blindness Simulation

Color vision deficiency is a very complex topic, and I could not describe the different causes any better than Wikipedia does, so if you want to learn more, you should check out their [article about color blindness](#).

Dichromacy



Original Color
B58C8F

Protanopia
999694

Deuteranopia
A8918E



Tritanopia
B68B96

Trichromacy



Original Color
B58C8F

Protanomaly
A39292

Deuteranomaly
AD8F8E

Tritanomaly
B68B93

Monochromacy



Original Color
B58C8F

Achromatopsia
999999

Achromatomaly
A39495

CSS Examples

Text

The CSS property to change the color of the text to Hex B58C8F is called "color". The color property can be set on classes, ids or directly on the HTML element.

This example shows how text in the color #B58C8F looks like.

```
.text, #text, p{  
    color:#B58C8F  
}
```

If you want to add a text shadow in that color use the text-shadow property, you can generate a text shadow directly with our [CSS Text Shadow Generator](#).

Here you see how black text with a 4 pixel #B58C8F colored shadow looks like.

```
.shadow{ text-shadow: 4px 4px 2px #B58C8F
}
```

Border

The CSS property to change the border of an element to Hex B58C8F is called "border". The border property can be set on classes, ids or directly on the HTML element.

This example shows the color as border, it can be applied via the CSS property "border" or "border-color".

```
.border, #border, table{ border:4px solid
#B58C8F }
```

If only the border color should be changed use the property `border-color`.

```
.border{ border-color:#B58C8F }
```

If you want to add a box shadow in that color use:

Here you see how a box with a 4 pixel #B58C8F colored shadow looks like.

```
.boxshadow{ -moz-box-shadow:4px 4px 4px  
4px #B58C8F; -webkit-box-shadow:4px 4px  
4px 4px #B58C8F; box-shadow:4px 4px 4px  
4px #B58C8F }
```

Background

The CSS property to change the background color of an element to Hex B58C8F is called "background". The background property can be set on classes, ids or directly on the HTML element.

```
.background, #background, body{  
background:#B58C8F }
```

If only the background color should be changed can be used:

```
.background{ background-color:#B58C8F }
```

This example shows the color as background, it is applied via the CSS property "background".

To optimize and compress your CSS code, you can use our [online CSS compressor and optimizer](#) based on csstidy. If you want to create a linear or radial gradient as background or border, check our [CSS Gradient Generator](#).

Hey! You found this booklet interesting? Support Converting Colors with the new Membership Option!

The pro membership hides all ads, plus gives you double the colors in the color bucket, and more awesome pro features!

[Learn more, Memberships starting at \\$2.50/m!](#)

**Follow me
on Twitter!**

@ConvertingColor