

Converting Colors

Hex(B58F96)

Have a look what the booklet for
Hex(B58F96) contains.

Hex(B58F96)	3
<i>Conversions</i>	4
<i>Details</i>	6
<i>Harmonies</i>	11
<i>Previews</i>	23
<i>Color Blindness Simulation</i>	26
<i>CSS Examples</i>	29

Color

Hex(B58F96)

Conversions

Conversions Part 1

Format	Color
Hex	B58F96
RGB	181, 143, 150
RGB Percent	71%, 56%, 59%
CMY	0.2902, 0.4392, 0.4118
CMYK	0.00, 0.21, 0.17, 0.29
HSL	349°, 20%, 64%
HSV	349°, 21%, 71%
XYZ	34.3835, 31.6707, 33.1550
YIQ	155.1600, 20.4010, 10.2330

Conversions

Conversions Part 2

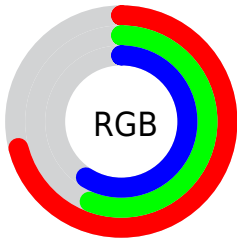
Format	Color
RYB	181, 143, 150
Decimal	11898774
CIELab	63.07, 15.45, 1.77
CIElCh	63, 15.549, 6.552
Yxy	31.6707, 0.3466, 0.3192
Android (android.graphics.Color)	4290088854 (0xFFB58F96)
YUV	155.1600, -2.5439, 22.6617
Hunter-Lab	56.2767, 10.5744, 4.4634

Details

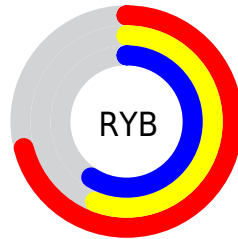
The Hex color **B58F96** is a light color, and the websafe version is hex **CC9999**. A complement of this color would be **8FB5AE**, and the grayscale version is **9B9B9B**.

A 20% lighter version of the original color is **EDC5CC**, and **805D63** is the 20% darker color. If you saturate the color by 10%, you get **B57D87**, and if you desaturate by 10%, it is **B5A1A5**.

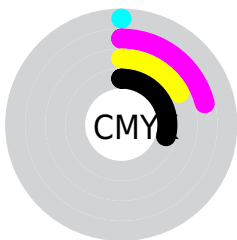
Distribution



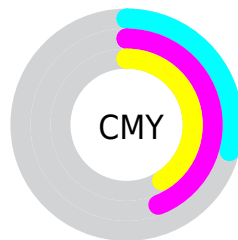
- Red (71%)
- Green (56%)
- Blue (59%)



- Red (71%)
- Yellow (56%)
- Blue (59%)



- Cyan (0%)
- Magenta (21%)
- Yellow (17%)
- Black (29%)



- Cyan (29%)
- Magenta (44%)
- Yellow (41%)

Brightness & Saturation Gradients

These gradients show how the Hex color B58F96 changes by changing the brightness by 10 percent. The first figure shows a shift by +10% for each color and the second figure -10%.

Similar to the brightness gradients but the following saturation gradients show a change of the Hex color B58F96 by changing the saturation by 10% instead.

 B58F96

 B58F96

FFFFFF

 9A757C

 EDC5CC

 805D63

 FFE1E8

 66454B

FFFEFF

 4E2E35

 361920

 220008

 000000

 B58F96

 B58F96

 B57D87

 B5A1A5

 B56B78

 B5B3B4

 B5596A

 B5C5C2

 B5475B

 B5D7D1

 B5354C

 B5EAE0

 B5223D

 B5FCEF

 B5102F

 B5FFFD

 B50021

 B5FFFF

Harmonies

Analogous

The Analogous color harmony consists of three colors that are next to each other on the color wheel.



AD90A4



B58F96



B59089

Triad

The Triadic color harmony groups three colors that are evenly spaced from another and form a triangle on the color wheel.



B58F96



919D82



7D9DB2

Complementary

The Complementary color scheme is a pair of colors which are on the opposite of each other on the color wheel.



B58F96



8FB5AE

Split Complementary

Split-complementary colors differ from the complementary color scheme. The scheme consists of three colors, the original color and two neighbors of the complement color.



74A0A9



B58F96



82A08D

Square

The Square scheme is like the rectangle color scheme, but the four colors are evenly spaced on the color wheel.



B58F96



A0997D



77A19B



8D99B4

Rectangle

The Rectangle color scheme consists of four colors that form a rectangle on the color wheel.



B58F96



B09382



77A19B



799EAF

Sweetspot

The Sweet Spot groups the original color and five complimentary colors.



B58F96



EBDDDF



AD8FB5



756D6F



F5F5F5



757575

Same Dimension

The Same Dimension uses a secret algorithm to generate beautiful new colors.



B58F96



EBB0BB



B59A8F



595052



99001C



1A0005

Inverse Universe

The Inverse Universe completely reimagines the original color for something new.



B58F96



EBB0BB



8FAAB5



595052



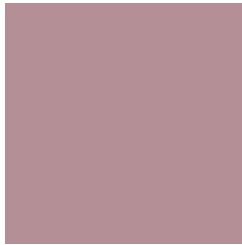
99001C



1A0005

Previews

White Background



This preview shows how the Hex color B58F96 looks on a white background.

Color Contrast Check

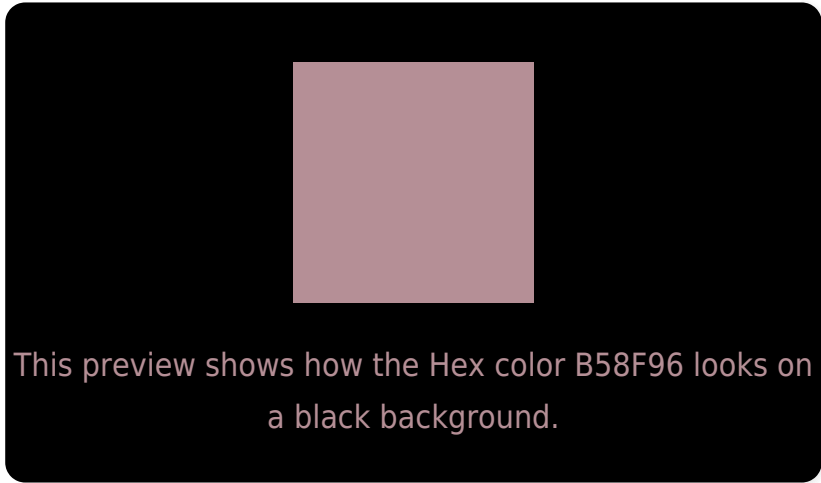
Large Text (above 18pt) WCAG AA × Fail

Any Text WCAG AA × Fail

Large Text (above 18pt) WCAG AAA × Fail

Any Text WCAG AAA × Fail

Black Background



Color Contrast Check

Large Text (above 18pt) WCAG AA ✓ Pass

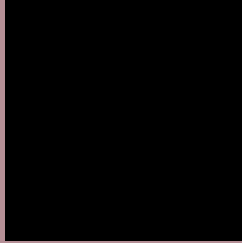
Any Text WCAG AA ✓ Pass

Large Text (above 18pt) WCAG AAA ✓ Pass

Any Text WCAG AAA ✓ Pass

If you want to check with other color combinations, try the [Color Contrast Checker](#).

Hex B58F96 Background



This preview shows how black text looks on a background with the Hex color B58F96.



This preview shows how white text looks on a background with the Hex color B58F96.

Color Blindness Simulation

Color vision deficiency is a very complex topic, and I could not describe the different causes any better than Wikipedia does, so if you want to learn more, you should check out their [article about color blindness](#).

Dichromacy



Original Color
B58F96

Protanopia
9B989B

Deuteranopia
A99495



Tritanopia
B58E99

Trichromacy



Original Color
B58F96

Protanomaly
A49599

Deuteranomaly
AD9295

Tritanomaly
B58E98

Monochromacy



Original Color
B58F96

Achromatopsia
9B9B9B

Achromatomaly
A49799

CSS Examples

Text

The CSS property to change the color of the text to Hex B58F96 is called "color". The color property can be set on classes, ids or directly on the HTML element.

This example shows how text in the color #B58F96 looks like.

```
.text, #text, p{  
    color:#B58F96  
}
```

If you want to add a text shadow in that color use the text-shadow property, you can generate a text shadow directly with our [CSS Text Shadow Generator](#).

Here you see how black text with a 4 pixel #B58F96 colored shadow looks like.

```
.shadow{ text-shadow: 4px 4px 2px #B58F96
}
```

Border

The CSS property to change the border of an element to Hex B58F96 is called "border". The border property can be set on classes, ids or directly on the HTML element.

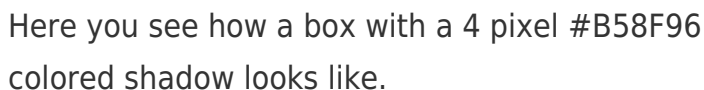
This example shows the color as border, it can be applied via the CSS property "border" or "border-color".

```
.border, #border, table{ border:4px solid
#B58F96 }
```

If only the border color should be changed use the property `border-color`.

```
.border{ border-color:#B58F96 }
```

If you want to add a box shadow in that color use:



Here you see how a box with a 4 pixel #B58F96 colored shadow looks like.

```
.boxshadow{ -moz-box-shadow:4px 4px 4px  
4px #B58F96; -webkit-box-shadow:4px 4px  
4px 4px #B58F96; box-shadow:4px 4px 4px  
4px #B58F96 }
```

Background

The CSS property to change the background color of an element to Hex B58F96 is called "background". The background property can be set on classes, ids or directly on the HTML element.

```
.background, #background, body{  
background:#B58F96 }
```

If only the background color should be changed can be used:

```
.background{ background-color:#B58F96 }
```

This example shows the color as background, it is applied via the CSS property "background".

To optimize and compress your CSS code, you can use our [online CSS compressor and optimizer](#) based on csstidy. If you want to create a linear or radial gradient as background or border, check our [CSS Gradient Generator](#).

Hey! You found this booklet interesting? Support Converting Colors with the new Membership Option!

The pro membership hides all ads, plus gives you double the colors in the color bucket, and more awesome pro features!

[Learn more, Memberships starting at \\$2.50/m!](#)

**Follow me
on Twitter!**

@ConvertingColor