

Converting Colors

Hex(B5905A)

Have a look what the booklet for
Hex(B5905A) contains.

Hex(B5905A)	3
<i>Conversions</i>	4
<i>Details</i>	6
<i>Harmonies</i>	11
<i>Previews</i>	23
<i>Color Blindness Simulation</i>	26
<i>CSS Examples</i>	29

Color

Hex(B5905A)

Conversions

Conversions Part 1

Format	Color
Hex	B5905A
RGB	181, 144, 90
RGB Percent	71%, 56%, 35%
CMY	0.2902, 0.4353, 0.6471
CMYK	0.00, 0.20, 0.50, 0.29
HSL	36°, 38%, 53%
HSV	36°, 50%, 71%
XYZ	30.8748, 30.5085, 13.9343
YIQ	148.9070, 39.3860, -8.9500

Conversions

Conversions Part 2

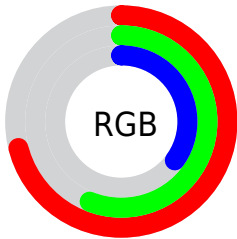
Format	Color
RYB	152, 181, 90
Decimal	11898970
CIELab	62.09, 7.11, 33.85
CIElCh	62, 34.591, 78.134
Yxy	30.5085, 0.4099, 0.4051
Android (android.graphics.Color)	4290089050 (0xFFB5905A)
YUV	148.9070, -29.0412, 28.1456
Hunter-Lab	55.2345, 3.1170, 23.7067

Details

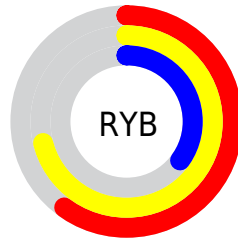
The Hex color **B5905A** is a dark color, and the websafe version is hex **CC9966**. A complement of this color would be **5A7FB5**, and the grayscale version is **959595**.

A 20% lighter version of the original color is **EFC68D**, and **7E5E2A** is the 20% darker color. If you saturate the color by 10%, you get **B58948**, and if you desaturate by 10%, it is **B5976C**.

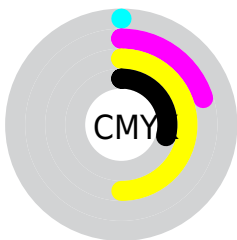
Distribution



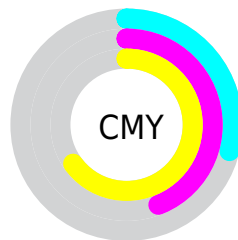
- Red (71%)
- Green (56%)
- Blue (35%)



- Red (60%)
- Yellow (71%)
- Blue (35%)



- Cyan (0%)
- Magenta (20%)
- Yellow (50%)
- Black (29%)



- Cyan (29%)
- Magenta (44%)
- Yellow (65%)

Brightness & Saturation Gradients

These gradients show how the Hex color B5905A changes by changing the brightness by 10 percent. The first figure shows a shift by +10% for each color and the second figure -10%.

Similar to the brightness gradients but the following saturation gradients show a change of the Hex color B5905A by changing the saturation by 10% instead.

 B5905A

 B5905A

FFFFFF

 997642

 EFC68D

 7E5E2A

 FFE2A8

 634613

 FFFEC3

 4A3000

 FFFFDF

 301B00

 FFFFFC

 180200

 000000

 B5905A

 B5905A

 B58948

 B5976C

 B58136

 B59F7E

 B57A24

 B5A690

 B57312

 B5ADA2

 B56B00

 B5B5B5

 B5BCC7

 B5C4D9

 B5CBEB

 B5D2FD

Harmonies

Analogous

The Analogous color harmony consists of three colors that are next to each other on the color wheel.



CA866A



B5905A



989A5B

Triad

The Triadic color harmony groups three colors that are evenly spaced from another and form a triangle on the color wheel.



B5905A



1EA6A8



B187BF

Complementary

The Complementary color scheme is a pair of colors which are on the opposite of each other on the color wheel.



B5905A



5A7FB5

Split Complementary

Split-complementary colors differ from the complementary color scheme. The scheme consists of three colors, the original color and two neighbors of the complement color.



8893D0



B5905A



1AA3C3

Square

The Square scheme is like the rectangle color scheme, but the four colors are evenly spaced on the color wheel.



B5905A



4DA688



549DD2



CA7FA4

Rectangle

The Rectangle color scheme consists of four colors that form a rectangle on the color wheel.



B5905A



819F65



549DD2



A48BC6

Sweetspot

The Sweet Spot groups the original color and five complimentary colors.



B5905A



EBDCC7



B55A80



756D60



F5F5F5



757575

Same Dimension

The Same Dimension uses a secret algorithm to generate beautiful new colors.



B5905A



EBB15E



ADB55A



595650



995B00



1A0F00

Inverse Universe

The Inverse Universe completely reimagines the original color for something new.



5A7FB5



5E97EB



625AB5



505459



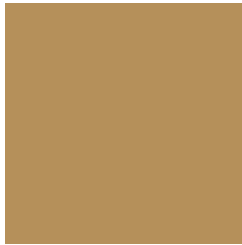
003E99



000A1A

Previews

White Background



This preview shows how the Hex color B5905A looks on a white background.

Color Contrast Check

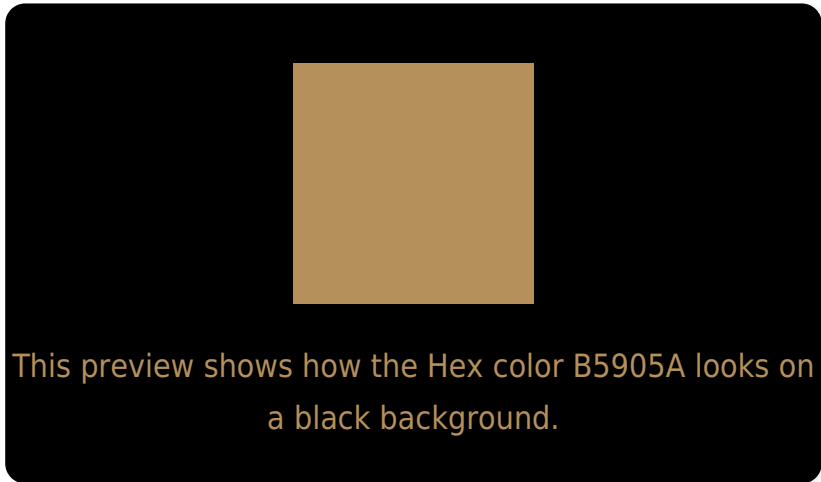
Large Text (above 18pt) WCAG AA × Fail

Any Text WCAG AA × Fail

Large Text (above 18pt) WCAG AAA × Fail

Any Text WCAG AAA × Fail

Black Background



Color Contrast Check

Large Text (above 18pt) WCAG AA ✓ Pass

Any Text WCAG AA ✓ Pass

Large Text (above 18pt) WCAG AAA ✓ Pass

Any Text WCAG AAA ✓ Pass

If you want to check with other color combinations, try the [Color Contrast Checker](#).

Hex B5905A Background



This preview shows how black text looks on a background with the Hex color B5905A.



This preview shows how white text looks on a background with the Hex color B5905A.

Color Blindness Simulation

Color vision deficiency is a very complex topic, and I could not describe the different causes any better than Wikipedia does, so if you want to learn more, you should check out their [article about color blindness](#).


Dichromacy



Original Color
B5905A

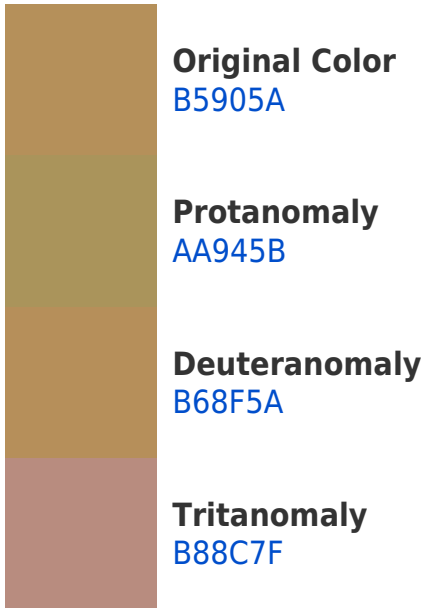
Protanopia
A4965C

Deuteranopia
B68F5A

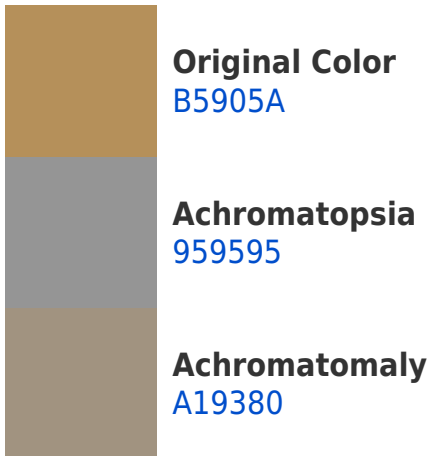


Tritanopia
BA8994

Trichromacy



Monochromacy



CSS Examples

Text

The CSS property to change the color of the text to Hex B5905A is called "color". The color property can be set on classes, ids or directly on the HTML element.

This example shows how text in the color #B5905A looks like.

```
.text, #text, p{  
    color:#B5905A  
}
```

If you want to add a text shadow in that color use the text-shadow property, you can generate a text shadow directly with our [CSS Text Shadow Generator](#).

Here you see how black text with a 4 pixel #B5905A colored shadow looks like.

```
.shadow{ text-shadow: 4px 4px 2px #B5905A
}
```

Border

The CSS property to change the border of an element to Hex B5905A is called "border". The border property can be set on classes, ids or directly on the HTML element.

This example shows the color as border, it can be applied via the CSS property "border" or "border-color".

```
.border, #border, table{ border:4px solid
#B5905A }
```

If only the border color should be changed use the property `border-color`.

```
.border{ border-color:#B5905A }
```

If you want to add a box shadow in that color use:

Here you see how a box with a 4 pixel #B5905A colored shadow looks like.

```
.boxshadow{ -moz-box-shadow:4px 4px 4px  
4px #B5905A; -webkit-box-shadow:4px 4px  
4px 4px #B5905A; box-shadow:4px 4px 4px  
4px #B5905A }
```

Background

The CSS property to change the background color of an element to Hex B5905A is called "background". The background property can be set on classes, ids or directly on the HTML element.

```
.background, #background, body{  
background:#B5905A }
```

If only the background color should be changed can be used:

```
.background{ background-color:#B5905A }
```

This example shows the color as background, it is applied via the CSS property "background".

To optimize and compress your CSS code, you can use our [online CSS compressor and optimizer](#) based on csstidy. If you want to create a linear or radial gradient as background or border, check our [CSS Gradient Generator](#).

Hey! You found this booklet interesting? Support Converting Colors with the new Membership Option!

The pro membership hides all ads, plus gives you double the colors in the color bucket, and more awesome pro features!

[Learn more, Memberships starting at \\$2.50/m!](#)

**Follow me
on Twitter!**

@ConvertingColor