

Converting Colors

Hex(B5916C)

Have a look what the booklet for
Hex(B5916C) contains.

Hex(B5916C)	3
<i>Conversions</i>	4
<i>Details</i>	6
<i>Harmonies</i>	11
<i>Previews</i>	23
<i>Color Blindness Simulation</i>	26
<i>CSS Examples</i>	29

Color

Hex(B5916C)

Conversions

Conversions Part 1

Format	Color
Hex	B5916C
RGB	181, 145, 108
RGB Percent	71%, 57%, 42%
CMY	0.2902, 0.4314, 0.5765
CMYK	0.00, 0.20, 0.40, 0.29
HSL	30°, 33%, 57%
HSV	30°, 40%, 71%
XYZ	31.8882, 31.1573, 18.5206
YIQ	151.5460, 33.3330, -3.8750

Conversions

Conversions Part 2

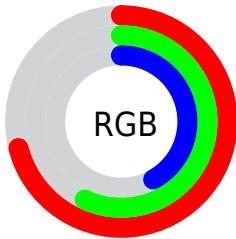
Format	Color
RYB	179, 181, 108
Decimal	11899244
CIELab	62.64, 8.46, 24.77
CIElCh	63, 26.178, 71.137
Yxy	31.1573, 0.3909, 0.3820
Android (android.graphics.Color)	4290089324 (0xFFB5916C)
YUV	151.5460, -21.4682, 25.8312
Hunter-Lab	55.8187, 4.2912, 19.4007

Details

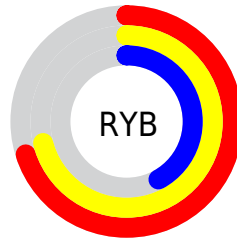
The Hex color **B5916C** is a dark color, and the websafe version is hex **CC9966**. A complement of this color would be **6C90B5**, and the grayscale version is **989898**.

A 20% lighter version of the original color is **EEC7A0**, and **7F5F3C** is the 20% darker color. If you saturate the color by 10%, you get **B5885A**, and if you desaturate by 10%, it is **B59A7E**.

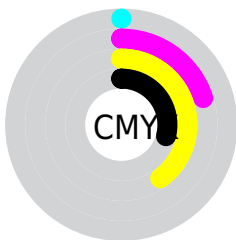
Distribution



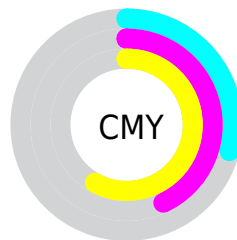
- Red (71%)
- Green (57%)
- Blue (42%)



- Red (70%)
- Yellow (71%)
- Blue (42%)



- Cyan (0%)
- Magenta (20%)
- Yellow (40%)
- Black (29%)



- Cyan (29%)
- Magenta (43%)
- Yellow (58%)

Brightness & Saturation Gradients

These gradients show how the Hex color B5916C changes by changing the brightness by 10 percent. The first figure shows a shift by +10% for each color and the second figure -10%.

Similar to the brightness gradients but the following saturation gradients show a change of the Hex color B5916C by changing the saturation by 10% instead.

 B5916C

 B5916C

FFFFFF

 997753

 EEC7A0

 7F5F3C

 FFE3BB

 644726

 FFFFD7

 4B3110

 FFFFF3

 331C00

 1B0300

 000000

 B5916C

 B5916C

 B5885A

 B59A7E

 B57F48

 B5A390

 B57636

 B5ACA2

 B56D24

 B5B5B4

 B56411

 B5BEC7

 B55C00

 B5C7D9

 B5CFEB

 B5D8FD

 B5E1FF

Harmonies

Analogous

The Analogous color harmony consists of three colors that are next to each other on the color wheel.



C38A7A



B5916C



9F996A

Triad

The Triadic color harmony groups three colors that are evenly spaced from another and form a triangle on the color wheel.



B5916C



55A4A0



A68FBB

Complementary

The Complementary color scheme is a pair of colors which are on the opposite of each other on the color wheel.



B5916C



6C90B5

Split Complementary

Split-complementary colors differ from the complementary color scheme. The scheme consists of three colors, the original color and two neighbors of the complement color.



8697C5



B5916C



50A3B5

Square

The Square scheme is like the rectangle color scheme, but the four colors are evenly spaced on the color wheel.



B5916C



6BA388



659EC3



BC88A7

Rectangle

The Rectangle color scheme consists of four colors that form a rectangle on the color wheel.



B5916C



8E9D6F



659EC3



9C91BF

Sweetspot

The Sweet Spot groups the original color and five complimentary colors.



B5916C



EBDDCE



B56C91



756D65



F5F5F5



757575

Same Dimension

The Same Dimension uses a secret algorithm to generate beautiful new colors.



B5916C



EBB37A



B5B56C



595550



994E00



1A0D00

Inverse Universe

The Inverse Universe completely reimagines the original color for something new.



6C90B5



7AB2EB



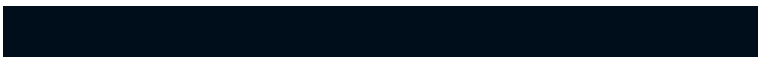
6C6CB5



505559



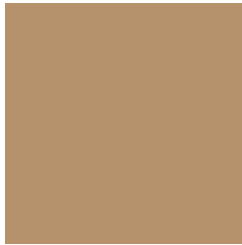
004B99



000D1A

Previews

White Background



This preview shows how the Hex color B5916C looks on a white background.

Color Contrast Check

Large Text (above 18pt) WCAG AA × Fail

Any Text WCAG AA × Fail

Large Text (above 18pt) WCAG AAA × Fail

Any Text WCAG AAA × Fail

Black Background



Color Contrast Check

Large Text (above 18pt) WCAG AA ✓ Pass

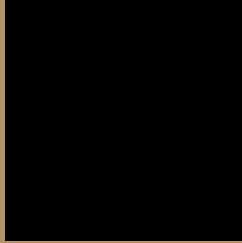
Any Text WCAG AA ✓ Pass

Large Text (above 18pt) WCAG AAA ✓ Pass

Any Text WCAG AAA ✓ Pass

If you want to check with other color combinations, try the [Color Contrast Checker](#).

Hex B5916C Background



This preview shows how black text looks on a background with the Hex color B5916C.



This preview shows how white text looks on a background with the Hex color B5916C.

Color Blindness Simulation

Color vision deficiency is a very complex topic, and I could not describe the different causes any better than Wikipedia does, so if you want to learn more, you should check out their [article about color blindness](#).

Dichromacy



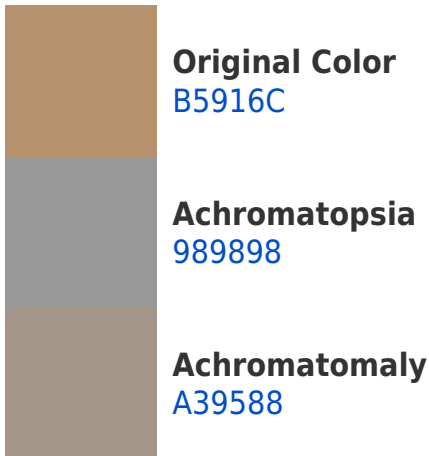


Tritanopia
B98B96

Trichromacy



Monochromacy



CSS Examples

Text

The CSS property to change the color of the text to Hex B5916C is called "color". The color property can be set on classes, ids or directly on the HTML element.

This example shows how text in the color #B5916C looks like.

```
.text, #text, p{  
    color:#B5916C  
}
```

If you want to add a text shadow in that color use the text-shadow property, you can generate a text shadow directly with our [CSS Text Shadow Generator](#).

Here you see how black text with a 4 pixel #B5916C colored shadow looks like.

```
.shadow{ text-shadow: 4px 4px 2px #B5916C
}
```

Border

The CSS property to change the border of an element to Hex B5916C is called "border". The border property can be set on classes, ids or directly on the HTML element.

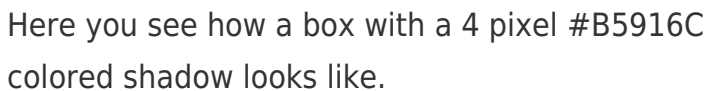
This example shows the color as border, it can be applied via the CSS property "border" or "border-color".

```
.border, #border, table{ border:4px solid
#B5916C }
```

If only the border color should be changed use the property `border-color`.

```
.border{ border-color:#B5916C }
```

If you want to add a box shadow in that color use:



Here you see how a box with a 4 pixel #B5916C colored shadow looks like.

```
.boxshadow{ -moz-box-shadow:4px 4px 4px  
4px #B5916C; -webkit-box-shadow:4px 4px  
4px 4px #B5916C; box-shadow:4px 4px 4px  
4px #B5916C }
```

Background

The CSS property to change the background color of an element to Hex B5916C is called "background". The background property can be set on classes, ids or directly on the HTML element.

```
.background, #background, body{  
background:#B5916C }
```

If only the background color should be changed can be used:

```
.background{ background-color:#B5916C }
```

This example shows the color as background, it is applied via the CSS property "background".

To optimize and compress your CSS code, you can use our [online CSS compressor and optimizer](#) based on csstidy. If you want to create a linear or radial gradient as background or border, check our [CSS Gradient Generator](#).

Hey! You found this booklet interesting? Support Converting Colors with the new Membership Option!

The pro membership hides all ads, plus gives you double the colors in the color bucket, and more awesome pro features!

[Learn more, Memberships starting at \\$2.50/m!](#)

**Follow me
on Twitter!**

@ConvertingColor