

# Converting Colors

Hex(B5989E)

Have a look what the booklet for  
Hex(B5989E) contains.

<b>Hex(B5989E)</b> .....	3
<i><b>Conversions</b></i> .....	4
<i><b>Details</b></i> .....	6
<i><b>Harmonies</b></i> .....	11
<i><b>Previews</b></i> .....	23
<i><b>Color Blindness Simulation</b></i> .....	26
<i><b>CSS Examples</b></i> .....	29

# **Color**

**Hex(B5989E)**

# Conversions

## Conversions Part 1

Format	Color
Hex	B5989E
RGB	181, 152, 158
RGB Percent	71%, 60%, 62%
CMY	0.2902, 0.4039, 0.3804
CMYK	0.00, 0.16, 0.13, 0.29
HSL	348°, 16%, 65%
HSV	348°, 16%, 71%
XYZ	36.4558, 34.7489, 37.1335
YIQ	161.3550, 15.3580, 8.0140

# Conversions

## Conversions Part 2

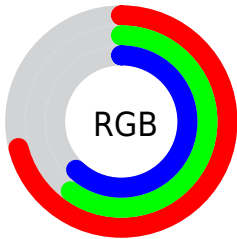
<b>Format</b>	<b>Color</b>
<a href="#">RYB</a>	<a href="#">181, 152, 158</a>
Decimal	<a href="#">11901086</a>
CIELab	<a href="#">65.55, 11.76, 0.88</a>
CIELCh	<a href="#">66, 11.796, 4.254</a>
Yxy	<a href="#">34.7489, 0.3365, 0.3207</a>
Android (android.graphics.Color)	<a href="#">4290091166</a> ( <a href="#">0xFFB5989E</a> )
YUV	<a href="#">161.3550, -1.6540, 17.2287</a>
Hunter-Lab	<a href="#">58.9482, 7.2321, 3.9149</a>

# Details

The Hex color **B5989E** is a light color, and the websafe version is hex **CC9999**. A complement of this color would be **98B5AF**, and the grayscale version is **A1A1A1**.

A 20% lighter version of the original color is **EDCED5**, and **80656B** is the 20% darker color. If you saturate the color by 10%, you get **B58690**, and if you desaturate by 10%, it is **B5AAAC**.

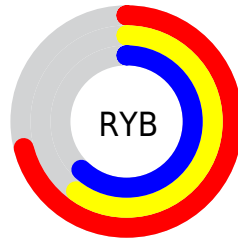
# Distribution



Red (71%)

Green (60%)

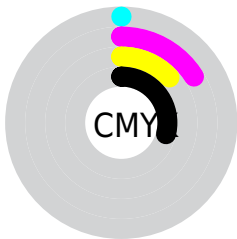
Blue (62%)



Red (71%)

Yellow (60%)

Blue (62%)

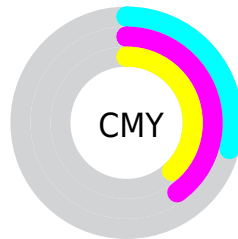


Cyan (0%)

Magenta (16%)

Yellow (13%)

Black (29%)



Cyan (29%)

Magenta (40%)

Yellow (38%)

# Brightness & Saturation Gradients

These gradients show how the Hex color B5989E changes by changing the brightness by 10 percent. The first figure shows a shift by +10% for each color and the second figure -10%.

Similar to the brightness gradients but the following saturation gradients show a change of the Hex color B5989E by changing the saturation by 10% instead.



 B5989E

 B5989E

FFFFFF

 9A7E84

 EDCED5

 80656B

 FFEBF1

 674D53

 4E363C

 372126

 220B11

 000000

 B5989E

 B5989E

 B58690

 B5AAAC

 B57481

 B5BCBB

 B56273

 B5CEC9

 B55065

 B5E0D7

 B53D56

 B5F3E6

 B52B48

 B5FFF4

 B5193A

 B5FFFF

 B5072B

 B50025

# Harmonies

## Analogous

The Analogous color harmony consists of three colors that are next to each other on the color wheel.



AF99A9



B5989E



B59994

# Triad

The Triadic color harmony groups three colors that are evenly spaced from another and form a triangle on the color wheel.



B5989E



9AA28E



8AA3B2

# Complementary

The Complementary color scheme is a pair of colors which are on the opposite of each other on the color wheel.



B5989E



98B5AF

# Split Complementary

Split-complementary colors differ from the complementary color scheme. The scheme consists of three colors, the original color and two neighbors of the complement color.



85A5AB



B5989E



8FA596

# Square

The Square scheme is like the rectangle color scheme, but the four colors are evenly spaced on the color wheel.



B5989E



A69F8A



86A6A0



96A0B4

# Rectangle

The Rectangle color scheme consists of four colors that form a rectangle on the color wheel.



B5989E



B29A8E



86A6A0



88A4B0



# Sweetspot

The Sweet Spot groups the original color and five complimentary colors.



B5989E



EBDFE1



AF98B5



756E70



F5F5F5



757575



# Same Dimension

The Same Dimension uses a secret algorithm to generate beautiful new colors.



B5989E



EBBEC7



B5A098



595052



990020



1A0005



# Inverse Universe

The Inverse Universe completely reimagines the original color for something new.



B5989E



EBBEC7



98ADB5



595052



990020

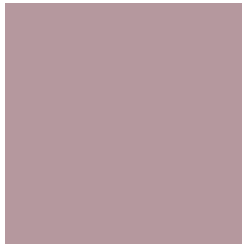


1A0005



# Previews

## White Background



This preview shows how the Hex color B5989E looks on a white background.

## Color Contrast Check

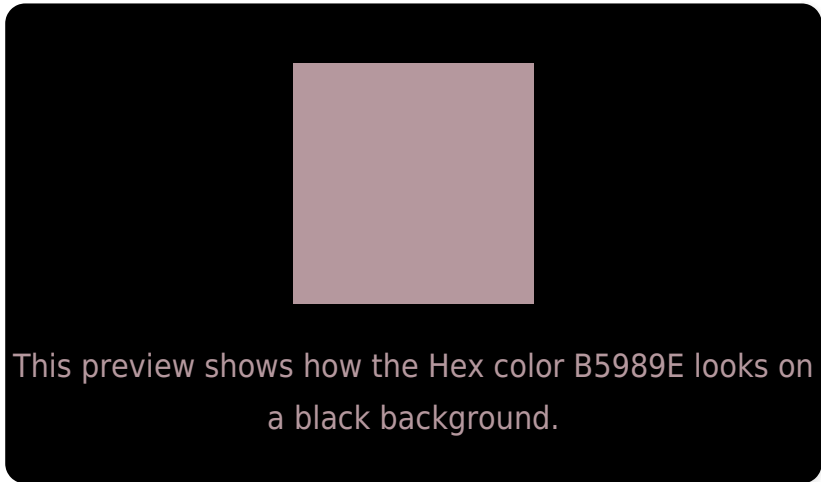
Large Text (above 18pt) WCAG AA × Fail

Any Text WCAG AA × Fail

Large Text (above 18pt) WCAG AAA × Fail

Any Text WCAG AAA × Fail

# Black Background



## Color Contrast Check

Large Text (above 18pt) WCAG AA ✓ Pass

Any Text WCAG AA ✓ Pass

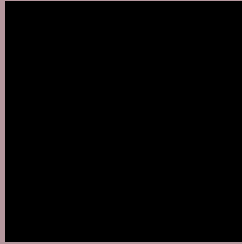
Large Text (above 18pt) WCAG AAA ✓ Pass

Any Text WCAG AAA ✓ Pass

If you want to check with other color combinations, try the [Color Contrast Checker](#).



## Hex B5989E Background



This preview shows how black text looks on a background with the Hex color B5989E.



This preview shows how white text looks on a background with the Hex color B5989E.

# Color Blindness Simulation

Color vision deficiency is a very complex topic, and I could not describe the different causes any better than Wikipedia does, so if you want to learn more, you should check out their [article about color blindness](#).

## Dichromacy



**Original Color**  
B5989E

**Protanopia**  
A19FA2

**Deuteranopia**  
AF9A9E



**Tritanopia**  
B697A3

# Trichromacy



**Original Color**  
B5989E

**Protanomaly**  
A89CA1

**Deuteranomaly**  
B1999E

**Tritanomaly**  
B697A1

# Monochromacy



**Original Color**  
B5989E

**Achromatopsia**  
A1A1A1

**Achromatomaly**  
A89EA0

# CSS Examples

## Text

The CSS property to change the color of the text to Hex B5989E is called "color". The color property can be set on classes, ids or directly on the HTML element.

This example shows how text in the color #B5989E looks like.

```
.text, #text, p{  
    color:#B5989E  
}
```

If you want to add a text shadow in that color use the text-shadow property, you can generate a text shadow directly with our [CSS Text Shadow Generator](#).

Here you see how black text with a 4 pixel #B5989E colored shadow looks like.

```
.shadow{ text-shadow: 4px 4px 2px #B5989E
}
```

## Border

The CSS property to change the border of an element to Hex B5989E is called "border". The border property can be set on classes, ids or directly on the HTML element.

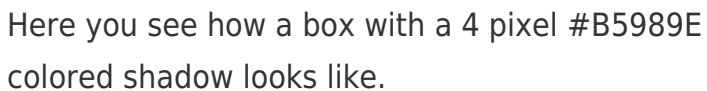
This example shows the color as border, it can be applied via the CSS property "border" or "border-color".

```
.border, #border, table{ border:4px solid
#B5989E }
```

If only the border color should be changed use the property `border-color`.

```
.border{ border-color:#B5989E }
```

If you want to add a box shadow in that color use:



Here you see how a box with a 4 pixel #B5989E colored shadow looks like.

```
.boxshadow{ -moz-box-shadow:4px 4px 4px  
4px #B5989E; -webkit-box-shadow:4px 4px  
4px 4px #B5989E; box-shadow:4px 4px 4px  
4px #B5989E }
```

# Background

The CSS property to change the background color of an element to Hex B5989E is called "background". The background property can be set on classes, ids or directly on the HTML element.

```
.background, #background, body{  
background:#B5989E }
```

If only the background color should be changed can be used:

```
.background{ background-color:#B5989E }
```

This example shows the color as background, it is applied via the CSS property "background".

To optimize and compress your CSS code, you can use our [online CSS compressor and optimizer](#) based on csstidy. If you want to create a linear or radial gradient as background or border, check our [CSS Gradient Generator](#).



Hey! You found this booklet interesting? Support Converting Colors with the new Membership Option!

The pro membership hides all ads, plus gives you double the colors in the color bucket, and more awesome pro features!

**[Learn more, Memberships starting at \\$2.50/m!](#)**

**Follow me  
on Twitter!**

@ConvertingColor