

Converting Colors

Hex(B598A6)

Have a look what the booklet for
Hex(B598A6) contains.

Hex(B598A6)	3
<i>Conversions</i>	4
<i>Details</i>	6
<i>Harmonies</i>	11
<i>Previews</i>	23
<i>Color Blindness Simulation</i>	26
<i>CSS Examples</i>	29

Color

Hex(B598A6)

Conversions

Conversions Part 1

Format	Color
Hex	B598A6
RGB	181, 152, 166
RGB Percent	71%, 60%, 65%
CMY	0.2902, 0.4039, 0.3490
CMYK	0.00, 0.16, 0.08, 0.29
HSL	331°, 16%, 65%
HSV	331°, 16%, 71%
XYZ	37.1672, 35.0334, 40.8796
YIQ	162.2670, 12.7900, 10.5020

Conversions

Conversions Part 2

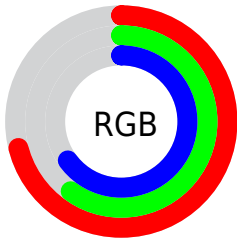
Format	Color
RYB	181, 152, 166
Decimal	11901094
CIELab	65.77, 13.15, -3.29
CIElCh	66, 13.560, 345.953
Yxy	35.0334, 0.3287, 0.3098
Android (android.graphics.Color)	4290091174 (0xFFB598A6)
YUV	162.2670, 1.8404, 16.4288
Hunter-Lab	59.1890, 8.5067, 0.4830

Details

The Hex color **B598A6** is a light color, and the websafe version is hex **CC9999**. A complement of this color would be **98B5A7**, and the grayscale version is **A2A2A2**.

A 20% lighter version of the original color is **EDCEDD**, and **806572** is the 20% darker color. If you saturate the color by 10%, you get **B5869D**, and if you desaturate by 10%, it is **B5AAAF**.

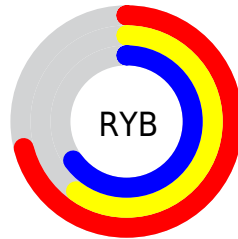
Distribution



Red (71%)

Green (60%)

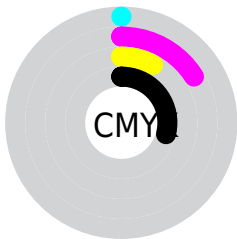
Blue (65%)



Red (71%)

Yellow (60%)

Blue (65%)

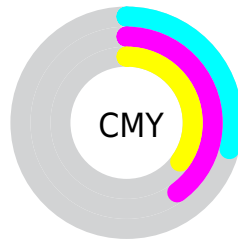


Cyan (0%)

Magenta (16%)

Yellow (8%)

Black (29%)



Cyan (29%)

Magenta (40%)

Yellow (35%)

Brightness & Saturation Gradients

These gradients show how the Hex color B598A6 changes by changing the brightness by 10 percent. The first figure shows a shift by +10% for each color and the second figure -10%.

Similar to the brightness gradients but the following saturation gradients show a change of the Hex color B598A6 by changing the saturation by 10% instead.



B598A6



B598A6

FFFFFF



9A7E8C



EDCEDD



806572



FFEBFA



674D5A



4E3642



37202C



220B18



000000



B598A6



B598A6



B5869D



B5AAAF

 B57493

 B5BCB9

 B5628A

 B5CEC2

 B55081

 B5E0CB

 B53D77

 B5F3D5

 B52B6E

 B5FFDE

 B51964

 B5FFE8

 B5075B

 B5FFF1

 B50057

 B5FFFA

Harmonies

Analogous

The Analogous color harmony consists of three colors that are next to each other on the color wheel.



AA9BB1



B598A6



BA989A

Triad

The Triadic color harmony groups three colors that are evenly spaced from another and form a triangle on the color wheel.



B598A6



A3A188



82A6B1

Complementary

The Complementary color scheme is a pair of colors which are on the opposite of each other on the color wheel.



B598A6



98B5A7

Split Complementary

Split-complementary colors differ from the complementary color scheme. The scheme consists of three colors, the original color and two neighbors of the complement color.



81A7A6



B598A6



95A48F

Square

The Square scheme is like the rectangle color scheme, but the four colors are evenly spaced on the color wheel.



B598A6



AF9D88



88A799



8CA3B7

Rectangle

The Rectangle color scheme consists of four colors that form a rectangle on the color wheel.



B598A6



B99992



88A799



81A6AE

Sweetspot

The Sweet Spot groups the original color and five complimentary colors.



B598A6



EBDFE5



A798B5



756E72



F5F5F5



757575

Same Dimension

The Same Dimension uses a secret algorithm to generate beautiful new colors.



B598A6



EBBED4



B59898



595055



99004A



1A000C

Inverse Universe

The Inverse Universe completely reimagines the original color for something new.



B598A6



EBBED4



98B5B5



595055



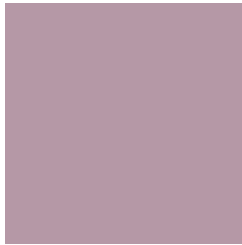
99004A



1A000C

Previews

White Background



This preview shows how the Hex color B598A6 looks on a white background.

Color Contrast Check

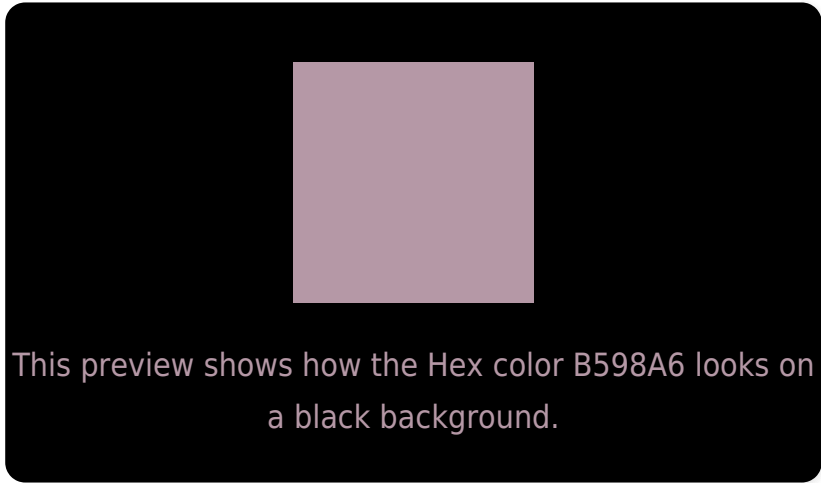
Large Text (above 18pt) WCAG AA × Fail

Any Text WCAG AA × Fail

Large Text (above 18pt) WCAG AAA × Fail

Any Text WCAG AAA × Fail

Black Background



Color Contrast Check

Large Text (above 18pt) WCAG AA ✓ Pass

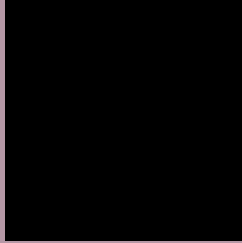
Any Text WCAG AA ✓ Pass

Large Text (above 18pt) WCAG AAA ✓ Pass

Any Text WCAG AAA ✓ Pass

If you want to check with other color combinations, try the [Color Contrast Checker](#).

Hex B598A6 Background



This preview shows how black text looks on a background with the Hex color B598A6.

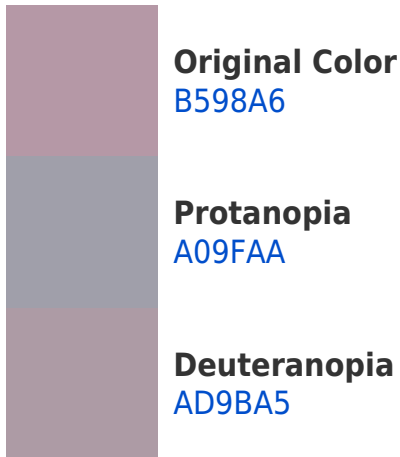


This preview shows how white text looks on a background with the Hex color B598A6.

Color Blindness Simulation

Color vision deficiency is a very complex topic, and I could not describe the different causes any better than Wikipedia does, so if you want to learn more, you should check out their [article about color blindness](#).

Dichromacy





Tritanopia
B598A4

Trichromacy



Original Color
B598A6

Protanomaly
A89CA9

Deuteranomaly
B09AA5

Tritanomaly
B598A5

Monochromacy



Original Color
B598A6

Achromatopsia
A2A2A2

Achromatomaly
A99EA3

CSS Examples

Text

The CSS property to change the color of the text to Hex B598A6 is called "color". The color property can be set on classes, ids or directly on the HTML element.

This example shows how text in the color #B598A6 looks like.

```
.text, #text, p{  
    color:#B598A6  
}
```

If you want to add a text shadow in that color use the text-shadow property, you can generate a text shadow directly with our [CSS Text Shadow Generator](#).

Here you see how black text with a 4 pixel #B598A6 colored shadow looks like.

```
.shadow{ text-shadow: 4px 4px 2px #B598A6
}
```

Border

The CSS property to change the border of an element to Hex B598A6 is called "border". The border property can be set on classes, ids or directly on the HTML element.

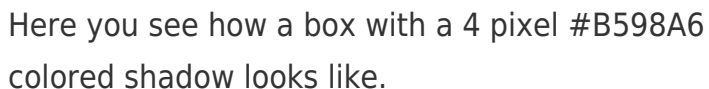
This example shows the color as border, it can be applied via the CSS property "border" or "border-color".

```
.border, #border, table{ border:4px solid
#B598A6 }
```

If only the border color should be changed use the property `border-color`.

```
.border{ border-color:#B598A6 }
```

If you want to add a box shadow in that color use:



Here you see how a box with a 4 pixel #B598A6 colored shadow looks like.

```
.boxshadow{ -moz-box-shadow:4px 4px 4px  
4px #B598A6; -webkit-box-shadow:4px 4px  
4px 4px #B598A6; box-shadow:4px 4px 4px  
4px #B598A6 }
```

Background

The CSS property to change the background color of an element to Hex B598A6 is called "background". The background property can be set on classes, ids or directly on the HTML element.

```
.background, #background, body{  
background:#B598A6 }
```

If only the background color should be changed can be used:

```
.background{ background-color:#B598A6 }
```

This example shows the color as background, it is applied via the CSS property "background".

To optimize and compress your CSS code, you can use our [online CSS compressor and optimizer](#) based on csstidy. If you want to create a linear or radial gradient as background or border, check our [CSS Gradient Generator](#).

Hey! You found this booklet interesting? Support Converting Colors with the new Membership Option!

The pro membership hides all ads, plus gives you double the colors in the color bucket, and more awesome pro features!

[Learn more, Memberships starting at \\$2.50/m!](#)

**Follow me
on Twitter!**

@ConvertingColor