

Converting Colors

Hex(B5999E)

Have a look what the booklet for
Hex(B5999E) contains.

Hex(B5999E)	3
<i>Conversions</i>	4
<i>Details</i>	6
<i>Harmonies</i>	11
<i>Previews</i>	23
<i>Color Blindness Simulation</i>	26
<i>CSS Examples</i>	29

Color

Hex(B5999E)

Conversions

Conversions Part 1

Format	Color
Hex	B5999E
RGB	181, 153, 158
RGB Percent	71%, 60%, 62%
CMY	0.2902, 0.4000, 0.3804
CMYK	0.00, 0.15, 0.13, 0.29
HSL	349°, 16%, 65%
HSV	349°, 15%, 71%
XYZ	36.6188, 35.0748, 37.1879
YIQ	161.9420, 15.0830, 7.4910

Conversions

Conversions Part 2

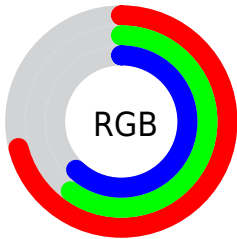
Format	Color
RYB	181, 153, 158
Decimal	11901342
CIELab	65.81, 11.21, 1.25
CIELCh	66, 11.278, 6.340
Yxy	35.0748, 0.3363, 0.3221
Android (android.graphics.Color)	4290091422 (0xFFB5999E)
YUV	161.9420, -1.9434, 16.7139
Hunter-Lab	59.2240, 6.7264, 4.2275

Details

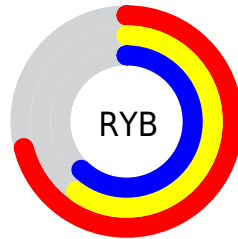
The Hex color **B5999E** is a light color, and the websafe version is hex **CC9999**. A complement of this color would be **99B5B0**, and the grayscale version is **A2A2A2**.

A 20% lighter version of the original color is **EDCFD5**, and **80666B** is the 20% darker color. If you saturate the color by 10%, you get **B5878F**, and if you desaturate by 10%, it is **B5ABAD**.

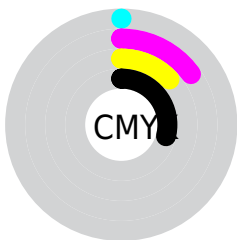
Distribution



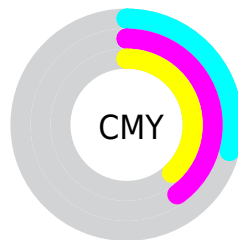
- Red (71%)
- Green (60%)
- Blue (62%)



- Red (71%)
- Yellow (60%)
- Blue (62%)



- Cyan (0%)
- Magenta (15%)
- Yellow (13%)
- Black (29%)



- Cyan (29%)
- Magenta (40%)
- Yellow (38%)

Brightness & Saturation Gradients

These gradients show how the Hex color B5999E changes by changing the brightness by 10 percent. The first figure shows a shift by +10% for each color and the second figure -10%.

Similar to the brightness gradients but the following saturation gradients show a change of the Hex color B5999E by changing the saturation by 10% instead.



B5999E



B5999E

FFFFFF



9A7F84



EDCFD5



80666B



FFECF1



674E53



4E373C



372126



220C11



000000



B5999E



B5999E



B5878F



B5ABAD

 B57580

 B5BDBC

 B56371

 B5CFCB

 B55163

 B5E1D9

 B53E54

 B5F4E8

 B52C45

 B5FFF7

 B51A36

 B5FFFF

 B50827

 B50020

Harmonies

Analogous

The Analogous color harmony consists of three colors that are next to each other on the color wheel.



AF9AA8



B5999E



B59A94

Triad

The Triadic color harmony groups three colors that are evenly spaced from another and form a triangle on the color wheel.



B5999E



9AA38F



8DA3B2

Complementary

The Complementary color scheme is a pair of colors which are on the opposite of each other on the color wheel.



B5999E



99B5B0

Split Complementary

Split-complementary colors differ from the complementary color scheme. The scheme consists of three colors, the original color and two neighbors of the complement color.



87A5AB



B5999E



8FA597

Square

The Square scheme is like the rectangle color scheme, but the four colors are evenly spaced on the color wheel.



B5999E



A6A08C



88A6A2



98A0B4

Rectangle

The Rectangle color scheme consists of four colors that form a rectangle on the color wheel.



B5999E



B29C8F



88A6A2



8AA4B0

Sweetspot

The Sweet Spot groups the original color and five complimentary colors.



B5999E



EBDFE1



B099B5



756E70



F5F5F5



757575

Same Dimension

The Same Dimension uses a secret algorithm to generate beautiful new colors.



B5999E



EBBEC6



B5A299



595052



99001B



1A0005

Inverse Universe

The Inverse Universe completely reimagines the original color for something new.



B5999E



EBBEC6



99ACB5



595052



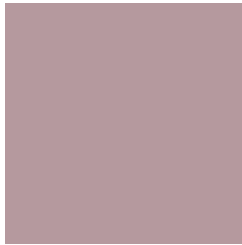
99001B



1A0005

Previews

White Background



This preview shows how the Hex color B5999E looks on a white background.

Color Contrast Check

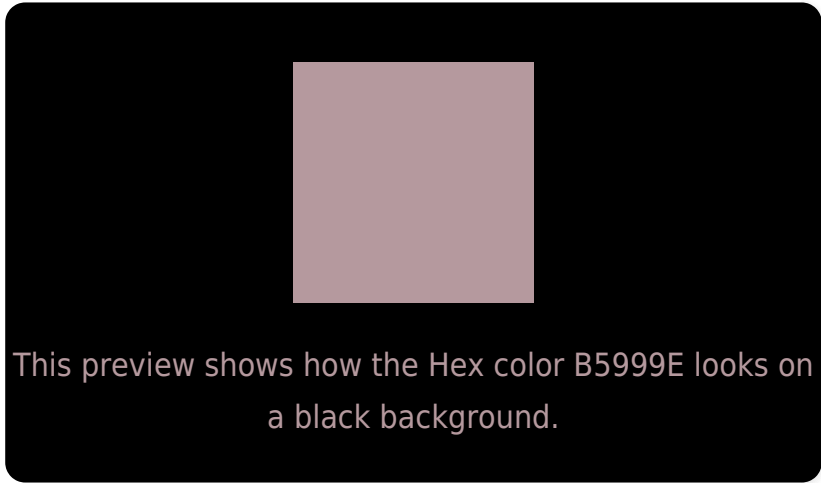
Large Text (above 18pt) WCAG AA × Fail

Any Text WCAG AA × Fail

Large Text (above 18pt) WCAG AAA × Fail

Any Text WCAG AAA × Fail

Black Background



Color Contrast Check

Large Text (above 18pt) WCAG AA ✓ Pass

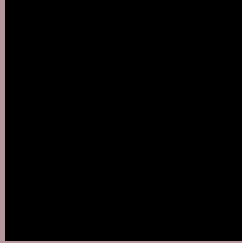
Any Text WCAG AA ✓ Pass

Large Text (above 18pt) WCAG AAA ✓ Pass

Any Text WCAG AAA ✓ Pass

If you want to check with other color combinations, try the [Color Contrast Checker](#).

Hex B5999E Background



This preview shows how black text looks on a background with the Hex color B5999E.



This preview shows how white text looks on a background with the Hex color B5999E.

Color Blindness Simulation

Color vision deficiency is a very complex topic, and I could not describe the different causes any better than Wikipedia does, so if you want to learn more, you should check out their [article about color blindness](#).

Dichromacy



Original Color
B5999E

Protanopia
A29FA2

Deuteranopia
B09B9E



Tritanopia
B698A4

Trichromacy



Original Color
B5999E

Protanomaly
A99DA1

Deuteranomaly
B29A9E

Tritanomaly
B698A2

Monochromacy



Original Color
B5999E

Achromatopsia
A2A2A2

Achromatomaly
A99FA1

CSS Examples

Text

The CSS property to change the color of the text to Hex B5999E is called "color". The color property can be set on classes, ids or directly on the HTML element.

This example shows how text in the color #B5999E looks like.

```
.text, #text, p{  
    color:#B5999E  
}
```

If you want to add a text shadow in that color use the text-shadow property, you can generate a text shadow directly with our [CSS Text Shadow Generator](#).

Here you see how black text with a 4 pixel #B5999E colored shadow looks like.

```
.shadow{ text-shadow: 4px 4px 2px #B5999E
}
```

Border

The CSS property to change the border of an element to Hex B5999E is called "border". The border property can be set on classes, ids or directly on the HTML element.

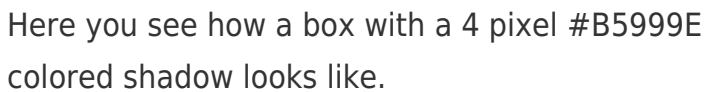
This example shows the color as border, it can be applied via the CSS property "border" or "border-color".

```
.border, #border, table{ border:4px solid
#B5999E }
```

If only the border color should be changed use the property `border-color`.

```
.border{ border-color:#B5999E }
```

If you want to add a box shadow in that color use:



Here you see how a box with a 4 pixel #B5999E colored shadow looks like.

```
.boxshadow{ -moz-box-shadow:4px 4px 4px  
4px #B5999E; -webkit-box-shadow:4px 4px  
4px 4px #B5999E; box-shadow:4px 4px 4px  
4px #B5999E }
```

Background

The CSS property to change the background color of an element to Hex B5999E is called "background". The background property can be set on classes, ids or directly on the HTML element.

```
.background, #background, body{  
background:#B5999E }
```

If only the background color should be changed can be used:

```
.background{ background-color:#B5999E }
```

This example shows the color as background, it is applied via the CSS property "background".

To optimize and compress your CSS code, you can use our [online CSS compressor and optimizer](#) based on csstidy. If you want to create a linear or radial gradient as background or border, check our [CSS Gradient Generator](#).

Hey! You found this booklet interesting? Support Converting Colors with the new Membership Option!

The pro membership hides all ads, plus gives you double the colors in the color bucket, and more awesome pro features!

[Learn more, Memberships starting at \\$2.50/m!](#)

**Follow me
on Twitter!**

@ConvertingColor