

Converting Colors

Hex(B599A5)

Have a look what the booklet for
Hex(B599A5) contains.

Hex(B599A5)	3
<i>Conversions</i>	4
<i>Details</i>	6
<i>Harmonies</i>	11
<i>Previews</i>	23
<i>Color Blindness Simulation</i>	26
<i>CSS Examples</i>	29

Color

Hex(B599A5)

Conversions

Conversions Part 1

Format	Color
Hex	B599A5
RGB	181, 153, 165
RGB Percent	71%, 60%, 65%
CMY	0.2902, 0.4000, 0.3529
CMYK	0.00, 0.15, 0.09, 0.29
HSL	334°, 16%, 65%
HSV	334°, 15%, 71%
XYZ	37.2388, 35.3228, 40.4526
YIQ	162.7400, 12.8360, 9.6680

Conversions

Conversions Part 2

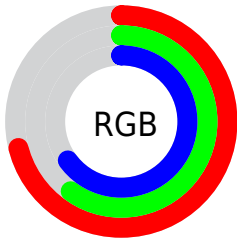
Format	Color
RYB	181, 153, 165
Decimal	11901349
CIELab	66.00, 12.42, -2.40
CIElCh	66, 12.651, 349.065
Yxy	35.3228, 0.3295, 0.3126
Android (android.graphics.Color)	4290091429 (0xFFB599A5)
YUV	162.7400, 1.1142, 16.0140
Hunter-Lab	59.4330, 7.8346, 1.2479

Details

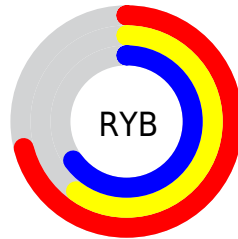
The Hex color **B599A5** is a light color, and the websafe version is hex **CC9999**. A complement of this color would be **99B5A9**, and the grayscale version is **A3A3A3**.

A 20% lighter version of the original color is **EDCFDC**, and **806671** is the 20% darker color. If you saturate the color by 10%, you get **B5879B**, and if you desaturate by 10%, it is **B5ABAF**.

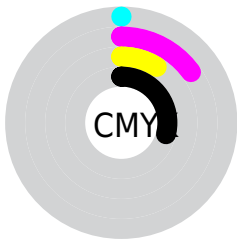
Distribution



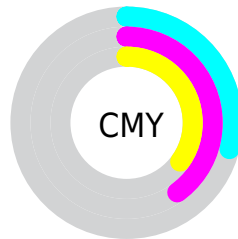
- Red (71%)
- Green (60%)
- Blue (65%)



- Red (71%)
- Yellow (60%)
- Blue (65%)



- Cyan (0%)
- Magenta (15%)
- Yellow (9%)
- Black (29%)



- Cyan (29%)
- Magenta (40%)
- Yellow (35%)

Brightness & Saturation Gradients

These gradients show how the Hex color B599A5 changes by changing the brightness by 10 percent. The first figure shows a shift by +10% for each color and the second figure -10%.

Similar to the brightness gradients but the following saturation gradients show a change of the Hex color B599A5 by changing the saturation by 10% instead.



B599A5



B599A5

FFFFFF



9A7F8B



EDCFDC



806671



FFECF8



674E59



4E3741



37212B



220C17



000000



B599A5



B599A5



B5879B



B5ABAF

 B57590

 B5BDBA

 B56386

 B5CFC4

 B5517C

 B5E1CE

 B53E71

 B5F4D9

 B52C67

 B5FFE3

 B51A5D

 B5FFED

 B50852

 B5FFF8

 B5004E

 B5FFFF

Harmonies

Analogous

The Analogous color harmony consists of three colors that are next to each other on the color wheel.



AB9BAF



B599A5



B99999

Triad

The Triadic color harmony groups three colors that are evenly spaced from another and form a triangle on the color wheel.



B599A5



A2A28B



86A6B1

Complementary

The Complementary color scheme is a pair of colors which are on the opposite of each other on the color wheel.



B599A5



99B5A9

Split Complementary

Split-complementary colors differ from the complementary color scheme. The scheme consists of three colors, the original color and two neighbors of the complement color.



84A7A7



B599A5



95A591

Square

The Square scheme is like the rectangle color scheme, but the four colors are evenly spaced on the color wheel.



B599A5



AE9E8A



89A79C



8FA3B6

Rectangle

The Rectangle color scheme consists of four colors that form a rectangle on the color wheel.



B599A5



B89A93



89A79C



84A6AE

Sweetspot

The Sweet Spot groups the original color and five complimentary colors.



B599A5



EBDFE4



A999B5



756E71



F5F5F5



757575

Same Dimension

The Same Dimension uses a secret algorithm to generate beautiful new colors.



B599A5



EBBED1



B59B99



595054



990042



1A000B

Inverse Universe

The Inverse Universe completely reimagines the original color for something new.



B599A5



EBBED1



99B3B5



595054



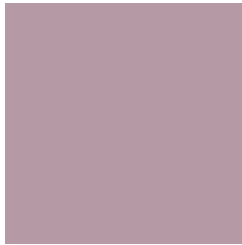
990042



1A000B

Previews

White Background



This preview shows how the Hex color B599A5 looks on a white background.

Color Contrast Check

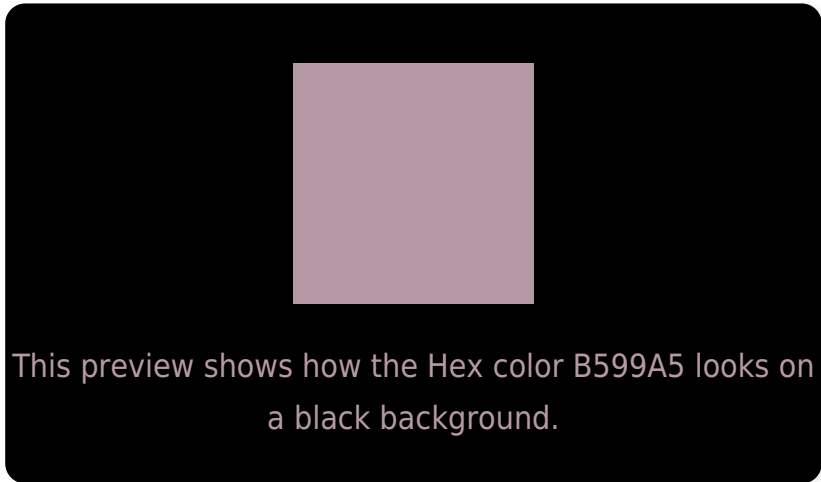
Large Text (above 18pt) WCAG AA × Fail

Any Text WCAG AA × Fail

Large Text (above 18pt) WCAG AAA × Fail

Any Text WCAG AAA × Fail

Black Background



Color Contrast Check

Large Text (above 18pt) WCAG AA ✓ Pass

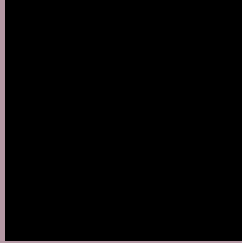
Any Text WCAG AA ✓ Pass

Large Text (above 18pt) WCAG AAA ✓ Pass

Any Text WCAG AAA ✓ Pass

If you want to check with other color combinations, try the [Color Contrast Checker](#).

Hex B599A5 Background



This preview shows how black text looks on a background with the Hex color B599A5.



This preview shows how white text looks on a background with the Hex color B599A5.

Color Blindness Simulation

Color vision deficiency is a very complex topic, and I could not describe the different causes any better than Wikipedia does, so if you want to learn more, you should check out their [article about color blindness](#).

Dichromacy



Original Color
B599A5

Protanopia
A1A0A9

Deuteranopia
AE9CA5



Tritanopia
B599A5

Trichromacy



Original Color
B599A5

Protanomaly
A89DA8

Deuteranomaly
B19BA5

Tritanomaly
B599A5

Monochromacy



Original Color
B599A5

Achromatopsia
A3A3A3

Achromatomaly
AA9FA4

CSS Examples

Text

The CSS property to change the color of the text to Hex B599A5 is called "color". The color property can be set on classes, ids or directly on the HTML element.

This example shows how text in the color #B599A5 looks like.

```
.text, #text, p{  
    color:#B599A5  
}
```

If you want to add a text shadow in that color use the text-shadow property, you can generate a text shadow directly with our [CSS Text Shadow Generator](#).

Here you see how black text with a 4 pixel #B599A5 colored shadow looks like.

```
.shadow{ text-shadow: 4px 4px 2px #B599A5
}
```

Border

The CSS property to change the border of an element to Hex B599A5 is called "border". The border property can be set on classes, ids or directly on the HTML element.

This example shows the color as border, it can be applied via the CSS property "border" or "border-color".

```
.border, #border, table{ border:4px solid
#B599A5 }
```

If only the border color should be changed use the property `border-color`.

```
.border{ border-color:#B599A5 }
```

If you want to add a box shadow in that color use:

Here you see how a box with a 4 pixel #B599A5 colored shadow looks like.

```
.boxshadow{ -moz-box-shadow:4px 4px 4px  
4px #B599A5; -webkit-box-shadow:4px 4px  
4px 4px #B599A5; box-shadow:4px 4px 4px  
4px #B599A5 }
```

Background

The CSS property to change the background color of an element to Hex B599A5 is called "background". The background property can be set on classes, ids or directly on the HTML element.

```
.background, #background, body{  
background:#B599A5 }
```

If only the background color should be changed can be used:

```
.background{ background-color:#B599A5 }
```

This example shows the color as background, it is applied via the CSS property "background".

To optimize and compress your CSS code, you can use our [online CSS compressor and optimizer](#) based on csstidy. If you want to create a linear or radial gradient as background or border, check our [CSS Gradient Generator](#).

Hey! You found this booklet interesting? Support Converting Colors with the new Membership Option!

The pro membership hides all ads, plus gives you double the colors in the color bucket, and more awesome pro features!

[Learn more, Memberships starting at \\$2.50/m!](#)

**Follow me
on Twitter!**

@ConvertingColor