

# Converting Colors

Hex(B59A99)

Have a look what the booklet for  
Hex(B59A99) contains.

<b>Hex(B59A99)</b> .....	3
<b><i>Conversions</i></b> .....	4
<b><i>Details</i></b> .....	6
<b><i>Harmonies</i></b> .....	11
<b><i>Previews</i></b> .....	23
<b><i>Color Blindness Simulation</i></b> .....	26
<b><i>CSS Examples</i></b> .....	29

**Color**

**Hex(B59A99)**

# Conversions

## Conversions Part 1

Format	Color
Hex	B59A99
RGB	181, 154, 153
RGB Percent	71%, 60%, 60%
CMY	0.2902, 0.3961, 0.4000
CMYK	0.00, 0.15, 0.15, 0.29
HSL	2°, 16%, 65%
HSV	2°, 15%, 71%
XYZ	36.3614, 35.2349, 35.0215
YIQ	161.9590, 16.4130, 5.4130

# Conversions

## Conversions Part 2

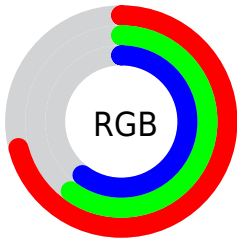
Format	Color
<a href="#">RYB</a>	<a href="#">181, 154, 153</a>
Decimal	<a href="#">11901593</a>
CIELab	<a href="#">65.93, 9.82, 4.23</a>
CIElCh	<a href="#">66, 10.691, 23.300</a>
Yxy	<a href="#">35.2349, 0.3410, 0.3305</a>
Android (android.graphics.Color)	<a href="#">4290091673 (0xFFB59A99)</a>
YUV	<a href="#">161.9590, -4.4168, 16.6990</a>
Hunter-Lab	<a href="#">59.3590, 5.4653, 6.5704</a>

# Details

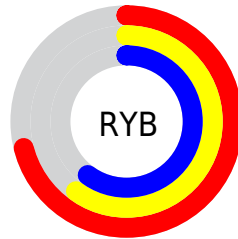
The Hex color **B59A99** is a light color, and the websafe version is hex **CC9999**. A complement of this color would be **99B4B5**, and the grayscale version is **A2A2A2**.

A 20% lighter version of the original color is **EDD0CF**, and **806766** is the 20% darker color. If you saturate the color by 10%, you get **B58987**, and if you desaturate by 10%, it is **B5ABAB**.

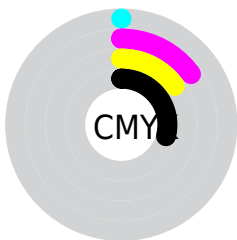
# Distribution



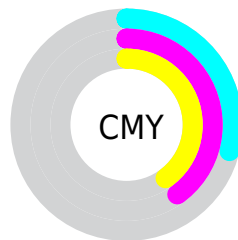
- Red (71%)
- Green (60%)
- Blue (60%)



- Red (71%)
- Yellow (60%)
- Blue (60%)



- Cyan (0%)
- Magenta (15%)
- Yellow (15%)
- Black (29%)



- Cyan (29%)
- Magenta (40%)
- Yellow (40%)

# Brightness & Saturation Gradients

These gradients show how the Hex color B59A99 changes by changing the brightness by 10 percent. The first figure shows a shift by +10% for each color and the second figure -10%.

Similar to the brightness gradients but the following saturation gradients show a change of the Hex color B59A99 by changing the saturation by 10% instead.





B59A99



B59A99

FFFFFF



9A807F



EDD0CF



806766



FFEDEB



674F4E



4E3837



372222



220D0C



000000



B59A99



B59A99



B58987



B5ABAB

 B57775

 B5BDBD

 B56663

 B5CECF

 B55451

 B5E0E1

 B5433E

 B5F1F4

 B5312C

 B5FFFF

 B5201A

 B50E08

 B50600

# Harmonies

## Analogous

The Analogous color harmony consists of three colors that are next to each other on the color wheel.



B39AA3



B59A99



B29C91

# Triad

The Triadic color harmony groups three colors that are evenly spaced from another and form a triangle on the color wheel.



B59A99



95A495



94A2B3

# Complementary

The Complementary color scheme is a pair of colors which are on the opposite of each other on the color wheel.



B59A99



99B4B5

# Split Complementary

Split-complementary colors differ from the complementary color scheme. The scheme consists of three colors, the original color and two neighbors of the complement color.



8BA4AF



B59A99



8CA69E

# Square

The Square scheme is like the rectangle color scheme, but the four colors are evenly spaced on the color wheel.



B59A99



A0A28F



88A6A7



9F9EB2

# Rectangle

The Rectangle color scheme consists of four colors that form a rectangle on the color wheel.



B59A99



AD9E8E



88A6A7



90A3B2



# Sweetspot

The Sweet Spot groups the original color and five complimentary colors.



B59A99



EBDFDF



B599B4



756F6E



F5F5F5



757575



# Same Dimension

The Same Dimension uses a secret algorithm to generate beautiful new colors.



B59A99



EBC0BE



B5A899



595150



990500



1A0100



# Inverse Universe

The Inverse Universe completely reimagines the original color for something new.



99B4B5



BEE9EB



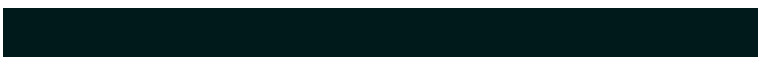
99A6B5



505959



009499

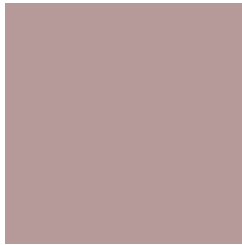


00191A



# Previews

## White Background



This preview shows how the Hex color B59A99 looks on a white background.

## Color Contrast Check

Large Text (above 18pt) WCAG AA × Fail

Any Text WCAG AA × Fail

Large Text (above 18pt) WCAG AAA × Fail

Any Text WCAG AAA × Fail

# Black Background



This preview shows how the Hex color B59A99 looks on a black background.

## Color Contrast Check

Large Text (above 18pt) WCAG AA ✓ Pass

Any Text WCAG AA ✓ Pass

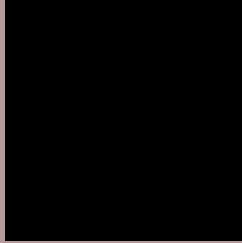
Large Text (above 18pt) WCAG AAA ✓ Pass

Any Text WCAG AAA ✓ Pass

If you want to check with other color combinations, try the [Color Contrast Checker](#).



## Hex B59A99 Background



This preview shows how black text looks on a background with the Hex color B59A99.

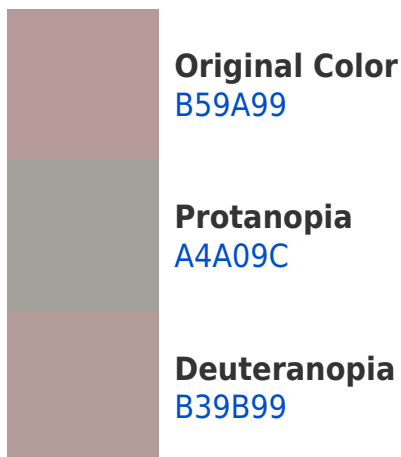


This preview shows how white text looks on a background with the Hex color B59A99.

# Color Blindness Simulation

Color vision deficiency is a very complex topic, and I could not describe the different causes any better than Wikipedia does, so if you want to learn more, you should check out their [article about color blindness](#).

## Dichromacy





**Tritanopia**  
B698A4

# Trichromacy



**Original Color**  
B59A99

**Protanomaly**  
AA9E9B

**Deuteranomaly**  
B49B99

**Tritanomaly**  
B699A0

# Monochromacy



**Original Color**  
B59A99

**Achromatopsia**  
A2A2A2

**Achromatomaly**  
A99F9F

# CSS Examples

## Text

The CSS property to change the color of the text to Hex B59A99 is called "color". The color property can be set on classes, ids or directly on the HTML element.

This example shows how text in the color #B59A99 looks like.

```
.text, #text, p{  
    color:#B59A99  
}
```

If you want to add a text shadow in that color use the text-shadow property, you can generate a text shadow directly with our [CSS Text Shadow Generator](#).

Here you see how black text with a 4 pixel #B59A99 colored shadow looks like.

```
.shadow{ text-shadow: 4px 4px 2px #B59A99
}
```

## Border

The CSS property to change the border of an element to Hex B59A99 is called "border". The border property can be set on classes, ids or directly on the HTML element.

This example shows the color as border, it can be applied via the CSS property "border" or "border-color".

```
.border, #border, table{ border:4px solid
#B59A99 }
```

If only the border color should be changed use the property `border-color`.

```
.border{ border-color:#B59A99 }
```

If you want to add a box shadow in that color use:

Here you see how a box with a 4 pixel #B59A99 colored shadow looks like.

```
.boxshadow{ -moz-box-shadow:4px 4px 4px  
4px #B59A99; -webkit-box-shadow:4px 4px  
4px 4px #B59A99; box-shadow:4px 4px 4px  
4px #B59A99 }
```

# Background

The CSS property to change the background color of an element to Hex B59A99 is called "background". The background property can be set on classes, ids or directly on the HTML element.

```
.background, #background, body{  
background:#B59A99 }
```

If only the background color should be changed can be used:

```
.background{ background-color:#B59A99 }
```

This example shows the color as background, it is applied via the CSS property "background".

To optimize and compress your CSS code, you can use our [online CSS compressor and optimizer](#) based on csstidy. If you want to create a linear or radial gradient as background or border, check our [CSS Gradient Generator](#).



Hey! You found this booklet interesting? Support Converting Colors with the new Membership Option!

The pro membership hides all ads, plus gives you double the colors in the color bucket, and more awesome pro features!

**[Learn more, Memberships starting at \\$2.50/m!](#)**

**Follow me  
on Twitter!**

@ConvertingColor