

# Converting Colors

Hex(B5A1A1)

Have a look what the booklet for  
Hex(B5A1A1) contains.

<b>Hex(B5A1A1)</b> .....	3
<i><b>Conversions</b></i> .....	4
<i><b>Details</b></i> .....	6
<i><b>Harmonies</b></i> .....	11
<i><b>Previews</b></i> .....	23
<i><b>Color Blindness Simulation</b></i> .....	26
<i><b>CSS Examples</b></i> .....	29

# **Color**

**Hex(B5A1A1)**

# Conversions

## Conversions Part 1

Format	Color
Hex	B5A1A1
RGB	181, 161, 161
RGB Percent	71%, 63%, 63%
CMY	0.2902, 0.3686, 0.3686
CMYK	0.00, 0.11, 0.11, 0.29
HSL	0°, 12%, 67%
HSV	0°, 11%, 71%
XYZ	38.2339, 37.8867, 39.0159
YIQ	166.9800, 11.9200, 4.2400

# Conversions

## Conversions Part 2

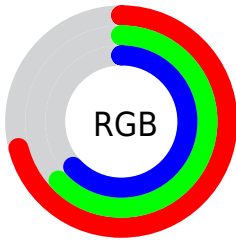
Format	Color
<a href="#">RYB</a>	<a href="#">181, 161, 161</a>
Decimal	<a href="#">11903393</a>
CIELab	<a href="#">67.94, 7.30, 2.66</a>
CIElCh	<a href="#">68, 7.770, 20.049</a>
Yxy	<a href="#">37.8867, 0.3321, 0.3291</a>
Android (android.graphics.Color)	<a href="#">4290093473</a> ( <a href="#">0xFFB5A1A1</a> )
YUV	<a href="#">166.9800, -2.9481, 12.2955</a>
Hunter-Lab	<a href="#">61.5522, 3.1613, 5.5045</a>

# Details

The Hex color **B5A1A1** is a light color, and the websafe version is hex **999999**. A complement of this color would be **A1B5B5**, and the grayscale version is **A7A7A7**.

A 20% lighter version of the original color is **EDD8D8**, and **806D6E** is the 20% darker color. If you saturate the color by 10%, you get **B58F8F**, and if you desaturate by 10%, it is **B5B3B3**.

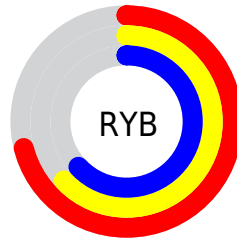
# Distribution



Red (71%)

Green (63%)

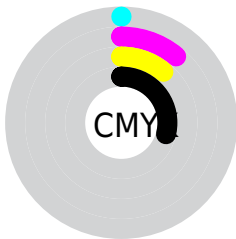
Blue (63%)



Red (71%)

Yellow (63%)

Blue (63%)

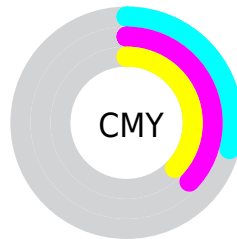


Cyan (0%)

Magenta (11%)

Yellow (11%)

Black (29%)



Cyan (29%)

Magenta (37%)

Yellow (37%)

# Brightness & Saturation Gradients

These gradients show how the Hex color B5A1A1 changes by changing the brightness by 10 percent. The first figure shows a shift by +10% for each color and the second figure -10%.

Similar to the brightness gradients but the following saturation gradients show a change of the Hex color B5A1A1 by changing the saturation by 10% instead.



 B5A1A1

 B5A1A1

FFFFFF

 9A8787

 EDD8D8

 806D6E

 FFF4F4

 675555

 4F3E3E

 382828

 221414

 000000

 B5A1A1

 B5A1A1

 B58F8F

 B5B3B3

 B57D7D

 B5C5C5

 B56B6B

 B5D7D7

 B55959

 B5E9E9

 B54646

 B5FBFB

 B53434

 B5FFFF

 B52222

 B51010

 B50000

# Harmonies

## Analogous

The Analogous color harmony consists of three colors that are next to each other on the color wheel.



B3A1A8



B5A1A1



B3A29B

# Triad

The Triadic color harmony groups three colors that are evenly spaced from another and form a triangle on the color wheel.



B5A1A1



9EA89C



9CA7B3

# Complementary

The Complementary color scheme is a pair of colors which are on the opposite of each other on the color wheel.



B5A1A1



A1B5B5

# Split Complementary

Split-complementary colors differ from the complementary color scheme. The scheme consists of three colors, the original color and two neighbors of the complement color.



96A9B0



B5A1A1



98AAA3

# Square

The Square scheme is like the rectangle color scheme, but the four colors are evenly spaced on the color wheel.



B5A1A1



A6A798



94AAAA



A4A5B3

# Rectangle

The Rectangle color scheme consists of four colors that form a rectangle on the color wheel.



B5A1A1



B0A399



94AAAA



99A8B2



# Sweetspot

The Sweet Spot groups the original color and five complimentary colors.



B5A1A1



EBE4E4



B5A1B5



757171



F5F5F5



757575



# Same Dimension

The Same Dimension uses a secret algorithm to generate beautiful new colors.



B5A1A1



EBCCCC



B5ABA1



595050



990000



1A0000



# Inverse Universe

The Inverse Universe completely reimagines the original color for something new.



A1B5B5



CCEBEB



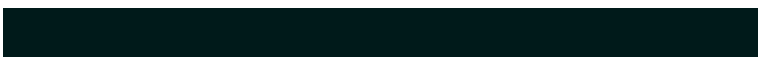
A1ABB5



505959



009999

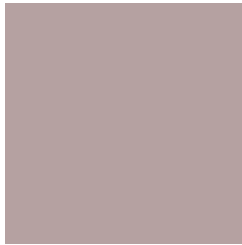


001A1A



# Previews

## White Background



This preview shows how the Hex color B5A1A1 looks on a white background.

## Color Contrast Check

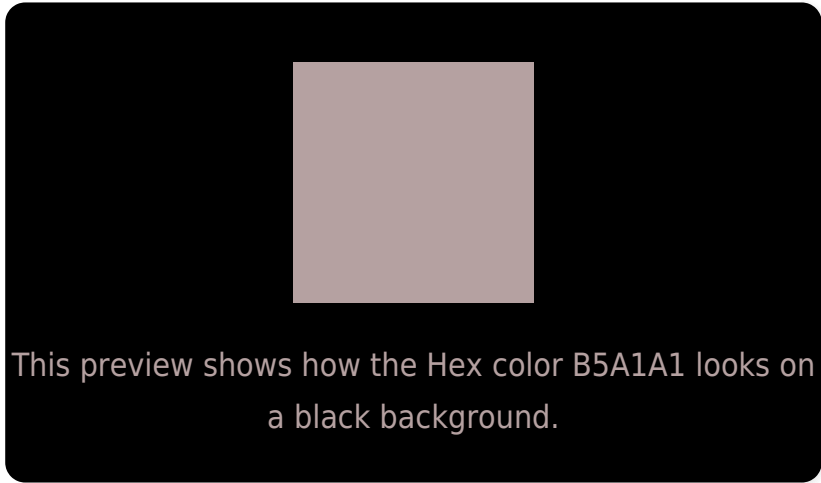
Large Text (above 18pt) WCAG AA × Fail

Any Text WCAG AA × Fail

Large Text (above 18pt) WCAG AAA × Fail

Any Text WCAG AAA × Fail

# Black Background



## Color Contrast Check

Large Text (above 18pt) WCAG AA ✓ Pass

Any Text WCAG AA ✓ Pass

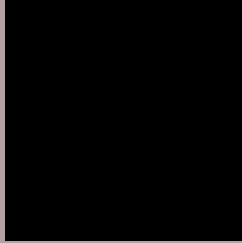
Large Text (above 18pt) WCAG AAA ✓ Pass

Any Text WCAG AAA ✓ Pass

If you want to check with other color combinations, try the [Color Contrast Checker](#).



## Hex B5A1A1 Background



This preview shows how black text looks on a background with the Hex color B5A1A1.

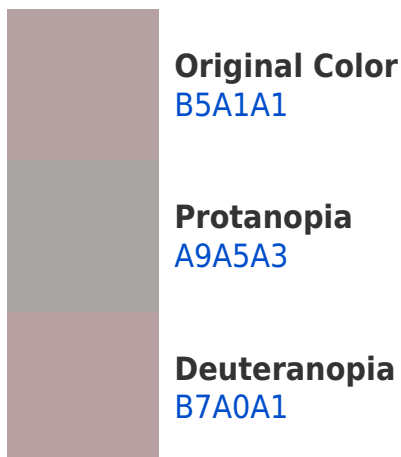


This preview shows how white text looks on a background with the Hex color B5A1A1.

# Color Blindness Simulation

Color vision deficiency is a very complex topic, and I could not describe the different causes any better than Wikipedia does, so if you want to learn more, you should check out their [article about color blindness](#).

## Dichromacy





# Trichromacy



**Original Color**  
B5A1A1

**Protanomaly**  
ADA4A2

**Deuteranomaly**  
B6A0A1

**Tritanomaly**  
B6A0A8

# Monochromacy



**Original Color**  
B5A1A1

**Achromatopsia**  
A7A7A7

**Achromatomaly**  
ACA5A5

# CSS Examples

## Text

The CSS property to change the color of the text to Hex B5A1A1 is called "color". The color property can be set on classes, ids or directly on the HTML element.

This example shows how text in the color #B5A1A1 looks like.

```
.text, #text, p{  
    color:#B5A1A1  
}
```

If you want to add a text shadow in that color use the text-shadow property, you can generate a text shadow directly with our [CSS Text Shadow Generator](#).

Here you see how black text with a 4 pixel #B5A1A1 colored shadow looks like.

```
.shadow{ text-shadow: 4px 4px 2px #B5A1A1
}
```

## Border

The CSS property to change the border of an element to Hex B5A1A1 is called "border". The border property can be set on classes, ids or directly on the HTML element.

This example shows the color as border, it can be applied via the CSS property "border" or "border-color".

```
.border, #border, table{ border:4px solid
#B5A1A1 }
```

If only the border color should be changed use the property `border-color`.

```
.border{ border-color:#B5A1A1 }
```

If you want to add a box shadow in that color use:

Here you see how a box with a 4 pixel #B5A1A1 colored shadow looks like.

```
.boxshadow{ -moz-box-shadow:4px 4px 4px  
4px #B5A1A1; -webkit-box-shadow:4px 4px  
4px 4px #B5A1A1; box-shadow:4px 4px 4px  
4px #B5A1A1 }
```

# Background

The CSS property to change the background color of an element to Hex B5A1A1 is called "background". The background property can be set on classes, ids or directly on the HTML element.

```
.background, #background, body{  
background:#B5A1A1 }
```

If only the background color should be changed can be used:

```
.background{ background-color:#B5A1A1 }
```

This example shows the color as background, it is applied via the CSS property "background".

To optimize and compress your CSS code, you can use our [online CSS compressor and optimizer](#) based on csstidy. If you want to create a linear or radial gradient as background or border, check our [CSS Gradient Generator](#).



Hey! You found this booklet interesting? Support Converting Colors with the new Membership Option!

The pro membership hides all ads, plus gives you double the colors in the color bucket, and more awesome pro features!

**[Learn more, Memberships starting at \\$2.50/m!](#)**

**Follow me  
on Twitter!**

@ConvertingColor