

Converting Colors

Hex(B5A493)

Have a look what the booklet for
Hex(B5A493) contains.

Hex(B5A493)	3
<i>Conversions</i>	4
<i>Details</i>	6
<i>Harmonies</i>	11
<i>Previews</i>	23
<i>Color Blindness Simulation</i>	26
<i>CSS Examples</i>	29

Color

Hex(B5A493)

Conversions

Conversions Part 1

Format	Color
Hex	B5A493
RGB	181, 164, 147
RGB Percent	71%, 64%, 58%
CMY	0.2902, 0.3569, 0.4235
CMYK	0.00, 0.09, 0.19, 0.29
HSL	30°, 19%, 64%
HSV	30°, 19%, 71%
XYZ	37.5980, 38.4813, 33.0498
YIQ	167.1450, 15.5890, -1.6830

Conversions

Conversions Part 2

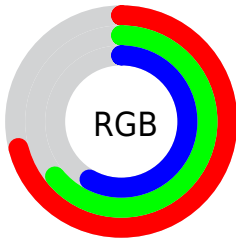
Format	Color
RYB	181, 181, 147
Decimal	11904147
CIELab	68.37, 3.36, 11.06
CIElCh	68, 11.560, 73.111
Yxy	38.4813, 0.3445, 0.3526
Android (android.graphics.Color)	4290094227 (0xFFB5A493)
YUV	167.1450, -9.9315, 12.1508
Hunter-Lab	62.0333, -0.3705, 11.8351

Details

The Hex color **B5A493** is a light color, and the websafe version is hex **999999**. A complement of this color would be **93A4B5**, and the grayscale version is **A7A7A7**.

A 20% lighter version of the original color is **EDDBC9**, and **807060** is the 20% darker color. If you saturate the color by 10%, you get **B59B81**, and if you desaturate by 10%, it is **B5ADA5**.

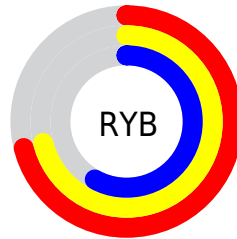
Distribution



Red (71%)

Green (64%)

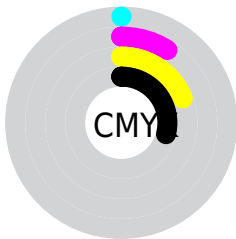
Blue (58%)



Red (71%)

Yellow (71%)

Blue (58%)

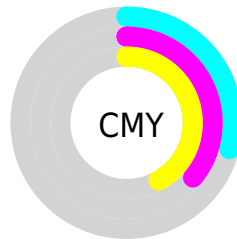


Cyan (0%)

Magenta (9%)

Yellow (19%)

Black (29%)



Cyan (29%)

Magenta (36%)

Yellow (42%)

Brightness & Saturation Gradients

These gradients show how the Hex color B5A493 changes by changing the brightness by 10 percent. The first figure shows a shift by +10% for each color and the second figure -10%.

Similar to the brightness gradients but the following saturation gradients show a change of the Hex color B5A493 by changing the saturation by 10% instead.



B5A493



B5A493

FFFFFF



9A8A79



EDDBC9



807060



FFF7E5



675849



4E4132



372B1D



221604



000000



B5A493



B5A493



B59B81



B5ADA5

 B5926F

 B5B6B7

 B5895D

 B5BFC9

 B5804B

 B5C8DB

 B57738

 B5D1ED

 B56E26

 B5DAFF

 B56514

 B5E3FF

 B55C02

 B5ECFF

 B55B00

 B5F5FF

Harmonies

Analogous

The Analogous color harmony consists of three colors that are next to each other on the color wheel.



BCA199



B5A493



AAA792

Triad

The Triadic color harmony groups three colors that are evenly spaced from another and form a triangle on the color wheel.



B5A493



8DADAB



AEA3B6

Complementary

The Complementary color scheme is a pair of colors which are on the opposite of each other on the color wheel.



B5A493



93A4B5

Split Complementary

Split-complementary colors differ from the complementary color scheme. The scheme consists of three colors, the original color and two neighbors of the complement color.



A1A6BB



B5A493



8DACB5

Square

The Square scheme is like the rectangle color scheme, but the four colors are evenly spaced on the color wheel.



B5A493



94ACA0



95A9BA



B8A0AD

Rectangle

The Rectangle color scheme consists of four colors that form a rectangle on the color wheel.



B5A493



A2AA95



95A9BA



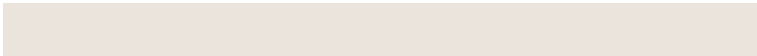
AAA4B8

Sweetspot

The Sweet Spot groups the original color and five complimentary colors.



B5A493



EBE4DD



B593A4



75716D



F5F5F5



757575

Same Dimension

The Same Dimension uses a secret algorithm to generate beautiful new colors.



B5A493



EBD0B5



B5B593



595550



994D00



1A0D00

Inverse Universe

The Inverse Universe completely reimagines the original color for something new.



93A4B5



B5D0EB



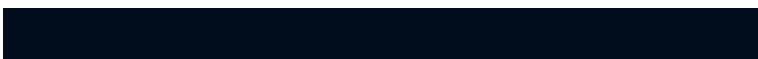
9393B5



505559



004D99



000D1A

Previews

White Background



This preview shows how the Hex color B5A493 looks on a white background.

Color Contrast Check

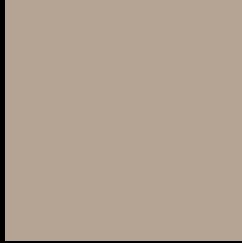
Large Text (above 18pt) WCAG AA × Fail

Any Text WCAG AA × Fail

Large Text (above 18pt) WCAG AAA × Fail

Any Text WCAG AAA × Fail

Black Background



This preview shows how the Hex color B5A493 looks on a black background.

Color Contrast Check

Large Text (above 18pt) WCAG AA ✓ Pass

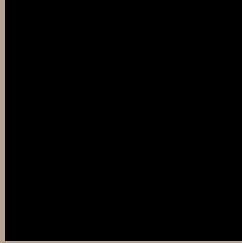
Any Text WCAG AA ✓ Pass

Large Text (above 18pt) WCAG AAA ✓ Pass

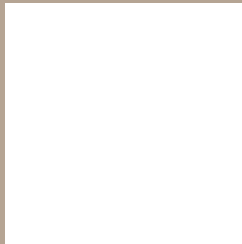
Any Text WCAG AAA ✓ Pass

If you want to check with other color combinations, try the [Color Contrast Checker](#).

Hex B5A493 Background



This preview shows how black text looks on a background with the Hex color B5A493.



This preview shows how white text looks on a background with the Hex color B5A493.

Color Blindness Simulation

Color vision deficiency is a very complex topic, and I could not describe the different causes any better than Wikipedia does, so if you want to learn more, you should check out their [article about color blindness](#).

Dichromacy



Original Color
B5A493

Protanopia
AEA694

Deuteranopia
BEA194



Tritanopia
B8A0AD

Trichromacy



Original Color
B5A493

Protanomaly
B1A594

Deuteranomaly
BBA294

Tritanomaly
B7A1A4

Monochromacy



Original Color
B5A493

Achromatopsia
A7A7A7

Achromatomaly
ACA6A0

CSS Examples

Text

The CSS property to change the color of the text to Hex B5A493 is called "color". The color property can be set on classes, ids or directly on the HTML element.

This example shows how text in the color #B5A493 looks like.

```
.text, #text, p{  
    color:#B5A493  
}
```

If you want to add a text shadow in that color use the text-shadow property, you can generate a text shadow directly with our [CSS Text Shadow Generator](#).

Here you see how black text with a 4 pixel #B5A493 colored shadow looks like.

```
.shadow{ text-shadow: 4px 4px 2px #B5A493  
}
```

Border

The CSS property to change the border of an element to Hex B5A493 is called "border". The border property can be set on classes, ids or directly on the HTML element.

This example shows the color as border, it can be applied via the CSS property "border" or "border-color".

```
.border, #border, table{ border:4px solid  
#B5A493 }
```

If only the border color should be changed use the property `border-color`.

```
.border{ border-color:#B5A493 }
```

If you want to add a box shadow in that color use:

Here you see how a box with a 4 pixel #B5A493 colored shadow looks like.

```
.boxshadow{ -moz-box-shadow:4px 4px 4px  
4px #B5A493; -webkit-box-shadow:4px 4px  
4px 4px #B5A493; box-shadow:4px 4px 4px  
4px #B5A493 }
```

Background

The CSS property to change the background color of an element to Hex B5A493 is called "background". The background property can be set on classes, ids or directly on the HTML element.

```
.background, #background, body{  
background:#B5A493 }
```

If only the background color should be changed can be used:

```
.background{ background-color:#B5A493 }
```

This example shows the color as background, it is applied via the CSS property "background".

To optimize and compress your CSS code, you can use our [online CSS compressor and optimizer](#) based on csstidy. If you want to create a linear or radial gradient as background or border, check our [CSS Gradient Generator](#).

Hey! You found this booklet interesting? Support Converting Colors with the new Membership Option!

The pro membership hides all ads, plus gives you double the colors in the color bucket, and more awesome pro features!

[Learn more, Memberships starting at \\$2.50/m!](#)

**Follow me
on Twitter!**

@ConvertingColor