

# Converting Colors

Hex(B67473)

Have a look what the booklet for  
Hex(B67473) contains.

<b>Hex(B67473)</b> .....	3
<i><b>Conversions</b></i> .....	4
<i><b>Details</b></i> .....	6
<i><b>Harmonies</b></i> .....	11
<i><b>Previews</b></i> .....	23
<i><b>Color Blindness Simulation</b></i> .....	26
<i><b>CSS Examples</b></i> .....	29

**Color**

**Hex(B67473)**

# Conversions

## Conversions Part 1

<b>Format</b>	<b>Color</b>
Hex	<a href="#">B67473</a>
RGB	<a href="#">182, 116, 115</a>
RGB Percent	<a href="#">71%, 45%, 45%</a>
CMY	<a href="#">0.2863, 0.5451, 0.5490</a>
CMYK	<a href="#">0.00, 0.36, 0.37, 0.29</a>
HSL	<a href="#">1°, 31%, 58%</a>
HSV	<a href="#">1°, 37%, 71%</a>
XYZ	<a href="#">28.6313, 23.6737, 19.2801</a>
YIQ	<a href="#">135.6200, 39.6570, 13.6810</a>

# Conversions

## Conversions Part 2

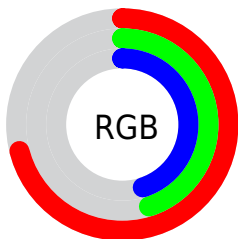
<b>Format</b>	<b>Color</b>
<b>R<sub>YB</sub></b>	182, 116, 115
Decimal	11957363
CIE <sub>Lab</sub>	55.76, 25.87, 11.41
CIE <sub>LCh</sub>	56, 28.273, 23.812
Yxy	23.6737, 0.4000, 0.3307
Android (android.graphics.Color)	4290147443 (0xFFB67473)
YUV	135.6200, -10.1657, 40.6753
Hunter-Lab	48.6556, 19.8907, 10.5649

# Details

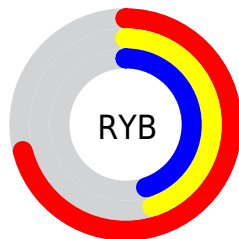
The Hex color **B67473** is a dark color, and the websafe version is hex **996666**. A complement of this color would be **73B5B6**, and the grayscale version is **888888**.

A 20% lighter version of the original color is **F0A9A7**, and **7F4343** is the 20% darker color. If you saturate the color by 10%, you get **B66261**, and if you desaturate by 10%, it is **B68685**.

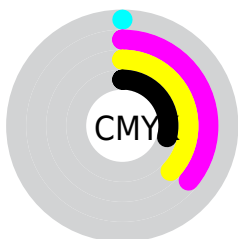
# Distribution



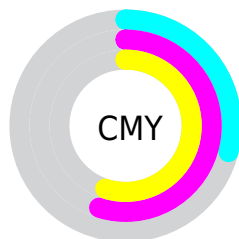
- Red (71%)
- Green (45%)
- Blue (45%)



- Red (71%)
- Yellow (45%)
- Blue (45%)



- Cyan (0%)
- Magenta (36%)
- Yellow (37%)
- Black (29%)



- Cyan (29%)
- Magenta (55%)
- Yellow (55%)

# Brightness & Saturation Gradients

These gradients show how the Hex color B67473 changes by changing the brightness by 10 percent. The first figure shows a shift by +10% for each color and the second figure -10%.

Similar to the brightness gradients but the following saturation gradients show a change of the Hex color B67473 by changing the saturation by 10% instead.



 B67473

 B67473

FFFFFF

 9A5B5A

 F0A9A7

 7F4343

 FFC4C2

 642B2D

 FFE0DE

 4A1418

 FFFDFA

 320000

 120000

 000000


 B67473

 B67473

 B66261

 B68685

 B6504F

 B69897

 B63E3C

 B6AAAA

 B62C2A

 B6BCBC

 B61A18

 B6CECE

 B60806

 B6E0E0

 B60300

 B6F1F2

 B6FFFF

# Harmonies

## Analogous

The Analogous color harmony consists of three colors that are next to each other on the color wheel.



B2738C



B67473



AD7A5F

# Triad

The Triadic color harmony groups three colors that are evenly spaced from another and form a triangle on the color wheel.



B67473



669068



5C8AB6

# Complementary

The Complementary color scheme is a pair of colors which are on the opposite of each other on the color wheel.



B67473



73B5B6

# Split Complementary

Split-complementary colors differ from the complementary color scheme. The scheme consists of three colors, the original color and two neighbors of the complement color.



3890AC



B67473



48937F

# Square

The Square scheme is like the rectangle color scheme, but the four colors are evenly spaced on the color wheel.



B67473



828A58



309399



8281B2

# Rectangle

The Rectangle color scheme consists of four colors that form a rectangle on the color wheel.



B67473



A28057



309399



4F8CB4



# Sweetspot

The Sweet Spot groups the original color and five complimentary colors.



B67473



EDD3D3



B673B6



786968



F7F7F7



787878



# Same Dimension

The Same Dimension uses a secret algorithm to generate beautiful new colors.



B67473



ED8685



B69573



5C5353



9C0200



1C0000



# Inverse Universe

The Inverse Universe completely reimagines the original color for something new.



73B5B6



85ECED



7395B6



535C5C



00999C

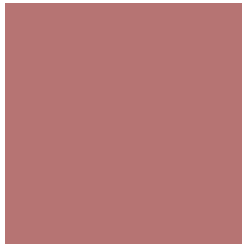


001C1C



# Previews

## White Background



This preview shows how the Hex color B67473 looks on a white background.

## Color Contrast Check

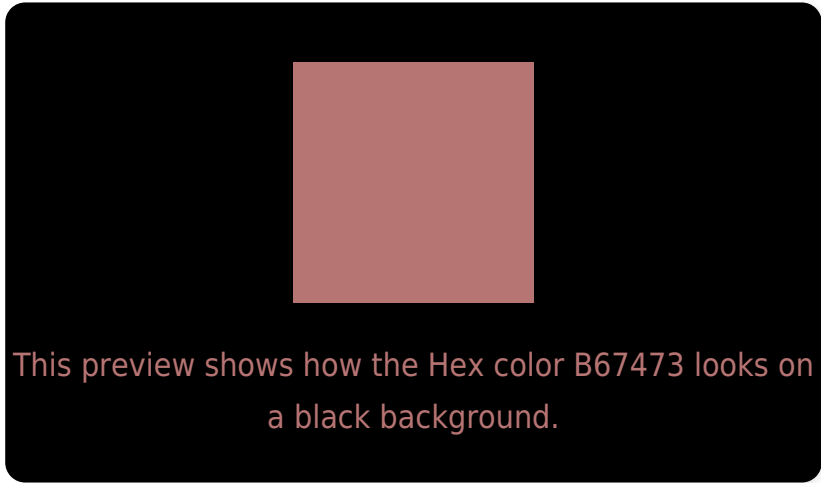
Large Text (above 18pt) WCAG AA ✓ Pass

Any Text WCAG AA × Fail

Large Text (above 18pt) WCAG AAA × Fail

Any Text WCAG AAA × Fail

# Black Background



## Color Contrast Check

Large Text (above 18pt) WCAG AA ✓ Pass

Any Text WCAG AA ✓ Pass

Large Text (above 18pt) WCAG AAA ✓ Pass

Any Text WCAG AAA × Fail

If you want to check with other color combinations, try the [Color Contrast Checker](#).



## Hex B67473 Background



This preview shows how black text looks on a background with the Hex color B67473.



This preview shows how white text looks on a background with the Hex color B67473.

# Color Blindness Simulation

Color vision deficiency is a very complex topic, and I could not describe the different causes any better than Wikipedia does, so if you want to learn more, you should check out their [article about color blindness](#).

## Dichromacy



**Original Color**  
B67473

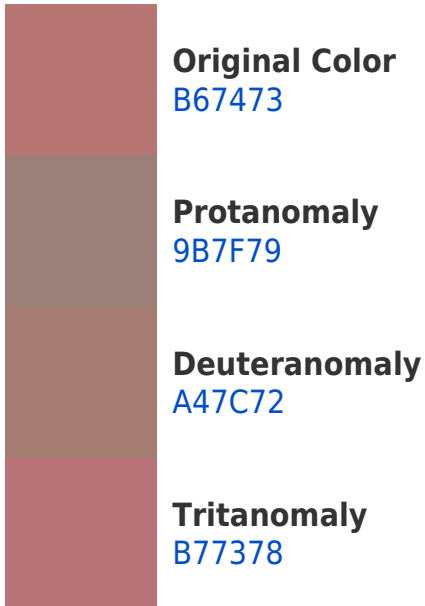
**Protanopia**  
8B867C

**Deuteranopia**  
9A8171

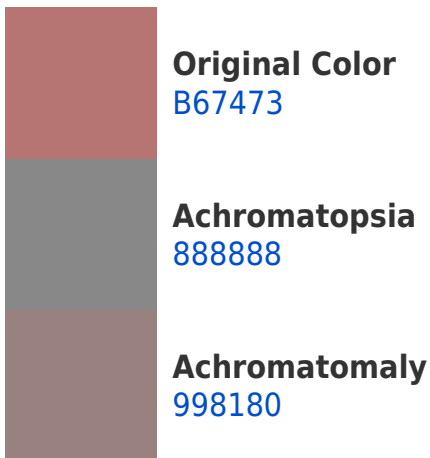


**Tritanopia**  
B7737B

# Trichromacy



# Monochromacy



# CSS Examples

## Text

The CSS property to change the color of the text to Hex B67473 is called "color". The color property can be set on classes, ids or directly on the HTML element.

This example shows how text in the color #B67473 looks like.

```
.text, #text, p{  
  color:#B67473  
}
```

If you want to add a text shadow in that color use the text-shadow property, you can generate a text shadow directly with our [CSS Text Shadow Generator](#).

Here you see how black text with a 4 pixel #B67473 colored shadow looks like.

```
.shadow{ text-shadow: 4px 4px 2px #B67473
}
```

## Border

The CSS property to change the border of an element to Hex B67473 is called "border". The border property can be set on classes, ids or directly on the HTML element.

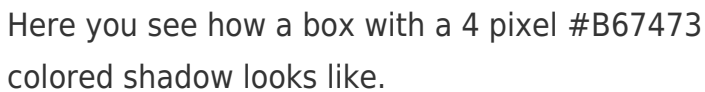
This example shows the color as border, it can be applied via the CSS property "border" or "border-color".

```
.border, #border, table{ border:4px solid
#B67473 }
```

If only the border color should be changed use the property `border-color`.

```
.border{ border-color:#B67473 }
```

If you want to add a box shadow in that color use:



Here you see how a box with a 4 pixel #B67473 colored shadow looks like.

```
.boxshadow{ -moz-box-shadow:4px 4px 4px  
4px #B67473; -webkit-box-shadow:4px 4px  
4px 4px #B67473; box-shadow:4px 4px 4px  
4px #B67473 }
```

# Background

The CSS property to change the background color of an element to Hex B67473 is called "background". The background property can be set on classes, ids or directly on the HTML element.

```
.background, #background, body{  
background:#B67473 }
```

If only the background color should be changed can be used:

```
.background{ background-color:#B67473 }
```

This example shows the color as background, it is applied via the CSS property "background".

To optimize and compress your CSS code, you can use our [online CSS compressor and optimizer](#) based on csstidy. If you want to create a linear or radial gradient as background or border, check our [CSS Gradient Generator](#).



Hey! You found this booklet interesting? Support Converting Colors with the new Membership Option!

The pro membership hides all ads, plus gives you double the colors in the color bucket, and more awesome pro features!

**[Learn more, Memberships starting at \\$2.50/m!](#)**

**Follow me  
on Twitter!**

@ConvertingColor