

# Converting Colors

Hex(B68345)

Have a look what the booklet for  
Hex(B68345) contains.

<b>Hex(B68345)</b> .....	3
<i><b>Conversions</b></i> .....	4
<i><b>Details</b></i> .....	6
<i><b>Harmonies</b></i> .....	11
<i><b>Previews</b></i> .....	23
<i><b>Color Blindness Simulation</b></i> .....	26
<i><b>CSS Examples</b></i> .....	29

**Color**

**Hex(B68345)**

# Conversions

## Conversions Part 1

Format	Color
Hex	B68345
RGB	182, 131, 69
RGB Percent	71%, 51%, 27%
CMY	0.2863, 0.4863, 0.7294
CMYK	0.00, 0.28, 0.62, 0.29
HSL	33°, 45%, 49%
HSV	33°, 62%, 71%
XYZ	28.4819, 26.6074, 9.2648
YIQ	139.1810, 50.2980, -8.4700

# Conversions

## Conversions Part 2

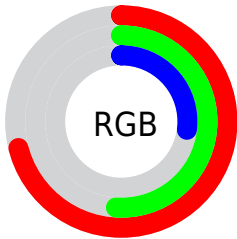
<b>Format</b>	<b>Color</b>
<b>R<sub>YB</sub></b>	162, 182, 69
Decimal	11961157
CIE Lab	58.61, 13.00, 40.67
CIE LCh	59, 42.696, 72.274
Yxy	26.6074, 0.4426, 0.4135
Android (android.graphics.Color)	4290151237 (0xFFB68345)
YUV	139.1810, -34.5992, 37.5523
Hunter-Lab	51.5823, 8.2922, 25.4584

# Details

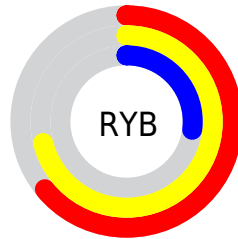
The Hex color **B68345** is a dark color, and the websafe version is hex **CC9966**. A complement of this color would be **4578B6**, and the grayscale version is **8B8B8B**.

A 20% lighter version of the original color is **F1B877**, and **7D5214** is the 20% darker color. If you saturate the color by 10%, you get **B67B33**, and if you desaturate by 10%, it is **B68B57**.

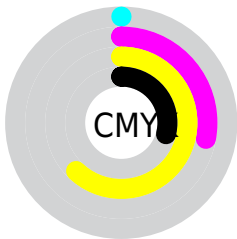
# Distribution



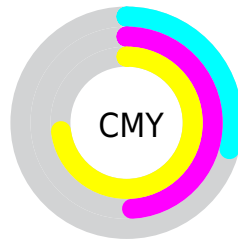
- Red (71%)
- Green (51%)
- Blue (27%)



- Red (64%)
- Yellow (71%)
- Blue (27%)



- Cyan (0%)
- Magenta (28%)
- Yellow (62%)
- Black (29%)



- Cyan (29%)
- Magenta (49%)
- Yellow (73%)

# Brightness & Saturation Gradients

These gradients show how the Hex color B68345 changes by changing the brightness by 10 percent. The first figure shows a shift by +10% for each color and the second figure -10%.

Similar to the brightness gradients but the following saturation gradients show a change of the Hex color B68345 by changing the saturation by 10% instead.



 B68345

 B68345

FFFFFF

 996A2D

 F1B877

 7D5214

 FFD491

 623B00

 FFF0AC

 482500

 FFFFC8

 2E1100

 FFFFE4

 110000

 000000

 B68345

 B68345

 B67B33

 B68B57

 B67321

 B69369

 B66A0E

 B69C7C

 B66400

 B6A48E

 B6ACA0

 B6B4B2

 B6BCC4

 B6C5D7

 B6CDE9

# Harmonies

## Analogous

The Analogous color harmony consists of three colors that are next to each other on the color wheel.



CD765C



B68345



959041

# Triad

The Triadic color harmony groups three colors that are evenly spaced from another and form a triangle on the color wheel.



B68345



00A09C



A47DC5

# Complementary

The Complementary color scheme is a pair of colors which are on the opposite of each other on the color wheel.



B68345



4578B6

# Split Complementary

Split-complementary colors differ from the complementary color scheme. The scheme consists of three colors, the original color and two neighbors of the complement color.



6B8CD6



B68345



009EBE

# Square

The Square scheme is like the rectangle color scheme, but the four colors are evenly spaced on the color wheel.



B68345



329F75



0097D4



C771A5

# Rectangle

The Rectangle color scheme consists of four colors that form a rectangle on the color wheel.



B68345



7A964B



0097D4



9482CC



# Sweetspot

The Sweet Spot groups the original color and five complimentary colors.



B68345



EDD9C0



B6457A



786B5C



F7F7F7



787878



# Same Dimension

The Same Dimension uses a secret algorithm to generate beautiful new colors.



B68345



ED9D3B



B2B645



5C5853



9C5500



1C0F00



# Inverse Universe

The Inverse Universe completely reimagines the original color for something new.



4578B6



3B8CED



4945B6



53575C



00469C

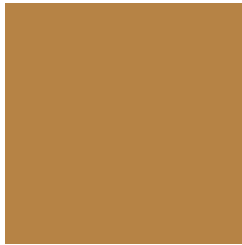


000D1C



# Previews

## White Background



This preview shows how the Hex color B68345 looks on a white background.

## Color Contrast Check

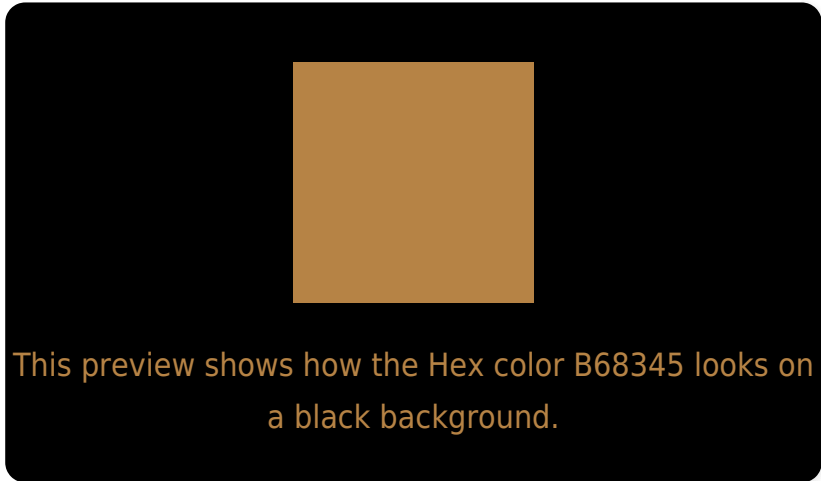
Large Text (above 18pt) WCAG AA ✓ Pass

Any Text WCAG AA × Fail

Large Text (above 18pt) WCAG AAA × Fail

Any Text WCAG AAA × Fail

# Black Background



## Color Contrast Check

Large Text (above 18pt) WCAG AA ✓ Pass

Any Text WCAG AA ✓ Pass

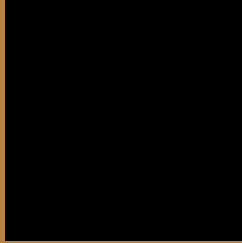
Large Text (above 18pt) WCAG AAA ✓ Pass

Any Text WCAG AAA × Fail

If you want to check with other color combinations, try the [Color Contrast Checker](#).



## Hex B68345 Background



This preview shows how black text looks on a background with the Hex color B68345.



This preview shows how white text looks on a background with the Hex color B68345.

# Color Blindness Simulation

Color vision deficiency is a very complex topic, and I could not describe the different causes any better than Wikipedia does, so if you want to learn more, you should check out their [article about color blindness](#).

## Dichromacy



**Original Color**  
B68345

**Protanopia**  
9C8D48

**Deuteranopia**  
AE8744



**Tritanopia**  
BB7C85

# Trichromacy



**Original Color**  
B68345

**Protanomaly**  
A58947

**Deuteranomaly**  
B18644

**Tritanomaly**  
B97F6E

# Monochromacy



**Original Color**  
B68345

**Achromatopsia**  
8B8B8B

**Achromatomaly**  
9B8872

# CSS Examples

## Text

The CSS property to change the color of the text to Hex B68345 is called "color". The color property can be set on classes, ids or directly on the HTML element.

This example shows how text in the color #B68345 looks like.

```
.text, #text, p{  
    color:#B68345  
}
```

If you want to add a text shadow in that color use the text-shadow property, you can generate a text shadow directly with our [CSS Text Shadow Generator](#).

Here you see how black text with a 4 pixel #B68345 colored shadow looks like.

```
.shadow{ text-shadow: 4px 4px 2px #B68345
}
```

## Border

The CSS property to change the border of an element to Hex B68345 is called "border". The border property can be set on classes, ids or directly on the HTML element.

This example shows the color as border, it can be applied via the CSS property "border" or "border-color".

```
.border, #border, table{ border:4px solid
#B68345 }
```

If only the border color should be changed use the property `border-color`.

```
.border{ border-color:#B68345 }
```

If you want to add a box shadow in that color use:

Here you see how a box with a 4 pixel #B68345 colored shadow looks like.

```
.boxshadow{ -moz-box-shadow:4px 4px 4px  
4px #B68345; -webkit-box-shadow:4px 4px  
4px 4px #B68345; box-shadow:4px 4px 4px  
4px #B68345 }
```

# Background

The CSS property to change the background color of an element to Hex B68345 is called "background". The background property can be set on classes, ids or directly on the HTML element.

```
.background, #background, body{  
background:#B68345 }
```

If only the background color should be changed can be used:

```
.background{ background-color:#B68345 }
```

This example shows the color as background, it is applied via the CSS property "background".

To optimize and compress your CSS code, you can use our [online CSS compressor and optimizer](#) based on csstidy. If you want to create a linear or radial gradient as background or border, check our [CSS Gradient Generator](#).



Hey! You found this booklet interesting? Support Converting Colors with the new Membership Option!

The pro membership hides all ads, plus gives you double the colors in the color bucket, and more awesome pro features!

**[Learn more, Memberships starting at \\$2.50/m!](#)**

**Follow me  
on Twitter!**

@ConvertingColor