

Converting Colors

Hex(B6885A)

Have a look what the booklet for
Hex(B6885A) contains.

Hex(B6885A)	3
<i>Conversions</i>	4
<i>Details</i>	6
<i>Harmonies</i>	11
<i>Previews</i>	23
<i>Color Blindness Simulation</i>	26
<i>CSS Examples</i>	29

Color

Hex(B6885A)

Conversions

Conversions Part 1

Format	Color
Hex	B6885A
RGB	182, 136, 90
RGB Percent	71%, 53%, 35%
CMY	0.2863, 0.4667, 0.6471
CMYK	0.00, 0.25, 0.51, 0.29
HSL	30°, 39%, 53%
HSV	30°, 51%, 71%
XYZ	29.9410, 28.2916, 13.5556
YIQ	144.5100, 42.1820, -4.5540

Conversions

Conversions Part 2

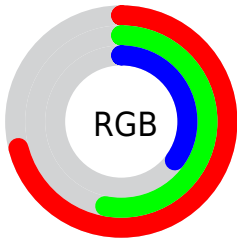
Format	Color
R_{YB}	182, 182, 90
Decimal	11962458
CIE _{Lab}	60.15, 11.97, 31.43
CIE _{LCh}	60, 33.632, 69.149
Yxy	28.2916, 0.4171, 0.3941
Android (android.graphics.Color)	4290152538 (0xFFB6885A)
YUV	144.5100, -26.8734, 32.8787
Hunter-Lab	53.1898, 7.3970, 22.1226

Details

The Hex color **B6885A** is a dark color, and the websafe version is hex **CC9966**. A complement of this color would be **5A88B6**, and the grayscale version is **919191**.

A 20% lighter version of the original color is **F0BD8D**, and **7F562B** is the 20% darker color. If you saturate the color by 10%, you get **B67F48**, and if you desaturate by 10%, it is **B6916C**.

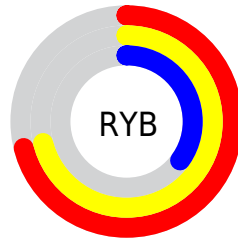
Distribution



Red (71%)

Green (53%)

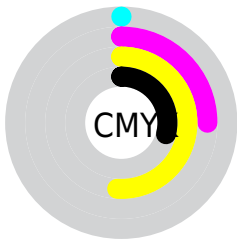
Blue (35%)



Red (71%)

Yellow (71%)

Blue (35%)

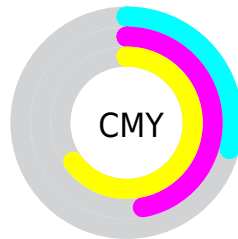


Cyan (0%)

Magenta (25%)

Yellow (51%)

Black (29%)



Cyan (29%)

Magenta (47%)

Yellow (65%)

Brightness & Saturation Gradients

These gradients show how the Hex color B6885A changes by changing the brightness by 10 percent. The first figure shows a shift by +10% for each color and the second figure -10%.

Similar to the brightness gradients but the following saturation gradients show a change of the Hex color B6885A by changing the saturation by 10% instead.



B6885A



B6885A

FFFFFF



9A6F42



F0BD8D



7F562B



FFD9A7



643F14



FFF6C3



4A2900



FFFFDF



311400



FFFFFC



190000



000000



B6885A



B6885A



B67F48



B6916C

 B67636

 B69A7E

 B66D23

 B6A391

 B66411

 B6ACA3

 B65B00

 B6B6B5

 B6BFC7

 B6C8D9

 B6D1EC

 B6DAFE

Harmonies

Analogous

The Analogous color harmony consists of three colors that are next to each other on the color wheel.



C77F6D



B6885A



9C9256

Triad

The Triadic color harmony groups three colors that are evenly spaced from another and form a triangle on the color wheel.



B6885A



2CA199



A086BF

Complementary

The Complementary color scheme is a pair of colors which are on the opposite of each other on the color wheel.



B6885A



5A88B6

Split Complementary

Split-complementary colors differ from the complementary color scheme. The scheme consists of three colors, the original color and two neighbors of the complement color.



7591CB



B6885A



0D9FB5

Square

The Square scheme is like the rectangle color scheme, but the four colors are evenly spaced on the color wheel.



B6885A



569F7B



419AC8



BE7DA7

Rectangle

The Rectangle color scheme consists of four colors that form a rectangle on the color wheel.



B6885A



87985C



419AC8



938AC5

Sweetspot

The Sweet Spot groups the original color and five complimentary colors.



B6885A



EDDBCA



B65A88



786D62



F7F7F7



787878

Same Dimension

The Same Dimension uses a secret algorithm to generate beautiful new colors.



B6885A



EDA55C



B6B65A



5C5753



9C4E00



1C0E00

Inverse Universe

The Inverse Universe completely reimagines the original color for something new.



5A88B6



5CA5ED



5A5AB6



53575C



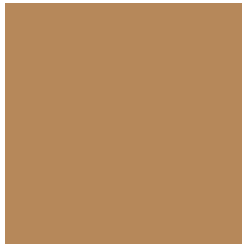
004E9C



000E1C

Previews

White Background



This preview shows how the Hex color B6885A looks on a white background.

Color Contrast Check

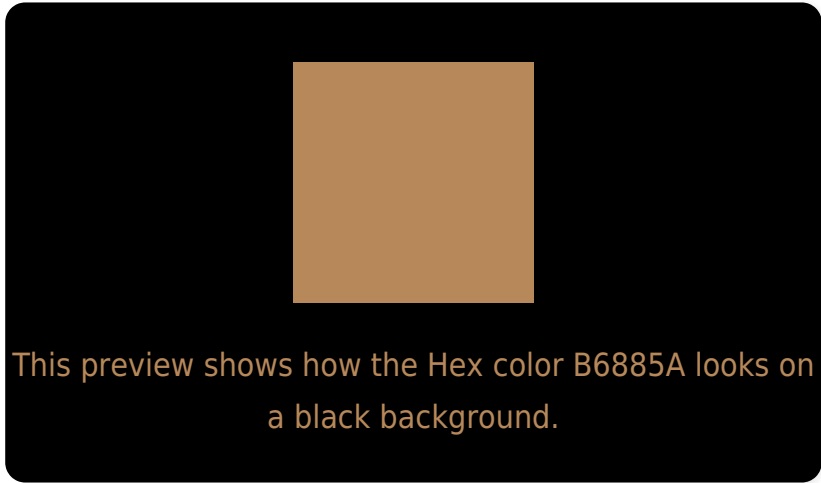
Large Text (above 18pt) WCAG AA ✓ Pass

Any Text WCAG AA ✗ Fail

Large Text (above 18pt) WCAG AAA ✗ Fail

Any Text WCAG AAA ✗ Fail

Black Background



Color Contrast Check

Large Text (above 18pt) WCAG AA ✓ Pass

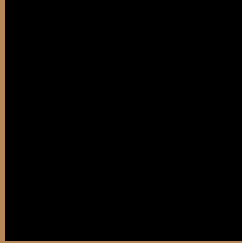
Any Text WCAG AA ✓ Pass

Large Text (above 18pt) WCAG AAA ✓ Pass

Any Text WCAG AAA × Fail

If you want to check with other color combinations, try the [Color Contrast Checker](#).

Hex B6885A Background



This preview shows how black text looks on a background with the Hex color B6885A.



This preview shows how white text looks on a background with the Hex color B6885A.

Color Blindness Simulation

Color vision deficiency is a very complex topic, and I could not describe the different causes any better than Wikipedia does, so if you want to learn more, you should check out their [article about color blindness](#).


Dichromacy



Original Color
B6885A

Protanopia
9E915E

Deuteranopia
B08B59

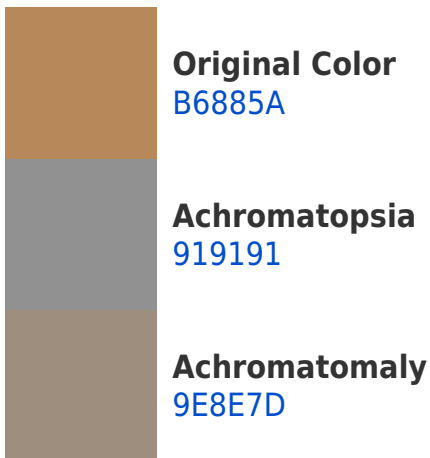


Tritanopia
BA828C

Trichromacy



Monochromacy



CSS Examples

Text

The CSS property to change the color of the text to Hex B6885A is called "color". The color property can be set on classes, ids or directly on the HTML element.

This example shows how text in the color #B6885A looks like.

```
.text, #text, p{  
    color:#B6885A  
}
```

If you want to add a text shadow in that color use the text-shadow property, you can generate a text shadow directly with our [CSS Text Shadow Generator](#).

Here you see how black text with a 4 pixel #B6885A colored shadow looks like.

```
.shadow{ text-shadow: 4px 4px 2px #B6885A
}
```

Border

The CSS property to change the border of an element to Hex B6885A is called "border". The border property can be set on classes, ids or directly on the HTML element.

This example shows the color as border, it can be applied via the CSS property "border" or "border-color".

```
.border, #border, table{ border:4px solid
#B6885A }
```

If only the border color should be changed use the property `border-color`.

```
.border{ border-color:#B6885A }
```

If you want to add a box shadow in that color use:

Here you see how a box with a 4 pixel #B6885A colored shadow looks like.

```
.boxshadow{ -moz-box-shadow:4px 4px 4px  
4px #B6885A; -webkit-box-shadow:4px 4px  
4px 4px #B6885A; box-shadow:4px 4px 4px  
4px #B6885A }
```

Background

The CSS property to change the background color of an element to Hex B6885A is called "background". The background property can be set on classes, ids or directly on the HTML element.

```
.background, #background, body{  
background:#B6885A }
```

If only the background color should be changed can be used:

```
.background{ background-color:#B6885A }
```

This example shows the color as background, it is applied via the CSS property "background".

To optimize and compress your CSS code, you can use our [online CSS compressor and optimizer](#) based on csstidy. If you want to create a linear or radial gradient as background or border, check our [CSS Gradient Generator](#).

Hey! You found this booklet interesting? Support Converting Colors with the new Membership Option!

The pro membership hides all ads, plus gives you double the colors in the color bucket, and more awesome pro features!

[Learn more, Memberships starting at \\$2.50/m!](#)

**Follow me
on Twitter!**

@ConvertingColor