

Converting Colors

Hex(B6895B)

Have a look what the booklet for
Hex(B6895B) contains.

Hex(B6895B)	3
<i>Conversions</i>	4
<i>Details</i>	6
<i>Harmonies</i>	11
<i>Previews</i>	23
<i>Color Blindness Simulation</i>	26
<i>CSS Examples</i>	29

Color

Hex(B6895B)

Conversions

Conversions Part 1

Format	Color
Hex	B6895B
RGB	182, 137, 91
RGB Percent	71%, 54%, 36%
CMY	0.2863, 0.4627, 0.6431
CMYK	0.00, 0.25, 0.50, 0.29
HSL	30°, 38%, 54%
HSV	30°, 50%, 71%
XYZ	30.1254, 28.5917, 13.8285
YIQ	145.2110, 41.5860, -4.7660

Conversions

Conversions Part 2

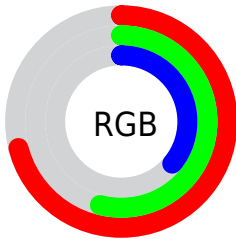
Format	Color
R_{YB}	180, 182, 91
Decimal	11962715
CIE Lab	60.42, 11.51, 31.23
CIE LCh	60, 33.281, 69.764
Yxy	28.5917, 0.4153, 0.3941
Android (android.graphics.Color)	4290152795 (0xFFB6895B)
YUV	145.2110, -26.7260, 32.2640
Hunter-Lab	53.4712, 6.9912, 22.0965

Details

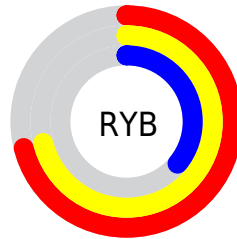
The Hex color **B6895B** is a dark color, and the websafe version is hex **CC9966**. A complement of this color would be **5B88B6**, and the grayscale version is **919191**.

A 20% lighter version of the original color is **F0BE8E**, and **7F572C** is the 20% darker color. If you saturate the color by 10%, you get **B68049**, and if you desaturate by 10%, it is **B6926D**.

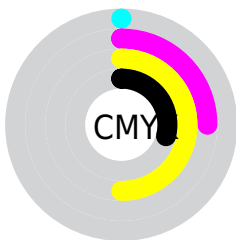
Distribution



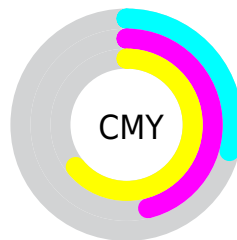
- Red (71%)
- Green (54%)
- Blue (36%)



- Red (71%)
- Yellow (71%)
- Blue (36%)



- Cyan (0%)
- Magenta (25%)
- Yellow (50%)
- Black (29%)



- Cyan (29%)
- Magenta (46%)
- Yellow (64%)

Brightness & Saturation Gradients

These gradients show how the Hex color B6895B changes by changing the brightness by 10 percent. The first figure shows a shift by +10% for each color and the second figure -10%.

Similar to the brightness gradients but the following saturation gradients show a change of the Hex color B6895B by changing the saturation by 10% instead.



B6895B



B6895B

FFFFFF



9A7043



F0BE8E



7F572C



FFDAA9



644015



FFF7C4



4A2A00



FFFFE0



311500

FFFFFFD



190000



000000



B6895B



B6895B



B68049



B6926D

 B67737

 B69B7F

 B66E24

 B6A492

 B66512

 B6ADA4

 B65C00

 B6B6B6

 B6BFC8

 B6C8DA

 B6D1ED

 B6DAFF

Harmonies

Analogous

The Analogous color harmony consists of three colors that are next to each other on the color wheel.



C7806E



B6895B



9C9357

Triad

The Triadic color harmony groups three colors that are evenly spaced from another and form a triangle on the color wheel.



B6895B



2EA19B



A187BF

Complementary

The Complementary color scheme is a pair of colors which are on the opposite of each other on the color wheel.



B6895B



5B88B6

Split Complementary

Split-complementary colors differ from the complementary color scheme. The scheme consists of three colors, the original color and two neighbors of the complement color.



7791CB



B6895B



16A0B6

Square

The Square scheme is like the rectangle color scheme, but the four colors are evenly spaced on the color wheel.



B6895B



57A07C



449AC8



BE7EA7

Rectangle

The Rectangle color scheme consists of four colors that form a rectangle on the color wheel.



B6895B



87995E



449AC8



958AC5

Sweetspot

The Sweet Spot groups the original color and five complimentary colors.



B6895B



EDDCCA



B65B89



786D62



F7F7F7



787878

Same Dimension

The Same Dimension uses a secret algorithm to generate beautiful new colors.



B6895B



EDA75F



B6B65B



5C5753



9C4F00



1C0E00

Inverse Universe

The Inverse Universe completely reimagines the original color for something new.



5B88B6



5FA5ED



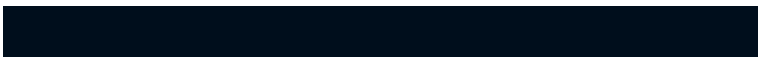
5B5BB6



53575C



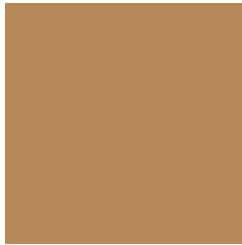
004D9C



000E1C

Previews

White Background



This preview shows how the Hex color B6895B looks on a white background.

Color Contrast Check

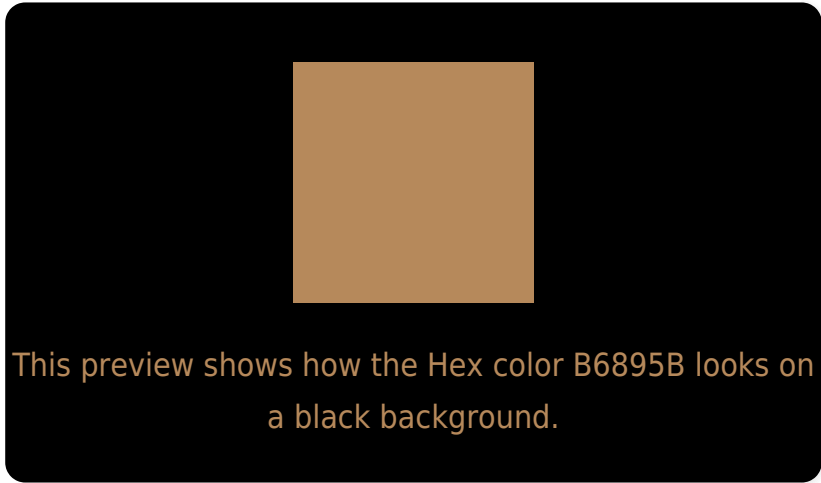
Large Text (above 18pt) WCAG AA ✓ Pass

Any Text WCAG AA ✗ Fail

Large Text (above 18pt) WCAG AAA ✗ Fail

Any Text WCAG AAA ✗ Fail

Black Background



Color Contrast Check

Large Text (above 18pt) WCAG AA ✓ Pass

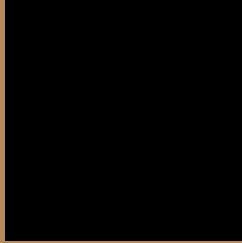
Any Text WCAG AA ✓ Pass

Large Text (above 18pt) WCAG AAA ✓ Pass

Any Text WCAG AAA × Fail

If you want to check with other color combinations, try the [Color Contrast Checker](#).

Hex B6895B Background



This preview shows how black text looks on a background with the Hex color B6895B.




This preview shows how white text looks on a background with the Hex color B6895B.

Color Blindness Simulation

Color vision deficiency is a very complex topic, and I could not describe the different causes any better than Wikipedia does, so if you want to learn more, you should check out their [article about color blindness](#).

Dichromacy



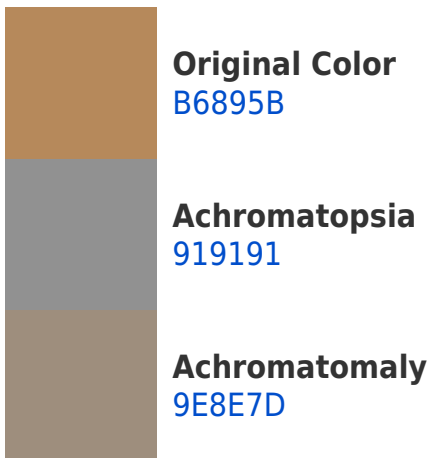


Tritanopia
BA838D

Trichromacy



Monochromacy



CSS Examples

Text

The CSS property to change the color of the text to Hex B6895B is called "color". The color property can be set on classes, ids or directly on the HTML element.

This example shows how text in the color #B6895B looks like.

```
.text, #text, p{  
    color:#B6895B  
}
```

If you want to add a text shadow in that color use the text-shadow property, you can generate a text shadow directly with our [CSS Text Shadow Generator](#).

Here you see how black text with a 4 pixel #B6895B colored shadow looks like.

```
.shadow{ text-shadow: 4px 4px 2px #B6895B
}
```

Border

The CSS property to change the border of an element to Hex B6895B is called "border". The border property can be set on classes, ids or directly on the HTML element.

This example shows the color as border, it can be applied via the CSS property "border" or "border-color".

```
.border, #border, table{ border:4px solid
#B6895B }
```

If only the border color should be changed use the property `border-color`.

```
.border{ border-color:#B6895B }
```

If you want to add a box shadow in that color use:

Here you see how a box with a 4 pixel #B6895B colored shadow looks like.

```
.boxshadow{ -moz-box-shadow:4px 4px 4px  
4px #B6895B; -webkit-box-shadow:4px 4px  
4px 4px #B6895B; box-shadow:4px 4px 4px  
4px #B6895B }
```

Background

The CSS property to change the background color of an element to Hex B6895B is called "background". The background property can be set on classes, ids or directly on the HTML element.

```
.background, #background, body{  
background:#B6895B }
```

If only the background color should be changed can be used:

```
.background{ background-color:#B6895B }
```

This example shows the color as background, it is applied via the CSS property "background".

To optimize and compress your CSS code, you can use our [online CSS compressor and optimizer](#) based on csstidy. If you want to create a linear or radial gradient as background or border, check our [CSS Gradient Generator](#).

Hey! You found this booklet interesting? Support Converting Colors with the new Membership Option!

The pro membership hides all ads, plus gives you double the colors in the color bucket, and more awesome pro features!

[Learn more, Memberships starting at \\$2.50/m!](#)

**Follow me
on Twitter!**

@ConvertingColor