

# Converting Colors

Hex(B68987)

Have a look what the booklet for  
Hex(B68987) contains.

<b>Hex(B68987)</b> .....	3
<i><b>Conversions</b></i> .....	4
<i><b>Details</b></i> .....	6
<i><b>Harmonies</b></i> .....	11
<i><b>Previews</b></i> .....	23
<i><b>Color Blindness Simulation</b></i> .....	26
<i><b>CSS Examples</b></i> .....	29

# **Color**

**Hex(B68987)**

# Conversions

## Conversions Part 1

Format	Color
Hex	B68987
RGB	182, 137, 135
RGB Percent	71%, 54%, 53%
CMY	0.2863, 0.4627, 0.4706
CMYK	0.00, 0.25, 0.26, 0.29
HSL	3°, 24%, 62%
HSV	3°, 26%, 71%
XYZ	32.6102, 29.5857, 26.9135
YIQ	150.2270, 27.4620, 8.9180

# Conversions

## Conversions Part 2

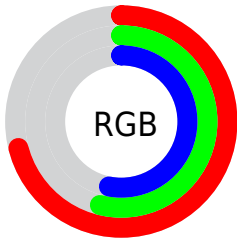
<b>Format</b>	<b>Color</b>
<b>RYB</b>	182, 137, 135
Decimal	11962759
CIELab	61.30, 16.86, 7.75
CIELCh	61, 18.560, 24.684
Yxy	29.5857, 0.3660, 0.3320
Android (android.graphics.Color)	4290152839 (0xFFB68987)
YUV	150.2270, -7.5069, 27.8649
Hunter-Lab	54.3927, 11.8294, 8.7382

# Details

The Hex color **B68987** is a light color, and the websafe version is hex **CC9999**. A complement of this color would be **87B4B6**, and the grayscale version is **969696**.

A 20% lighter version of the original color is **EFBFBC**, and **805755** is the 20% darker color. If you saturate the color by 10%, you get **B67875**, and if you desaturate by 10%, it is **B69A99**.

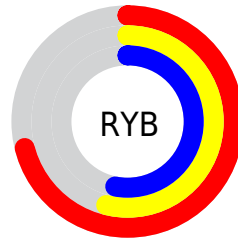
# Distribution



Red (71%)

Green (54%)

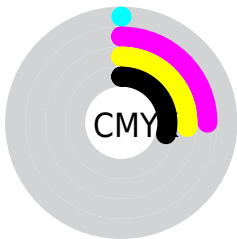
Blue (53%)



Red (71%)

Yellow (54%)

Blue (53%)

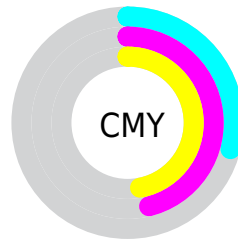


Cyan (0%)

Magenta (25%)

Yellow (26%)

Black (29%)



Cyan (29%)

Magenta (46%)

Yellow (47%)

# Brightness & Saturation Gradients

These gradients show how the Hex color B68987 changes by changing the brightness by 10 percent. The first figure shows a shift by +10% for each color and the second figure -10%.

Similar to the brightness gradients but the following saturation gradients show a change of the Hex color B68987 by changing the saturation by 10% instead.



 B68987

 B68987

FFFFFF

 9B6F6E

 EFBFBC

 805755

 FFDAD8

 663F3E

 FFF7F4

 4D2928

 351414

 210000

 000000

 B68987

 B68987

 B67875

 B69A99

 B66663

 B6ACAB

 B65550

 B6BDBE

 B6433E

 B6CFD0

 B6322C

 B6E0E2

 B6201A

 B6F2F4

 B60F08

 B6FFFF

 B60800

# Harmonies

## Analogous

The Analogous color harmony consists of three colors that are next to each other on the color wheel.



B38998



B68987



B08D7A

# Triad

The Triadic color harmony groups three colors that are evenly spaced from another and form a triangle on the color wheel.



B68987



7F9B81



7D96B4

# Complementary

The Complementary color scheme is a pair of colors which are on the opposite of each other on the color wheel.



B68987



87B4B6

# Split Complementary

Split-complementary colors differ from the complementary color scheme. The scheme consists of three colors, the original color and two neighbors of the complement color.



6C9BAE



B68987



6F9D90

# Square

The Square scheme is like the rectangle color scheme, but the four colors are evenly spaced on the color wheel.



B68987



929776



679DA1



9391B2

# Rectangle

The Rectangle color scheme consists of four colors that form a rectangle on the color wheel.



B68987



A89075



679DA1



7698B3



# Sweetspot

The Sweet Spot groups the original color and five complimentary colors.



B68987



EDDBDA



B687B4



786C6C



F7F7F7



787878



# Same Dimension

The Same Dimension uses a secret algorithm to generate beautiful new colors.



B68987



EDA7A4



B6A087



5C5353



9C0700



1C0100



# Inverse Universe

The Inverse Universe completely reimagines the original color for something new.



87B4B6



A4EAED



879DB6



535B5C



00959C

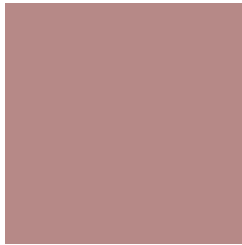


001B1C



# Previews

## White Background



This preview shows how the Hex color B68987 looks on a white background.

## Color Contrast Check

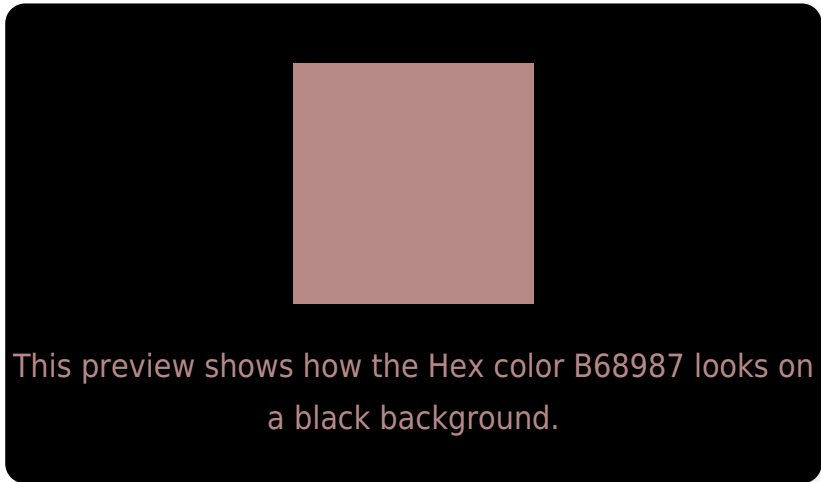
Large Text (above 18pt) WCAG AA ✓ Pass

Any Text WCAG AA × Fail

Large Text (above 18pt) WCAG AAA × Fail

Any Text WCAG AAA × Fail

# Black Background



## Color Contrast Check

Large Text (above 18pt) WCAG AA ✓ Pass

Any Text WCAG AA ✓ Pass

Large Text (above 18pt) WCAG AAA ✓ Pass

Any Text WCAG AAA × Fail

If you want to check with other color combinations, try the [Color Contrast Checker](#).



## Hex B68987 Background



This preview shows how black text looks on a background with the Hex color B68987.

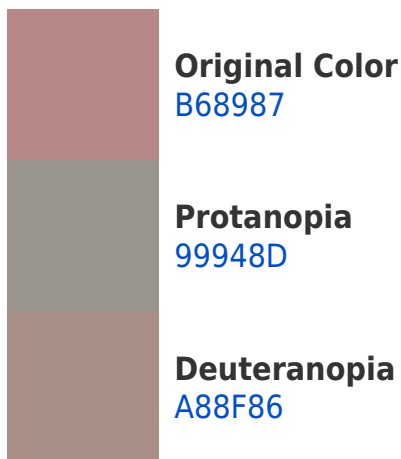


This preview shows how white text looks on a background with the Hex color B68987.

# Color Blindness Simulation

Color vision deficiency is a very complex topic, and I could not describe the different causes any better than Wikipedia does, so if you want to learn more, you should check out their [article about color blindness](#).

## Dichromacy





**Tritanopia**  
B78792

# Trichromacy



**Original Color**  
B68987

**Protanomaly**  
A4908B

**Deuteranomaly**  
AD8D86

**Tritanomaly**  
B7888E

# Monochromacy



**Original Color**  
B68987

**Achromatopsia**  
969696

**Achromatomaly**  
A29191

# CSS Examples

## Text

The CSS property to change the color of the text to Hex B68987 is called "color". The color property can be set on classes, ids or directly on the HTML element.

This example shows how text in the color #B68987 looks like.

```
.text, #text, p{  
    color:#B68987  
}
```

If you want to add a text shadow in that color use the text-shadow property, you can generate a text shadow directly with our [CSS Text Shadow Generator](#).

Here you see how black text with a 4 pixel #B68987 colored shadow looks like.

```
.shadow{ text-shadow: 4px 4px 2px #B68987
}
```

## Border

The CSS property to change the border of an element to Hex B68987 is called "border". The border property can be set on classes, ids or directly on the HTML element.

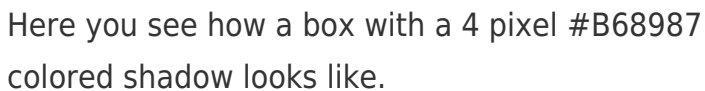
This example shows the color as border, it can be applied via the CSS property "border" or "border-color".

```
.border, #border, table{ border:4px solid
#B68987 }
```

If only the border color should be changed use the property `border-color`.

```
.border{ border-color:#B68987 }
```

If you want to add a box shadow in that color use:



Here you see how a box with a 4 pixel #B68987 colored shadow looks like.

```
.boxshadow{ -moz-box-shadow:4px 4px 4px  
4px #B68987; -webkit-box-shadow:4px 4px  
4px 4px #B68987; box-shadow:4px 4px 4px  
4px #B68987 }
```

# Background

The CSS property to change the background color of an element to Hex B68987 is called "background". The background property can be set on classes, ids or directly on the HTML element.

```
.background, #background, body{  
background:#B68987 }
```

If only the background color should be changed can be used:

```
.background{ background-color:#B68987 }
```

This example shows the color as background, it is applied via the CSS property "background".

To optimize and compress your CSS code, you can use our [online CSS compressor and optimizer](#) based on csstidy. If you want to create a linear or radial gradient as background or border, check our [CSS Gradient Generator](#).



Hey! You found this booklet interesting? Support Converting Colors with the new Membership Option!

The pro membership hides all ads, plus gives you double the colors in the color bucket, and more awesome pro features!

**[Learn more, Memberships starting at \\$2.50/m!](#)**

**Follow me  
on Twitter!**

@ConvertingColor