

Converting Colors

Hex(B6898B)

Have a look what the booklet for
Hex(B6898B) contains.

Hex(B6898B)	3
<i>Conversions</i>	4
<i>Details</i>	6
<i>Harmonies</i>	11
<i>Previews</i>	23
<i>Color Blindness Simulation</i>	26
<i>CSS Examples</i>	29

Color

Hex(B6898B)

Conversions

Conversions Part 1

Format	Color
Hex	B6898B
RGB	182, 137, 139
RGB Percent	71%, 54%, 55%
CMY	0.2863, 0.4627, 0.4549
CMYK	0.00, 0.25, 0.24, 0.29
HSL	357°, 24%, 63%
HSV	357°, 25%, 71%
XYZ	32.8973, 29.7005, 28.4250
YIQ	150.6830, 26.1780, 10.1620

Conversions

Conversions Part 2

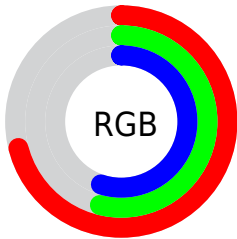
Format	Color
RYB	182, 137, 139
Decimal	11962763
CIELab	61.39, 17.46, 5.62
CIELCh	61, 18.339, 17.833
Yxy	29.7005, 0.3614, 0.3263
Android (android.graphics.Color)	4290152843 (0xFFB6898B)
YUV	150.6830, -5.7597, 27.4650
Hunter-Lab	54.4982, 12.3780, 7.2244

Details

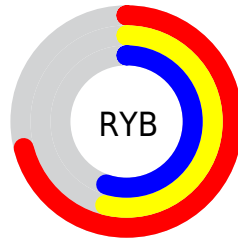
The Hex color **B6898B** is a light color, and the websafe version is hex **CC9999**. A complement of this color would be **89B6B4**, and the grayscale version is **979797**.

A 20% lighter version of the original color is **EFBFC0**, and **805759** is the 20% darker color. If you saturate the color by 10%, you get **B6777A**, and if you desaturate by 10%, it is **B69B9C**.

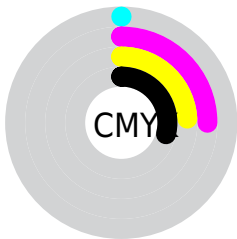
Distribution



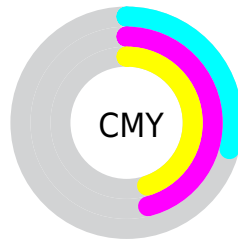
- Red (71%)
- Green (54%)
- Blue (55%)



- Red (71%)
- Yellow (54%)
- Blue (55%)



- Cyan (0%)
- Magenta (25%)
- Yellow (24%)
- Black (29%)



- Cyan (29%)
- Magenta (46%)
- Yellow (45%)

Brightness & Saturation Gradients

These gradients show how the Hex color B6898B changes by changing the brightness by 10 percent. The first figure shows a shift by +10% for each color and the second figure -10%.

Similar to the brightness gradients but the following saturation gradients show a change of the Hex color B6898B by changing the saturation by 10% instead.



B6898B



B6898B

FFFFFF



9B6F72



EFBFC0



805759



FFDADC



663F42



FFF7F9



4D292C



351417



220000



000000



B6898B



B6898B



B6777A



B69B9C

 B66568

 B6ADAE

 B65257

 B6C0BF

 B64045

 B6D2D1

 B62E34

 B6E4E2

 B61C23

 B6F6F3

 B60A11

 B6FFFF

 B60008

Harmonies

Analogous

The Analogous color harmony consists of three colors that are next to each other on the color wheel.



B1899C



B6898B



B28C7D

Triad

The Triadic color harmony groups three colors that are evenly spaced from another and form a triangle on the color wheel.



B6898B



849B7E



7998B3

Complementary

The Complementary color scheme is a pair of colors which are on the opposite of each other on the color wheel.



B6898B



89B6B4

Split Complementary

Split-complementary colors differ from the complementary color scheme. The scheme consists of three colors, the original color and two neighbors of the complement color.



6A9CAC



B6898B



739D8D

Square

The Square scheme is like the rectangle color scheme, but the four colors are evenly spaced on the color wheel.



B6898B



969675



689D9E



8E92B3

Rectangle

The Rectangle color scheme consists of four colors that form a rectangle on the color wheel.



B6898B



AB8F77



689D9E



7399B2

Sweetspot

The Sweet Spot groups the original color and five complimentary colors.



B6898B



EDDDDD



B489B6



786E6F



F7F7F7



787878

Same Dimension

The Same Dimension uses a secret algorithm to generate beautiful new colors.



B6898B



EDA6A9



B69D89



5C5353



9C0007



1C0001

Inverse Universe

The Inverse Universe completely reimagines the original color for something new.



B6898B



EDA6A9



89A2B6



5C5353



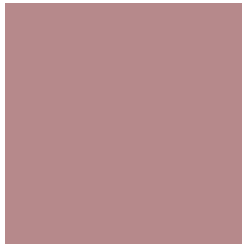
9C0007



1C0001

Previews

White Background



This preview shows how the Hex color B6898B looks on a white background.

Color Contrast Check

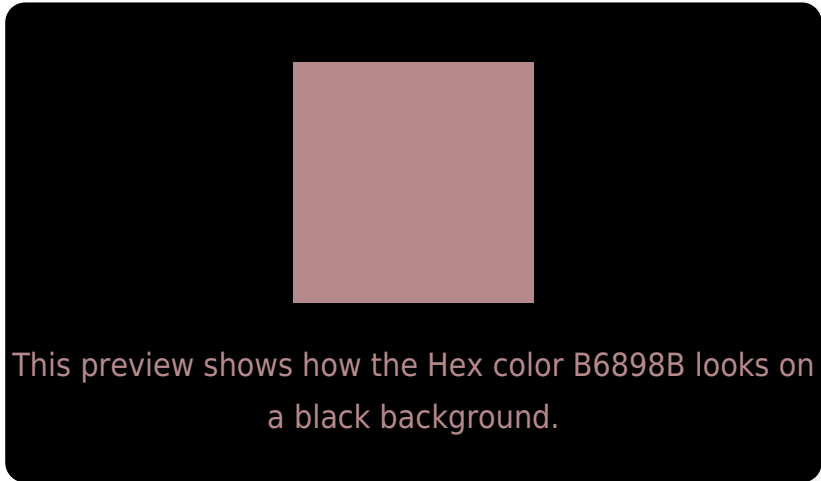
Large Text (above 18pt) WCAG AA ✓ Pass

Any Text WCAG AA ✗ Fail

Large Text (above 18pt) WCAG AAA ✗ Fail

Any Text WCAG AAA ✗ Fail

Black Background



Color Contrast Check

Large Text (above 18pt) WCAG AA ✓ Pass

Any Text WCAG AA ✓ Pass

Large Text (above 18pt) WCAG AAA ✓ Pass

Any Text WCAG AAA × Fail

If you want to check with other color combinations, try the [Color Contrast Checker](#).

Hex B6898B Background



This preview shows how black text looks on a background with the Hex color B6898B.



This preview shows how white text looks on a background with the Hex color B6898B.

Color Blindness Simulation

Color vision deficiency is a very complex topic, and I could not describe the different causes any better than Wikipedia does, so if you want to learn more, you should check out their [article about color blindness](#).

Dichromacy



Original Color
B6898B

Protanopia
989491

Deuteranopia
A78F8A



Tritanopia
B78892

Trichromacy



Original Color
B6898B

Protanomaly
A3908F

Deuteranomaly
AC8D8A

Tritanomaly
B7888F

Monochromacy



Original Color
B6898B

Achromatopsia
979797

Achromatomaly
A29293

CSS Examples

Text

The CSS property to change the color of the text to Hex B6898B is called "color". The color property can be set on classes, ids or directly on the HTML element.

This example shows how text in the color #B6898B looks like.

```
.text, #text, p{  
    color:#B6898B  
}
```

If you want to add a text shadow in that color use the text-shadow property, you can generate a text shadow directly with our [CSS Text Shadow Generator](#).

Here you see how black text with a 4 pixel #B6898B colored shadow looks like.

```
.shadow{ text-shadow: 4px 4px 2px #B6898B
}
```

Border

The CSS property to change the border of an element to Hex B6898B is called "border". The border property can be set on classes, ids or directly on the HTML element.

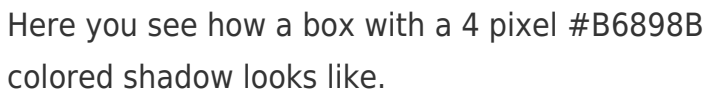
This example shows the color as border, it can be applied via the CSS property "border" or "border-color".

```
.border, #border, table{ border:4px solid
#B6898B }
```

If only the border color should be changed use the property `border-color`.

```
.border{ border-color:#B6898B }
```

If you want to add a box shadow in that color use:



Here you see how a box with a 4 pixel #B6898B colored shadow looks like.

```
.boxshadow{ -moz-box-shadow:4px 4px 4px  
4px #B6898B; -webkit-box-shadow:4px 4px  
4px 4px #B6898B; box-shadow:4px 4px 4px  
4px #B6898B }
```

Background

The CSS property to change the background color of an element to Hex B6898B is called "background". The background property can be set on classes, ids or directly on the HTML element.

```
.background, #background, body{  
background:#B6898B }
```

If only the background color should be changed can be used:

```
.background{ background-color:#B6898B }
```

This example shows the color as background, it is applied via the CSS property "background".

To optimize and compress your CSS code, you can use our [online CSS compressor and optimizer](#) based on csstidy. If you want to create a linear or radial gradient as background or border, check our [CSS Gradient Generator](#).

Hey! You found this booklet interesting? Support Converting Colors with the new Membership Option!

The pro membership hides all ads, plus gives you double the colors in the color bucket, and more awesome pro features!

[Learn more, Memberships starting at \\$2.50/m!](#)

**Follow me
on Twitter!**

@ConvertingColor