

Converting Colors

Hex(B68991)

Have a look what the booklet for
Hex(B68991) contains.

Hex(B68991)	3
<i>Conversions</i>	4
<i>Details</i>	6
<i>Harmonies</i>	11
<i>Previews</i>	23
<i>Color Blindness Simulation</i>	26
<i>CSS Examples</i>	29

Color

Hex(B68991)

Conversions

Conversions Part 1

Format	Color
Hex	B68991
RGB	182, 137, 145
RGB Percent	71%, 54%, 57%
CMY	0.2863, 0.4627, 0.4314
CMYK	0.00, 0.25, 0.20, 0.29
HSL	349°, 24%, 63%
HSV	349°, 25%, 71%
XYZ	33.3479, 29.8807, 30.7980
YIQ	151.3670, 24.2520, 12.0280

Conversions

Conversions Part 2

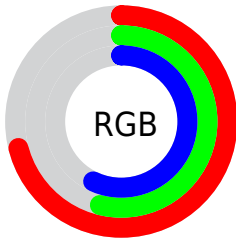
Format	Color
R_{YB}	182, 137, 145
Decimal	11962769
CIE _{Lab}	61.55, 18.38, 2.42
CIE _{LCh}	62, 18.539, 7.511
Yxy	29.8807, 0.3547, 0.3178
Android (android.graphics.Color)	4290152849 (0xFFB68991)
YUV	151.3670, -3.1389, 26.8651
Hunter-Lab	54.6633, 13.2350, 4.8595

Details

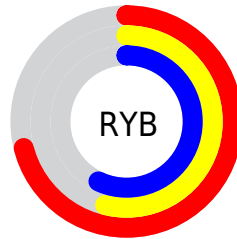
The Hex color **B68991** is a light color, and the websafe version is hex **CC9999**. A complement of this color would be **89B6AE**, and the grayscale version is **979797**.

A 20% lighter version of the original color is **EFBFC7**, and **80575F** is the 20% darker color. If you saturate the color by 10%, you get **B67782**, and if you desaturate by 10%, it is **B69BA0**.

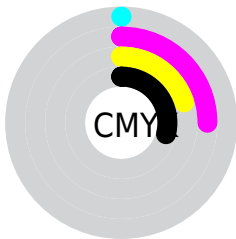
Distribution



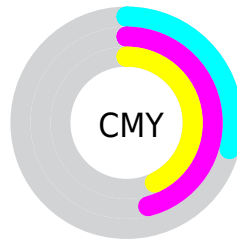
- Red (71%)
- Green (54%)
- Blue (57%)



- Red (71%)
- Yellow (54%)
- Blue (57%)



- Cyan (0%)
- Magenta (25%)
- Yellow (20%)
- Black (29%)



- Cyan (29%)
- Magenta (46%)
- Yellow (43%)

Brightness & Saturation Gradients

These gradients show how the Hex color B68991 changes by changing the brightness by 10 percent. The first figure shows a shift by +10% for each color and the second figure -10%.

Similar to the brightness gradients but the following saturation gradients show a change of the Hex color B68991 by changing the saturation by 10% instead.

 B68991

 B68991

FFFFFF

 9B6F77

 EFBFC7

 80575F

 FFDBE3

 673F47

 FFF7FF

 4E2931

 36131C

 230001

 000000

 B68991

 B68991

 B67782

 B69BA0

 B66573

 B6ADAF

 B65264

 B6C0BE

 B64055

 B6D2CD

 B62E46

 B6E4DC

 B61C37

 B6F6EB

 B60A28

 B6FFFA

 B60020

 B6FFFF

Harmonies

Analogous

The Analogous color harmony consists of three colors that are next to each other on the color wheel.



AD8BA2



B68991



B58B81

Triad

The Triadic color harmony groups three colors that are evenly spaced from another and form a triangle on the color wheel.



B68991



8B9A7A



739AB2

Complementary

The Complementary color scheme is a pair of colors which are on the opposite of each other on the color wheel.



B68991



89B6AE

Split Complementary

Split-complementary colors differ from the complementary color scheme. The scheme consists of three colors, the original color and two neighbors of the complement color.



689DA8



B68991



789D88

Square

The Square scheme is like the rectangle color scheme, but the four colors are evenly spaced on the color wheel.



B68991



9D9574



6B9E98



8795B5

Rectangle

The Rectangle color scheme consists of four colors that form a rectangle on the color wheel.



B68991



B08E7A



6B9E98



6E9BB0

Sweetspot

The Sweet Spot groups the original color and five complimentary colors.



B68991



EDDDE0



AE89B6



786E70



F7F7F7



787878

Same Dimension

The Same Dimension uses a secret algorithm to generate beautiful new colors.



B68991



EDA6B3



B69789



5C5354



9C001C



1C0005

Inverse Universe

The Inverse Universe completely reimagines the original color for something new.



B68991



EDA6B3



89A8B6



5C5354



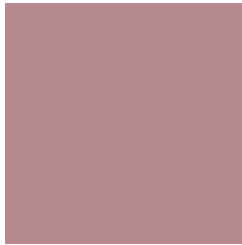
9C001C



1C0005

Previews

White Background



This preview shows how the Hex color B68991 looks on a white background.

Color Contrast Check

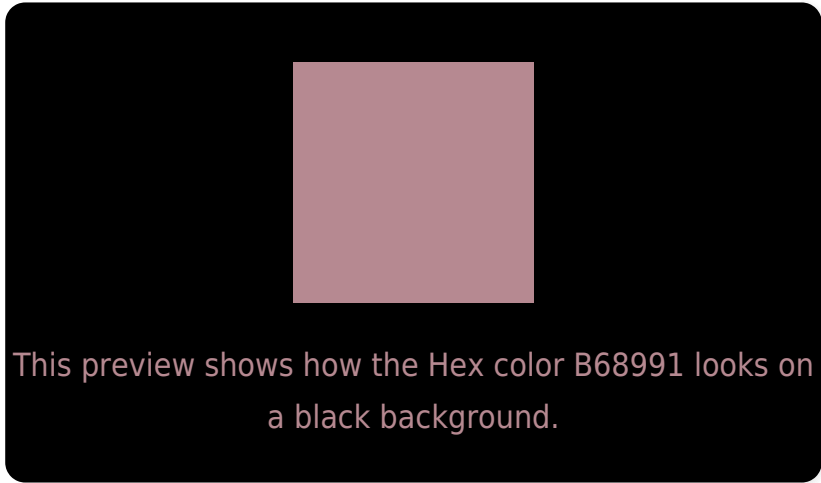
Large Text (above 18pt) WCAG AA ✓ Pass

Any Text WCAG AA × Fail

Large Text (above 18pt) WCAG AAA × Fail

Any Text WCAG AAA × Fail

Black Background



Color Contrast Check

Large Text (above 18pt) WCAG AA ✓ Pass

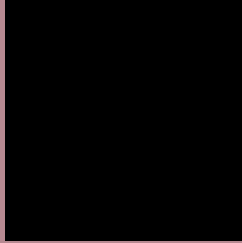
Any Text WCAG AA ✓ Pass

Large Text (above 18pt) WCAG AAA ✓ Pass

Any Text WCAG AAA × Fail

If you want to check with other color combinations, try the [Color Contrast Checker](#).

Hex B68991 Background



This preview shows how black text looks on a background with the Hex color B68991.

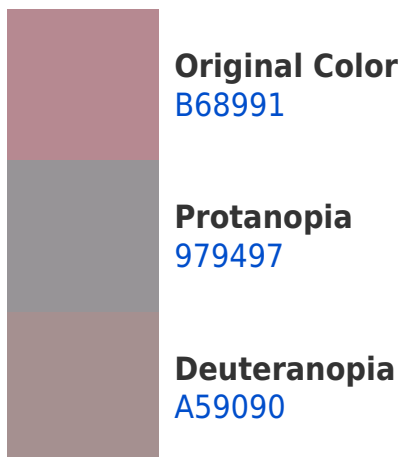


This preview shows how white text looks on a background with the Hex color B68991.

Color Blindness Simulation

Color vision deficiency is a very complex topic, and I could not describe the different causes any better than Wikipedia does, so if you want to learn more, you should check out their [article about color blindness](#).

Dichromacy





Tritanopia
B68993

Trichromacy



Original Color
B68991

Protanomaly
A29095

Deuteranomaly
AB8D90

Tritanomaly
B68992

Monochromacy



Original Color
B68991

Achromatopsia
979797

Achromatomaly
A29295

CSS Examples

Text

The CSS property to change the color of the text to Hex B68991 is called "color". The color property can be set on classes, ids or directly on the HTML element.

This example shows how text in the color #B68991 looks like.

```
.text, #text, p{  
    color:#B68991  
}
```

If you want to add a text shadow in that color use the text-shadow property, you can generate a text shadow directly with our [CSS Text Shadow Generator](#).

Here you see how black text with a 4 pixel #B68991 colored shadow looks like.

```
.shadow{ text-shadow: 4px 4px 2px #B68991
}
```

Border

The CSS property to change the border of an element to Hex B68991 is called "border". The border property can be set on classes, ids or directly on the HTML element.

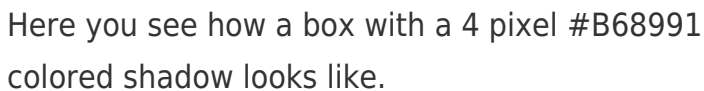
This example shows the color as border, it can be applied via the CSS property "border" or "border-color".

```
.border, #border, table{ border:4px solid
#B68991 }
```

If only the border color should be changed use the property `border-color`.

```
.border{ border-color:#B68991 }
```

If you want to add a box shadow in that color use:



Here you see how a box with a 4 pixel #B68991 colored shadow looks like.

```
.boxshadow{ -moz-box-shadow:4px 4px 4px  
4px #B68991; -webkit-box-shadow:4px 4px  
4px 4px #B68991; box-shadow:4px 4px 4px  
4px #B68991 }
```

Background

The CSS property to change the background color of an element to Hex B68991 is called "background". The background property can be set on classes, ids or directly on the HTML element.

```
.background, #background, body{  
background:#B68991 }
```

If only the background color should be changed can be used:

```
.background{ background-color:#B68991 }
```

This example shows the color as background, it is applied via the CSS property "background".

To optimize and compress your CSS code, you can use our [online CSS compressor and optimizer](#) based on csstidy. If you want to create a linear or radial gradient as background or border, check our [CSS Gradient Generator](#).

Hey! You found this booklet interesting? Support Converting Colors with the new Membership Option!

The pro membership hides all ads, plus gives you double the colors in the color bucket, and more awesome pro features!

[Learn more, Memberships starting at \\$2.50/m!](#)

**Follow me
on Twitter!**

@ConvertingColor