

# Converting Colors

Hex(B68B8F)

Have a look what the booklet for  
Hex(B68B8F) contains.

<b>Hex(B68B8F)</b> .....	3
<i><b>Conversions</b></i> .....	4
<i><b>Details</b></i> .....	6
<i><b>Harmonies</b></i> .....	11
<i><b>Previews</b></i> .....	23
<i><b>Color Blindness Simulation</b></i> .....	26
<i><b>CSS Examples</b></i> .....	29

# **Color**

**Hex(B68B8F)**

# Conversions

## Conversions Part 1

Format	Color
Hex	B68B8F
RGB	182, 139, 143
RGB Percent	71%, 55%, 56%
CMY	0.2863, 0.4549, 0.4392
CMYK	0.00, 0.24, 0.21, 0.29
HSL	354°, 23%, 63%
HSV	354°, 24%, 71%
XYZ	33.4819, 30.3935, 30.0884
YIQ	152.3130, 24.3440, 10.3600

# Conversions

## Conversions Part 2

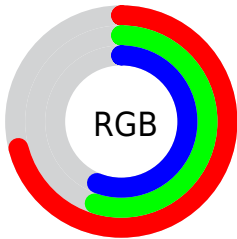
<b>Format</b>	<b>Color</b>
<a href="#">RYB</a>	<a href="#">182, 139, 143</a>
Decimal	<a href="#">11963279</a>
CIELab	<a href="#">61.99, 16.95, 4.20</a>
CIElCh	<a href="#">62, 17.463, 13.916</a>
Yxy	<a href="#">30.3935, 0.3563, 0.3235</a>
Android (android.graphics.Color)	<a href="#">4290153359 (0xFFB68B8F)</a>
YUV	<a href="#">152.3130, -4.5913, 26.0355</a>
Hunter-Lab	<a href="#">55.1303, 11.9293, 6.2325</a>

# Details

The Hex color **B68B8F** is a light color, and the websafe version is hex **CC9999**. A complement of this color would be **8BB6B2**, and the grayscale version is **989898**.

A 20% lighter version of the original color is **EFC1C5**, and **80595D** is the 20% darker color. If you saturate the color by 10%, you get **B6797E**, and if you desaturate by 10%, it is **B69DA0**.

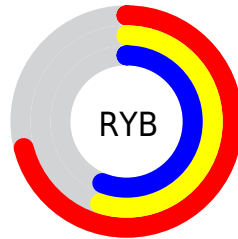
# Distribution



Red (71%)

Green (55%)

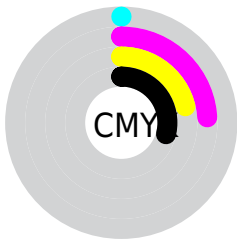
Blue (56%)



Red (71%)

Yellow (55%)

Blue (56%)

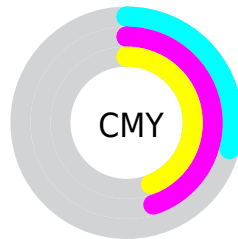


Cyan (0%)

Magenta (24%)

Yellow (21%)

Black (29%)



Cyan (29%)

Magenta (45%)

Yellow (44%)

# Brightness & Saturation Gradients

These gradients show how the Hex color B68B8F changes by changing the brightness by 10 percent. The first figure shows a shift by +10% for each color and the second figure -10%.

Similar to the brightness gradients but the following saturation gradients show a change of the Hex color B68B8F by changing the saturation by 10% instead.



 B68B8F

 B68B8F

FFFFFF

 9B7175

 EFC1C5

 80595D

 FFDDE1

 674145

 FFF9FD

 4E2B2F

 36151A

 230000

 000000

 B68B8F

 B68B8F

 B6797E

 B69DA0

 B6676E

 B6AFB0

 B6545D

 B6C2C1

 B6424D

 B6D4D1

 B6303C

 B6E6E2

 B61E2C

 B6F8F2

 B60C1B

 B6FFFF

 B60011

# Harmonies

## Analogous

The Analogous color harmony consists of three colors that are next to each other on the color wheel.



B08C9F



B68B8F



B48D81

# Triad

The Triadic color harmony groups three colors that are evenly spaced from another and form a triangle on the color wheel.



B68B8F



899B7F



7A9AB3

# Complementary

The Complementary color scheme is a pair of colors which are on the opposite of each other on the color wheel.



B68B8F



8BB6B2

# Split Complementary

Split-complementary colors differ from the complementary color scheme. The scheme consists of three colors, the original color and two neighbors of the complement color.



6D9DAB



B68B8F



789E8D

# Square

The Square scheme is like the rectangle color scheme, but the four colors are evenly spaced on the color wheel.



B68B8F



9A9778



6D9F9D



8E95B4

# Rectangle

The Rectangle color scheme consists of four colors that form a rectangle on the color wheel.



B68B8F



AE907A



6D9F9D



759BB1



# Sweetspot

The Sweet Spot groups the original color and five complimentary colors.



B68B8F



EDDDDE



B28BB6



786E6F



F7F7F7



787878



# Same Dimension

The Same Dimension uses a secret algorithm to generate beautiful new colors.



B68B8F



EDABB1



B69C8B



5C5353



9C000E



1C0003



# Inverse Universe

The Inverse Universe completely reimagines the original color for something new.



B68B8F



EDABB1



8BA5B6



5C5353



9C000E

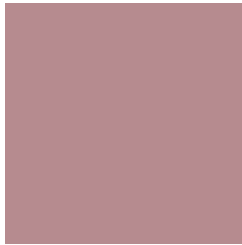


1C0003



# Previews

## White Background



This preview shows how the Hex color B68B8F looks on a white background.

## Color Contrast Check

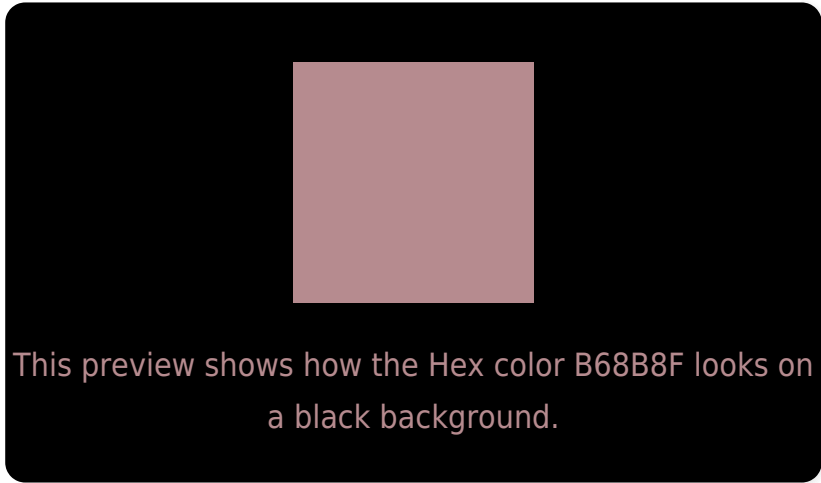
Large Text (above 18pt) WCAG AA × Fail

Any Text WCAG AA × Fail

Large Text (above 18pt) WCAG AAA × Fail

Any Text WCAG AAA × Fail

# Black Background



## Color Contrast Check

Large Text (above 18pt) WCAG AA ✓ Pass

Any Text WCAG AA ✓ Pass

Large Text (above 18pt) WCAG AAA ✓ Pass

Any Text WCAG AAA ✓ Pass

If you want to check with other color combinations, try the [Color Contrast Checker](#).



## Hex B68B8F Background



This preview shows how black text looks on a background with the Hex color B68B8F.



This preview shows how white text looks on a background with the Hex color B68B8F.

# Color Blindness Simulation

Color vision deficiency is a very complex topic, and I could not describe the different causes any better than Wikipedia does, so if you want to learn more, you should check out their [article about color blindness](#).


## Dichromacy



**Original Color**  
B68B8F

**Protanopia**  
999595

**Deuteranopia**  
A8918E



**Tritanopia**  
B78A95

# Trichromacy



**Original Color**  
B68B8F

**Protanomaly**  
A49193

**Deuteranomaly**  
AD8F8E

**Tritanomaly**  
B78A93

# Monochromacy



**Original Color**  
B68B8F

**Achromatopsia**  
989898

**Achromatomaly**  
A39395

# CSS Examples

## Text

The CSS property to change the color of the text to Hex B68B8F is called "color". The color property can be set on classes, ids or directly on the HTML element.

This example shows how text in the color #B68B8F looks like.

```
.text, #text, p{  
    color:#B68B8F  
}
```

If you want to add a text shadow in that color use the text-shadow property, you can generate a text shadow directly with our [CSS Text Shadow Generator](#).

Here you see how black text with a 4 pixel #B68B8F colored shadow looks like.

```
.shadow{ text-shadow: 4px 4px 2px #B68B8F
}
```

## Border

The CSS property to change the border of an element to Hex B68B8F is called "border". The border property can be set on classes, ids or directly on the HTML element.

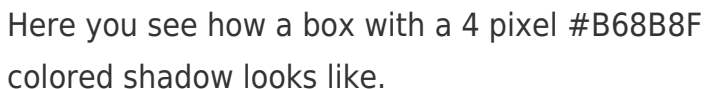
This example shows the color as border, it can be applied via the CSS property "border" or "border-color".

```
.border, #border, table{ border:4px solid
#B68B8F }
```

If only the border color should be changed use the property `border-color`.

```
.border{ border-color:#B68B8F }
```

If you want to add a box shadow in that color use:



Here you see how a box with a 4 pixel #B68B8F colored shadow looks like.

```
.boxshadow{ -moz-box-shadow:4px 4px 4px  
4px #B68B8F; -webkit-box-shadow:4px 4px  
4px 4px #B68B8F; box-shadow:4px 4px 4px  
4px #B68B8F }
```

# Background

The CSS property to change the background color of an element to Hex B68B8F is called "background". The background property can be set on classes, ids or directly on the HTML element.

```
.background, #background, body{  
background:#B68B8F }
```

If only the background color should be changed can be used:

```
.background{ background-color:#B68B8F }
```

This example shows the color as background, it is applied via the CSS property "background".

To optimize and compress your CSS code, you can use our [online CSS compressor and optimizer](#) based on csstidy. If you want to create a linear or radial gradient as background or border, check our [CSS Gradient Generator](#).



Hey! You found this booklet interesting? Support Converting Colors with the new Membership Option!

The pro membership hides all ads, plus gives you double the colors in the color bucket, and more awesome pro features!

**[Learn more, Memberships starting at \\$2.50/m!](#)**

**Follow me  
on Twitter!**

@ConvertingColor