

# Converting Colors

Hex(B68C8C)

Have a look what the booklet for  
Hex(B68C8C) contains.

<b>Hex(B68C8C)</b> .....	3
<i><b>Conversions</b></i> .....	4
<i><b>Details</b></i> .....	6
<i><b>Harmonies</b></i> .....	11
<i><b>Previews</b></i> .....	23
<i><b>Color Blindness Simulation</b></i> .....	26
<i><b>CSS Examples</b></i> .....	29

# **Color**

**Hex(B68C8C)**

# Conversions

## Conversions Part 1

Format	Color
Hex	B68C8C
RGB	182, 140, 140
RGB Percent	71%, 55%, 55%
CMY	0.2863, 0.4510, 0.4510
CMYK	0.00, 0.23, 0.23, 0.29
HSL	0°, 22%, 63%
HSV	0°, 23%, 71%
XYZ	33.4031, 30.5947, 28.9558
YIQ	152.5580, 25.0320, 8.9040

# Conversions

## Conversions Part 2

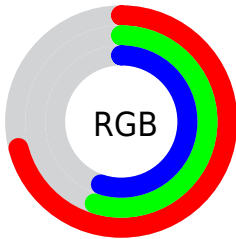
Format	Color
R <sub>Y</sub> B	182, 140, 140
Decimal	11963532
CIE Lab	62.16, 15.93, 6.15
CIE LCh	62, 17.079, 21.111
Yxy	30.5947, 0.3594, 0.3291
Android (android.graphics.Color)	4290153612 (0xFFB68C8C)
YUV	152.5580, -6.1911, 25.8206
Hunter-Lab	55.3125, 10.9990, 7.6807

# Details

The Hex color **B68C8C** is a light color, and the websafe version is hex **CC9999**. A complement of this color would be **8CB6B6**, and the grayscale version is **999999**.

A 20% lighter version of the original color is **EFC2C1**, and **805A5A** is the 20% darker color. If you saturate the color by 10%, you get **B67A7A**, and if you desaturate by 10%, it is **B69E9E**.

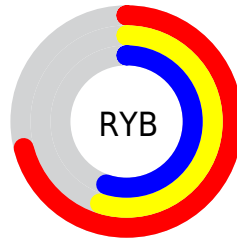
# Distribution



Red (71%)

Green (55%)

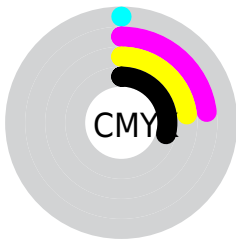
Blue (55%)



Red (71%)

Yellow (55%)

Blue (55%)

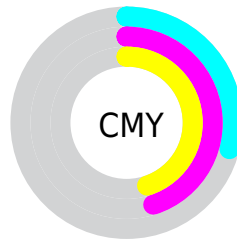


Cyan (0%)

Magenta (23%)

Yellow (23%)

Black (29%)



Cyan (29%)

Magenta (45%)

Yellow (45%)

# Brightness & Saturation Gradients

These gradients show how the Hex color B68C8C changes by changing the brightness by 10 percent. The first figure shows a shift by +10% for each color and the second figure -10%.

Similar to the brightness gradients but the following saturation gradients show a change of the Hex color B68C8C by changing the saturation by 10% instead.



 B68C8C

 B68C8C

FFFFFF

 9B7273

 EFC2C1

 805A5A

 FFDEDD

 674243

 FFFAFA

 4E2C2D

 361618

 220000

 000000

 B68C8C

 B68C8C

 B67A7A

 B69E9E

 B66868

 B6B0B0

 B65555

 B6C3C3

 B64343

 B6D5D5

 B63131

 B6E7E7

 B61F1F

 B6F9F9

 B60D0D

 B6FFFF

 B60000

# Harmonies

## Analogous

The Analogous color harmony consists of three colors that are next to each other on the color wheel.



B28C9B



B68C8C



B28F7F

# Triad

The Triadic color harmony groups three colors that are evenly spaced from another and form a triangle on the color wheel.



B68C8C



859D83



7F99B4

# Complementary

The Complementary color scheme is a pair of colors which are on the opposite of each other on the color wheel.



B68C8C



8CB6B6

# Split Complementary

Split-complementary colors differ from the complementary color scheme. The scheme consists of three colors, the original color and two neighbors of the complement color.



719DAD



B68C8C



769F91

# Square

The Square scheme is like the rectangle color scheme, but the four colors are evenly spaced on the color wheel.



B68C8C



97997A



6E9FA1



9394B2

# Rectangle

The Rectangle color scheme consists of four colors that form a rectangle on the color wheel.



B68C8C



AB927A



6E9FA1



7A9AB2



# Sweetspot

The Sweet Spot groups the original color and five complimentary colors.



B68C8C



EDDDDD



B68CB6



786E6E



F7F7F7



787878



# Same Dimension

The Same Dimension uses a secret algorithm to generate beautiful new colors.



B68C8C



EDABAB



B6A18C



5C5353



9C0000



1C0000



# Inverse Universe

The Inverse Universe completely reimagines the original color for something new.



8CB6B6



ABEDED



8CA1B6



535C5C



009C9C

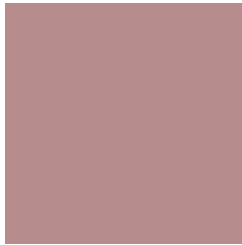


001C1C



# Previews

## White Background



This preview shows how the Hex color B68C8C looks on a white background.

## Color Contrast Check

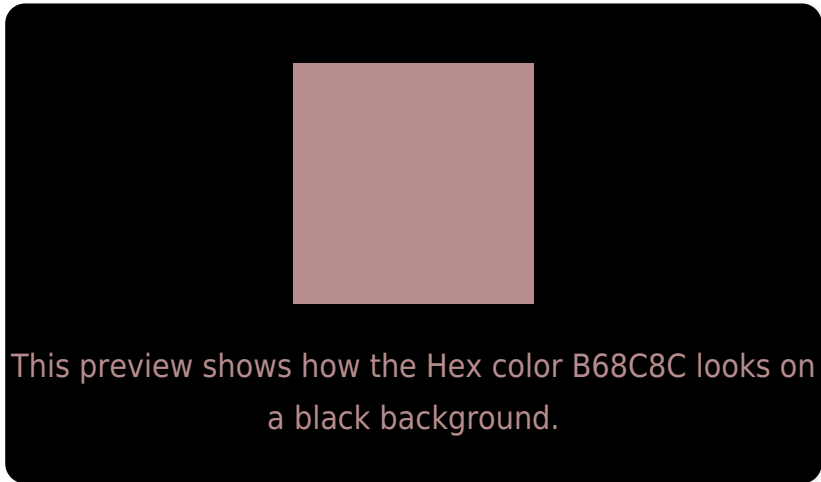
Large Text (above 18pt) WCAG AA × Fail

Any Text WCAG AA × Fail

Large Text (above 18pt) WCAG AAA × Fail

Any Text WCAG AAA × Fail

# Black Background



## Color Contrast Check

Large Text (above 18pt) WCAG AA ✓ Pass

Any Text WCAG AA ✓ Pass

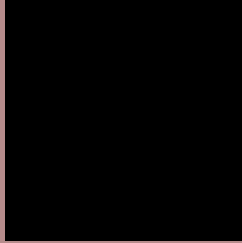
Large Text (above 18pt) WCAG AAA ✓ Pass

Any Text WCAG AAA ✓ Pass

If you want to check with other color combinations, try the [Color Contrast Checker](#).



## Hex B68C8C Background



This preview shows how black text looks on a background with the Hex color B68C8C.



This preview shows how white text looks on a background with the Hex color B68C8C.

# Color Blindness Simulation

Color vision deficiency is a very complex topic, and I could not describe the different causes any better than Wikipedia does, so if you want to learn more, you should check out their [article about color blindness](#).

## Dichromacy



**Original Color**  
B68C8C

**Protanopia**  
9A9691

**Deuteranopia**  
A9918B



**Tritanopia**  
B78B95

# Trichromacy



**Original Color**  
B68C8C

**Protanomaly**  
A4928F

**Deuteranomaly**  
AE8F8B

**Tritanomaly**  
B78B92

# Monochromacy



**Original Color**  
B68C8C

**Achromatopsia**  
999999

**Achromatomaly**  
A49494

# CSS Examples

## Text

The CSS property to change the color of the text to Hex B68C8C is called "color". The color property can be set on classes, ids or directly on the HTML element.

This example shows how text in the color #B68C8C looks like.

```
.text, #text, p{  
    color:#B68C8C  
}
```

If you want to add a text shadow in that color use the text-shadow property, you can generate a text shadow directly with our [CSS Text Shadow Generator](#).

Here you see how black text with a 4 pixel #B68C8C colored shadow looks like.

```
.shadow{ text-shadow: 4px 4px 2px #B68C8C
}
```

## Border

The CSS property to change the border of an element to Hex B68C8C is called "border". The border property can be set on classes, ids or directly on the HTML element.

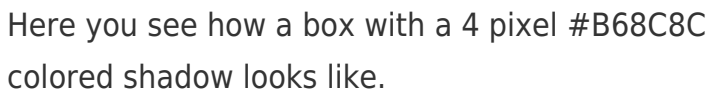
This example shows the color as border, it can be applied via the CSS property "border" or "border-color".

```
.border, #border, table{ border:4px solid
#B68C8C }
```

If only the border color should be changed use the property `border-color`.

```
.border{ border-color:#B68C8C }
```

If you want to add a box shadow in that color use:



Here you see how a box with a 4 pixel #B68C8C colored shadow looks like.

```
.boxshadow{ -moz-box-shadow:4px 4px 4px  
4px #B68C8C; -webkit-box-shadow:4px 4px  
4px 4px #B68C8C; box-shadow:4px 4px 4px  
4px #B68C8C }
```

# Background

The CSS property to change the background color of an element to Hex B68C8C is called "background". The background property can be set on classes, ids or directly on the HTML element.

```
.background, #background, body{  
background:#B68C8C }
```

If only the background color should be changed can be used:

```
.background{ background-color:#B68C8C }
```

This example shows the color as background, it is applied via the CSS property "background".

To optimize and compress your CSS code, you can use our [online CSS compressor and optimizer](#) based on csstidy. If you want to create a linear or radial gradient as background or border, check our [CSS Gradient Generator](#).



Hey! You found this booklet interesting? Support Converting Colors with the new Membership Option!

The pro membership hides all ads, plus gives you double the colors in the color bucket, and more awesome pro features!

**[Learn more, Memberships starting at \\$2.50/m!](#)**

**Follow me  
on Twitter!**

@ConvertingColor