

Converting Colors

Hex(B68D8D)

Have a look what the booklet for
Hex(B68D8D) contains.

Hex(B68D8D)	3
<i>Conversions</i>	4
<i>Details</i>	6
<i>Harmonies</i>	11
<i>Previews</i>	23
<i>Color Blindness Simulation</i>	26
<i>CSS Examples</i>	29

Color

Hex(B68D8D)

Conversions

Conversions Part 1

Format	Color
Hex	B68D8D
RGB	182, 141, 141
RGB Percent	71%, 55%, 55%
CMY	0.2863, 0.4471, 0.4471
CMYK	0.00, 0.23, 0.23, 0.29
HSL	0°, 22%, 63%
HSV	0°, 23%, 71%
XYZ	33.6240, 30.9179, 29.3949
YIQ	153.2590, 24.4360, 8.6920

Conversions

Conversions Part 2

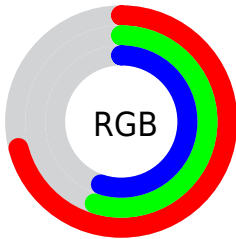
Format	Color
RYB	182, 141, 141
Decimal	11963789
CIELab	62.44, 15.53, 5.98
CIElCh	62, 16.638, 21.056
Yxy	30.9179, 0.3579, 0.3291
Android (android.graphics.Color)	4290153869 (0xFFB68D8D)
YUV	153.2590, -6.0437, 25.2059
Hunter-Lab	55.6039, 10.6332, 7.5792

Details

The Hex color **B68D8D** is a light color, and the websafe version is hex **CC9999**. A complement of this color would be **8DB6B6**, and the grayscale version is **999999**.

A 20% lighter version of the original color is **EFC3C3**, and **805B5B** is the 20% darker color. If you saturate the color by 10%, you get **B67B7B**, and if you desaturate by 10%, it is **B69F9F**.

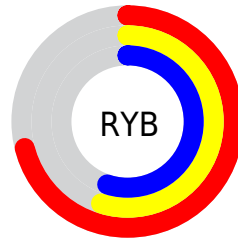
Distribution



Red (71%)

Green (55%)

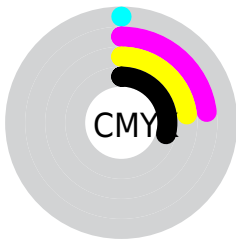
Blue (55%)



Red (71%)

Yellow (55%)

Blue (55%)

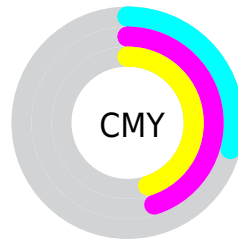


Cyan (0%)

Magenta (23%)

Yellow (23%)

Black (29%)



Cyan (29%)

Magenta (45%)

Yellow (45%)

Brightness & Saturation Gradients

These gradients show how the Hex color B68D8D changes by changing the brightness by 10 percent. The first figure shows a shift by +10% for each color and the second figure -10%.

Similar to the brightness gradients but the following saturation gradients show a change of the Hex color B68D8D by changing the saturation by 10% instead.

 B68D8D

 B68D8D

FFFFFF

 9B7373

 EFC3C3

 805B5B

 FFDFDE

 674344

 FFFBFB

 4E2C2D

 361719

 230000

 000000

 B68D8D

 B68D8D

 B67B7B

 B69F9F

 B66969

 B6B1B1

 B65656

 B6C4C4

 B64444

 B6D6D6

 B63232

 B6E8E8

 B62020

 B6FAFA

 B60E0E

 B6FFFF

 B60000

Harmonies

Analogous

The Analogous color harmony consists of three colors that are next to each other on the color wheel.



B28D9C



B68D8D



B29081

Triad

The Triadic color harmony groups three colors that are evenly spaced from another and form a triangle on the color wheel.



B68D8D



869D84



819AB4

Complementary

The Complementary color scheme is a pair of colors which are on the opposite of each other on the color wheel.



B68D8D



8DB6B6

Split Complementary

Split-complementary colors differ from the complementary color scheme. The scheme consists of three colors, the original color and two neighbors of the complement color.



739DAD



B68D8D



789F92

Square

The Square scheme is like the rectangle color scheme, but the four colors are evenly spaced on the color wheel.



B68D8D



97997B



709FA1



9495B2

Rectangle

The Rectangle color scheme consists of four colors that form a rectangle on the color wheel.



B68D8D



AB937B



709FA1



7B9BB2

Sweetspot

The Sweet Spot groups the original color and five complimentary colors.



B68D8D



EDDDDD



B68DB6



786E6E



F7F7F7



787878

Same Dimension

The Same Dimension uses a secret algorithm to generate beautiful new colors.



B68D8D



EDADAD



B6A28D



5C5353



9C0000



1C0000

Inverse Universe

The Inverse Universe completely reimagines the original color for something new.



8DB6B6



ADEDED



8DA2B6



535C5C



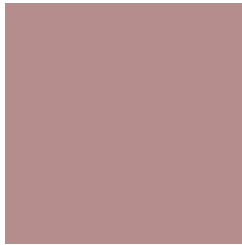
009C9C



001C1C

Previews

White Background



This preview shows how the Hex color B68D8D looks on a white background.

Color Contrast Check

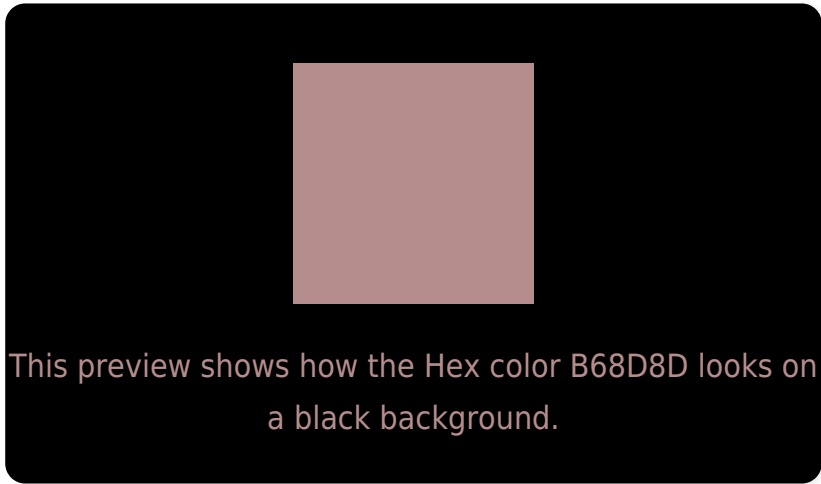
Large Text (above 18pt) WCAG AA × Fail

Any Text WCAG AA × Fail

Large Text (above 18pt) WCAG AAA × Fail

Any Text WCAG AAA × Fail

Black Background



Color Contrast Check

Large Text (above 18pt) WCAG AA ✓ Pass

Any Text WCAG AA ✓ Pass

Large Text (above 18pt) WCAG AAA ✓ Pass

Any Text WCAG AAA ✓ Pass

If you want to check with other color combinations, try the [Color Contrast Checker](#).

Hex B68D8D Background



This preview shows how black text looks on a background with the Hex color B68D8D.

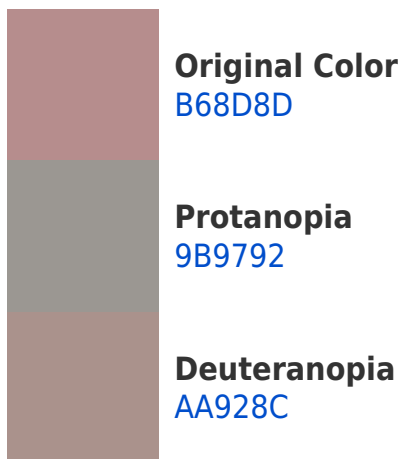


This preview shows how white text looks on a background with the Hex color B68D8D.

Color Blindness Simulation

Color vision deficiency is a very complex topic, and I could not describe the different causes any better than Wikipedia does, so if you want to learn more, you should check out their [article about color blindness](#).

Dichromacy





Tritanopia
B78C96

Trichromacy



Original Color
B68D8D

Protanomaly
A59390

Deuteranomaly
AE908C

Tritanomaly
B78C93

Monochromacy



Original Color
B68D8D

Achromatopsia
999999

Achromatomaly
A49595

CSS Examples

Text

The CSS property to change the color of the text to Hex B68D8D is called "color". The color property can be set on classes, ids or directly on the HTML element.

This example shows how text in the color #B68D8D looks like.

```
.text, #text, p{  
    color:#B68D8D  
}
```

If you want to add a text shadow in that color use the text-shadow property, you can generate a text shadow directly with our [CSS Text Shadow Generator](#).

Here you see how black text with a 4 pixel #B68D8D colored shadow looks like.

```
.shadow{ text-shadow: 4px 4px 2px #B68D8D
}
```

Border

The CSS property to change the border of an element to Hex B68D8D is called "border". The border property can be set on classes, ids or directly on the HTML element.

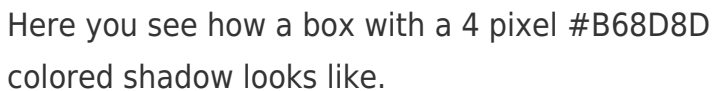
This example shows the color as border, it can be applied via the CSS property "border" or "border-color".

```
.border, #border, table{ border:4px solid
#B68D8D }
```

If only the border color should be changed use the property `border-color`.

```
.border{ border-color:#B68D8D }
```

If you want to add a box shadow in that color use:



Here you see how a box with a 4 pixel #B68D8D colored shadow looks like.

```
.boxshadow{ -moz-box-shadow:4px 4px 4px  
4px #B68D8D; -webkit-box-shadow:4px 4px  
4px 4px #B68D8D; box-shadow:4px 4px 4px  
4px #B68D8D }
```

Background

The CSS property to change the background color of an element to Hex B68D8D is called "background". The background property can be set on classes, ids or directly on the HTML element.

```
.background, #background, body{  
background:#B68D8D }
```

If only the background color should be changed can be used:

```
.background{ background-color:#B68D8D }
```

This example shows the color as background, it is applied via the CSS property "background".

To optimize and compress your CSS code, you can use our [online CSS compressor and optimizer](#) based on csstidy. If you want to create a linear or radial gradient as background or border, check our [CSS Gradient Generator](#).

Hey! You found this booklet interesting? Support Converting Colors with the new Membership Option!

The pro membership hides all ads, plus gives you double the colors in the color bucket, and more awesome pro features!

[Learn more, Memberships starting at \\$2.50/m!](#)

**Follow me
on Twitter!**

@ConvertingColor