

# Converting Colors

Hex(B68F5F)

Have a look what the booklet for  
Hex(B68F5F) contains.

<b>Hex(B68F5F)</b> .....	3
<i><b>Conversions</b></i> .....	4
<i><b>Details</b></i> .....	6
<i><b>Harmonies</b></i> .....	11
<i><b>Previews</b></i> .....	23
<i><b>Color Blindness Simulation</b></i> .....	26
<i><b>CSS Examples</b></i> .....	29

# **Color**

**Hex(B68F5F)**

# Conversions

## Conversions Part 1

Format	Color
Hex	B68F5F
RGB	182, 143, 95
RGB Percent	71%, 56%, 37%
CMY	0.2863, 0.4392, 0.6275
CMYK	0.00, 0.21, 0.48, 0.29
HSL	33°, 37%, 54%
HSV	33°, 48%, 71%
XYZ	31.1794, 30.4162, 15.0541
YIQ	149.1890, 38.6520, -6.6600

# Conversions

## Conversions Part 2

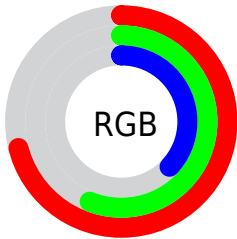
<b>Format</b>	<b>Color</b>
<b>RYB</b>	166, 182, 95
Decimal	11964255
CIELab	62.01, 8.58, 31.09
CIElCh	62, 32.247, 74.571
Yxy	30.4162, 0.4068, 0.3968
Android (android.graphics.Color)	4290154335 (0xFFB68F5F)
YUV	149.1890, -26.7152, 28.7752
Hunter-Lab	55.1509, 4.4004, 22.4218

# Details

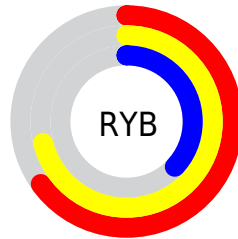
The Hex color **B68F5F** is a dark color, and the websafe version is hex **CC9966**. A complement of this color would be **5F86B6**, and the grayscale version is **959595**.

A 20% lighter version of the original color is **F0C592**, and **7F5D2F** is the 20% darker color. If you saturate the color by 10%, you get **B6874D**, and if you desaturate by 10%, it is **B69771**.

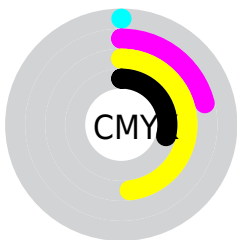
# Distribution



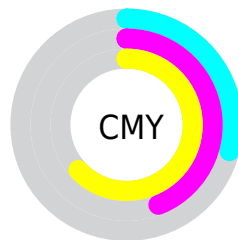
- Red (71%)
- Green (56%)
- Blue (37%)



- Red (65%)
- Yellow (71%)
- Blue (37%)



- Cyan (0%)
- Magenta (21%)
- Yellow (48%)
- Black (29%)



- Cyan (29%)
- Magenta (44%)
- Yellow (63%)

# Brightness & Saturation Gradients

These gradients show how the Hex color B68F5F changes by changing the brightness by 10 percent. The first figure shows a shift by +10% for each color and the second figure -10%.

Similar to the brightness gradients but the following saturation gradients show a change of the Hex color B68F5F by changing the saturation by 10% instead.



 B68F5F

 B68F5F

FFFFFF

 9A7547

 F0C592

 7F5D2F

 FFE1AD

 644519

 FFFDC8

 4B2F00

 FFFFEE

 321A00

 1A0000

 000000

 B68F5F

 B68F5F

 B6874D

 B69771

 B67F3B

 B69F83

 B67728

 B6A796

 B66E16

 B6B0A8

 B66604

 B6B8BA

 B66400

 B6C0CC

 B6C8DE

 B6D0F1

 B6D8FF

# Harmonies

## Analogous

The Analogous color harmony consists of three colors that are next to each other on the color wheel.



C8866F



B68F5F



9B995E

# Triad

The Triadic color harmony groups three colors that are evenly spaced from another and form a triangle on the color wheel.



B68F5F



35A5A3



AB89BF

# Complementary

The Complementary color scheme is a pair of colors which are on the opposite of each other on the color wheel.



B68F5F



5F86B6

# Split Complementary

Split-complementary colors differ from the complementary color scheme. The scheme consists of three colors, the original color and two neighbors of the complement color.



8494CD



B68F5F



2EA3BD

# Square

The Square scheme is like the rectangle color scheme, but the four colors are evenly spaced on the color wheel.



B68F5F



58A486



559DCC



C482A6

# Rectangle

The Rectangle color scheme consists of four colors that form a rectangle on the color wheel.



B68F5F



869E66



559DCC



9F8DC5



# Sweetspot

The Sweet Spot groups the original color and five complimentary colors.



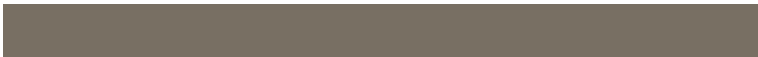
B68F5F



EDDECC



B65F86



786F63



F7F7F7



787878



# Same Dimension

The Same Dimension uses a secret algorithm to generate beautiful new colors.



B68F5F



EDB166



B2B65F



5C5853



9C5600



1C0F00



# Inverse Universe

The Inverse Universe completely reimagines the original color for something new.



5F86B6



66A3ED



635FB6



53575C



00469C

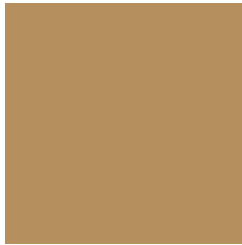


000D1C



# Previews

## White Background



This preview shows how the Hex color B68F5F looks on a white background.

## Color Contrast Check

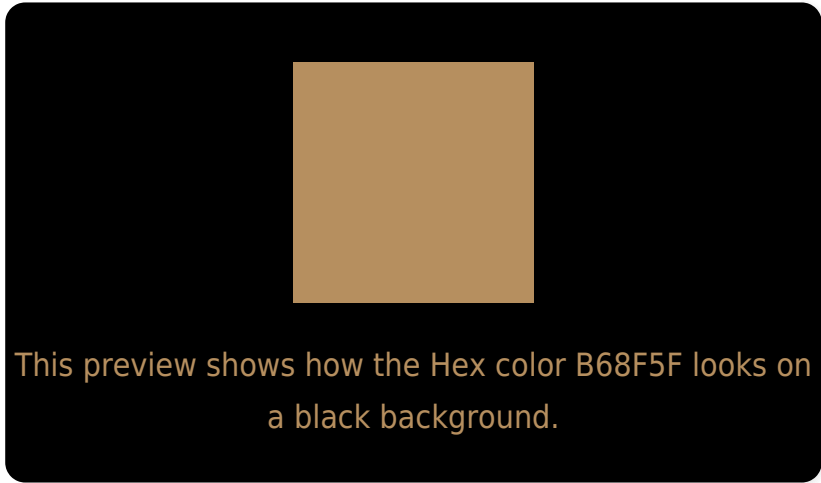
Large Text (above 18pt) WCAG AA × Fail

Any Text WCAG AA × Fail

Large Text (above 18pt) WCAG AAA × Fail

Any Text WCAG AAA × Fail

# Black Background



## Color Contrast Check

Large Text (above 18pt) WCAG AA ✓ Pass

Any Text WCAG AA ✓ Pass

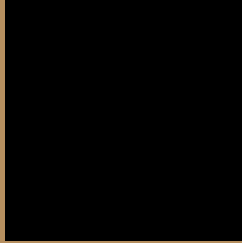
Large Text (above 18pt) WCAG AAA ✓ Pass

Any Text WCAG AAA ✓ Pass

If you want to check with other color combinations, try the [Color Contrast Checker](#).



## Hex B68F5F Background



This preview shows how black text looks on a background with the Hex color B68F5F.



This preview shows how white text looks on a background with the Hex color B68F5F.

# Color Blindness Simulation

Color vision deficiency is a very complex topic, and I could not describe the different causes any better than Wikipedia does, so if you want to learn more, you should check out their [article about color blindness](#).

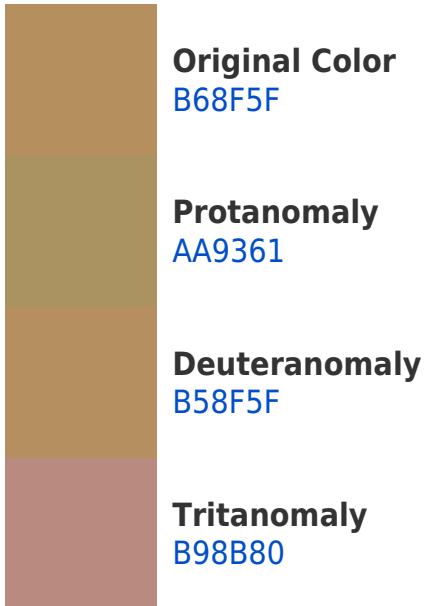
## Dichromacy



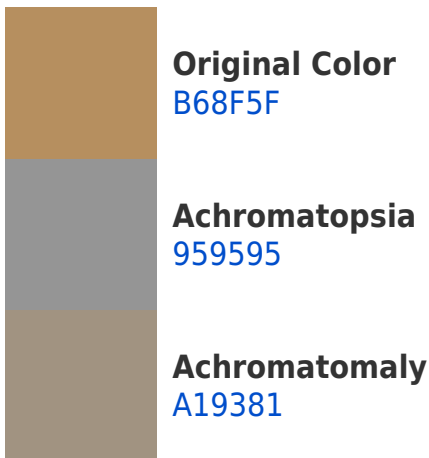


**Tritanopia**  
BB8893

# Trichromacy



# Monochromacy



# CSS Examples

## Text

The CSS property to change the color of the text to Hex B68F5F is called "color". The color property can be set on classes, ids or directly on the HTML element.

This example shows how text in the color #B68F5F looks like.

```
.text, #text, p{  
    color:#B68F5F  
}
```

If you want to add a text shadow in that color use the text-shadow property, you can generate a text shadow directly with our [CSS Text Shadow Generator](#).

Here you see how black text with a 4 pixel #B68F5F colored shadow looks like.

```
.shadow{ text-shadow: 4px 4px 2px #B68F5F  
}
```

## Border

The CSS property to change the border of an element to Hex B68F5F is called "border". The border property can be set on classes, ids or directly on the HTML element.

This example shows the color as border, it can be applied via the CSS property "border" or "border-color".

```
.border, #border, table{ border:4px solid  
#B68F5F }
```

If only the border color should be changed use the property `border-color`.

```
.border{ border-color:#B68F5F }
```

If you want to add a box shadow in that color use:

Here you see how a box with a 4 pixel #B68F5F colored shadow looks like.

```
.boxshadow{ -moz-box-shadow:4px 4px 4px  
4px #B68F5F; -webkit-box-shadow:4px 4px  
4px 4px #B68F5F; box-shadow:4px 4px 4px  
4px #B68F5F }
```

# Background

The CSS property to change the background color of an element to Hex B68F5F is called "background". The background property can be set on classes, ids or directly on the HTML element.

```
.background, #background, body{  
background:#B68F5F }
```

If only the background color should be changed can be used:

```
.background{ background-color:#B68F5F }
```

This example shows the color as background, it is applied via the CSS property "background".

To optimize and compress your CSS code, you can use our [online CSS compressor and optimizer](#) based on csstidy. If you want to create a linear or radial gradient as background or border, check our [CSS Gradient Generator](#).



Hey! You found this booklet interesting? Support Converting Colors with the new Membership Option!

The pro membership hides all ads, plus gives you double the colors in the color bucket, and more awesome pro features!

**[Learn more, Memberships starting at \\$2.50/m!](#)**

**Follow me  
on Twitter!**

@ConvertingColor