

Converting Colors

Hex(B69093)

Have a look what the booklet for
Hex(B69093) contains.

Hex(B69093)	3
<i>Conversions</i>	4
<i>Details</i>	6
<i>Harmonies</i>	11
<i>Previews</i>	23
<i>Color Blindness Simulation</i>	26
<i>CSS Examples</i>	29

Color

Hex(B69093)

Conversions

Conversions Part 1

Format	Color
Hex	B69093
RGB	182, 144, 147
RGB Percent	71%, 56%, 58%
CMY	0.2863, 0.4353, 0.4235
CMYK	0.00, 0.21, 0.19, 0.29
HSL	355°, 21%, 64%
HSV	355°, 21%, 71%
XYZ	34.5311, 31.9982, 31.9600
YIQ	155.7040, 21.6850, 8.9890

Conversions

Conversions Part 2

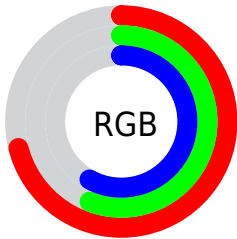
Format	Color
RYB	182, 144, 147
Decimal	11964563
CIELab	63.34, 14.79, 3.88
CIELCh	63, 15.286, 14.700
Yxy	31.9982, 0.3506, 0.3249
Android (android.graphics.Color)	4290154643 (0xFFB69093)
YUV	155.7040, -4.2911, 23.0616
Hunter-Lab	56.5669, 9.9727, 6.0983

Details

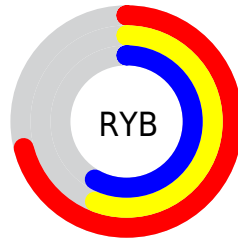
The Hex color **B69093** is a light color, and the websafe version is hex **CC9999**. A complement of this color would be **90B6B3**, and the grayscale version is **9C9C9C**.

A 20% lighter version of the original color is **EEC6C9**, and **805D61** is the 20% darker color. If you saturate the color by 10%, you get **B67E82**, and if you desaturate by 10%, it is **B6A2A4**.

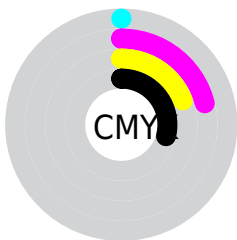
Distribution



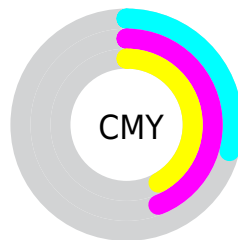
- Red (71%)
- Green (56%)
- Blue (58%)



- Red (71%)
- Yellow (56%)
- Blue (58%)



- Cyan (0%)
- Magenta (21%)
- Yellow (19%)
- Black (29%)



- Cyan (29%)
- Magenta (44%)
- Yellow (42%)

Brightness & Saturation Gradients

These gradients show how the Hex color B69093 changes by changing the brightness by 10 percent. The first figure shows a shift by +10% for each color and the second figure -10%.

Similar to the brightness gradients but the following saturation gradients show a change of the Hex color B69093 by changing the saturation by 10% instead.

 B69093

 B69093

FFFFFF

 9B7679

 EEC6C9

 805D61

 FFE2E5


 674649

 4E2F32

 371A1D

 230003

 000000

 B69093

 B69093

 B67E82

 B6A2A4

 B66C71

 B6B4B5

 B65961

 B6C7C5

 B64750

 B6D9D6

 B6353F

 B6EBE7

 B6232E

 B6FDF8

 B6111E

 B6FFFF

 B6000E

Harmonies

Analogous

The Analogous color harmony consists of three colors that are next to each other on the color wheel.



B191A1



B69093



B49287

Triad

The Triadic color harmony groups three colors that are evenly spaced from another and form a triangle on the color wheel.



B69093



8D9E86



829DB3

Complementary

The Complementary color scheme is a pair of colors which are on the opposite of each other on the color wheel.



B69093



90B6B3

Split Complementary

Split-complementary colors differ from the complementary color scheme. The scheme consists of three colors, the original color and two neighbors of the complement color.



77A0AC



B69093



7FA192

Square

The Square scheme is like the rectangle color scheme, but the four colors are evenly spaced on the color wheel.



B69093



9D9B7F



76A1A0



9398B3

Rectangle

The Rectangle color scheme consists of four colors that form a rectangle on the color wheel.



B69093



AE9581



76A1A0



7D9EB1

Sweetspot

The Sweet Spot groups the original color and five complimentary colors.



B69093



EDDFE0



B390B6



786F70



F7F7F7



787878

Same Dimension

The Same Dimension uses a secret algorithm to generate beautiful new colors.



B69093



EDB2B7



B6A090



5C5353



9C000C



1C0002

Inverse Universe

The Inverse Universe completely reimagines the original color for something new.



B69093



EDB2B7



90A6B6



5C5353



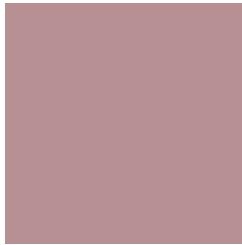
9C000C



1C0002

Previews

White Background



This preview shows how the Hex color B69093 looks on a white background.

Color Contrast Check

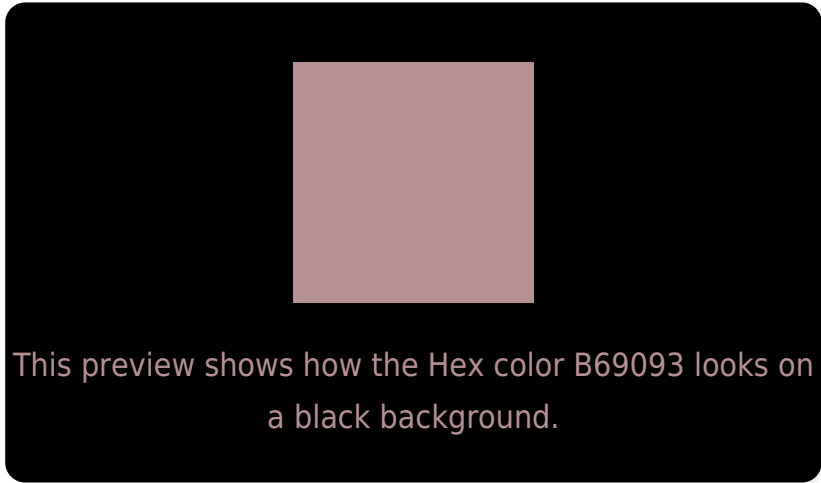
Large Text (above 18pt) WCAG AA × Fail

Any Text WCAG AA × Fail

Large Text (above 18pt) WCAG AAA × Fail

Any Text WCAG AAA × Fail

Black Background



Color Contrast Check

Large Text (above 18pt) WCAG AA ✓ Pass

Any Text WCAG AA ✓ Pass

Large Text (above 18pt) WCAG AAA ✓ Pass

Any Text WCAG AAA ✓ Pass

If you want to check with other color combinations, try the [Color Contrast Checker](#).

Hex B69093 Background



This preview shows how black text looks on a background with the Hex color B69093.

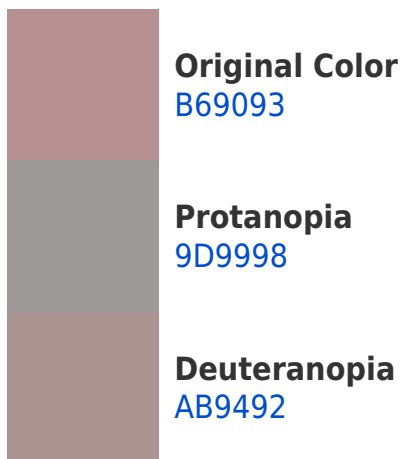


This preview shows how white text looks on a background with the Hex color B69093.

Color Blindness Simulation

Color vision deficiency is a very complex topic, and I could not describe the different causes any better than Wikipedia does, so if you want to learn more, you should check out their [article about color blindness](#).

Dichromacy





Tritanopia
B78F9A

Trichromacy



Original Color
B69093

Protanomaly
A69696

Deuteranomaly
AF9392

Tritanomaly
B78F97

Monochromacy



Original Color
B69093

Achromatopsia
9C9C9C

Achromatomaly
A59899

CSS Examples

Text

The CSS property to change the color of the text to Hex B69093 is called "color". The color property can be set on classes, ids or directly on the HTML element.

This example shows how text in the color #B69093 looks like.

```
.text, #text, p{  
    color:#B69093  
}
```

If you want to add a text shadow in that color use the text-shadow property, you can generate a text shadow directly with our [CSS Text Shadow Generator](#).

Here you see how black text with a 4 pixel #B69093 colored shadow looks like.

```
.shadow{ text-shadow: 4px 4px 2px #B69093
}
```

Border

The CSS property to change the border of an element to Hex B69093 is called "border". The border property can be set on classes, ids or directly on the HTML element.

This example shows the color as border, it can be applied via the CSS property "border" or "border-color".

```
.border, #border, table{ border:4px solid
#B69093 }
```

If only the border color should be changed use the property `border-color`.

```
.border{ border-color:#B69093 }
```

If you want to add a box shadow in that color use:

Here you see how a box with a 4 pixel #B69093 colored shadow looks like.

```
.boxshadow{ -moz-box-shadow:4px 4px 4px  
4px #B69093; -webkit-box-shadow:4px 4px  
4px 4px #B69093; box-shadow:4px 4px 4px  
4px #B69093 }
```

Background

The CSS property to change the background color of an element to Hex B69093 is called "background". The background property can be set on classes, ids or directly on the HTML element.

```
.background, #background, body{  
background:#B69093 }
```

If only the background color should be changed can be used:

```
.background{ background-color:#B69093 }
```

This example shows the color as background, it is applied via the CSS property "background".

To optimize and compress your CSS code, you can use our [online CSS compressor and optimizer](#) based on csstidy. If you want to create a linear or radial gradient as background or border, check our [CSS Gradient Generator](#).

Hey! You found this booklet interesting? Support Converting Colors with the new Membership Option!

The pro membership hides all ads, plus gives you double the colors in the color bucket, and more awesome pro features!

[Learn more, Memberships starting at \\$2.50/m!](#)

**Follow me
on Twitter!**

@ConvertingColor