

Converting Colors

Hex(B69165)

Have a look what the booklet for
Hex(B69165) contains.

Hex(B69165)	3
<i>Conversions</i>	4
<i>Details</i>	6
<i>Harmonies</i>	11
<i>Previews</i>	23
<i>Color Blindness Simulation</i>	26
<i>CSS Examples</i>	29

Color

Hex(B69165)

Conversions

Conversions Part 1

Format	Color
Hex	B69165
RGB	182, 145, 101
RGB Percent	71%, 57%, 40%
CMY	0.2863, 0.4314, 0.6039
CMYK	0.00, 0.20, 0.45, 0.29
HSL	33°, 36%, 55%
HSV	33°, 45%, 71%
XYZ	31.7658, 31.1355, 16.6474
YIQ	151.0470, 36.1760, -5.8400

Conversions

Conversions Part 2

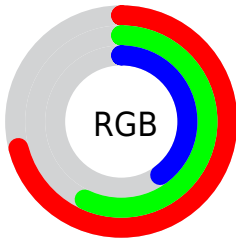
Format	Color
RYB	169, 182, 101
Decimal	11964773
CIELab	62.62, 8.10, 28.61
CIELCh	63, 29.734, 74.197
Yxy	31.1355, 0.3993, 0.3914
Android (android.graphics.Color)	4290154853 (0xFFB69165)
YUV	151.0470, -24.6732, 27.1458
Hunter-Lab	55.7992, 3.9693, 21.3705

Details

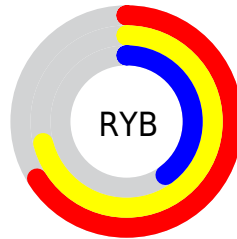
The Hex color **B69165** is a dark color, and the websafe version is hex **CC9966**. A complement of this color would be **658AB6**, and the grayscale version is **979797**.

A 20% lighter version of the original color is **EFC798**, and **7F5F35** is the 20% darker color. If you saturate the color by 10%, you get **B68953**, and if you desaturate by 10%, it is **B69977**.

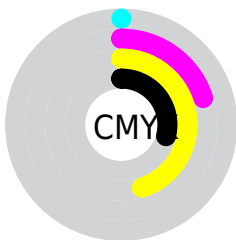
Distribution



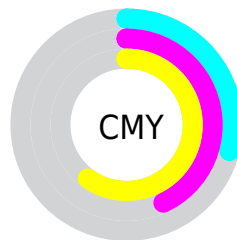
- Red (71%)
- Green (57%)
- Blue (40%)



- Red (66%)
- Yellow (71%)
- Blue (40%)



- Cyan (0%)
- Magenta (20%)
- Yellow (45%)
- Black (29%)




- Cyan (29%)
- Magenta (43%)
- Yellow (60%)

Brightness & Saturation Gradients

These gradients show how the Hex color B69165 changes by changing the brightness by 10 percent. The first figure shows a shift by +10% for each color and the second figure -10%.

Similar to the brightness gradients but the following saturation gradients show a change of the Hex color B69165 by changing the saturation by 10% instead.

 B69165

 B69165

FFFFFF

 9A774D

 EFC798

 7F5F35

 FFE3B3

 65471F

 FFFFCF

 4B3108

 FFFFEB

 331C00

 1B0300

 000000

 B69165

 B69165

 B68953

 B69977

 B68041

 B6A289

 B6782E

 B6AA9C

 B6701C

 B6B2AE

 B6670A

 B6BBC0

 B66300

 B6C3D2

 B6CBE4

 B6D4F7

 B6DCFF

Harmonies

Analogous

The Analogous color harmony consists of three colors that are next to each other on the color wheel.



C78974



B69165



9D9A64

Triad

The Triadic color harmony groups three colors that are evenly spaced from another and form a triangle on the color wheel.



B69165



44A6A3



AB8CBD

Complementary

The Complementary color scheme is a pair of colors which are on the opposite of each other on the color wheel.



B69165



658AB6

Split Complementary

Split-complementary colors differ from the complementary color scheme. The scheme consists of three colors, the original color and two neighbors of the complement color.



8796CA



B69165



40A4BB

Square

The Square scheme is like the rectangle color scheme, but the four colors are evenly spaced on the color wheel.



B69165



60A588



5E9ECA



C385A7

Rectangle

The Rectangle color scheme consists of four colors that form a rectangle on the color wheel.



B69165



8A9F6B



5E9ECA



A08FC3

Sweetspot

The Sweet Spot groups the original color and five complimentary colors.



B69165



EDDFCE



B6658B



786F65



F7F7F7



787878

Same Dimension

The Same Dimension uses a secret algorithm to generate beautiful new colors.



B69165



EDB46F



B3B665



5C5853



9C5400



1C0F00

Inverse Universe

The Inverse Universe completely reimagines the original color for something new.



658AB6



6FA9ED



6865B6



53575C



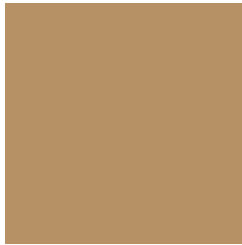
00479C



000D1C

Previews

White Background



This preview shows how the Hex color B69165 looks on a white background.

Color Contrast Check

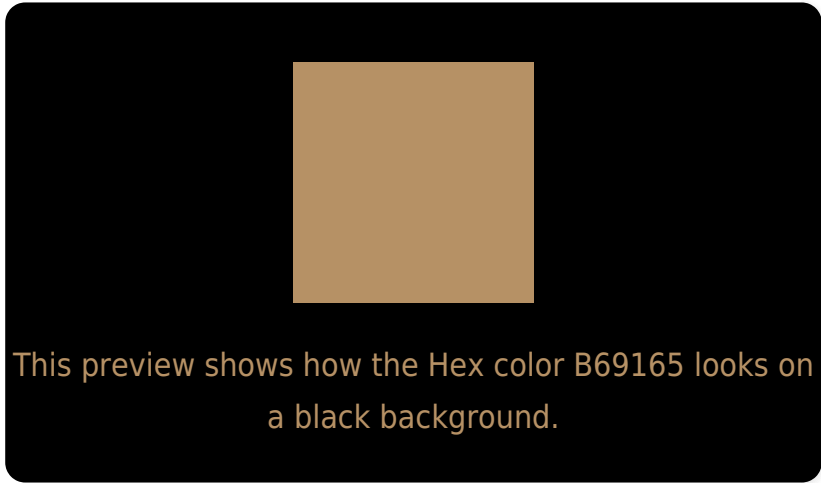
Large Text (above 18pt) WCAG AA × Fail

Any Text WCAG AA × Fail

Large Text (above 18pt) WCAG AAA × Fail

Any Text WCAG AAA × Fail

Black Background



Color Contrast Check

Large Text (above 18pt) WCAG AA ✓ Pass

Any Text WCAG AA ✓ Pass

Large Text (above 18pt) WCAG AAA ✓ Pass

Any Text WCAG AAA ✓ Pass

If you want to check with other color combinations, try the [Color Contrast Checker](#).

Hex B69165 Background



This preview shows how black text looks on a background with the Hex color B69165.



This preview shows how white text looks on a background with the Hex color B69165.

Color Blindness Simulation

Color vision deficiency is a very complex topic, and I could not describe the different causes any better than Wikipedia does, so if you want to learn more, you should check out their [article about color blindness](#).

Dichromacy



Original Color
B69165

Protanopia
A49868

Deuteranopia
B69165

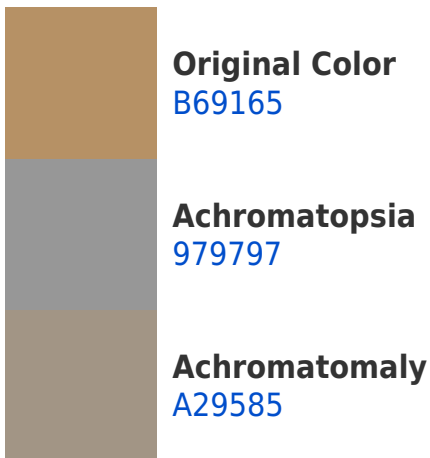


Tritanopia
BB8B95

Trichromacy



Monochromacy



CSS Examples

Text

The CSS property to change the color of the text to Hex B69165 is called "color". The color property can be set on classes, ids or directly on the HTML element.

This example shows how text in the color #B69165 looks like.

```
.text, #text, p{  
    color:#B69165  
}
```

If you want to add a text shadow in that color use the text-shadow property, you can generate a text shadow directly with our [CSS Text Shadow Generator](#).

Here you see how black text with a 4 pixel #B69165 colored shadow looks like.

```
.shadow{ text-shadow: 4px 4px 2px #B69165
}
```

Border

The CSS property to change the border of an element to Hex B69165 is called "border". The border property can be set on classes, ids or directly on the HTML element.

This example shows the color as border, it can be applied via the CSS property "border" or "border-color".

```
.border, #border, table{ border:4px solid
#B69165 }
```

If only the border color should be changed use the property `border-color`.

```
.border{ border-color:#B69165 }
```

If you want to add a box shadow in that color use:

Here you see how a box with a 4 pixel #B69165 colored shadow looks like.

```
.boxshadow{ -moz-box-shadow:4px 4px 4px  
4px #B69165; -webkit-box-shadow:4px 4px  
4px 4px #B69165; box-shadow:4px 4px 4px  
4px #B69165 }
```

Background

The CSS property to change the background color of an element to Hex B69165 is called "background". The background property can be set on classes, ids or directly on the HTML element.

```
.background, #background, body{  
background:#B69165 }
```

If only the background color should be changed can be used:

```
.background{ background-color:#B69165 }
```

This example shows the color as background, it is applied via the CSS property "background".

To optimize and compress your CSS code, you can use our [online CSS compressor and optimizer](#) based on csstidy. If you want to create a linear or radial gradient as background or border, check our [CSS Gradient Generator](#).

Hey! You found this booklet interesting? Support Converting Colors with the new Membership Option!

The pro membership hides all ads, plus gives you double the colors in the color bucket, and more awesome pro features!

[Learn more, Memberships starting at \\$2.50/m!](#)

**Follow me
on Twitter!**

@ConvertingColor