

# Converting Colors

Hex(B6918F)

Have a look what the booklet for  
Hex(B6918F) contains.

<b>Hex(B6918F)</b> .....	3
<i><b>Conversions</b></i> .....	4
<i><b>Details</b></i> .....	6
<i><b>Harmonies</b></i> .....	11
<i><b>Previews</b></i> .....	23
<i><b>Color Blindness Simulation</b></i> .....	26
<i><b>CSS Examples</b></i> .....	29

# **Color**

**Hex(B6918F)**

# Conversions

## Conversions Part 1

<b>Format</b>	<b>Color</b>
Hex	B6918F
RGB	182, 145, 143
RGB Percent	71%, 57%, 56%
CMY	0.2863, 0.4314, 0.4392
CMYK	0.00, 0.20, 0.21, 0.29
HSL	3°, 21%, 64%
HSV	3°, 21%, 71%
XYZ	34.3747, 32.1791, 30.3860
YIQ	155.8350, 22.6940, 7.2220

# Conversions

## Conversions Part 2

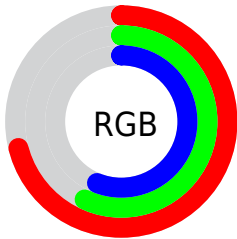
<b>Format</b>	<b>Color</b>
<b>R<sub>YB</sub></b>	182, 145, 143
Decimal	11964815
CIE Lab	63.49, 13.60, 6.36
CIE LCh	63, 15.015, 25.040
Yxy	32.1791, 0.3546, 0.3319
Android (android.graphics.Color)	4290154895 (0xFFB6918F)
YUV	155.8350, -6.3277, 22.9467
Hunter-Lab	56.7266, 8.8945, 7.9495

# Details

The Hex color **B6918F** is a light color, and the websafe version is hex **CC9999**. A complement of this color would be **8FB4B6**, and the grayscale version is **9C9C9C**.

A 20% lighter version of the original color is **EEC7C5**, and **805E5D** is the 20% darker color. If you saturate the color by 10%, you get **B6807D**, and if you desaturate by 10%, it is **B6A2A1**.

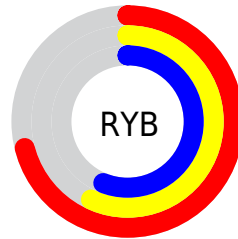
# Distribution



Red (71%)

Green (57%)

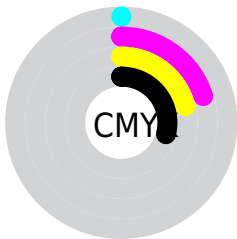
Blue (56%)



Red (71%)

Yellow (57%)

Blue (56%)

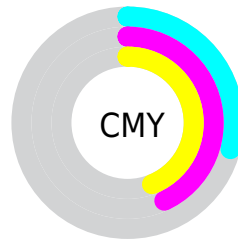


Cyan (0%)

Magenta (20%)

Yellow (21%)

Black (29%)



Cyan (29%)

Magenta (43%)

Yellow (44%)

# Brightness & Saturation Gradients

These gradients show how the Hex color B6918F changes by changing the brightness by 10 percent. The first figure shows a shift by +10% for each color and the second figure -10%.

Similar to the brightness gradients but the following saturation gradients show a change of the Hex color B6918F by changing the saturation by 10% instead.





B6918F



B6918F

FFFFFF



9B7775



EEC7C5



805E5D



FFE3E1



674745

FFFFFFD



4E302F



361B1A



230200



000000



B6918F



B6918F



B6807D



B6A2A1

 B66E6B

 B6B4B3

 B65D58

 B6C5C6

 B64C46

 B6D6D8

 B63B34

 B6E7EA

 B62922

 B6F9FC

 B61810

 B6FFFF

 B60900

# Harmonies

## Analogous

The Analogous color harmony consists of three colors that are next to each other on the color wheel.



B3919C



B6918F



B19484

# Triad

The Triadic color harmony groups three colors that are evenly spaced from another and form a triangle on the color wheel.



B6918F



89A08A



889CB4

# Complementary

The Complementary color scheme is a pair of colors which are on the opposite of each other on the color wheel.



B6918F



8FB4B6

# Split Complementary

Split-complementary colors differ from the complementary color scheme. The scheme consists of three colors, the original color and two neighbors of the complement color.



7B9FAF



B6918F



7CA197

# Square

The Square scheme is like the rectangle color scheme, but the four colors are evenly spaced on the color wheel.



B6918F



989C81



77A1A4



9997B2

# Rectangle

The Rectangle color scheme consists of four colors that form a rectangle on the color wheel.



B6918F



AB9780



77A1A4



839DB3

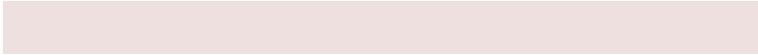


# Sweetspot

The Sweet Spot groups the original color and five complimentary colors.



B6918F



EDE0DF



B68FB4



78706F



F7F7F7



787878



# Same Dimension

The Same Dimension uses a secret algorithm to generate beautiful new colors.



B6918F



EDB3AF



B6A48F



5C5353



9C0800



1C0100



# Inverse Universe

The Inverse Universe completely reimagines the original color for something new.



8FB4B6



AFEAED



8FA1B6



535B5C



00949C

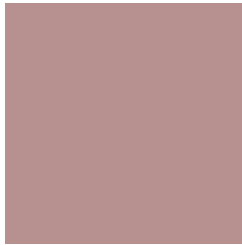


001B1C



# Previews

## White Background



This preview shows how the Hex color B6918F looks on a white background.

## Color Contrast Check

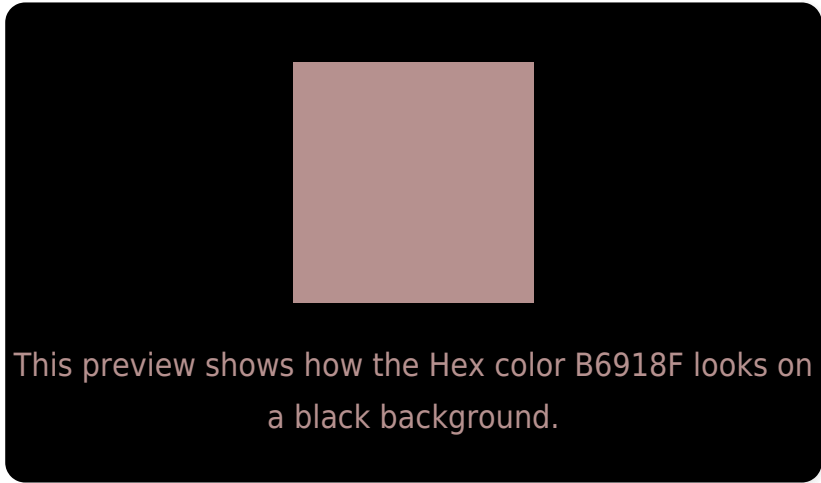
Large Text (above 18pt) WCAG AA × Fail

Any Text WCAG AA × Fail

Large Text (above 18pt) WCAG AAA × Fail

Any Text WCAG AAA × Fail

# Black Background



## Color Contrast Check

Large Text (above 18pt) WCAG AA ✓ Pass

Any Text WCAG AA ✓ Pass

Large Text (above 18pt) WCAG AAA ✓ Pass

Any Text WCAG AAA ✓ Pass

If you want to check with other color combinations, try the [Color Contrast Checker](#).



## Hex B6918F Background



This preview shows how black text looks on a background with the Hex color B6918F.



This preview shows how white text looks on a background with the Hex color B6918F.

# Color Blindness Simulation

Color vision deficiency is a very complex topic, and I could not describe the different causes any better than Wikipedia does, so if you want to learn more, you should check out their [article about color blindness](#).

## Dichromacy



**Original Color**  
B6918F

**Protanopia**  
9E9994

**Deuteranopia**  
AD958E



**Tritanopia**  
B78F9A

# Trichromacy



**Original Color**  
B6918F

**Protanomaly**  
A79692

**Deuteranomaly**  
B0948E

**Tritanomaly**  
B79096

# Monochromacy



**Original Color**  
B6918F

**Achromatopsia**  
9C9C9C

**Achromatomaly**  
A59897

# CSS Examples

## Text

The CSS property to change the color of the text to Hex B6918F is called "color". The color property can be set on classes, ids or directly on the HTML element.

This example shows how text in the color #B6918F looks like.

```
.text, #text, p{  
    color:#B6918F  
}
```

If you want to add a text shadow in that color use the text-shadow property, you can generate a text shadow directly with our [CSS Text Shadow Generator](#).

Here you see how black text with a 4 pixel #B6918F colored shadow looks like.

```
.shadow{ text-shadow: 4px 4px 2px #B6918F
}
```

## Border

The CSS property to change the border of an element to Hex B6918F is called "border". The border property can be set on classes, ids or directly on the HTML element.

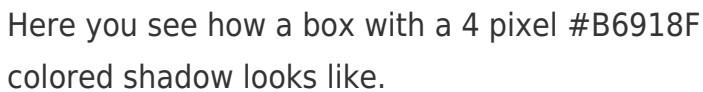
This example shows the color as border, it can be applied via the CSS property "border" or "border-color".

```
.border, #border, table{ border:4px solid
#B6918F }
```

If only the border color should be changed use the property `border-color`.

```
.border{ border-color:#B6918F }
```

If you want to add a box shadow in that color use:



Here you see how a box with a 4 pixel #B6918F colored shadow looks like.

```
.boxshadow{ -moz-box-shadow:4px 4px 4px  
4px #B6918F; -webkit-box-shadow:4px 4px  
4px 4px #B6918F; box-shadow:4px 4px 4px  
4px #B6918F }
```

# Background

The CSS property to change the background color of an element to Hex B6918F is called "background". The background property can be set on classes, ids or directly on the HTML element.

```
.background, #background, body{  
background:#B6918F }
```

If only the background color should be changed can be used:

```
.background{ background-color:#B6918F }
```

This example shows the color as background, it is applied via the CSS property "background".

To optimize and compress your CSS code, you can use our [online CSS compressor and optimizer](#) based on csstidy. If you want to create a linear or radial gradient as background or border, check our [CSS Gradient Generator](#).



Hey! You found this booklet interesting? Support Converting Colors with the new Membership Option!

The pro membership hides all ads, plus gives you double the colors in the color bucket, and more awesome pro features!

**[Learn more, Memberships starting at \\$2.50/m!](#)**

**Follow me  
on Twitter!**

@ConvertingColor