

Converting Colors

Hex(B6989E)

Have a look what the booklet for
Hex(B6989E) contains.

Hex(B6989E)	3
<i>Conversions</i>	4
<i>Details</i>	6
<i>Harmonies</i>	11
<i>Previews</i>	23
<i>Color Blindness Simulation</i>	26
<i>CSS Examples</i>	29

Color

Hex(B6989E)

Conversions

Conversions Part 1

Format	Color
Hex	B6989E
RGB	182, 152, 158
RGB Percent	71%, 60%, 62%
CMY	0.2863, 0.4039, 0.3804
CMYK	0.00, 0.16, 0.13, 0.29
HSL	348°, 17%, 65%
HSV	348°, 16%, 71%
XYZ	36.6912, 34.8702, 37.1445
YIQ	161.6540, 15.9540, 8.2260

Conversions

Conversions Part 2

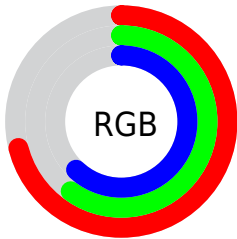
Format	Color
RYB	182, 152, 158
Decimal	11966622
CIELab	65.65, 12.14, 1.02
CIELCh	66, 12.179, 4.827
Yxy	34.8702, 0.3375, 0.3208
Android (android.graphics.Color)	4290156702 (0xFFB6989E)
YUV	161.6540, -1.8014, 17.8434
Hunter-Lab	59.0510, 7.5714, 4.0408

Details

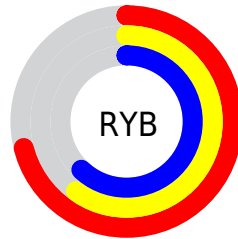
The Hex color **B6989E** is a light color, and the websafe version is hex **CC9999**. A complement of this color would be **98B6B0**, and the grayscale version is **A2A2A2**.

A 20% lighter version of the original color is **EECED5**, and **81656B** is the 20% darker color. If you saturate the color by 10%, you get **B6868F**, and if you desaturate by 10%, it is **B6AAAD**.

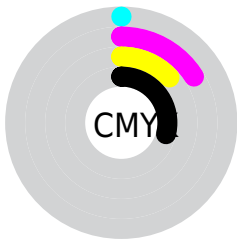
Distribution



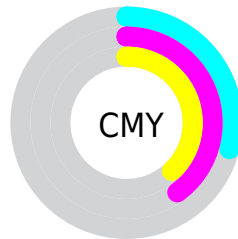
- Red (71%)
- Green (60%)
- Blue (62%)



- Red (71%)
- Yellow (60%)
- Blue (62%)



- Cyan (0%)
- Magenta (16%)
- Yellow (13%)
- Black (29%)



- Cyan (29%)
- Magenta (40%)
- Yellow (38%)

Brightness & Saturation Gradients

These gradients show how the Hex color B6989E changes by changing the brightness by 10 percent. The first figure shows a shift by +10% for each color and the second figure -10%.

Similar to the brightness gradients but the following saturation gradients show a change of the Hex color B6989E by changing the saturation by 10% instead.

 B6989E

 B6989E

FFFFFF

 9B7E84

 EECED5

 81656B

 FFEBF1


 674D53

 4F363C

 382026

 220B11

 000000

 B6989E

 B6989E

 B6868F

 B6AAAD

 B67481

 B6BCBB

 B66172

 B6CFCA

 B64F64

 B6E1D8

 B63D55

 B6F3E7

 B62B47

 B6FFF5

 B61938

 B6FFFF

 B6062A

 B60024

Harmonies

Analogous

The Analogous color harmony consists of three colors that are next to each other on the color wheel.



AF99A9



B6989E



B69993

Triad

The Triadic color harmony groups three colors that are evenly spaced from another and form a triangle on the color wheel.



B6989E



9AA38D



8AA3B3

Complementary

The Complementary color scheme is a pair of colors which are on the opposite of each other on the color wheel.



B6989E



98B6B0

Split Complementary

Split-complementary colors differ from the complementary color scheme. The scheme consists of three colors, the original color and two neighbors of the complement color.



84A5AB



B6989E



8EA596

Square

The Square scheme is like the rectangle color scheme, but the four colors are evenly spaced on the color wheel.



B6989E



A79F8A



86A6A1



96A0B5

Rectangle

The Rectangle color scheme consists of four colors that form a rectangle on the color wheel.



B6989E



B39B8E



86A6A1



87A4B1

Sweetspot

The Sweet Spot groups the original color and five complimentary colors.



B6989E



EDE1E4



B098B6



787172



F7F7F7



787878

Same Dimension

The Same Dimension uses a secret algorithm to generate beautiful new colors.



B6989E



EDBEC7



B6A198



5C5354



9C001F



1C0006

Inverse Universe

The Inverse Universe completely reimagines the original color for something new.



B6989E



EDBEC7



98ADB6



5C5354



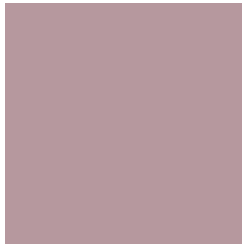
9C001F



1C0006

Previews

White Background



This preview shows how the Hex color B6989E looks on a white background.

Color Contrast Check

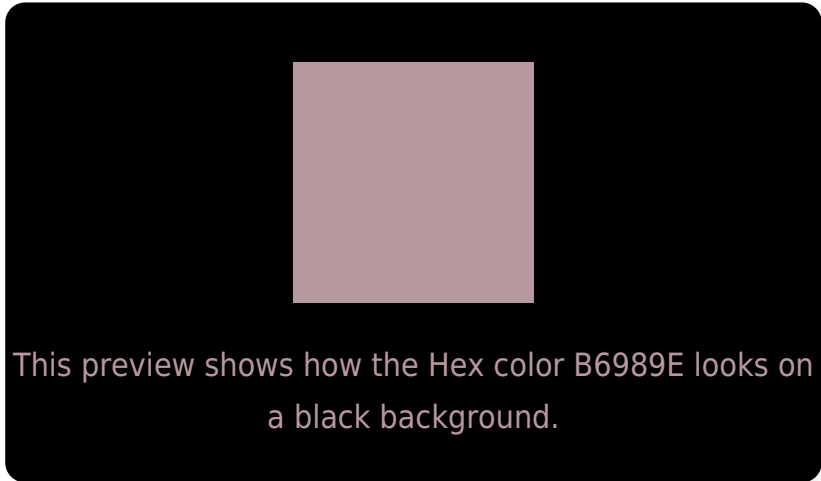
Large Text (above 18pt) WCAG AA × Fail

Any Text WCAG AA × Fail

Large Text (above 18pt) WCAG AAA × Fail

Any Text WCAG AAA × Fail

Black Background



Color Contrast Check

Large Text (above 18pt) WCAG AA ✓ Pass

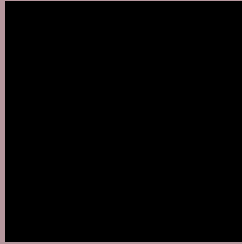
Any Text WCAG AA ✓ Pass

Large Text (above 18pt) WCAG AAA ✓ Pass

Any Text WCAG AAA ✓ Pass

If you want to check with other color combinations, try the [Color Contrast Checker](#).

Hex B6989E Background



This preview shows how black text looks on a background with the Hex color B6989E.



This preview shows how white text looks on a background with the Hex color B6989E.

Color Blindness Simulation

Color vision deficiency is a very complex topic, and I could not describe the different causes any better than Wikipedia does, so if you want to learn more, you should check out their [article about color blindness](#).

Dichromacy





Tritanopia
B797A3

Trichromacy



Original Color
B6989E

Protanomaly
A99CA1

Deuteranomaly
B2999E

Tritanomaly
B797A1

Monochromacy



Original Color
B6989E

Achromatopsia
A2A2A2

Achromatomaly
A99EA1

CSS Examples

Text

The CSS property to change the color of the text to Hex B6989E is called "color". The color property can be set on classes, ids or directly on the HTML element.

This example shows how text in the color #B6989E looks like.

```
.text, #text, p{  
    color:#B6989E  
}
```

If you want to add a text shadow in that color use the text-shadow property, you can generate a text shadow directly with our [CSS Text Shadow Generator](#).

Here you see how black text with a 4 pixel #B6989E colored shadow looks like.

```
.shadow{ text-shadow: 4px 4px 2px #B6989E
}
```

Border

The CSS property to change the border of an element to Hex B6989E is called "border". The border property can be set on classes, ids or directly on the HTML element.

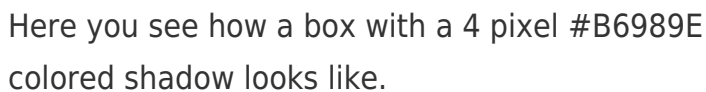
This example shows the color as border, it can be applied via the CSS property "border" or "border-color".

```
.border, #border, table{ border:4px solid
#B6989E }
```

If only the border color should be changed use the property `border-color`.

```
.border{ border-color:#B6989E }
```

If you want to add a box shadow in that color use:



Here you see how a box with a 4 pixel #B6989E colored shadow looks like.

```
.boxshadow{ -moz-box-shadow:4px 4px 4px  
4px #B6989E; -webkit-box-shadow:4px 4px  
4px 4px #B6989E; box-shadow:4px 4px 4px  
4px #B6989E }
```

Background

The CSS property to change the background color of an element to Hex B6989E is called "background". The background property can be set on classes, ids or directly on the HTML element.

```
.background, #background, body{  
background:#B6989E }
```

If only the background color should be changed can be used:

```
.background{ background-color:#B6989E }
```

This example shows the color as background, it is applied via the CSS property "background".

To optimize and compress your CSS code, you can use our [online CSS compressor and optimizer](#) based on csstidy. If you want to create a linear or radial gradient as background or border, check our [CSS Gradient Generator](#).

Hey! You found this booklet interesting? Support Converting Colors with the new Membership Option!

The pro membership hides all ads, plus gives you double the colors in the color bucket, and more awesome pro features!

[Learn more, Memberships starting at \\$2.50/m!](#)

**Follow me
on Twitter!**

@ConvertingColor