

Converting Colors

Hex(B69CA5)

Have a look what the booklet for
Hex(B69CA5) contains.

Hex(B69CA5)	3
<i>Conversions</i>	4
<i>Details</i>	6
<i>Harmonies</i>	11
<i>Previews</i>	23
<i>Color Blindness Simulation</i>	26
<i>CSS Examples</i>	29

Color

Hex(B69CA5)

Conversions

Conversions Part 1

Format	Color
Hex	B69CA5
RGB	182, 156, 165
RGB Percent	71%, 61%, 65%
CMY	0.2863, 0.3882, 0.3529
CMYK	0.00, 0.14, 0.09, 0.29
HSL	339°, 15%, 66%
HSV	339°, 14%, 71%
XYZ	37.9714, 36.4386, 40.6294
YIQ	164.8000, 12.6070, 8.3110

Conversions

Conversions Part 2

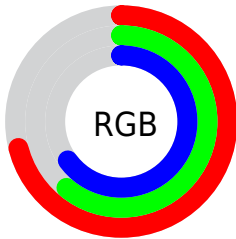
Format	Color
R_{YB}	182, 156, 165
Decimal	11967653
CIE _{Lab}	66.85, 11.12, -1.14
CIE _{LCh}	67, 11.180, 354.169
Yxy	36.4386, 0.3301, 0.3167
Android (android.graphics.Color)	4290157733 (0xFFB69CA5)
YUV	164.8000, 0.0986, 15.0844
Hunter-Lab	60.3644, 6.6452, 2.3489

Details

The Hex color **B69CA5** is a light color, and the websafe version is hex **CC9999**. A complement of this color would be **9CB6AD**, and the grayscale version is **A5A5A5**.

A 20% lighter version of the original color is **EED3DC**, and **816971** is the 20% darker color. If you saturate the color by 10%, you get **B68A99**, and if you desaturate by 10%, it is **B6AEB1**.

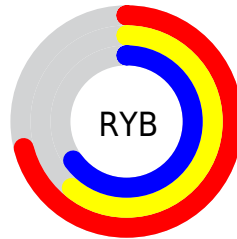
Distribution



Red (71%)

Green (61%)

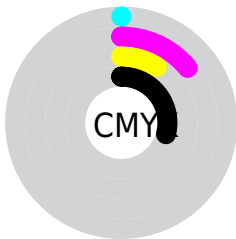
Blue (65%)



Red (71%)

Yellow (61%)

Blue (65%)

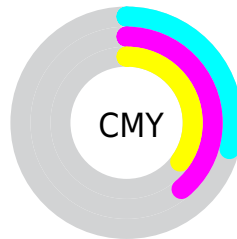


Cyan (0%)

Magenta (14%)

Yellow (9%)

Black (29%)



Cyan (29%)

Magenta (39%)

Yellow (35%)

Brightness & Saturation Gradients

These gradients show how the Hex color B69CA5 changes by changing the brightness by 10 percent. The first figure shows a shift by +10% for each color and the second figure -10%.

Similar to the brightness gradients but the following saturation gradients show a change of the Hex color B69CA5 by changing the saturation by 10% instead.



B69CA5



B69CA5

FFFFFF



9B828B



EED3DC



816971



FFEFF8



685159



4F3A41



38242B



220F17



000000



B69CA5



B69CA5



B68A99



B6AEB1

 B6788D

 B6C0BD

 B66581

 B6D3C9

 B65375

 B6E5D5

 B6416A

 B6F7E0

 B62F5E

 B6FFEC

 B61D52

 B6FFF8

 B60A46

 B6FFFF

 B6003F

Harmonies

Analogous

The Analogous color harmony consists of three colors that are next to each other on the color wheel.



AE9EAF



B69CA5



B89C9B

Triad

The Triadic color harmony groups three colors that are evenly spaced from another and form a triangle on the color wheel.



B69CA5



A2A590



8CA7B3

Complementary

The Complementary color scheme is a pair of colors which are on the opposite of each other on the color wheel.



B69CA5



9CB6AD

Split Complementary

Split-complementary colors differ from the complementary color scheme. The scheme consists of three colors, the original color and two neighbors of the complement color.



89A8AA



B69CA5



96A797

Square

The Square scheme is like the rectangle color scheme, but the four colors are evenly spaced on the color wheel.



B69CA5



ADA18F



8DA9A0



96A4B6

Rectangle

The Rectangle color scheme consists of four colors that form a rectangle on the color wheel.



B69CA5



B79D95



8DA9A0



8BA8B0

Sweetspot

The Sweet Spot groups the original color and five complimentary colors.



B69CA5



EDE4E7



AD9CB6



787274



F7F7F7



787878

Same Dimension

The Same Dimension uses a secret algorithm to generate beautiful new colors.



B69CA5



EDC5D3



B6A09C



5C5356



9C0036



1C000A

Inverse Universe

The Inverse Universe completely reimagines the original color for something new.



B69CA5



EDC5D3



9CB2B6



5C5356



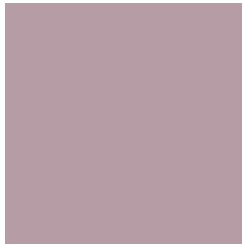
9C0036



1C000A

Previews

White Background



This preview shows how the Hex color B69CA5 looks on a white background.

Color Contrast Check

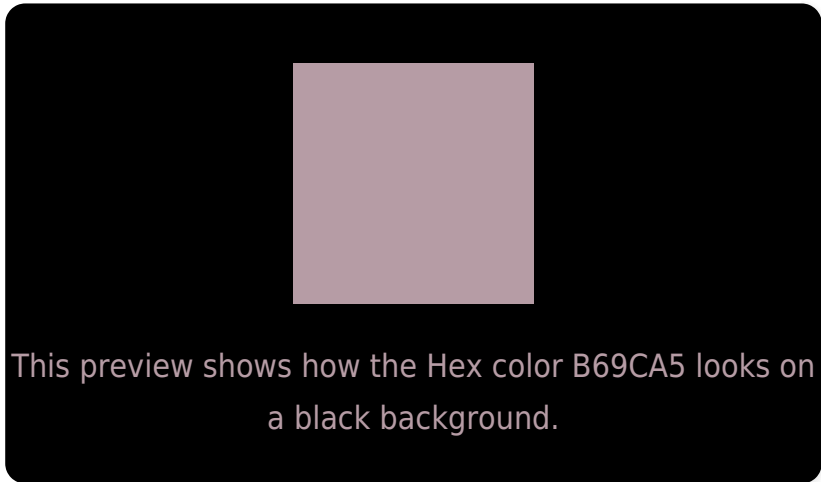
Large Text (above 18pt) WCAG AA × Fail

Any Text WCAG AA × Fail

Large Text (above 18pt) WCAG AAA × Fail

Any Text WCAG AAA × Fail

Black Background



Color Contrast Check

Large Text (above 18pt) WCAG AA ✓ Pass

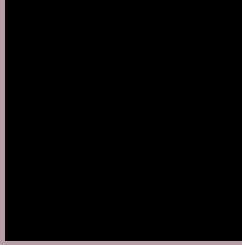
Any Text WCAG AA ✓ Pass

Large Text (above 18pt) WCAG AAA ✓ Pass

Any Text WCAG AAA ✓ Pass

If you want to check with other color combinations, try the [Color Contrast Checker](#).

Hex B69CA5 Background



This preview shows how black text looks on a background with the Hex color B69CA5.



This preview shows how white text looks on a background with the Hex color B69CA5.

Color Blindness Simulation

Color vision deficiency is a very complex topic, and I could not describe the different causes any better than Wikipedia does, so if you want to learn more, you should check out their [article about color blindness](#).

Dichromacy



Original Color
B69CA5

Protanopia
A4A2A8

Deuteranopia
B29EA5



Tritanopia
B69CA8

Trichromacy



Original Color
B69CA5

Protanomaly
ABA0A7

Deuteranomaly
B39DA5

Tritanomaly
B69CA7

Monochromacy



Original Color
B69CA5

Achromatopsia
A5A5A5

Achromatomaly
ABA2A5

CSS Examples

Text

The CSS property to change the color of the text to Hex B69CA5 is called "color". The color property can be set on classes, ids or directly on the HTML element.

This example shows how text in the color #B69CA5 looks like.

```
.text, #text, p{  
    color:#B69CA5  
}
```

If you want to add a text shadow in that color use the text-shadow property, you can generate a text shadow directly with our [CSS Text Shadow Generator](#).

Here you see how black text with a 4 pixel #B69CA5 colored shadow looks like.

```
.shadow{ text-shadow: 4px 4px 2px #B69CA5
}
```

Border

The CSS property to change the border of an element to Hex B69CA5 is called "border". The border property can be set on classes, ids or directly on the HTML element.

This example shows the color as border, it can be applied via the CSS property "border" or "border-color".

```
.border, #border, table{ border:4px solid
#B69CA5 }
```

If only the border color should be changed use the property `border-color`.

```
.border{ border-color:#B69CA5 }
```

If you want to add a box shadow in that color use:

Here you see how a box with a 4 pixel #B69CA5 colored shadow looks like.

```
.boxshadow{ -moz-box-shadow:4px 4px 4px  
4px #B69CA5; -webkit-box-shadow:4px 4px  
4px 4px #B69CA5; box-shadow:4px 4px 4px  
4px #B69CA5 }
```

Background

The CSS property to change the background color of an element to Hex B69CA5 is called "background". The background property can be set on classes, ids or directly on the HTML element.

```
.background, #background, body{  
background:#B69CA5 }
```

If only the background color should be changed can be used:

```
.background{ background-color:#B69CA5 }
```

This example shows the color as background, it is applied via the CSS property "background".

To optimize and compress your CSS code, you can use our [online CSS compressor and optimizer](#) based on csstidy. If you want to create a linear or radial gradient as background or border, check our [CSS Gradient Generator](#).

Hey! You found this booklet interesting? Support Converting Colors with the new Membership Option!

The pro membership hides all ads, plus gives you double the colors in the color bucket, and more awesome pro features!

[Learn more, Memberships starting at \\$2.50/m!](#)

**Follow me
on Twitter!**

@ConvertingColor